

OPERATING MANUAL

HEALTH AND SAFETY GUIDANCE NOTES MODEL:B6AC



DATE :2002/07/03
VERSION:1.8

1. Safety regulations	1-1
1.1 General safety rules	1-1
1.1.1 Operating safety precautions	1-1
1.1.2 Safety for tool use	1-2
1.1.3 Machine operator's precautions	1-2
1.1.4 Environmental safety	1-3
1.2 Danger areas of machine	1-4
2. Description of the machine	2-1
2.1 General description	2-1
2.2 Out looking, main units, and operator's position	2-1
2.2.1 Names of machine parts	2-1
2.2.2 Operator's position	2-2
2.2.3 Noise level	2-2
2.2.4 Spindle nose detail	2-2
2.3 Machine specifications	2-3
2.3.1 Specification	2-3
2.3.2 Tool holder detail drawing	2-4
2.3.2.1 BT 40	2-4
2.3.2.2 CAT 40	2-5
2.3.3 BT-40 Tooling system	2-6
2.3.4 Table of G commands	2-7
2.3.5 M-code list	2-10
2.3.6 Constraints on materials	2-11
2.3.7 Working space required	2-11
2.3.8 Requirements of operators and servicemen	2-12
2.3.9 Requirements of circumstance	2-12
2.4 Magazine system	2-12
3. Preparation for installation	3-1
3.1 Requirements of foundation	3-1
4. Transportation and installation	4-1
4.1 Shipping chest	4-1
4.2 Notices for transportation	4-1

4.3 Notices for open the shipping chest	4-2
4.4 Requirements of transportation equipment	4-2
4.4.1 Methods of transport	4-2
4.4.2 Cautions for unpacking	4-3
4.5 Notices for installation	4-3
4.5.1 Work environment	4-3
4.5.2 Power supply installation	4-3
4.5.3 Leveling adjustment	4-4
5. Preparation for trail runs	5-1
5.1 Cleaning	5-1
5.2 Visible inspection	5-1
5.3 Fluids	5-1
5.4 Pneumatic piping	5-1
5.5 Electrical earthling system	5-1
6. Operation and function instructions	6-1
6.1 Operation panel	6-1
6.2 Power ON/OFF	6-1
6.2.1 Starting up	6-1
6.2.2 Shutdown	6-1
6.3 Cycle start	6-2
6.4 Feed hold	6-2
6.5 Mode select	6-2
6.6 Feed rate adjustment switch	6-4
6.7 Spindle speed adjustment switch	6-5
6.8 Spindle stop and rotating direction	6-5
6.9 Manual spindle speed adjustment switch	6-5
6.10 Coolant supply	6-6
6.11 Emergency stop (E-STOP)	6-6
6.12 Rapid speed adjustment switch	6-7
6.13 Axis selection	6-7
6.14 Axis selection	6-7
6.15 Single block	6-8

6.16 Machine lock	6-8
6.17 Dry run	6-8
6.18 Option stop	6-9
6.19 Spindle orientation	6-9
6.20 Ot release	6-9
6.21 Tool turret rotate	6-10
6.22 F0	6-10
6.23 Reference position lamps	6-10
6.24 Auxiliary functions	6-11
7. Lubrication, Air pressure and coolant	7-1
7.1 Spindle	7-1
7.2 Lubrication tank and drawing	7-1
7.3 Pneumatic power system	7-2
7.4 Adjustment is air pressure	7-2
7.5 Coolant replacement	7-3
8. Adjustment	8-1
8.1 Adjustment of work table gibs	8-1
8.2 Adjustment of saddle gib	8-1
8.3 Adjustment of elevating gib	8-2
9. Service and maintenance	9-1
9.1 Belt maintenance	9-1
9.2 Air pressure system maintenance	9-1
9.3 Lubricant system maintenance	9-1
9.4 Cutting coolant system maintenance	9-1
9.5 Electricity maintenance	9-1
9.6 Maintenance measures for critical safety devices	9-2
9.7 Cleaning for chip	9-2
10. Self service and dismantling	10-1
10.1 Maintenance precaution	10-1
10.2 Safety confirmation	10-1
10.3 Requirements of replacement	10-1

10.4 Simply maintaining and dismantling each main parts unit	10-1
10.4.1 Spindle belt exchanging	10-1
10.4.2 Coolant pump exchanging	10-2
10.5 Inspection and maintenance period list	10-2
10.5.1 Inspection	10-2
10.5.2 Maintenance	10-2
11. Troubles and trouble shooting	11-1
11.1 X-axis, Y-axis and Z-axis	11-1
11.2 Coolant system	11-1
11.3 Lubricant system	11-1
11.4 Electricity	11-1
12.Parts list	12-1
12.1 Spindle assembly	12-1
12.1.1 Spindle assembly drawing	12-1
12.1.2 Spindle assembly parts list	12-2
12.2 Elevating assembly	12-3
12.2.1 Elevating assembly drawing	12-3
12.2.2 Elevating assembly parts list	12-4
12.3 Table, saddle assembly	12-5
12.3.1 Table, saddle assembly drawing	12-5
12.3.2 Table, saddle assembly parts list	12-6
12.4 X, Y axis assembly	12-7
12.4.1 X, Y axis assembly drawing	12-7
12.4.2 X, Y axis assembly parts list	12-8
12.5 Z axis assembly	12-9
12.5.1 Z axis assembly drawing	12-9
12.5.2 Z axis assembly parts list	12-10
12.6 Lubrication, coolant assembly	12-11
12.6.1 Lubrication, coolant assembly drawing	12-11
12.6.2 Lubrication, coolant assembly parts list	12-12

1. Safety Regulations

Read this manual thoroughly before using the machine.

1.1 General safety rules

1.1.1 Operating safety precautions

- * The operator must be a technician who is trained in the operation and familiar with the manual.
- * Do study the safety information and practice safety first.
- * The operator should wear safety clothes, such as a helmet safety glass working clothes, safety shoes etc, which must conform to local industrial safety regulations.
- * Eye protection-eye protection facilities must be considered as optional instruments and shall be carefully selected, fitted and used. Compulsory wearing of spectacles with impact resistant lenses shall be a safety policy.
- * Before you start a machine, be sure you know what is going happen.
- * Be sure you know how to stop the machine before you start it.
- * Be alert for any bystanders or unauthorized person who may be in the area of the machine travel limits areas.

An area is not a hazard to the operator that his control station may be hazardous to an assistant or by standers.

- * The operator and person (s) performing maintenance must be mutually aware of each other's presence in the machine area.
- * Do not attempt to perform any cleaning, chip removal or workplace clamping while units are in motion.
- * Do not attempt to measure moving workplaces in the machine, always stop spindle and machine motion when measuring.
- * Do not wear gloves and any hand covering while operating machine.
The operators need wear gloves and safety shoes while loading and unloading.
- * Long hair should be covered with a protective cover such as a hair net.
- * Never take depth of cuts beyond machine's capability.
- * Make sure power has been turned off when machine is unused for sometime.
- * Due to these potential dangers inherent in a machine tool, protective guards, safety design features and warning signs are utilized. For maximum personal safety it is imperative that all operators, maintenance personnel, observers, and all other that could be exposed to inherent machine hazards shall be made fully aware of potential dangers, and are thoroughly instructed in the safety precautions they must follow to avoid those dangers. It is essential that persons required to become involved with the machine are properly trained and have the required knowledge and skill to perform their respective functions.

- * If you are assigned as an assistant for any reason, both the assistant and the operator have the responsibility of deciding whom will be in command of the machine and its controls. Shall only one person controls the machine. Anyone else should stand clearly and be visible to the person who is assigned to operate the machine controls.

1.1.2 Safety for tool use

- * This manual is provided with machine. The user should have the manual available for the personnel working with this machine tool.
- * User must have available adequate lifting facilities capable of lifting within the safe load limits, also appropriate slings and hitches.
- * Do not use broken, chipped or defective tools.
- * Be aware of conditions that may be a fire hazard, such as volatile liquids and machining materials with low fire point.
- * Do not clean a machine with an air hose. Flying chips can cause personal injury or damage to machine.
- * Do not use cutters, wrenches, or other tools that do not fit properly.
- * Do not apply wrenches to moving work or parts.
- * Do not cutting Mg material.

Materials recommend being use for the machine as following:

1. Steel
2. Iron
3. Casting iron
4. Aluminum alloys
5. Copper alloys.

Note: Other materials should be selected carefully by operators.

- * The coolant fluid shall below flash point.

1.1.3 Machine operator's precautions

- * Guards and shields are to be in place at all times.
- * Be sure that all protective guards are in place before the machine is started.
- * During maintenance or lubrication, the machine should be taken out of service.
- * Do not attempt to use the machine beyond its designated capabilities.
- * Always supports the work piece as necessary using chucks, steadies and centers.
- * Never place hand on chuck or work piece to stop rotation of the spindle.
- * Make sure power has been turned off when machine is unused for sometime.

- * Never remove protection for even a short time when operating the machine.
- * Be sure the work piece is mounted securely in the table.
- * Do not attempt to adjust a tool while the machine is running.
- * Do not attempt to brake or slow down moving machine parts with your hands or makeshift devices.

1.1.4 Environmental safety

- * This machine is inadequate for explosive environment.
- * Keep the immediate area tidy. Avoid slippery floors, remove debris, and remove obstacles, remove chips, etc.
- * Remember that your work area may change during the day as material is delivered to and removed from your machine area. Be alert for pinch point and work hazard areas created by workplace storage.

1.2 Danger areas of machine

In general speaking, the specific risks of the machine come from the rotating cutting tool, which is mounted, on the spindle and the motor drives it. However, a table guard is provided and installed on the lower part of the head to reduce the risk.



The tool magazine
inside is a danger area.

The area inside the sheet
metal guard is a danger area. Fig. 1-1

2. Description of the machine

2.1 General description

- (1) This machine is designed with theoretical calculation to comply with the stress requirements especially for spindle rigidity, transmission belt strength, X, Y and Z Axes transmission stress, magazine & tool clamping stress, safety window glass stress coolant system, lubrication system, and etc.
- (2) Materials used for this machine had been considered for properly corrosion, wearing, and life time to avoid faults on machine.
- (3) The air system designed inciting pressure; component supports are in compliance with the design instructions.

2.2 Out looking, main units, and operator's position.

2.2.1 Names of machine parts

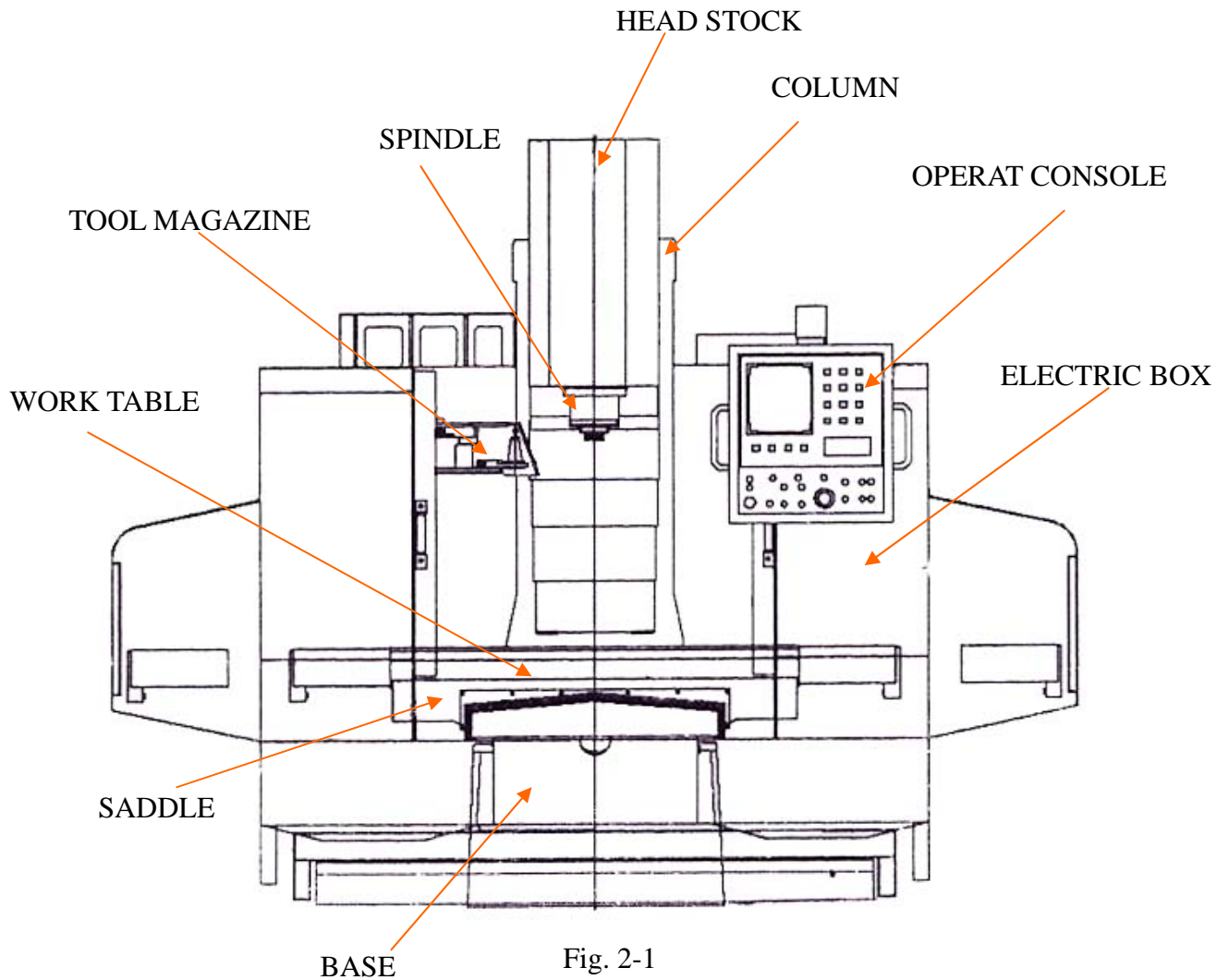


Fig. 2-1

2.2.2 Operator's position

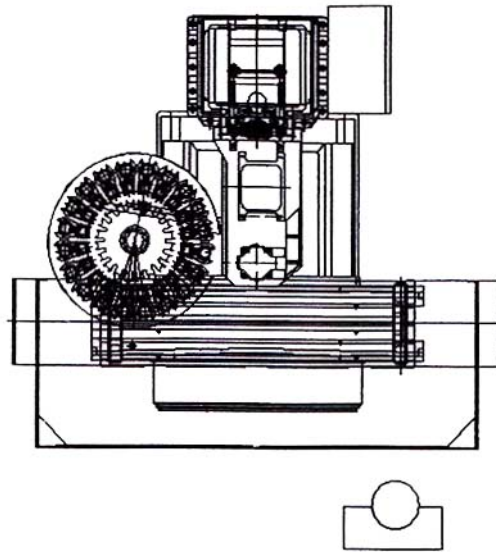


Fig. 2-2

2.2.3 Noise Level

- (1) The noise test is carried out in compliance with ISO 11202:1996.
- (2) No load
 - a. A-weighted sound pressure level at operator's
 $L_{A,eq} = 72 \text{ dB (A)}$
 - b. A-weighted sound power level
 $L_{w,eq} = 86.84 \text{ dB (A)}$
- (3) Load
 - a. A-weighted sound pressure level at operator's
 $L_{A,eq} = 78.5 \text{ dB (A)}$
 - b. A-weighted sound power level
 $L_{w,eq} = 91.18 \text{ dB (A)}$

2.2.4 Spindle nose detail

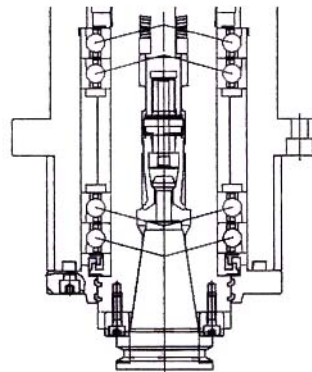


Fig. 2-3

2.3 Machine specifications

2.3.1 Specification

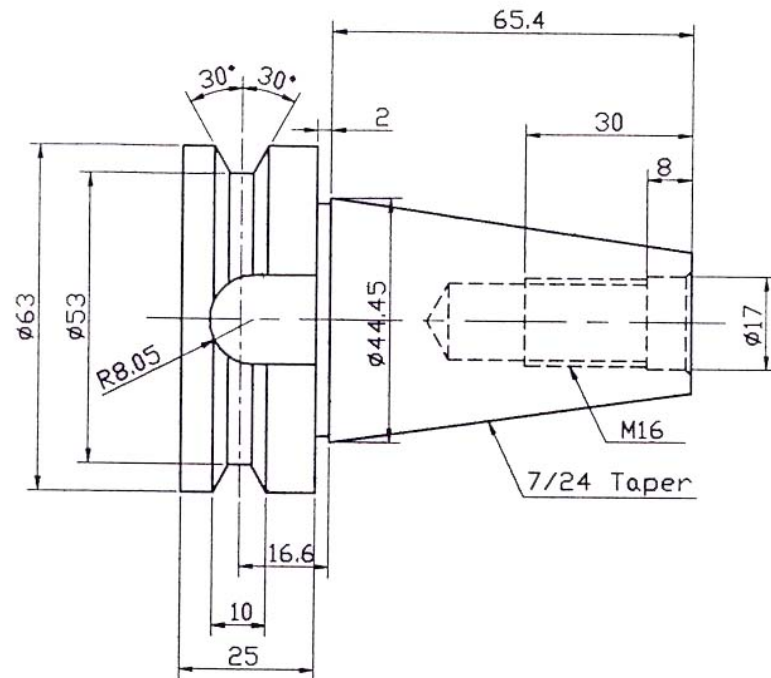
SPECIFICATIONS

Work table	405x1320mm (16x52")
Table T-slots (WxN)	16mm x5
Table load max	900kgs (2000lbs)
X axis travel	1020mm (40")
Y axis travel	560mm (22")
Z axis travel	610mm (24")
Spindle nose to table	110-720mm
Spindle center to column	600mm (23-5/8")
Spindle taper	CAT or BT #40
Spindle speed	60-6000 R.P.M.
Spindle motor	AC 10HP
3 Axes drive motor	DC or AC servo motor
Cutting feed	4M/min (1-160ipm)
Rapid feed	7-1/2M/min
ATC type	Armless Type
Max. tool diameter	ϕ 100mm (ϕ 3-15/16")
Max. tool length	275mm (10-15/16")
Max. tool weight	6.5kgs (14lbs)
Weight (Approx)	4500kgs
Floor space (LxWxH)	312x260x250cm
Packed size (LxWxH)	230x225x230cm
Positioning accuracy	\pm 0.01mm (\pm 0.0004")
Repeatability accuracy	\pm 0.005mm (\pm 0.0002")

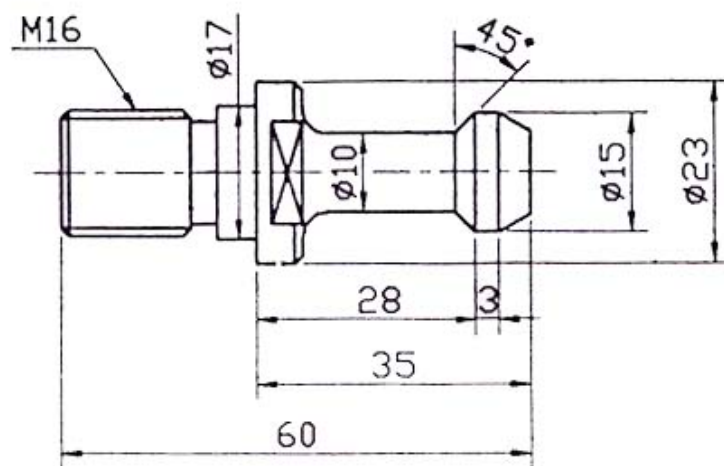
2.3.2 Tool holder detail drawing

2.3.2.2 BT 40

(1) Shank

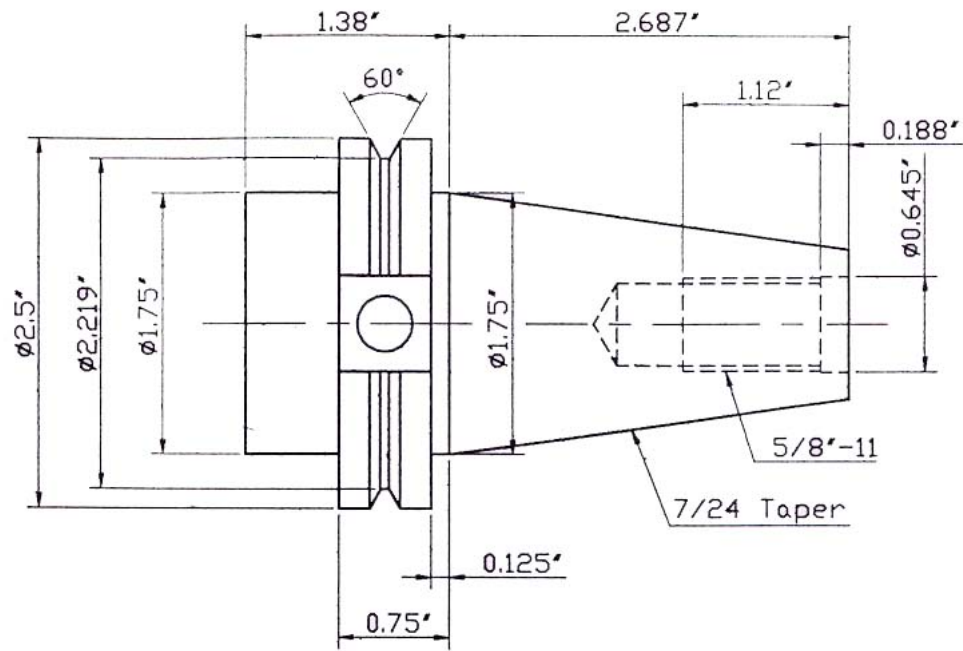


(2) Pull stud

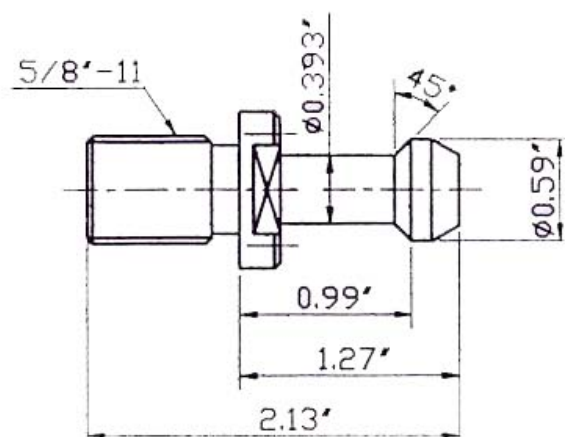


2.3.2.2 CAT 40

(1) Shank

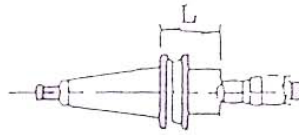


(2) Pull stud

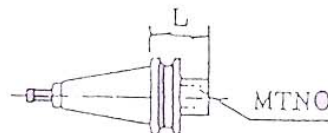


2.3.3 BT-40 Tooling system

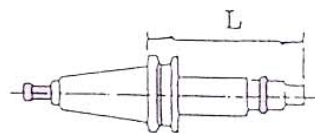
Face mill arbor



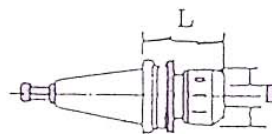
Morse taper sleeve



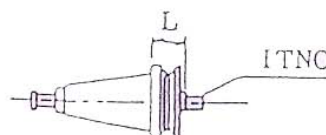
Auto taper



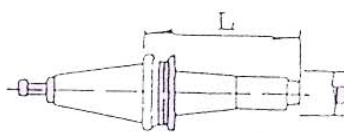
Milling chuck



Jacobs taper adaptor



Boring bar
(Square tool type)



Boring bar
(Cartridge type)

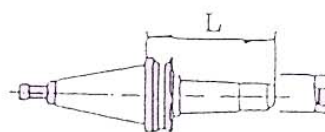























Fig. 2-5


2.3.4 Table of G commands


G code system		Group	Function
2	3		
 G00	 G00	01	Positioning
 G01	 G01	01	Linear interpolation
G02	G02	01	Circular interpolation (clockwise)
G03	G03	01	Circular interpolation (counterclockwise)
G04	G04	00	Dwell
G09	G09	00	Exact stop
G10	G10	00	Program parameter input
G11	G11	00	Program parameter input mode cancel
 G14	 G14	18	*Balance cut OFF
G15	G15	18	*Balance cut ON
 G17	 G17	02	Plane selection Xp-Yy
 G18	 G18	02	Plane selection Zp-Xy
 G19	 G19	02	Plane selection Yp-Zy
 G20	 G20	06	Inch command
 G21	 G21	06	Metric command
G22	G22	04	Barrier check ON
 G23	 G23	04	Barrier check OFF
G27	G27	00	Reference point return check
G28	G28	00	Reference point return
G29	G29	00	Return from reference point
G30	G30	00	2 nd reference point return
G30.1	G30.1	00	Tool position return 1
G30.2	G30.2	00	Tool position return 2
G30.3	G30.3	00	Tool position return 3
G30.4	G30.4	00	Tool position return 4
G30.5	G30.5	00	Tool position return 5
G31	G31	00	Skip function
G31.1	G31.1	00	Multistage skip function 1
G31.2	G31.2	00	Multistage skip function 2
G31.3	G31.3	00	Multistage skip function 3
G32	G33	01	Thread cutting
G34	G34	01	Variable lead thread cutting
G37	G37	00	Automatic tool length measurement
 G40	 G40	07	Tool nose R compensation cancel
G41	G41	07	Tool nose R compensation left
G42	G42	07	Tool nose R compensation right
G46	G46	07	Tool nose R compensation (automatic selection of direction) ON
G50	G92	00	Coordinate system setting/spindle clamp speed setting
G52	G52	00	Local coordinate system setting

G code system		Group	Function
2	3		
G53	G53	00	Machine coordinate system selection
■ G54	■ G54	12	Work coordinate system 1 selection
G55	G55	12	Work coordinate system 2 selection
G56	G56	12	Work coordinate system 3 selection
G57	G57	12	Work coordinate system 4 selection
G58	G58	12	Work coordinate system 5 selection
G59	G59	12	Work coordinate system 6 selection
G61	G61	13	Exact stop check mode
G62	G62	13	Automatic corner override
G63	G63	13	Tapping mode
■ G64	■ G64	13	Cutting mode
G65	G65	00	Macro call
G66	G66	14	Marco modal call A
G66.1	G66.1	14	Marco modal call cancel
■ G67	■ G67	14	Marco modal call cancel
G70	G70	09	Finishing cycle
G71	G71	09	Straight turning cycle
G72	G72	09	Face rough machining cycle
G73	G73	09	Stock removal in rough machining cycle
G74	G74	09	Face cut-off cycle
G75	G75	09	Straight turning cycle
G76	G76	09	Multiple repetitive thread cutting cycle
■ G80	■ G80	09	Hole machining cycle cancel
G83	G83	09	Deep hole drilling cycle 1 (Z axis)
G79	G83.2	09	Deep hole drilling cycle 2
G84	G84	09	Tapping cycle (Z axis)
G85	G85	09	Boring cycle (Z axis)
G87	G87	09	Deep hole drilling cycle (X axis)
G88	G88	09	Tapping cycle (X axis)
G89	G89	09	Boring cycle (X axis)
G90	G77	09	Straight turning canned cycle
G92	G78	09	Thread cutting canned cycle
G94	G79	09	Face turning canned cycle
■ G96	■ G96	17	Constant peripheral speed control
■ G97	■ G97	17	Constant peripheral speed control cancel
■ G98	■ G94	05	Asynchronous feed
■ G99	■ G95	05	Synchronous feed
-	■ G90	03	Absolute value command
-	■ G91	03	Incremental value command

-	 G98	10	Hole machining cycle initial return
-	G99	10	Hole machining cycle reference point return

2-8

Note 1: The “” mark denotes a G code which is selected within each group when the power is switched on or when resetting that initializes the modal commands is executed.

Note 2: The “” mark denotes a G code for which a parameter can be selected as the initial status when the power is switched on or when resetting that initializes the modal commands is executed. Note that the inch/metric conversion is selectable only when the power is switched on.

Note 3: An asterisk (*) indicates a function which is provided to a multi-system only.

2.3.5 M-code list

M-code	Functions	Note
M00	Program stop	CNC
M01	Option stop	CNC
M02	Program end	CNC
M03	Spindle forward	
M04	Spindle reverse	
M05	Spindle stop	
M06 Txx	Auto tool change	
M08	Coolant ON	
M09	Coolant OFF / oil mist OFF	
M10	4th axis clamp	
M11	4th axis unclamp	
M19	Spindle orientation ON	
M30	Program end	CNC
M40	Tool magazine go out	
M41	Tool magazine go back	
M95		
M98	Call subprogram	CNC
M99	End subprogram	CNC

2.3.6 Constraints on materials

Any material will generate dust or other substances harmful to health and pollute the environment shall be forbidden.

2.3.7 Working space required

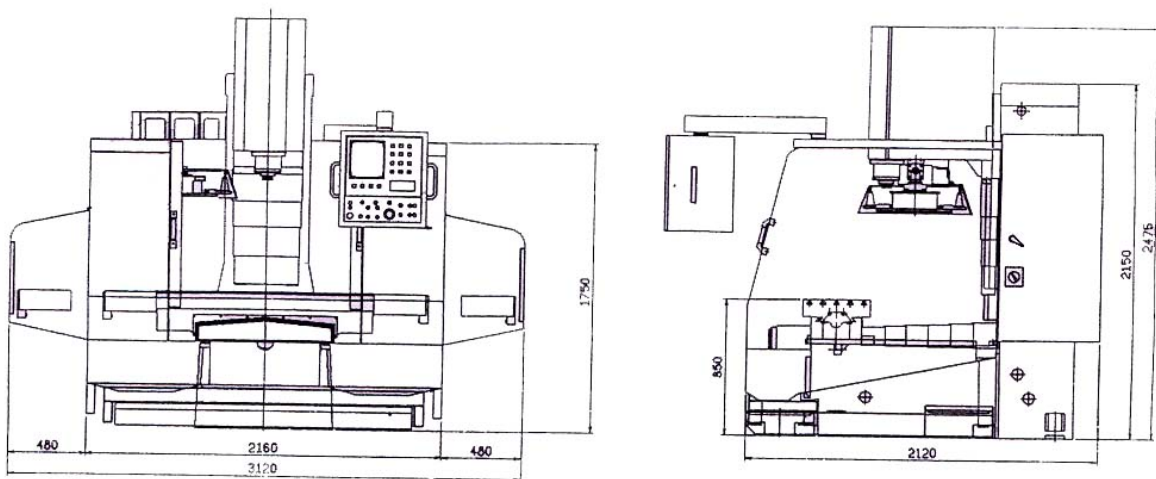


Fig. 2-6

2.3.8 Requirements of operators and servicemen

It is so designed that only a skilled technician is allowed to operate this machine, otherwise he must be trained until knowing how to operate correctly and safely. Qualified technicians shall carry out the electrical maintenance works only.

2.3.9 Requirements of circumstance

It is so designed that this machine cannot be used in the potential explosive environment. Generally, this machine will be installed on the following conditions:

- (1) Ambient temperature: 5-40°
- (2) Atmosphere: Free from excessive dust, acid fume, corrosive gases and salt.
- (3) Avoid exposing to abnormal vibration.
- (4) Avoid exposing to direct sunlight or heat rays, which can change environmental temperature.
- (5) Have to connect to earth.
- (6) Relative humidity: 30~95% (without condensation)
- (7) Source frequency: nominal frequency $\pm 1\%$
- (8) Supply voltage: nominal supply voltage $\pm 10\%$

2.4 Magazine system

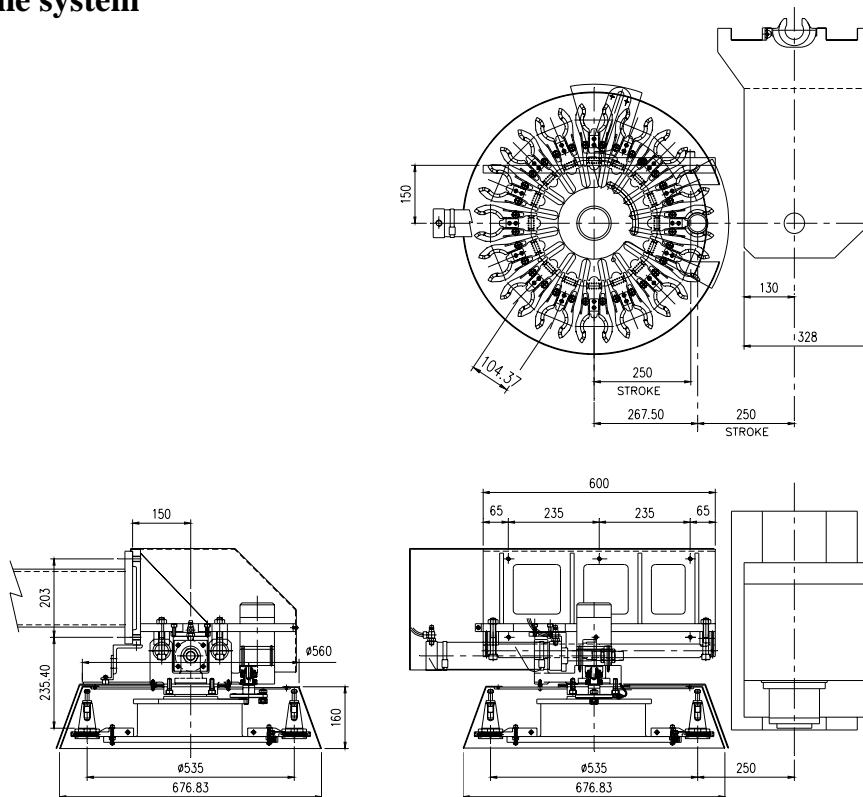
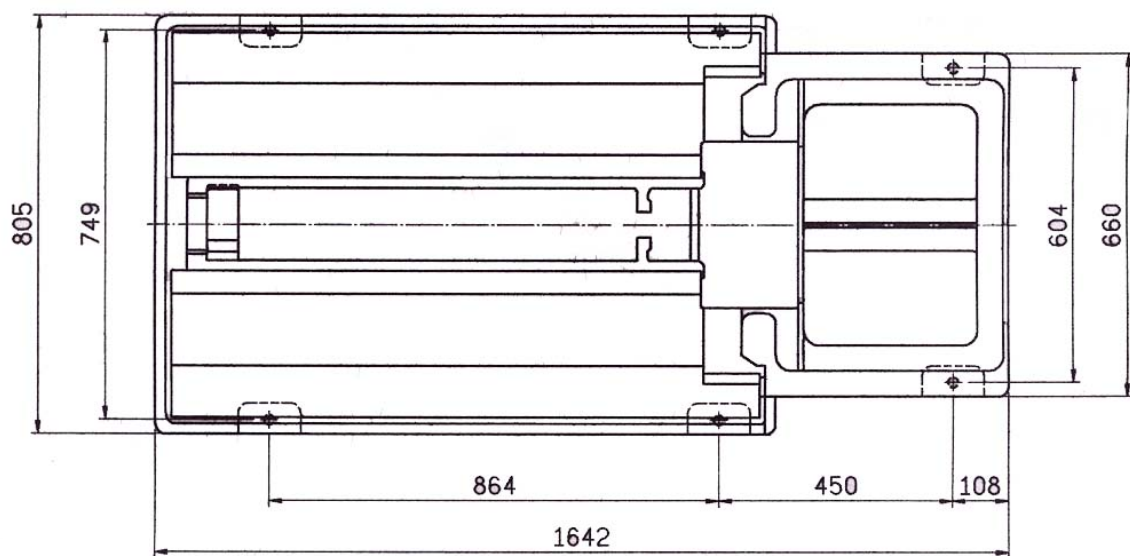


Fig. 2-7

3. Preparation for installation

3.1 Requirements of foundation

With the common usage of tungsten carbide cutting tools nowadays, heavy cutting and quicker spindle speed are therefore reinforced. This may cause the vibration easily. In order to ascertain the best cutting condition, it is necessary to build a sound & good floor basis. (please refer to following figure)



4. Transportation and installation

4.1 Shipping chest

This chest is used to pack the machine for shipment.

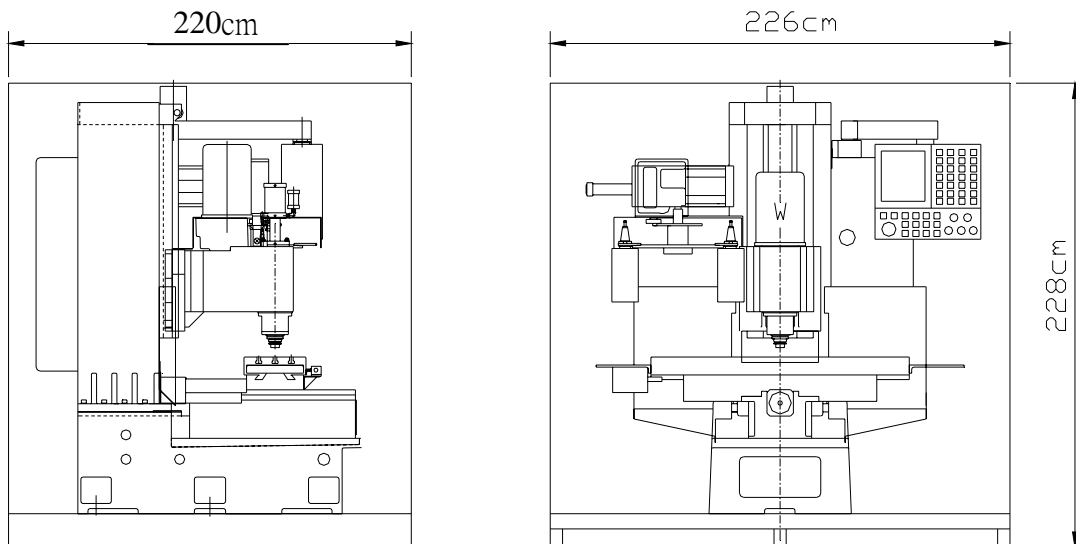


Fig. 4-1

4.2 Notices for transportation

- (1) The machine will be moved and bumped caused by braking, turning corner and shaking when the truck moves on the road. Therefore, the machine should be tightening in secure and balanced condition before transporting.
- (2) This machine is a package unit, all the parts should be fixed firmly to link up with the machine before shifting.
- (3) Make sure that the machine is completely fasten with the bottom rack of the chest or carrying rack by means of bolts.
- (4) To avoid coolant and oil leakage and the machine rusting because of moisture during transporting, they shall be drained out completely prior to shifting. However required amounts of them shall be refilled before starting up.
- (5) For the interests of machine safety and personal safety, the hoist driver shall be qualified with a certificate.
- (6) Sunshine and raindrop shall be avoided during transporting.

4.3 Notices for open the shipping chest

- (1) The chest shall be opened by professional personnel with specific tools.
- (2) The top cover shall be dismantled first and second t the side walls.
- (3) Don't open the chest in case of the workers with bad mood.
- (4) After it is uncovered, people who are not professional technician for trial run and service shall be prohibited to wire the power, trial run the machine, dismantle or any else relevant.
- (5) Please refer to the local regulation of environment protection to treat the scraps after the chest was broken.

4.4 Requirement of transportation equipment

4.4.1 Methods of transport

- (1) Machine net weight: approx. 4500 kg.
- (2) Prior to unpacking, transport may be using a forklift.
- (3) After packing, transport may be made by hoisting with a reinforced cable.
 - a. Use the forklift of fork to lift an about 10Cm high. Then put the riser at the bottom.
 - b. Drive the fork to the side of machine and insert the forklift slowly into the space of the bottom. After the base is put on the forklift completely, lift the machine slowly.

NOTE: Must not lift the machine at the side of machine directly, which will overturn the machine.

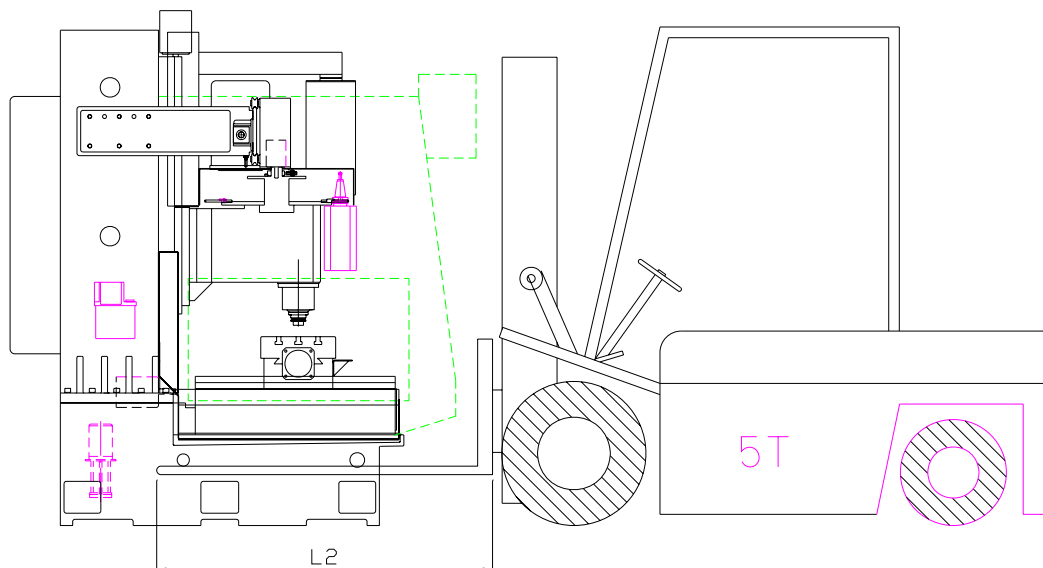


Fig. 4-2

Remarks:

- (1) Always ensures capacity of equipment is adequate before attempting to lift.
- (2) When the machine is being hoisted, keep the personnel after.
- (3) To hoist the unpacked case by reinforced cable, the motion shall that observe strictly the instruction appeared on the side of the wooden case.
- (4) Keep the worktable and saddle in the proper positions so as to keep the machine balance.
- (5) Do not hoist the machine too high. The best position is to keep the machine base approximately 10cm from the ground.
- (6) Only an authorized forklift or crane operator is allowed to transport the machine.

4.4.2 Cautions for unpacking

- (1) To transport the machine, it is necessary to support the machine with the rated case or pallet to avoid moisture. In case of damage by moistening, please contact our agent or the transported.
- (2) After unpacking, check and see if all tools and accessories are intact, otherwise, please contact our agent.
- (3) After unpacking, do not move the sliding surfaces and worktable as long as the rustproof oil on them are cleaned off and followed with the lubrication.
- (4) Before the cleaning starts, the sliding protective pieces must be dismantled, and all sliding surface setting levers, loosened. When the rustproof oil is removed, proper amount of lubricant should be injected onto various sliding surfaces. Then move the sliding surfaces for final cleansing and lubrication.
- (5) Do not remove the oil brushes in the process of cleaning.
- (6) Do not use gasoline or any other inflammable oil cleaner.

4.5 Notices for installation

B6AC is a precession CNC milling machine, any work related to this machine shall only be by service engineers or qualified technicians. This manual shall be prior to use it.

4.5.1 Work environment

This machine is inadequate for any explosive environment.

4.5.2 Power supply installation

Using a phase-sequence detector to check the correctness of phase sequence (L1, L2, and L3).

4.5.3 Leveling adjustment

- (1) To keep the accuracy and to maintain the good condition of lifetime of this machine, leveling adjustment is one of the important factors. To show the excellent precision and quality of this machine, please carry out leveling accordingly after installation.
- (2) First, a flat ground being able to burden the weight of machine shall be prepared. After positioning the machine on the prepared foundation, then install the machine according to the instruction manual. Roughly leveling the machine by adjusting the leveling bolts at the bottom of machine base. Moving worktable to the X and Y axis middle position place an accurate level 150mm length with a minimum scale of 0.02mm/M (0.0008"/40") on the worktable. Then turning the leveling bolts to make the deviation within 0.02mm/M (0.0008"/40").
- (3) If vibration occurs due to ill horizontality or cutting scared defective condition occurs, leveling shall be re-tuning again.
- (4) Within 2 or 3 days after installing completed, the horizontal should be re-checked before operating. Under normal working condition, the horizontal shall be examined in a period of half year initially and then quarterly in the subsequent years.

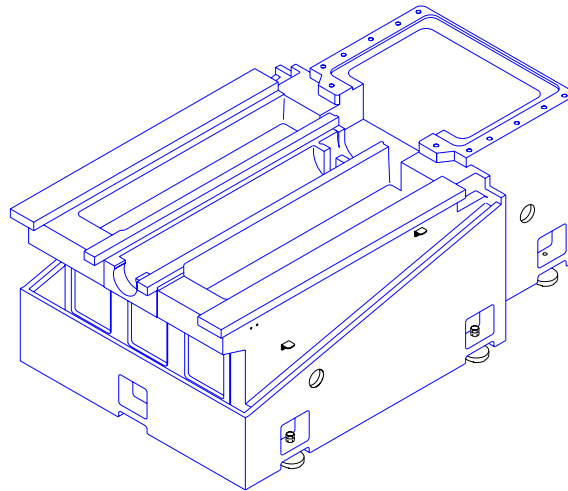


Fig. 4-3

5. Preparation for trial runs

5.1 Cleaning

All machine surfaces are covered with rust preservative, which must be thoroughly cleaned before moving any parts of the machine. Only mild solvent and soft rags must be used for cleaning.

NOTE: Never use lacquer, thinner, gasoline or other inflammable as a cleaning fluid.

5.2 Visible inspection

At first, removing any stopper used to prevent the machine from movement in transportation (e.g. the doorplates). Check if the machine is rusted and damaged as well as shape transformed, broken, etc. Any fault shall be removed prior to trial run.

5.3 Fluids

Lubricant and coolant shall be filled to designated quantities first. Referring to section 7.5 to perform maintenance to maintain the machine for operating in good condition.

5.4 Pneumatic piping

The pneumatic power system, all have to do is to pay attention toward the cleanness of air source and then connect it to the machine.

Any unclean pneumatic piping will be a key point to damage the filter-regulator lubricator unit and the pneumatic system leading therefore to deteriorate producing efficiency.

5.5 Electrical earthing system

Make sure that a stable power voltage as well as the frequency for NC unit wires the machine. The machine should be earthen properly to protect the NC unit from any electric shock.

A: Connecting terminal.

L1,L2,L3: Power cables above 5.5 mm²

PE: Protective earthing cable above 5.5 mm²

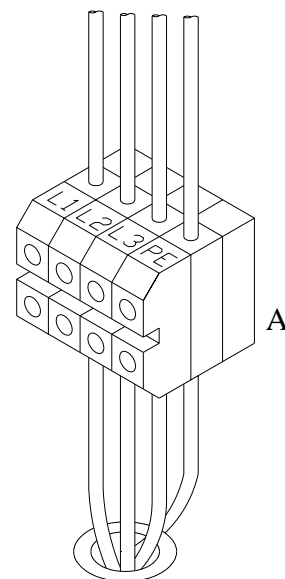


Fig. 5-1

7. Lubrication, Air pressure and coolant

7.1 Spindle

Bearings in the spindle are forced lubricated the assembling by grease (KLEUBER ISO FLEX-NBU 15).

This high-speed grease is low-temperature and long-term grease, especially for High-speed rolling bearings or high load.

When the machine does not be operated for a long time (morn than 6 days) ,you Should perform the spindle at low speed about one hour before the operation.

7.2 Lubrication tank and drawing

Lubrication tank supplies the lubricant for X , Y and Z-axis ball screws .You must refill oil when the oil surfaces below the low line.

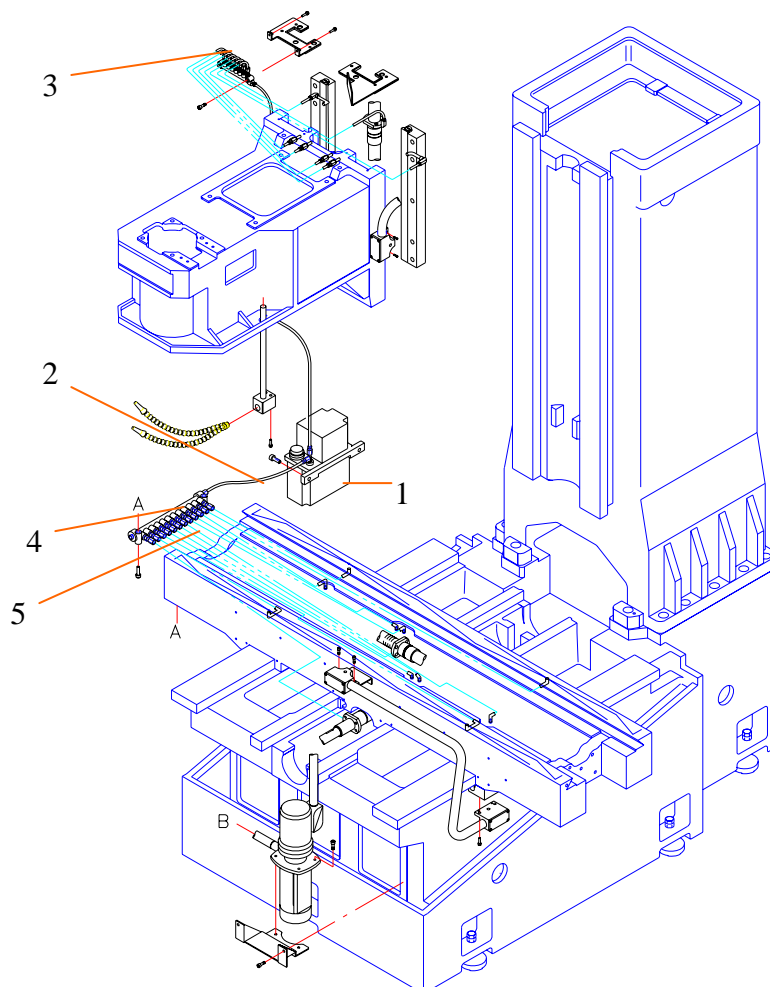


Fig 7-1

NO	Description	Qty	Specification
1	Lube box	1	CESD-TYPE
2	Lubrication string	2	$\varphi 10$ mm
3	Oil distribute	1	
4	Oil distribute	1	A-12
5	Lubrication tubing		$\varphi 4$ mm

7.3 Pneumatic power system

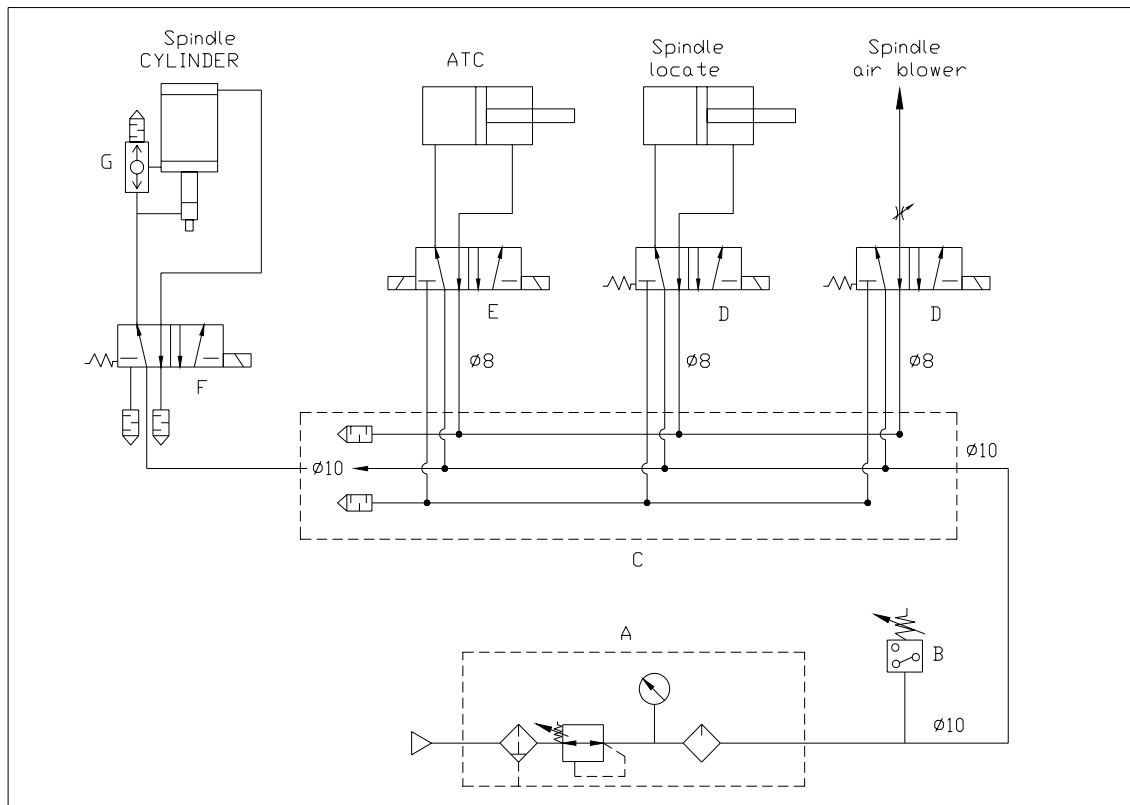


Figure 7.2 Scheme of pneumatic

A	050FRL	Air Service Equipment	1
B	KP1	Pressure control	1
C	BN-260-3TN	End subbase	1
D	BN-2600-4E1/110V	Solenoid valve	2
E	BN-2600-4E2/110V	Solenoid valve	1
F	BN-3000-4E1/110V	Solenoid valve	1
G	OV-03	Pressure discharge	1
H	PSL-02	Silencer valve	4
I	AWG-03	Pressure control switch	1

7.4 Adjustment is air pressure

The air pressure is adjusted normally at 5-7 kgf/cm².

7.5 Coolant replacement

The sump locates in base of the machine. The volume of the sump is 160 liters.

1. Turn off the power source.
2. The dirty coolant is drained through the drain plug on the back of the machine base.
3. Supply fresh coolant through the filter into the sump.

Table of coolant usage

Material	Recommendation	PERIOD
Ferrous materials	ARAL SAROL 345	4 month
Cast iron	ARAL MULTROL 820	
Else materials	Any suitable coolant. Do not use low flash point Coolant. Adequate coolant with little or no harm to health.	

Notice:

The old coolant handling should comply with the local usage.

8. Adjustment

As a result of long-term operation between the sliding surface and gibs will create a clearance. Therefore the gibs must be adjusted to upkeep the precision of sliding surfaces.

8.1 Adjustment of work table gibs

The gibs are attached onto between the saddle seat and worktable dovetail.

- (1) Clean the slide way and add the lubricant.
- (2) Use a screwdriver and spanner adjusts the gib screw and nut (M) on both sides of saddle seal.
- (3) Replace the excessive worn-out gib whenever necessary.

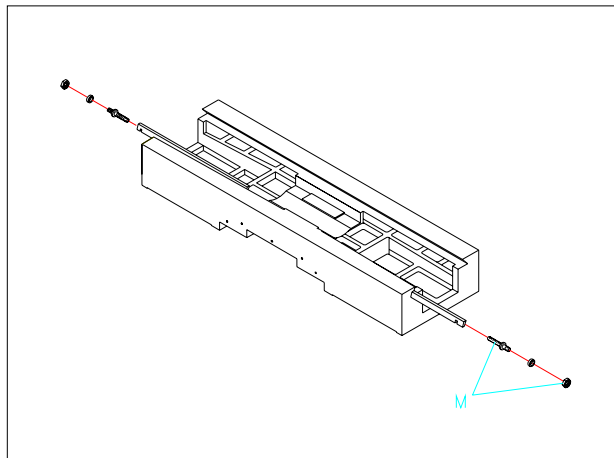


Fig. 8-1

8.2 Adjustment of saddle gib

- (1) Move the saddle to the front of base.
- (2) Clean the slide way and add the lubricant.
- (3) Use screwdriver to adjust the gib screw (D) of the saddle.
- (4) Employ the same methods to adjust the work table gib.

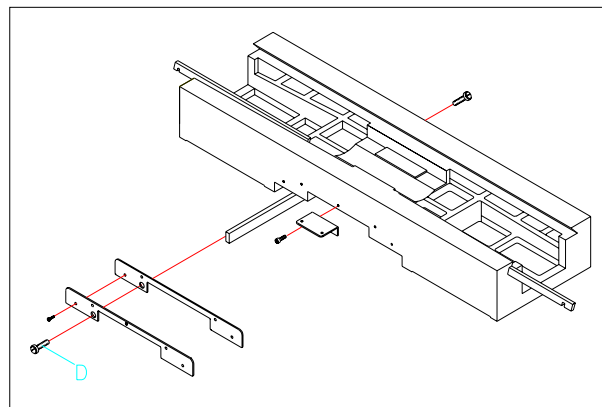


Fig. 8-2

8.3 Adjustment of elevating gib

The elevating gib is attached to the precision of elevating and column dovetail. The adjustment can be performed as follows:

- (1) Clean the slide way and add the lubricant.
- (2) Use a screwdriver to adjust the gib screw (R) of the elevating.
- (3) Employ the sane methods to adjust the word table gib.

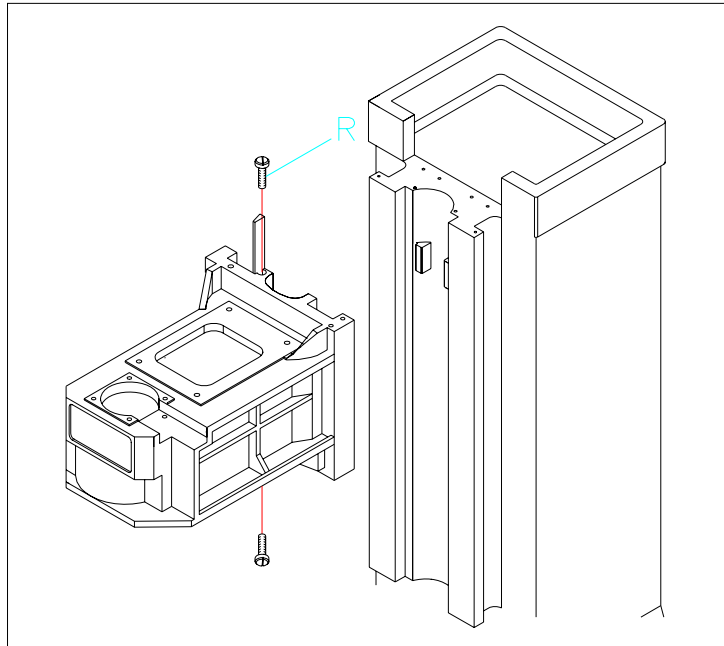


Fig. 8-3

9. Service and maintenance

9.1 Belt maintenance

- (1) When the abnormal belt is discovered; please exchange or adjust the belt immediately. Because of tightness, looseness, transforming and friction ill make noise and have an effect on belts lifetime.
- (2) Belt transmission should be examined the status of transmitting, noise and efficiency etc. to prevent abnormal status occurred.
- (3) In case of exchange, the sharp tools are avoided to use the belt may be damaged to influence transmitting efficiency and lift time of belt.
- (4) In case of machine stops operating more than 6 months, the belt should be loosened to prevent fatigue from long-time tension.

9.2 Air pressure system maintenance

- (1) The pressure of compressed air source is ordinary 5-7 kg/cm².
- (2) Make sure to install the filter-regulator-lubricator module. (The filter should be cleaned up and lubricant added in the fixing period) In order to keep the pneumatic parts work smoothly and life lasting longer.

9.3 Lubricant system maintenance

Eyes examine the pipe loop way at particular period (especially over one year). In order to prevent pipe loop fallen leaked, broken, stress fold. Blocked all lubricant parts should be lubricated sufficiently.

9.4 Cutting coolant system maintenance

- (1) The purpose to use coolant is to reduce thermal transformation while processing, also, the normal accuracy of workplace can be kept and the tool lift time increased. So that the coolant can be selected properly depending on the sort of materials of workplace.
- (2) Dependence on the degree of pollution, the coolant should be changed regularly and avoids physical damage of worker and influence the accurate precise of workplace. According to the tankard of environmental protection.
- (3) The polluted coolant should be treated by treatment system, before drained off. Be cautioned the polluted coolant is treated incorrect method when drained out. The human health and environment will be damaged.

9.5 Electricity maintenance

- (1) All wiring shall be examined damage by eyes at particular period.
- (2) Prevention outside substances more into the control case and operation case due to human omission. This will cause short-circuiting.

- (3) Check and confirm all L.S. signals at particular period.
- (4) Clean up ventilator filter and check all vent hold of electrical control box at particular period.
- (5) The rotating of main motor's cooling fan shall be confirmed.

9.6 Maintenance measures for critical safety devices

The critical safety devices are particularly relating to safety.

In order to give those device healthy operation conditions, it is necessary to perform maintenance procedure as per the following table.

Device	Description of Maintenance
E-Stop	Pushing the Emergency stop button after daily starting up according to Operator's Manual. A "NOT READY" message displayed on screen means E-stop is healthy; otherwise, it is faulty and shall have a service by qualified technician.
Main Power Switch	Checking the tightness of holder every half year, if it is loose it must be tightened. If the fixing screw between the holder and link wears, replacement shall be changed according to the specification on the electrical parts list.
Lubricant Tank	Lubricant must be filled if lubricant shortage message displayed on CRT.

9.7 Cleaning for chip

- (1) At first, open the door then turn off main power supply.
- (2) The operator should wear safety shoes, helmet; safety glove, safety glassed and clothes.
- (3) Use besom, hairbrush and dustpan clean chip.

10. Self service and dismantling

10.1 Main tenance precaution

When unit parts of this machine is fixed, the specific tool equipment are required.
And only the experienced professional technician is allowed to repair machine.

In case unit parts out of order, as electricity controller, ball screw linear way, and so on.
The unit parts can not be dismantled and fixed arbitrarily by you. You may contact our agencies if service needed.

10.2 Safety confirmation

Turn the main power off and set up warning signs at each side surrounding the achiever with 3 meters; if the machine is disassembled and fixed.

10.3 Requirements of replacement

For safety and keeping accurate quality and sort of unit parts should be used as the same as the original designed specification and manufacture brand, while exchanging or fixing needed.

10.4 Simply maintaining and dismantling each main parts unit

10.4.1 Spindle belt exchanging

- (1) Turn off the power source.
- (2) Dismantle the four nuts (A) and take off the (B)
- (3) Dismantle the four hexagonal socket head screws (C) and lift the motor (D).
- (4) When the speed change belt is replace accordingly (E), restore the machine by reversing the orders.

Note: The replaced belt shall conform to that of company specifications.

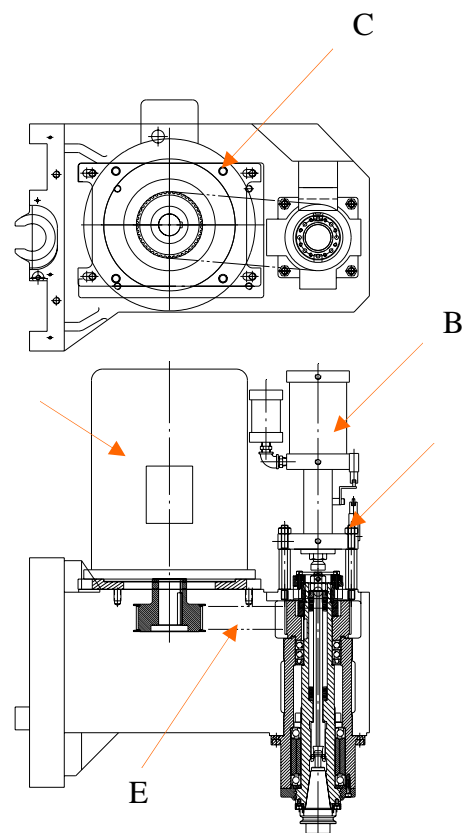


Fig. 10-1

10.4.2 Coolant pump exchange

At first, remove wire and loosen the fixing bolts of coolant pump. Then take the unit off to exchange. Test for rotating confirmation action before operating.

10.5 Inspection and maintenance period list

10.5.1 Inspection

No	Item	Inspection detail	Period
1	Voice	In operation, checked to see if the machine were abnormal voice.	Daily
2	Vibration	In operation, checked to see if the machine were abnormal voice.	Daily
3	Temperature	After operating, checked to see if the head stock temperature were too high.	Daily
4	Motor	Checked to see if the spindle motor were run correct.	Daily
5	Lubrication	Checked to see if the lubrication oil were correct.	Weekly
6	Cleaning	Checked to see if the machine were cleaning.	Weekly
7	Button	Checked to see if the push button were acumen.	Monthly

10.5.2 Maintenance

No	Maintenance detail	Period
1	In case of machine stops operating the belt should loosened to prevent fatigue from long-time tension.	6 months
2	The pipe loop way be examined by eyes at particular period.	Especially over one year
3	Dependence on the degree of pollution, the coolant should be changed.	4 months
4	All wiring shall be examined damage by eyes at particular period.	1 month

11. Troubles and trouble shooting

11.1 X axis, Y axis and Z axis

- (1) Problem: The longer of processing, the shorter of the finished dimension.

Remedy: Please examines the precision screw nut and motor bolt, whether they are loose.

- (2) Problem: The dimension drift is too sensitive to temperature.

Remedy: the precision bearings are over pre-loaded, please adjust.

- (3) Problem: Zero return fails.

Remedy: Check the dog and proximity sensor.

- (4) Problem: Abnormal noise and vibration occurred in motion.

Remedy: Check the bearings, ball screw, and linear ways.

- (5) Problem: Doesn't work.

Remedy: Check the PCB and wiring.

11.2 Coolant system

- (1) Problem: Coolant ejected out over volume.

Remedy: Check the piping and the pollution degree of coolant and the pump suction inlet.

- (2) Problem: The coolant drains back if not in use.

Remedy: check the checking valve.

11.3 Lubricant system

- (1) Problem: Lubricated mechanical parts out of lubricant.

Remedy: Check the lubricator and piping.

- (2) Problem: Improper oil supply

Remedy: Check the lubricator and the specification of lubricant.

11.4 Electricity

- (1) Problem: Abnormal secondary power.

Remedy: Check the wiring if there is short-circuit or disconnection.

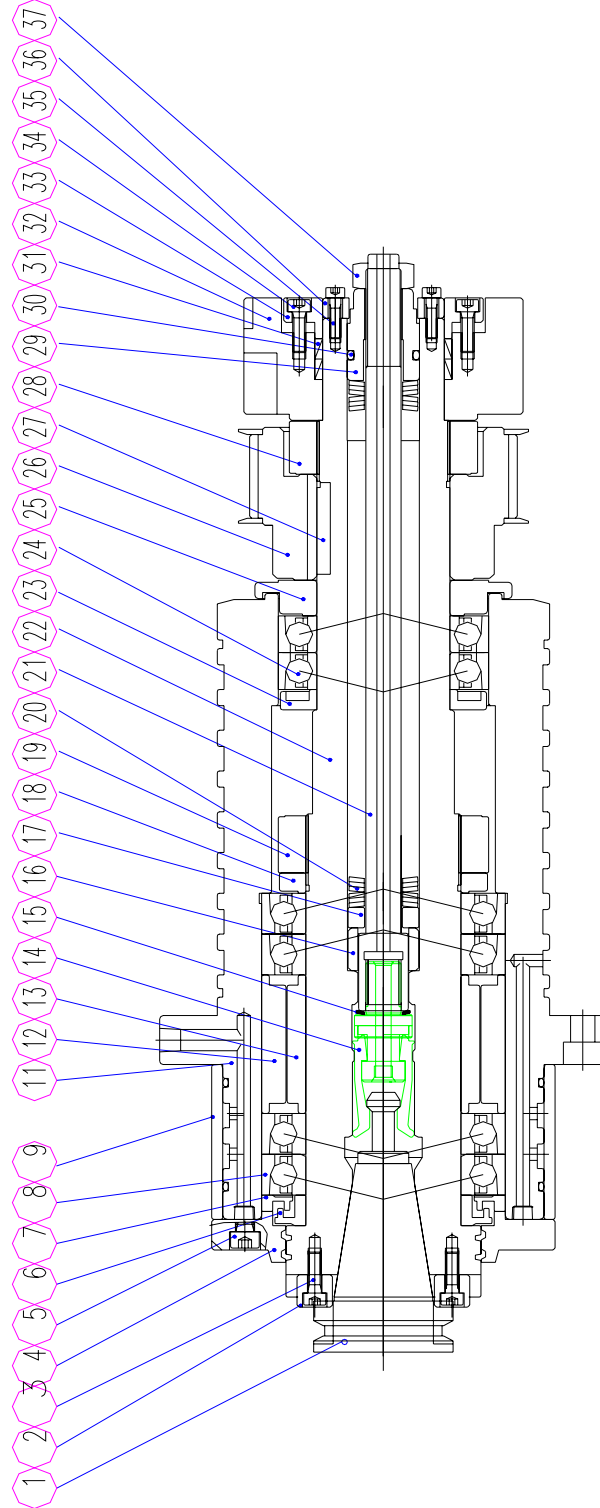
- (2) Problem: The program processing halted.

Remedy: Check the circuits and connecting cables.

12. PART LISTS

12.1 SPINDLE ASSEMBLY

12.1.1 SPINDLE ASSEMBLY DRAWING

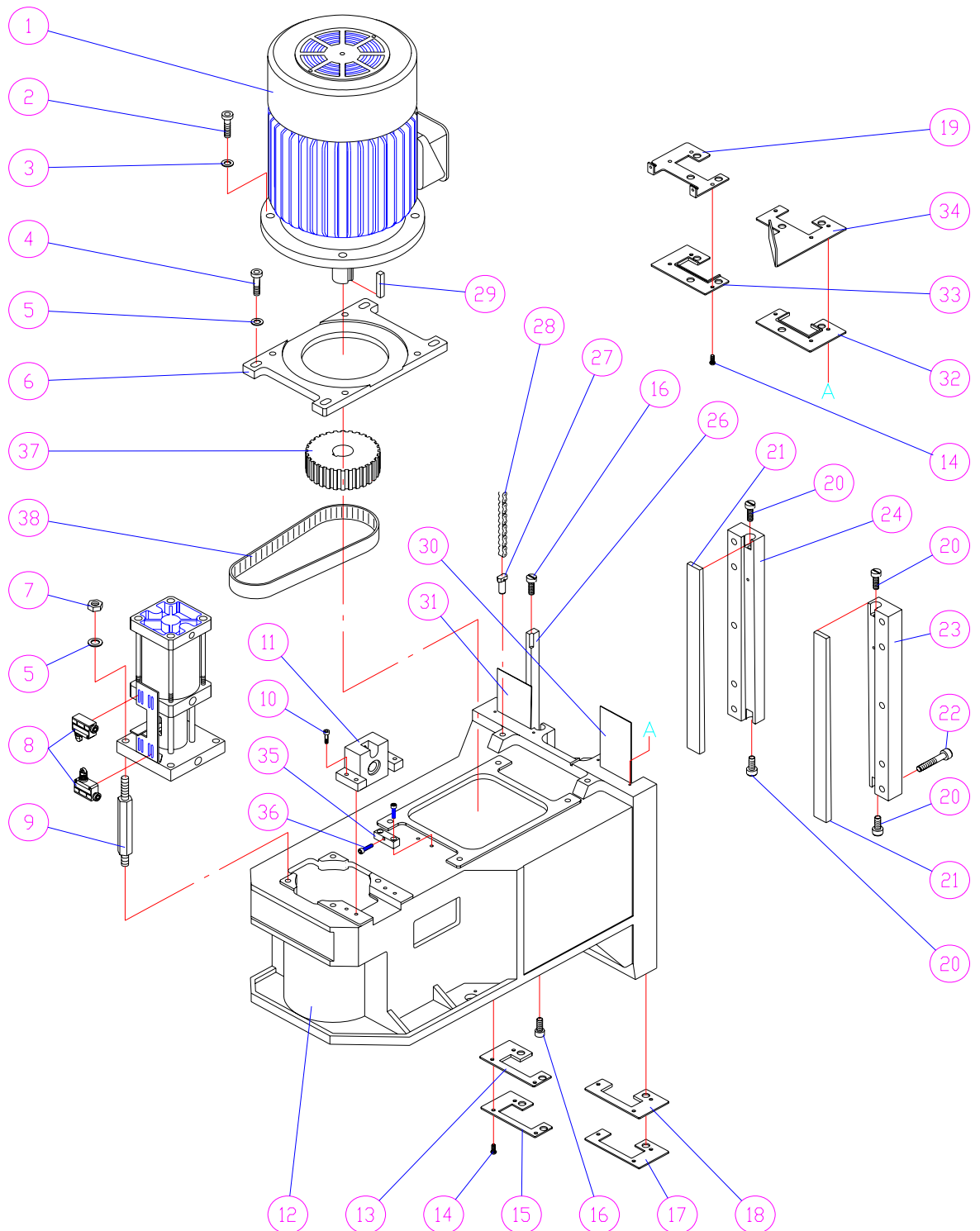


12.1.2 SPINDLE ASSEMBLY PARTS LIST

NO.	PART NO.	DESCRIPTION	QTY
1.	BT-40	TOOL HOLDER	1
2.	SA21010	KEY	2
3.	M6x20L	SOCKET CAP SCREW	6
4.	SA21020	FRONT CAP	1
5.	M8x25L	SOCKET CAP SCREW	6
6.	SA21030	RING	1
7.	SA21040	O RING	1
8.	7014	QUILL	4
9.	SA21050	RING	1
11.	SA21210	QUILL	1
12.	SA21070	SPACER	1
13.	SA21080	SPACER	1
14.	SSKE-P40/4 T-1	GRIPPER	1
15.	S-16	WASHER	1
16.	SA21090	WASHER	1
17.	SA21100	WASHER	1
18.	SA21110	SPACER	1
19.	MK-70	LOCK NUT	1
20.	31.5x16.3x2	SPRING	126
21.	SA21120	DRAW BAR	1
22.	SA21130	SPINDLE	1
23.	SA21140	SPACER	1
24.	7012	BALL BEARING	2
25.	SA21150	RING	1
26.	SA21220	BELT PULLEY	1
27.	16x10x45	KEY	1
28.	MK-60	LOCK NUT	1
29.	SA21170	NUT	1
30.	P26	O RING	1
31.	62x55x10	LOCK RING	2
32.	SA21230	LOCATOR	1
33.	SA21240	CAP	1
34.	M6x20L	SOCKET CAP SCREW	8
35.	M5x25L	SOCKET CAP SCREW	6
36.	SA21180	CAP	1
37.	M16	LOCK NUT	1
	SA21250	MOTER PULLEY	1

12.2 ELEVATING ASSEMBLY

12.2.1 ELEVATING ASSEMBLY DEAWING

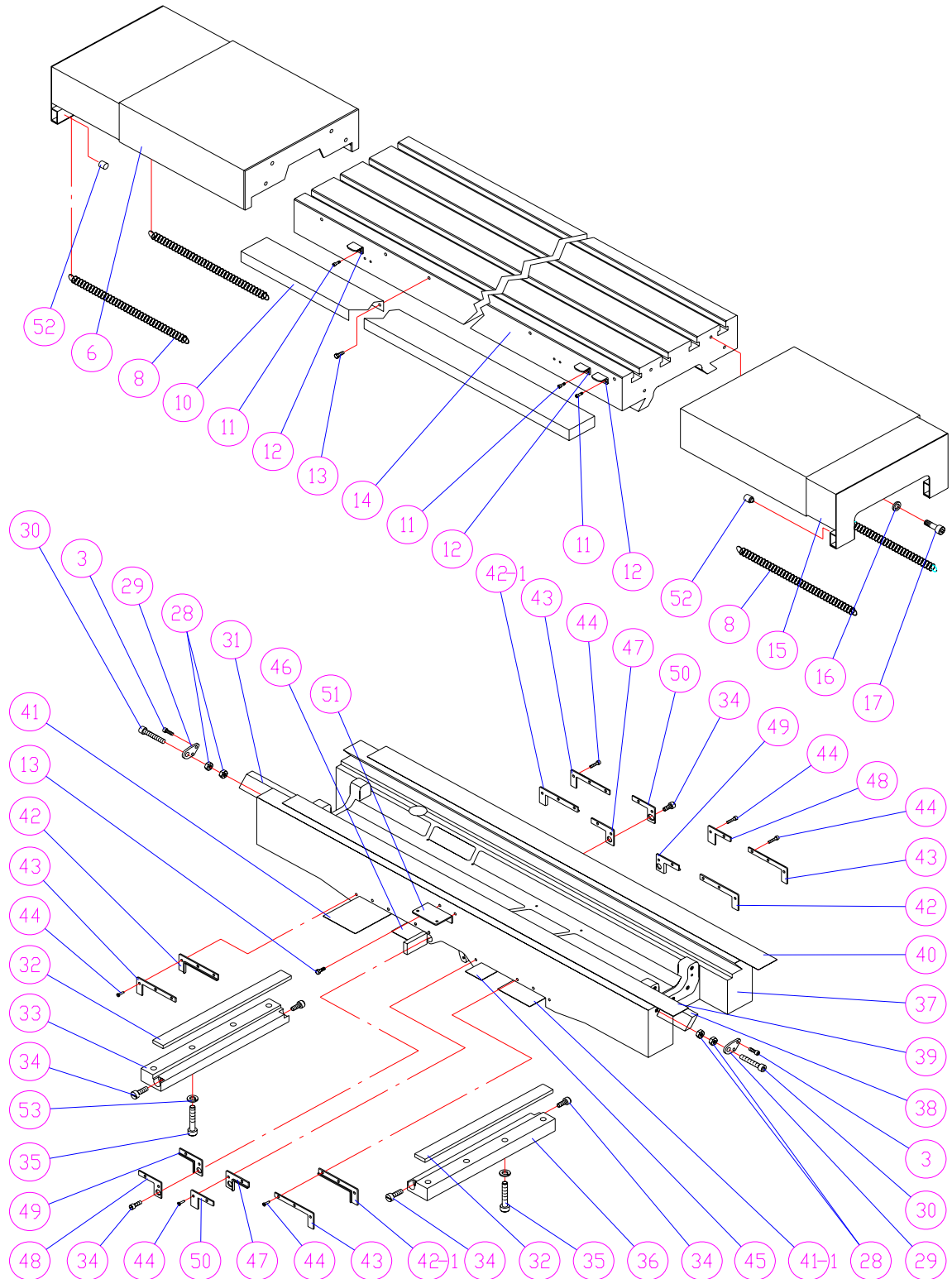


12.2.2 ELEVATING ASSEMBLY PARTS LIST

NO.	PART NO.	DESCRIPTION	QTY
1.		SPINDLE MOTOR	1
2.	SC-M14x40L	SOCKET CAP SCREW	4
3.	WS- ϕ 14	SPRING WASHER	4
4.	SC-M12x40L	SOCKET CAP SCREW	4
5.	WS- ϕ 12	SPRING WASHER	8
6.	B5-H049-00	MOTOR BASE	1
7.	HN-M12	NUT	4
8.	SLI-1	LIMIT SWITCH	2
9.	B8-H046-00	LOCK BOLT	4
10.	SC-M6x23L	SOCKET CAP SCREW	4
11.	B8-H044-00		1
12.	B8-A002-00	SPINDLE HEAD STOCK CASTING	1
13.	B5-Z015-L0	WIPER	1
14.	SC-M6x12L	ROUND HEAD SCREW	12
15.	B5-Z013-L0	WIPER HOLDER	1
16.	K2-C041-A0	ADJUSTING SCREW	2
17.	B5-Z013-R0	WIPER HOLDER	1
18.	B5-Z015-R0	WIPER HOLDER	1
19.	B5-Z007-L1	WIPER HOLDER	1
20.	K2-C041-00	ADJUSTING SCREW	4
21.	B8-Z024-00	GIB	2
22.	SC-M10x40L	SOCKET CAP SCREW	8
23.	B8-Z011-00	SLIDING RAIL	1
24.	B8-Z010-00	SLIDING RAIL	1
26.	B8-Z022-00	GIB	1
27.	B6-Z008-00	STUD	2
28.	RL-420-104L	CHAIN	1
29.	KY-	KEY	1
30.	B8-Z021-00	TURCITE	1
31.	B8-Z020-00	TURCITE	1
32.	B5-Z014-R0	WIPER	1
33.	B5-Z014-L0	WIPER	1
34.	B5-Z007-R0	WIPER HOLDER	1
35.	B8-H063-00	LOCK BLOCK	1
36.	M6x25L	SOCKET CAP SCREW	3
37.	B8-H051-00	8YU-48 HTD GEAR	1
38.	8YU-1096x42	BELT FOR SPINDLE	1

12.3 TABLE, SADDLE ASSEMBLY

12.3.1 TABLE. SADDLE ASSEMBLY DRAWING

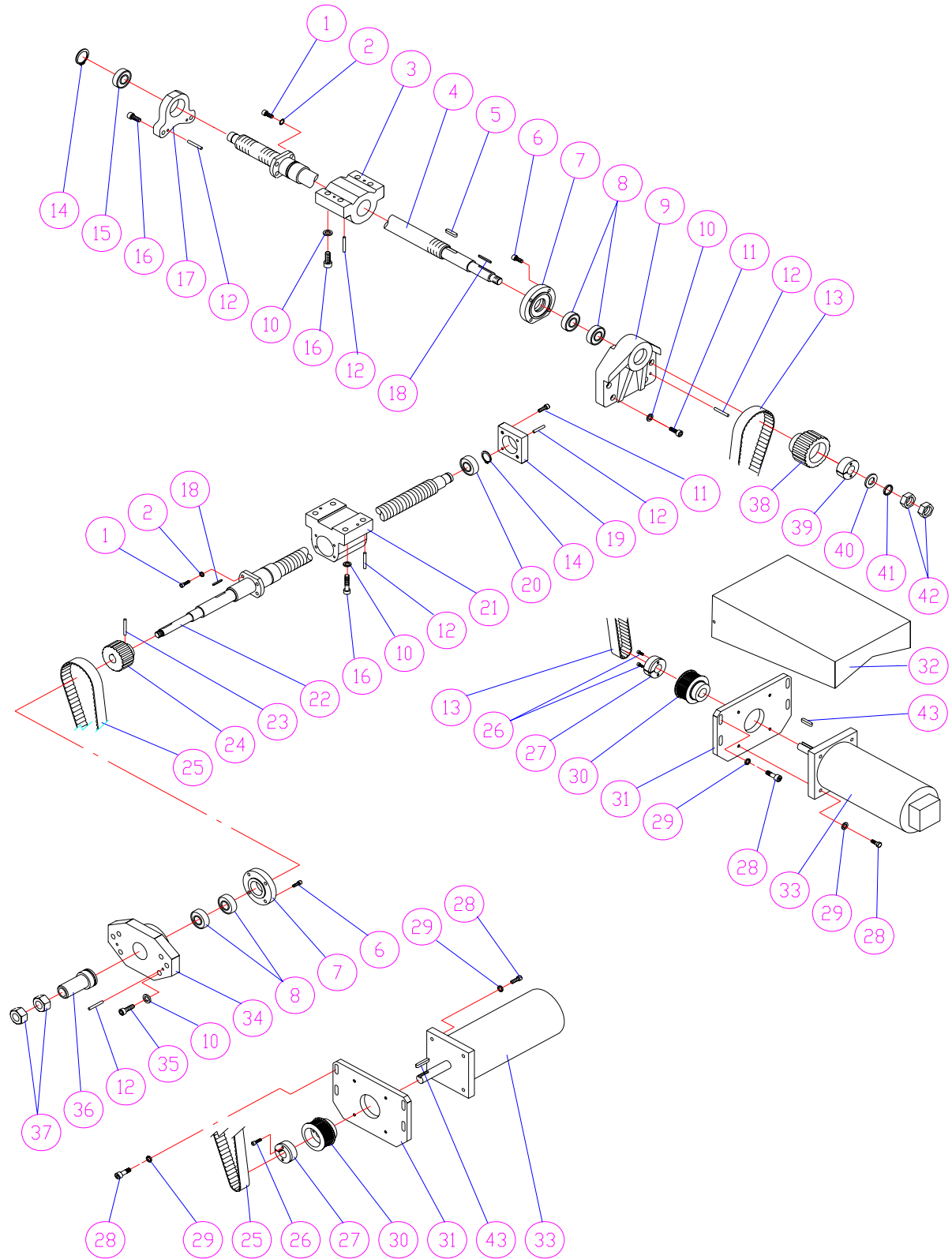


12.3.2 TABLE, SADDLE ASSEMBLY PARTS LIST

NO.	PART NO.	DESCRIPTION	QTY
3.	SC-M6x20L	SOCKET CAP SCREW	4
6.	B7-X013-L0	BRACKET	1
8.	SG- ϕ 8x ϕ 1x123L	SPRING	4
10.	B6-X020-01	LIMIT SWITCH COVER	1
11.	SC-M5x8L	SOCKET CAP SCREW	4
12.	B6-X016-01	DOG	2
13.	SC-M6x12L	SOCKET CAP SCREW	12
14.	A6-X001-00	WORK TABLE	1
15.	B7-X013-R0	BRACKET	1
16.	WS- ϕ 8	SPRING WASHER	8
17.	SC-M8x25L	SOCKET CAP SCREW	8
28.	HN-M10	NUT	4
29.	B6-X047-00	WASHER	2
30.	SC-M10x60L	SOCKET CAP SCREW	2
31.	B7-X048-00	TABLE/SADDLE GIB (LEFT)	1
32.	B6-Z024-00	GIB	3
33.	B6-Z011-00	SLIDING PAIL	1
34.	K2-C041-00	GIB ADJ-SCREW	6
35.	SC-M12x45L	SOCKET CAP SCREW	8
36.	B6-Z010-00	SLIDING RAIL	1
37.	A6-X002-00	SADDLE	1
38.	B7-X049-00	TABLE/SADDLE GIB (RIGHT)	1
39.	B7-C136-00	TURCITE	1
40.	B7-C137-00	TURCITE	1
41.	B7-C138-L0	TURCITE	1
41-1.	B7-C138-R0	TURCITE	1
42.	B7-Y050-00	WIPER	4
43.	B7-Y051-02	WIPER HOLDER	4
44.	SC-M5x10L	SOCKET CAP SCREW	16
45.	B7-C132-00	TURCITE	1
46.	B7-C131-00	TURCITE	1
47.	B7-Y053-01	WIPER HOLDER	2
48.	B7-Y054-01	WIPER HOLDER	2
49.	B7-Y052-01	WIPER HOLDER	2
50.	B7-Y055-01	WIPER HOLDER	2
51.	A6-X015-00	X AXIS LIMIT SWITCH BASE	1
52.		SILENCER	4

12.4 X, Y AXIS ASSEMBLY

12.4.1 X, Y AXIS ASSEMBLY DRAWING

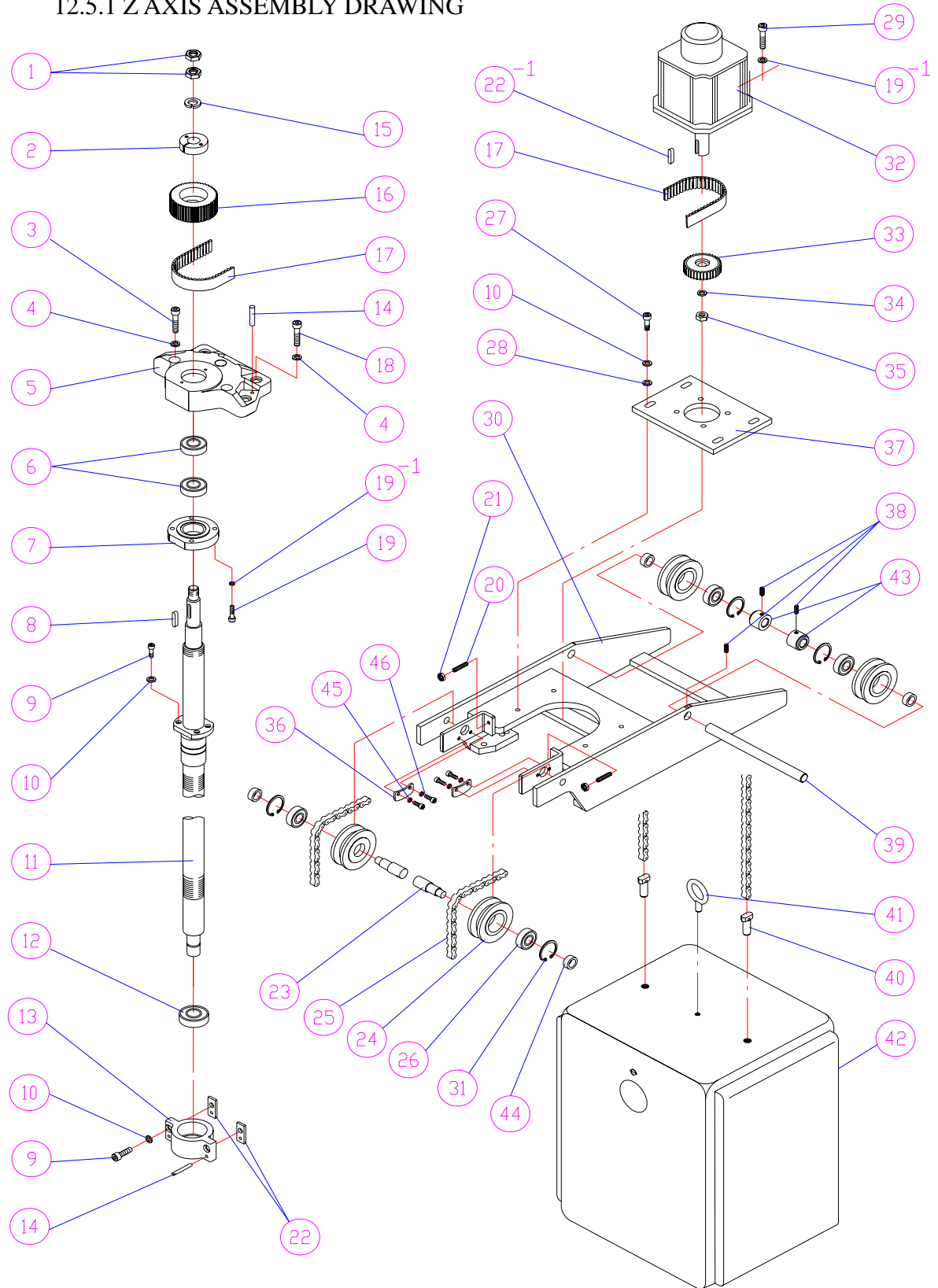


12.4.2 X,Y AXIS ASSEMBLY PARTS LIST

NO	PART NO	DESCRIPTION	QTY
1.	SC-M6x20L	SOCKET CAP SCREW	8
2.	WS- ϕ 6	SPRING WASHER	8
3.	B6-Y080-00	Y AXIS FEED NUT BRACKET	1
4.	A6-X017-M1	X AXIS BALL SCREW	1
5.	KY-6x6x25L	KEY	1
6.	SC-M6x16L	SOCKET CAP SCREW	8
7.	B6-YA11-00	BEARING CAP	2
8.	25TAA06DB	BALL BEARING	4
9.	B6-X005-00	X AXIS BEARING BRACKET	1
10.	WS- ϕ 10	SPRING WASHER	18
11.	SC-M10x35L	SOCKET CAP SCREW	6
12.	TP-#4x38L	TAPE PIN	11
13.	575-5Mx27	HTD BELT	1
14.	SE-20	SNAP RING	2
15.	6204ZZ	BALL BEARING	1
16.	SC-M10x40L	SOCKET CAP SCREW	10
17.	B7-X011-00	X AXIS BEARING BRACKET	1
18.	KY-6x6x25L	KEY	2
19.	B6-YA35-00	BEARING BRACKET	1
20.	6004ZZ	BALL BEARING	1
21.	B8-Y080-00	Y AXIS FEED NUT BRACKET	1
22.	B8-Y000-M2	Y AXIS BALL SCREW	1
23.	TP-#4x45L	TAPER PIN	1
24.	B6-Y030-T0	38T HTD GEAR	1
25.	615-5Mx27	HTD BELT	1
26.	SC-M6x30L	SOCKET CAP SCREW	4
27.	B3-X031-A1	LOCK BLOCK	2
28.	SC-M8x30L	SOCKET CAP SCREW	18
29.	WS- ϕ 8	SPRING WASHER	16
30.	B6-X008-T1	38T HTD PULLEY	2
31.	B7-X025-00	X AXIS MOTOR BASE	2
32.	B7-X007-00	COVER	1
33.	SEM	SERVO MOTOR	2
34.	B6-YA07-00	Y AXIS BEARING BRACKET	1
35.	SC-M10x25L	SOCKET CAP SCREW	6
36.	B6-YA08-B0	SPACER	1
37.	HN- ϕ 1/2"-20UNF	NUT	2
38.	B6-X030-T1	38T HTD GEAR	1
39.	B6-X031-02	LOCK BLOCK	1
40.	K5-C018-00	WASHER	1
41.	WS- ϕ 16	SPRING WASHER	1
42.	HN-5/8"-18UNF	NUT	2
43.	KY-3/16"x25L	KEY	2

12.5 Z AXIS ASSEMBLY

12.5.1 Z AXIS ASSEMBLY DRAWING

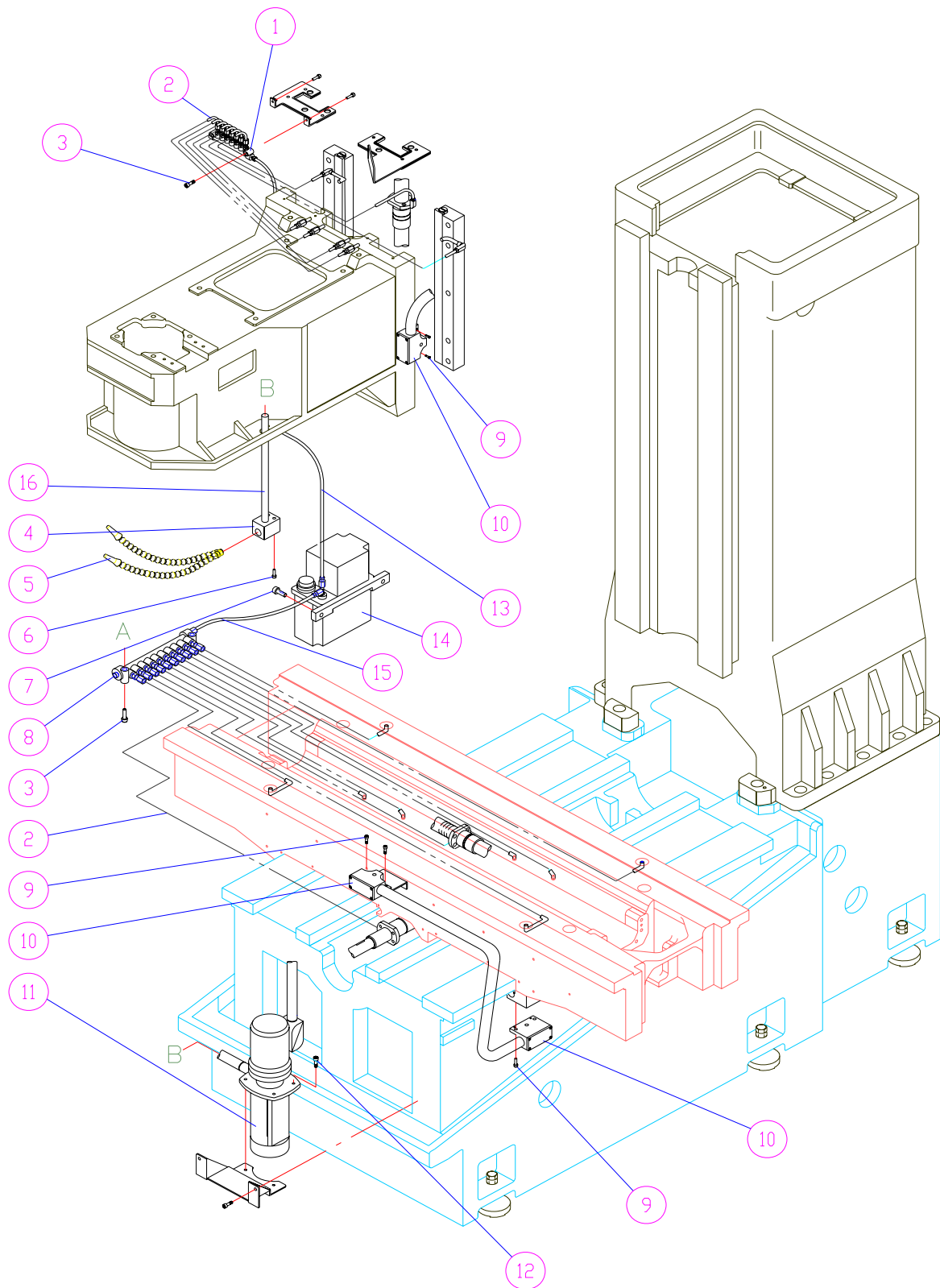


12.5.2 Z AXIS ASSEMBLY PARTS LIST

NO.	PART NO.	DESCRIPTION	QTY
1.	B8-Y035-00	NUT	2
2.	B6-X031-02	LOCK BLOCK	1
3.	SC-M10x50L	SOCKET CAP SCREW	2
4.	WS- ϕ 10	SPRING WASHER	6
5.	B6-Z001-01	Z AXIS BALL BEARING BRACKET	1
6.	25TAA06DB	BALL BEARING	2
7.	B8-Z002-00	BEARING CAP	1
8.	KY-6x6x25L	KEY	1
9.	SC-M8x30L	SOCKET CAP SCREW	6
10.	WS- ϕ 8	SPRING WASHER	14
11.	B8-Z000-M0	Z AXIS BALL SCREW	1
12.	6004ZZ	BALL BEARING	1
13.	B6-Z003-A0	BEARING BRACKET	1
14.	TP-#4x38L	TAPER PIN	4
15.	WF- ϕ 5/8"	SPRING WASHER	1
16.	B8-X030-00	57T HTD GEAR	1
17.	HTD-500x27	HTD BELT	1
18.	SC-M10x40L	SOCKET CAP SCREW	4
19.	SC-M6x20L	SOCKET CAP SCREW	4
19-1.	WS- ϕ 6	SPRING WASHER	10
20.	SS-M6x45L	HEADLESS SET SCREW	2
21.	HN-M6	NUT	2
22.	B6-Z004-00	CLAMPING PLATE	2
22-1.	5x5x18L	KEY	1
23.	A6-C036-00	BALANCING PULLEY SHAFT	2
24.	V5-Z037-00	BALANCING PULLEY	4
25.	SC-428	CHAIN	2
26.	6202	BALL BEARING	4
27.	SC-M8x25L	SOCKET CAP SCREW	8
28.	WF- ϕ 8	FLAT WASHER	4
29.	SC-M6x25L	SOCKET CAP SCREW	4
30.	A6-Z029-01	BALANCING BASE	1
31.	R-35	SNAP RING	4
32.	MOTOR	SERVO MOTOR	1
33.	B6-X008-D0	HTD GEAR	1
34.	2V-YA07-00	SIDE PIECE	1
35.	B3-X031-A1	LOCK BLOCK	1
36.	A6-Z043-00	WASHER	2
37.	B6-Z034-00	MOTOR BASE	1
38.	SS-M6x8L	HEADLESS SET SCREW	3
39.	A6-Z038-00	BALANCING PULLEY SHAFT	1
40.	B6-Z008-00	BALANCING SCREW	2
41.	HB-M8	HOOK BOLT	1
42.	B8-A005-01	BALANCING BLOCK	1
43.	A6-Z056-00	SPACER	2
44.	A6-Z039-00	SPACER	4
45.	WS- ϕ 5x4	SPRING WASHER	4
46.	SC-M5x12L	SOCKET CAP SCREW	4

12.6 LUBRICATION, COOLANT ASSEMBLY

12.6.1 LUBRICATION, COOLANT ASSEMBLY DRAWING



12.6.2 LUBRICATION, COOLANT ASSEMBLY PARTS LIST

NO.	PART NO.	DESCRIPTION	QTY
1.	OD-A7P	OIL DISTRUBTE	1
2.	LT- ϕ 4	LUBRICATING OIL TUBING	19
3.	M6x25L	SOCKET CAP SCREW	4
4.	K2-C020-00	COOLANT TUBES BRACKET	1
5.	ϕ 3/8" x 16"	COOLANT TUBES	1
6.	M6x40L	SOCKET CAP SCREW	2
7.	M6x20L	SOCKET CAP SCREW	2
8.	OD-A12P	OIL DISTRIBUTE	1
9.	M5x16L	SOCKET CAP SCREW	6
10.	LR50067	LIMIT SWITCH	3
11.	13L-1/8HP	COOLANT PUMP	1
12.	M6x12L	SOCKET CAP SCREW	4
13.	LS ϕ 4 x 1.4M	LUBRICATING STRING	1
14.	CSED	ELECTRONIC LUBRICATION	1
15.	LS ϕ 4 x 1M	LUBRICATING STRING	1
16.	SCH-3/8" x 78"	STAINLESS STEEL COVEYING HOSES	1