

Install side cover



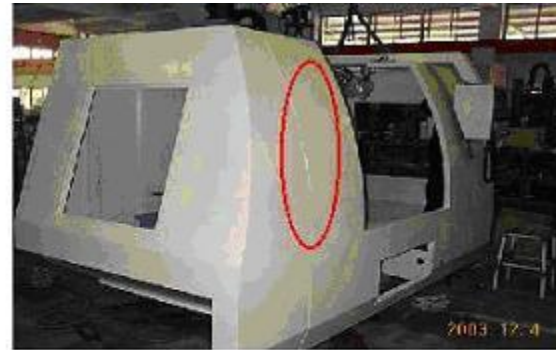
Remove the side cover 's screws from full enclosure



Move the side cover next to the side of full enclosure



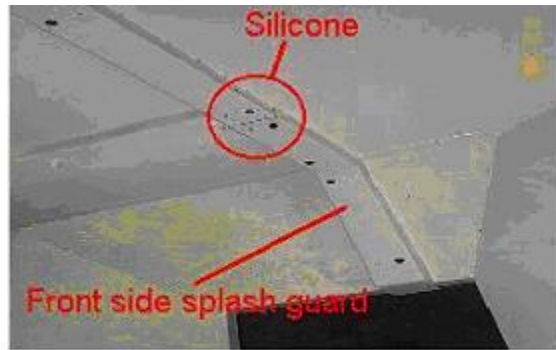
Tighten screws from front and below side first



Make sure the outside of cover full enclosure are neat & tighten screws



Tighten screws of crack cover which is between side cover & main cover



Tighten screws of crack cover which is between side cover & main cover



Tighten screws for top cover. Use silicone on front & back crack for leaking proof



Make sure the door is symmetrical after adjusting machine leveling. Adjusting doors by 2 adjustable screws whose are below full enclosure.