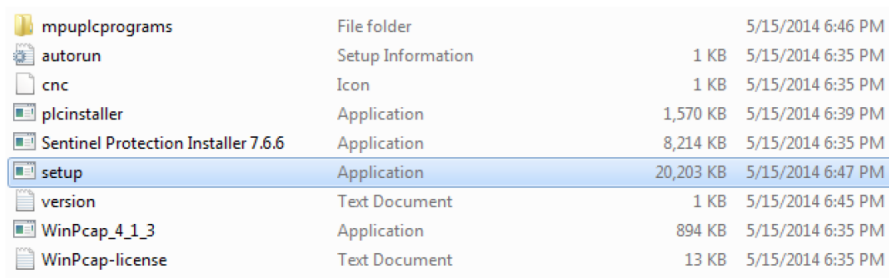


## Upgrade Centroid Software Newest Version

- 1- Download the attached file onto a USB stick.
- 2- Insert the USB stick into the Centroid control.
- 3- From the main screen, press F10(Shut Down)->F9(Exit CNC11) to get to Windows.
- 4- Using a mouse, double-click on the USB drive, typically d:\.

Double click Centroid CNC-V3.16 folder. Then double click “SET UP “ to begin install

4. Double click the centroid-cnc11-v314 folder. Then double click “setup” to begin CNC11 install as seen in Figure 3.2.2



mpuplprograms	File folder		5/15/2014 6:46 PM
autorun	Setup Information	1 KB	5/15/2014 6:35 PM
cnc	Icon	1 KB	5/15/2014 6:35 PM
plcinstaller	Application	1,570 KB	5/15/2014 6:39 PM
Sentinel Protection Installer 7.6.6	Application	8,214 KB	5/15/2014 6:35 PM
<b>setup</b>	Application	20,203 KB	5/15/2014 6:47 PM
version	Text Document	1 KB	5/15/2014 6:45 PM
WinPcap_4_1_3	Application	894 KB	5/15/2014 6:35 PM
WinPcap-license	Text Document	13 KB	5/15/2014 6:35 PM

Figure 3.2.2  
Double click **Setup**

5. Windows may ask “Do you want to allow the following program from an unknown publisher to make changes on this computer?”

Click “Yes”.

You select CNC11 Mill for Mill machine

6. Select **CNC11 Mill** and **WinPcap** for a Mill installation as shown in Figure 3.2.3.

Select **CNC11 Lathe** and **WinPcap** for a Lathe installation.

Click **Next**, accept default installation servo drive and directory (c:\) and click **Install** as seen in Figure 3.2.4. The software will extract as shown in Figure 3.2.5.

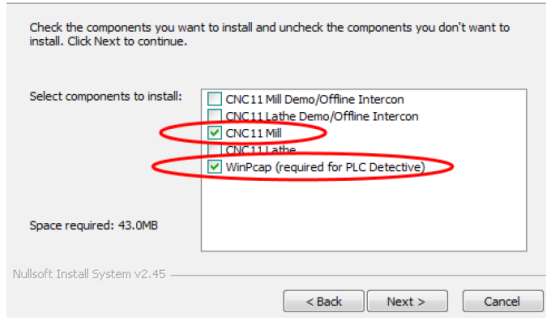


Figure 3.2.3  
Select CNC11 and WinPcap

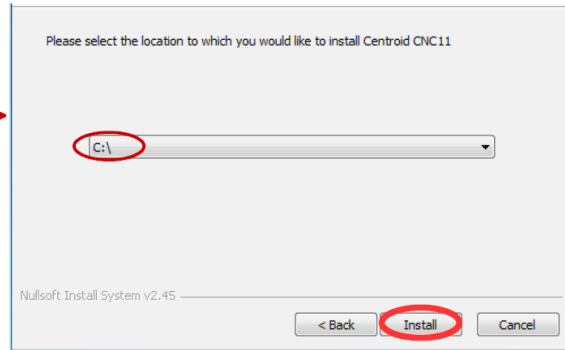


Figure 3.2.4  
Select the C drive

7. **Install WinPcap:** Click **Next** in the WinPcap Setup Wizard window as circled in Figure 3.2.6.

Check the **Automatically start the WinPcap at boot** box when prompted (not shown).

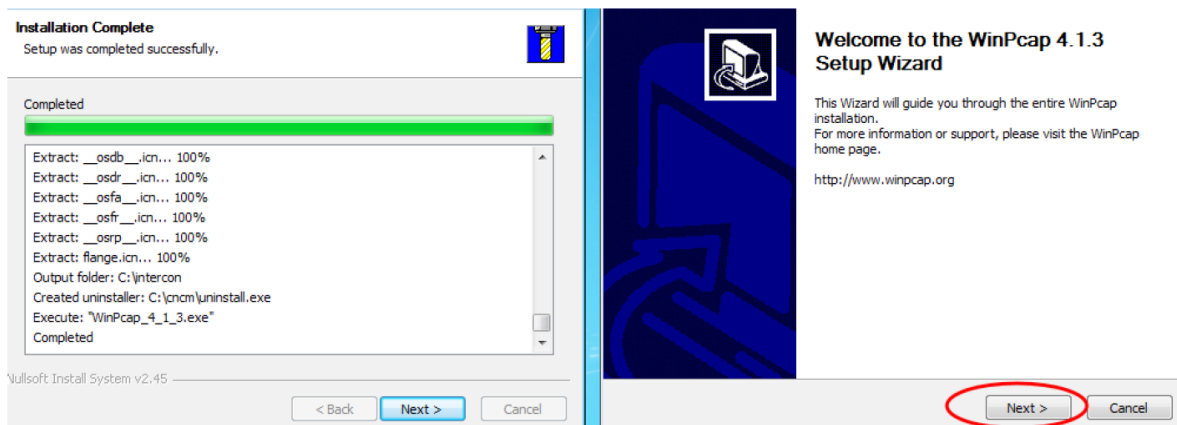
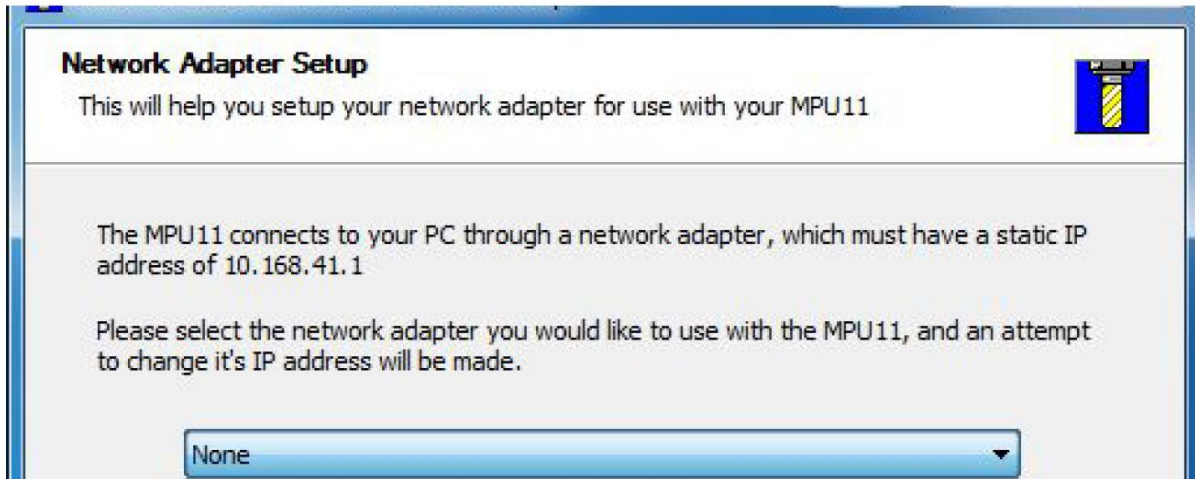


Figure 3.2.5  
Software installation

Figure 3.2.6  
Installation complete



Would you like install PLC? Select NO

**You don't install the PLC program.**

Then select Finish and then Power off.