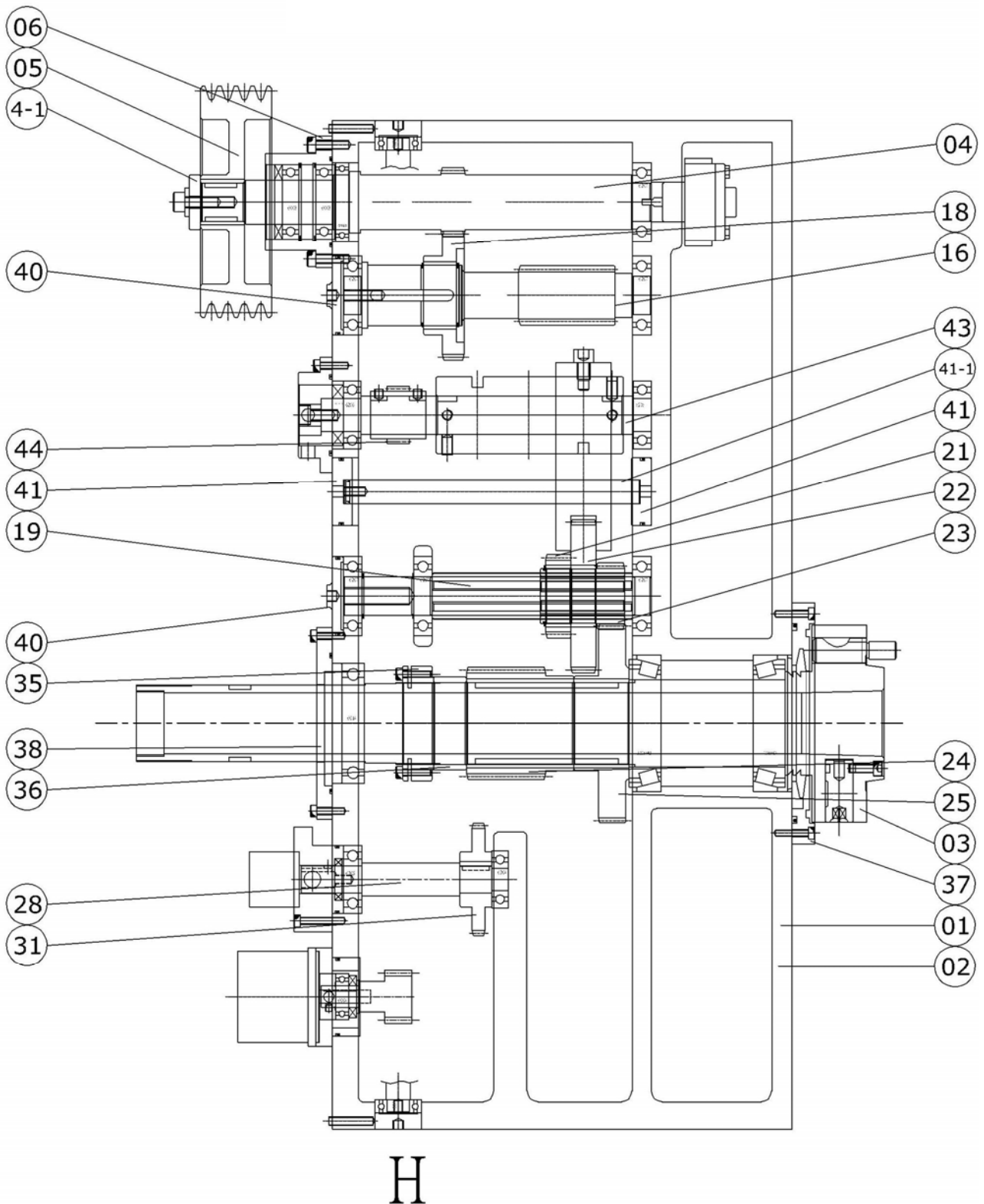


MACHINE PARTS LIST

(KL-1800 / KL-2100 / KL-2400)

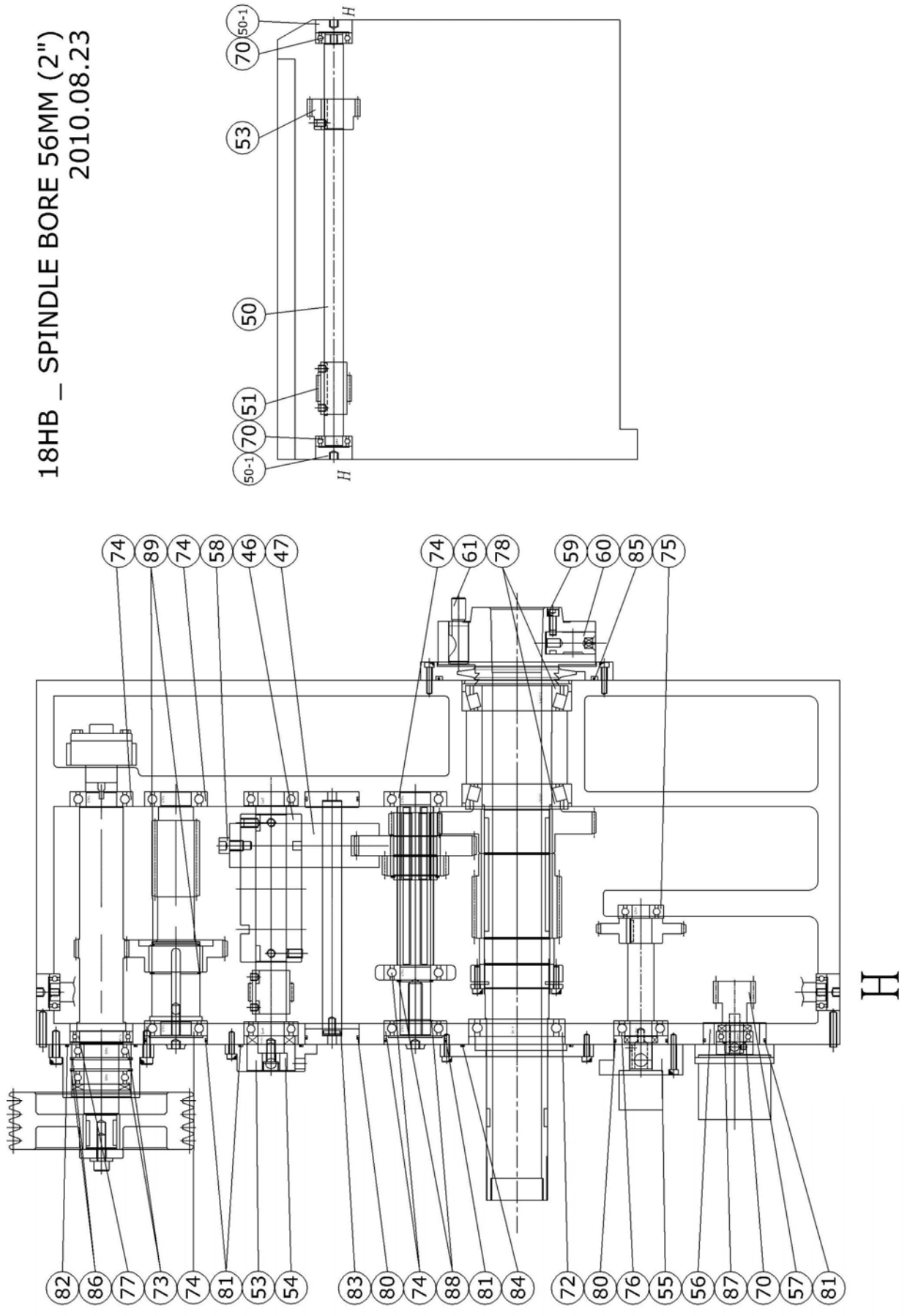
8.1 HEADSTOCK

8.1.1 18 HB, SPINDLE BORE 56mm (2")



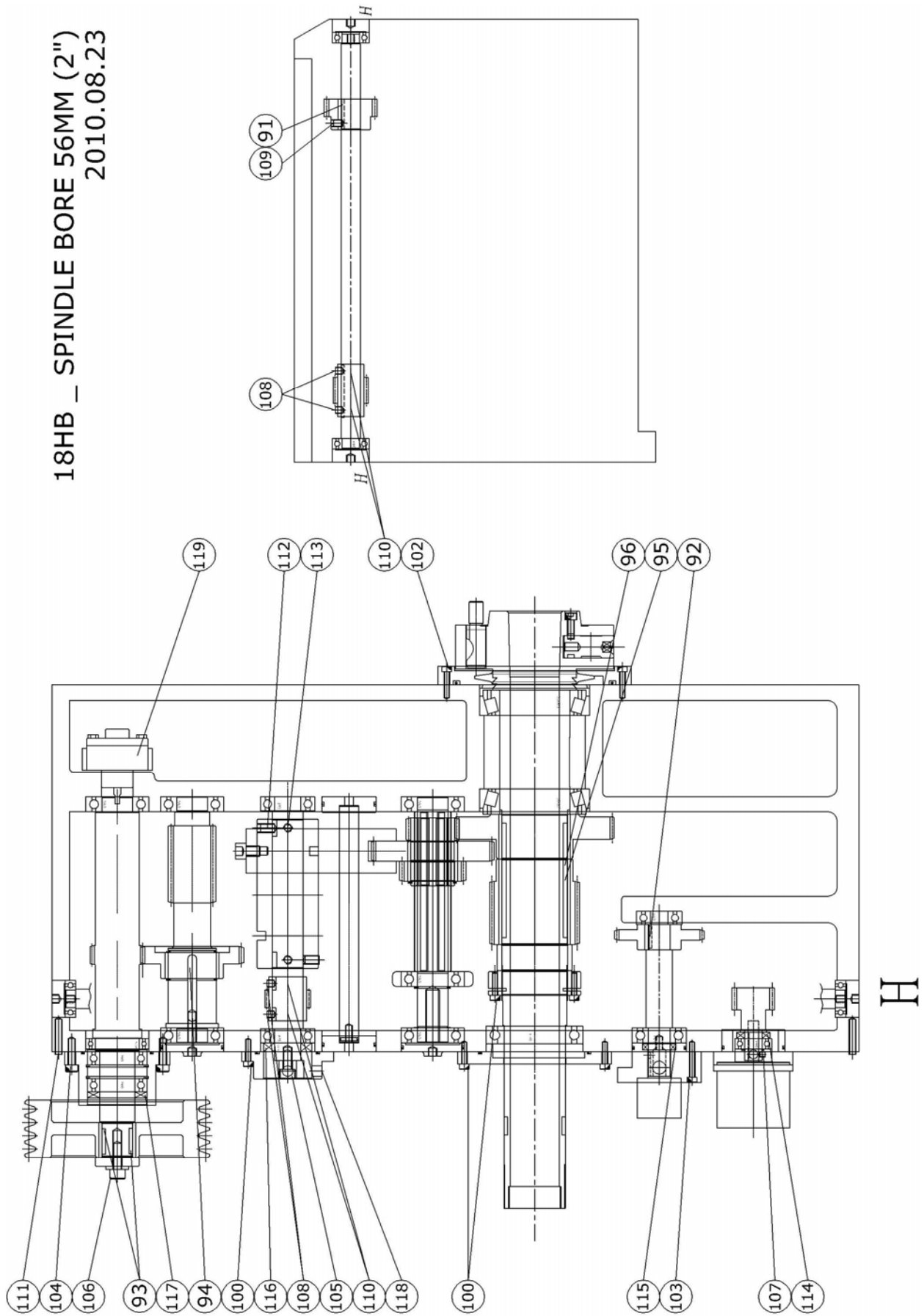
No.	PARTS NO.	DESCRIPTION	Q'TY	NOTE
1	18HB-001000	Headstock	1	
2	25HA-002000	Cover	1	
3	25HA-0030D0	Spindle	1	
	25HA-0030A0	Spindle	1	
4	18HB-0041A0	Tooth Shaft	1	
4-1	18HA-004100	Washer	1	
5	18HA-0052A0	V-Pulley	1	
6	18HA-006A00	Cover	1	
16	18HA-016000	Tooth Shaft	1	
18	18HA-018000	Gear	1	
19	18HA-019000	Spline Shaft	1	
21	18HA-021000	Gear	1	
22	18HA-022000	Gear	1	
23	18HA-023000	Gear	1	
24	18HA-024000	Gear	1	
25	18HA-025000	Gear	1	
28	18HB-014100	Shaft	1	
	18HB-014200	Shaft	1	Opt.
	18HB-014500	Shaft	1	Opt.
31	18HA-031000	Gear	1	
35	18HA-035000	Clocker Nut	1	
36	18HA-036000	Coller	1	
37	18HA-037001	Cover	1	
38	18HA-038000	Cover	1	
40	18HA-040000	Cover	2	
41	18HA-041000	Cover	2	
41-1	18HA-041100	Fixed Axle	1	
43	18HB-017000	Shaft	1	
44	18HB-021000	Bevel Gear	1	

18HB _ SPINDLE BORE 56MM (2")
2010.08.23



No.	PARTS NO.	DESCRIPTION	Q'TY	NOTE
46	18HB-022000	Cam	1	
47	18HB-023000	Speed Change Fork	1	
50	25HB-024000	Shaft	1	
50-1	18HB-024100	Stuff	2	
51	18HB-025000	Worm Gear	1	
52	18HB-026000	Bevel Gear	1	
53	18HB-020000	Measuring Post	1	
54	18HB-019000	Block	1	
55	18HB-015000	Cover	1	
56	18HB-028002	Cover	1	
57	18HB-027002	Worm Gear	1	
58	18HB-048000	Screw	1	
59	18HA-074000	Screw	6	
60	18HA-075000	Cam	6	
61	18HA-076000	Chort Columu	6	
70	Bearing	6004	3	
71	Bearing	6008	2	
72	Bearing	6014Z	1	
73	Bearing	6206	2	
74	Bearing	6207	6	
75	Bearing	6304	1	
76	Bearing	6305	1	
77	Bearing	6910	1	
78	Tapered Roller Bearing	32016	2	
80	O-Ring	G55	2	
81	O-Ring	G65	4	
82	O-Ring	G75	1	
83	O-Ring	P18	1	
84	O-Ring	G120	1	
85	O-Ring	G170	1	
86	C-Locker	R68	2	
87	C-Locker	S20	1	
88	C-Locker	S35	2	
89	C-Locker	S55	2	

18HB _ SPINDLE BORE 56MM (2")
2010.08.23

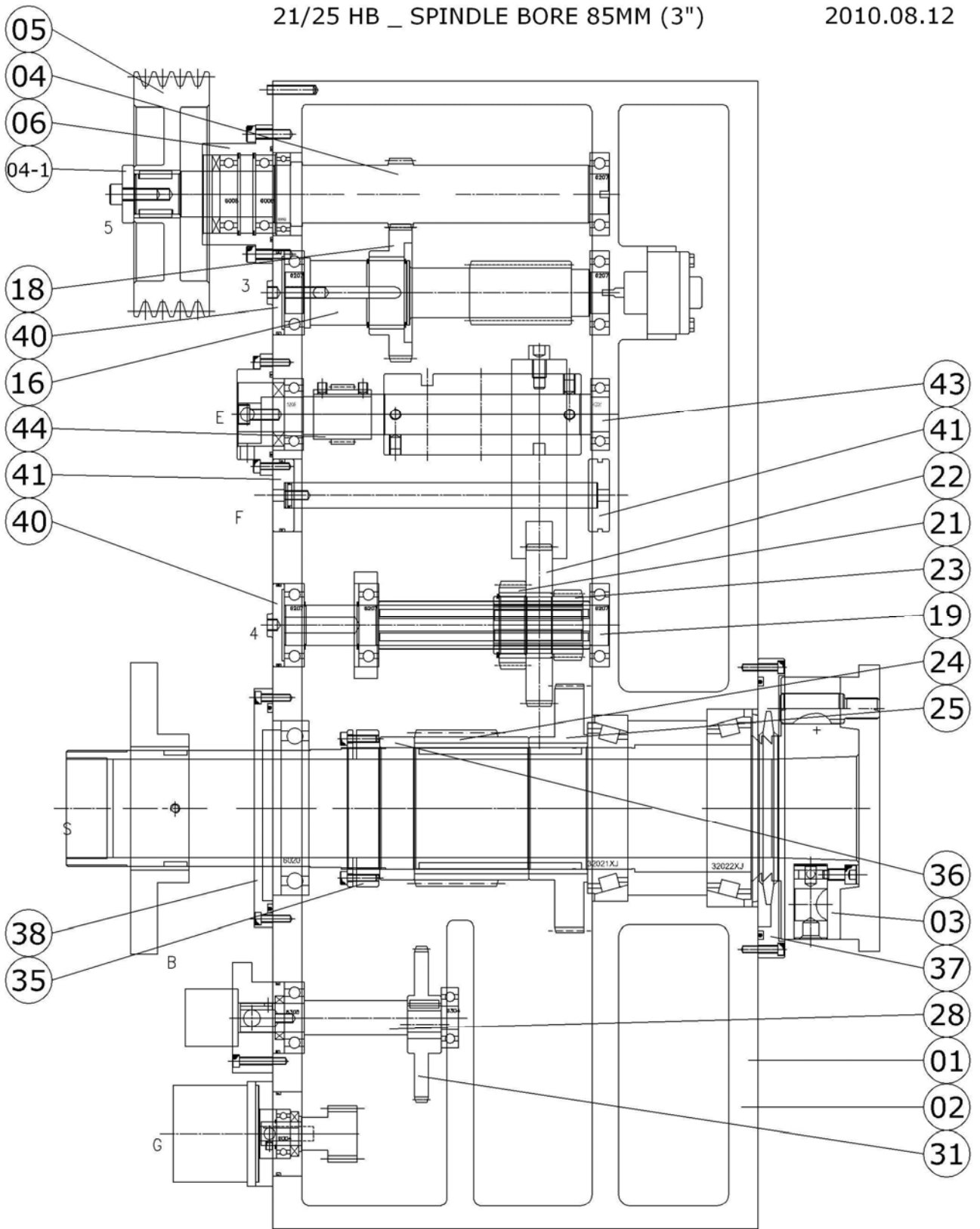


No.	PARTS NO.	DESCRIPTION	Q'TY	NOTE
91	Key	6*6*28	1	
92	Key	8*7*25	1	
93	Key	8*7*28	2	
94	Key	10*8*25	2	
95	key	10*8*60	2	
96	Key	10*8*70	2	
100	Cap Screw	M6*25	12	
102	Cap Screw	M6*30	6	
103	Cap Screw	M6*40	3	
104	Cap Screw	M8*30	4	
105	Cap Screw	M10*20	1	
106	Cap Screw	M10*30	1	
107	Set Screw	M6*6	1	
108	Set Screw	M8*8	4	
109	Set Screw	M8*10	1	
110	Set Screw	M8*18	4	
111	Set Screw	M8*40	1	
112	Set Screw	M10*10	4	
113	Set Screw	M10*16	2	
114	Oil Seal	20*38*7	1	
115	Oil Seal	25*38*8	1	
116	Oil Seal	30*55*10	1	
117	Oil Seal	40*68*7	1	
118	Sensor		3	
119	Oil Pump		1	

8.1.2 21/25 HB, SPINDLE BORE 85MM (3")

21/25 HB _ SPINDLE BORE 85MM (3")

2010.08.12

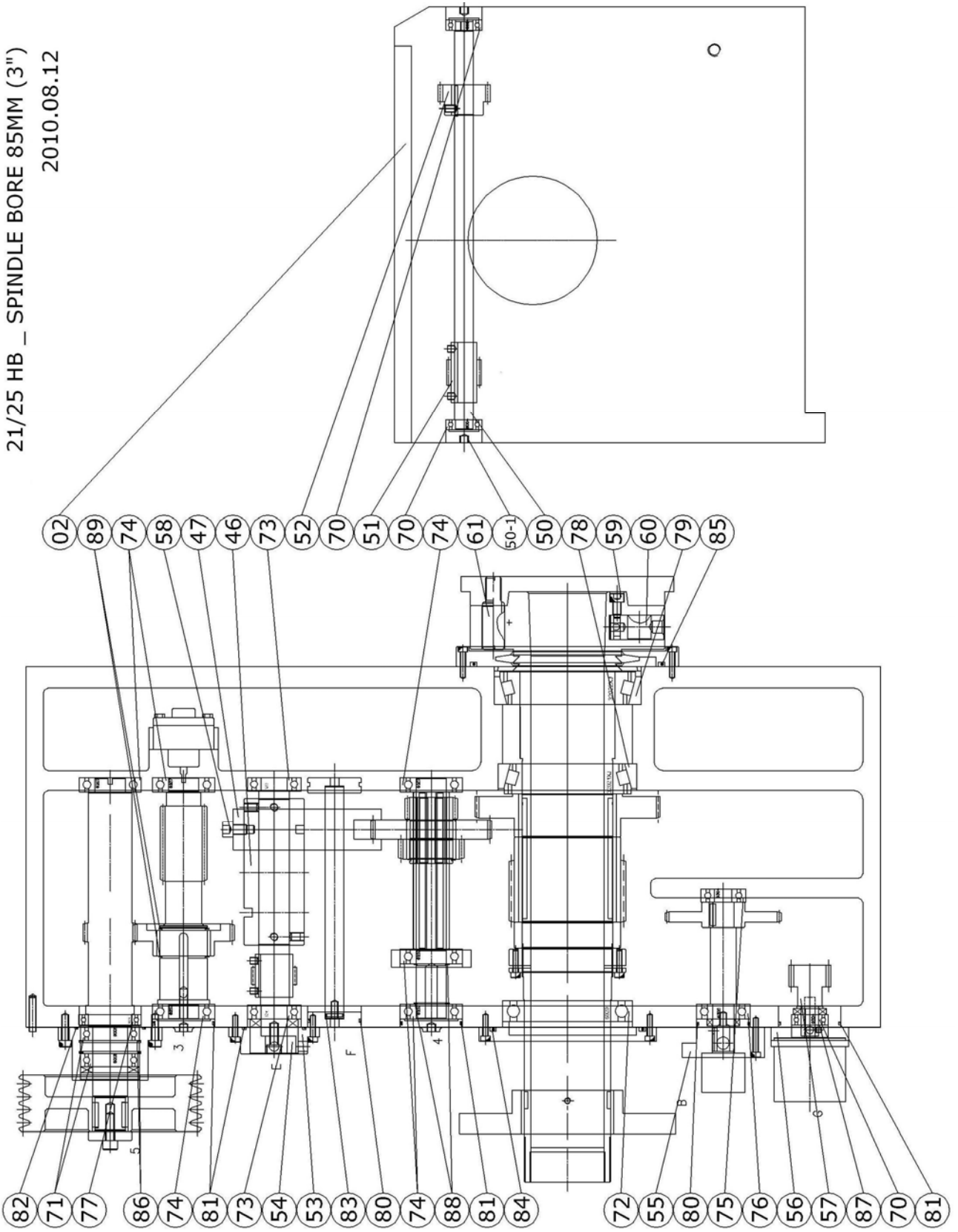


Parts list of 21/25 Headstock, Spindle bore 85mm (3'')

Date : 2010-08-12

No.	PARTS NO.	DESCRIPTION	Q'TY	NOTE
1	21HB-001000	Headstock	1	
	25HB-001000	Headstock	1	
2	25HA-002000	Cover	1	
3	25HA-0030D0	Spindle	1	
	25HA-0030A0	Spindle	1	Opt.
4	18HB-0041A0	Tooth Shaft	1	
4-1	18HA-004100	Washer	1	
5	18HA-0051A0	V-Pulley	1	
6	18HA-006A00	Cover	1	
16	18HA-016000	Tooth Shaft	1	
18	18HA-018000	Gear	1	
19	18HA-019000	Spline Shaft	1	
21	18HA-021000	Gear	1	
22	18HA-022000	Gear	1	
23	18HA-023000	Gear	1	
24	25HA-024000	Gear	1	
25	25HA-025000	Gear	1	
28	18HB-014100	Shaft	1	Opt.
	18HB-014200	Shaft	1	Opt.
	18HB-014500	Shaft	1	Opt.
31	25HB-031000	Gear	1	
35	25HA-035000	Clocker Nut	1	
36	25HA-036000	Coller	1	
37	25HA-037001	Cover	1	
38	25HA-038000	Cover	1	
40	18HA-040000	Cover	2	
41	18HA-041000	Cover	2	
43	18HB-017000	Shaft	1	
44	18HB-021000	Bevel Gear	1	

21/25 HB _ SPINDLE BORE 85MM (3")
 2010.08.12



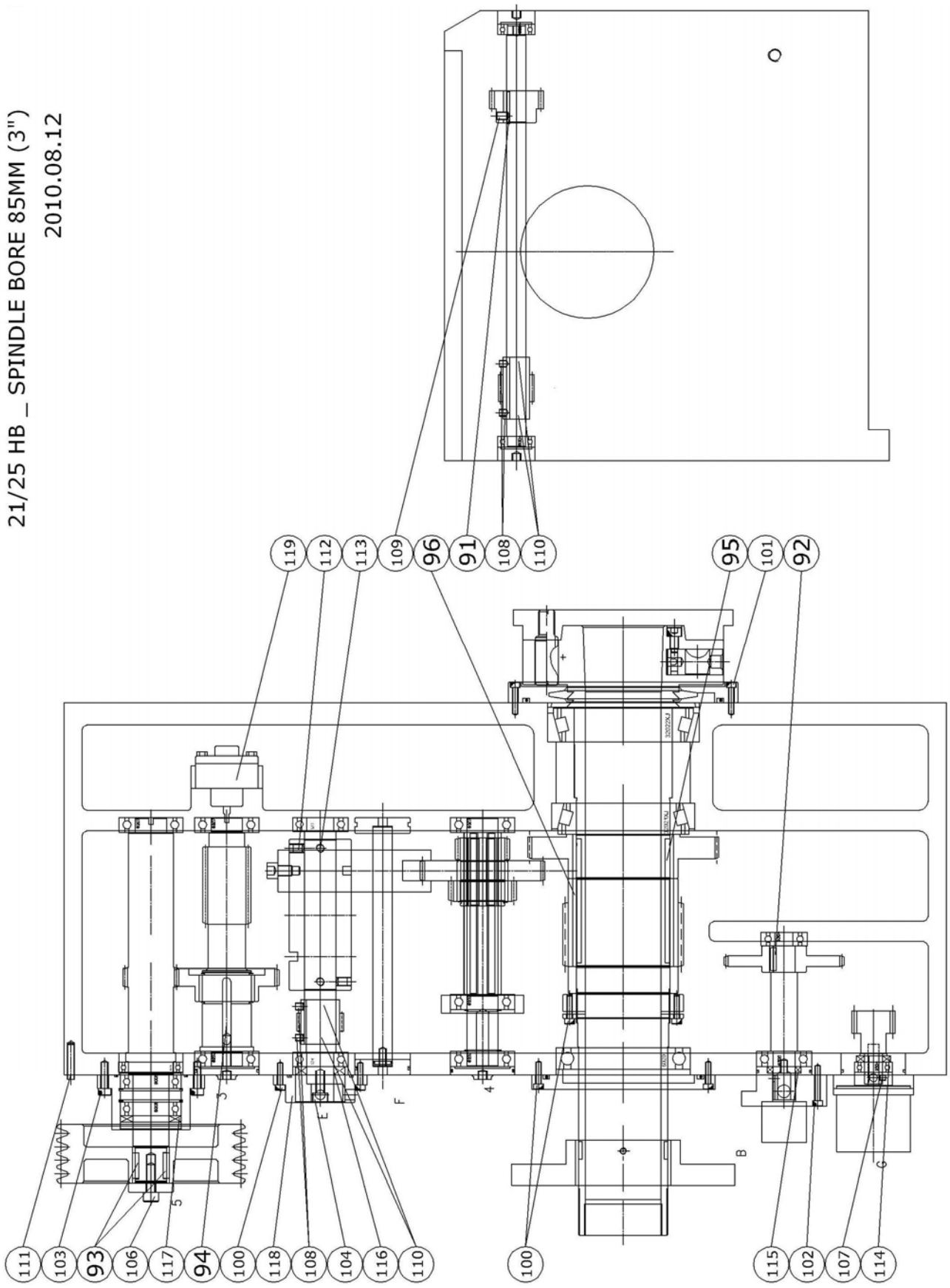
Parts list of 21/25 Headstock, Spindle bore 85mm (3")

Date :

2010-08-12

No.	PARTS NO.	DESCRIPTION	Q'TY	NOTE
46	18HB-022000	Cam	1	
47	18HB-023000	Speed Change Fork	1	
50	25HB-024000	Shaft	1	
50-1	18HB-024100	Stuff	2	
51	18HB-025000	Worm Gear	1	
52	18HB-026000	Bevel Gear	1	
53	18HB-020000	Measuring Post	1	
54	18HB-019000	Block	1	
55	18HB-015000	Cover	1	
56	18HB-028001	Cover	1	
57	18HB-027000	Worm Gear	1	
58	18HB-048000	Screw	1	
59	25HA-074000	Screw	6	
60	25HA-075000	Cam	6	
61	25HA-076000	Chort Columu	6	
70	Bearing	6004	3	
71	Bearing	6008	2	
72	Bearing	6020Z	1	
73	Bearing	6206	2	
74	Bearing	6207	6	
75	Bearing	6304	1	
76	Bearing	6305	1	
77	Bearing	6910	1	
78	Tapered Roller Bearing	32021	1	
79	Tapered Roller Bearing	32022	1	
80	O-Ring	G55	2	
81	O-Ring	G65	4	
82	O-Ring	G75	1	
83	O-Ring	P18	1	
84	O-Ring	G165	1	
85	O-Ring	G210	1	
86	C-Locker	R68	2	
87	C-Locker	S20	1	
88	C-Locker	S35	2	
89	C-Locker	S55	2	

21/25 HB _ SPINDLE BORE 85MM (3")
 2010.08.12



Parts list of 21/25 Headstock, Spindle bore 85mm (3")

Date :

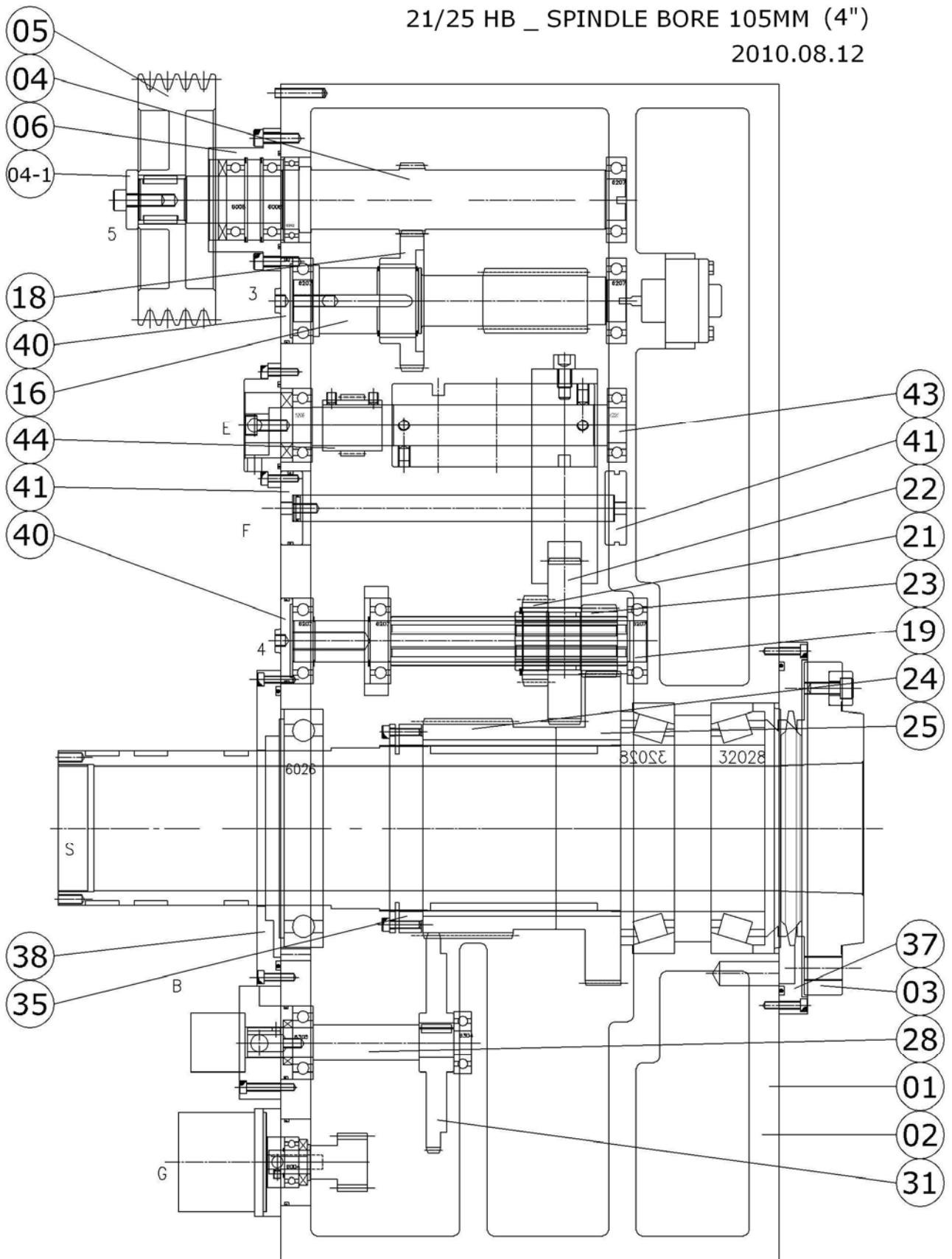
2010-08-12

No.	PARTS NO.	DESCRIPTION	Q'TY	NOTE
91	Key	6*6*28	1	
92	Key	8*7*25	1	
93	Key	8*7*28	2	
94	Key	10*8*25	2	
95	key	14*9*60	2	
96	Key	14*9*80	2	
100	Cap Screw	M6*25	15	
102	Cap Screw	M6*40	3	
103	Cap Screw	M8*30	4	
104	Cap Screw	M10*20	1	
105	Cap Screw	M10*25	1	
106	Cap Screw	M10*30	1	
107	Set Screw	M6*6	1	
108	Set Screw	M8*8	4	
109	Set Screw	M8*10	1	
110	Set Screw	M8*18	4	
111	Set Screw	M8*40	1	
112	Set Screw	M10*10	4	
113	Set Screw	M10*16	2	
114	Oil Seal	20*38*7	1	
115	Oil Seal	25*38*8	1	
116	Oil Seal	30*55*10	1	
117	Oil Seal	40*68*7	1	
118	Sensor		3	
119	Oil Pump		1	

8.1.3 21/25 HB, SPINDLE BORE 105MM (4") OPTION

21/25 HB _ SPINDLE BORE 105MM (4")

2010.08.12

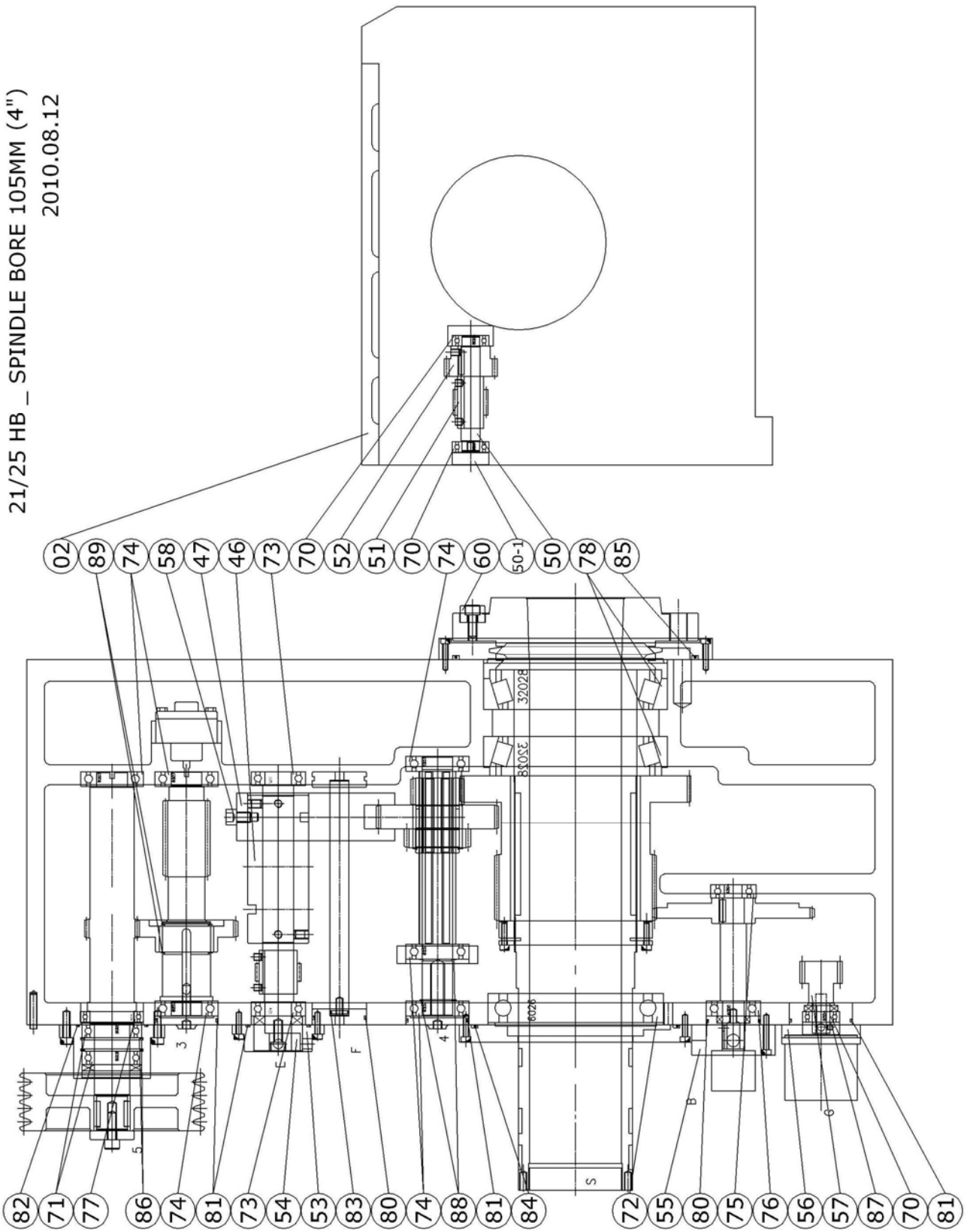


Parts list of 21/25 Headstock, Spindle bore 105mm (4")

Date : 2010-08-12

No.	PARTS NO.	DESCRIPTION	Q'TY	NOTE
1	21HB-401000	Headstock	1	Opt.
	25HB-401000	Headstock	1	Opt.
2	25HA-002000	Cover	1	
3	25HA-4030D0	Spindle	1	
	25HA-4030A0	Spindle	1	Opt.
4	18HB-0041A0	Tooth Shaft	1	
4-1	18HA-004100	Washer	1	
5	18HA-0051A0	V-Pulley	1	
6	18HA-006A00	Cover	1	
16	18HA-016000	Tooth Shaft	1	
18	18HA-018000	Gear	1	
19	25HA-419000	Spline Shaft	1	
21	25HA-421000	Gear	1	
22	25HA-422000	Gear	1	
23	25HA-423000	Gear	1	
24	25HA-424000	Gear	1	
25	25HA-425000	Gear	1	
28	18HB-014100	Shaft	1	Opt.
	18HB-014200	Shaft	1	Opt.
	18HB-014500	Shaft	1	Opt.
31	25HB-431000	Gear	1	
35	25HA-435000	Clocker Nut	1	
37	25HA-4370A1	Cover	1	
	25HA-4370D0	Cover	1	
38	25HA-438000	Cover	1	
40	18HA-040000	Cover	2	
41	18HA-041000	Cover	2	
43	18HB-017000	Shaft	1	
44	18HB-021000	Bevel Gear	1	

21/25 HB _ SPINDLE BORE 105MM (4")
2010.08.12

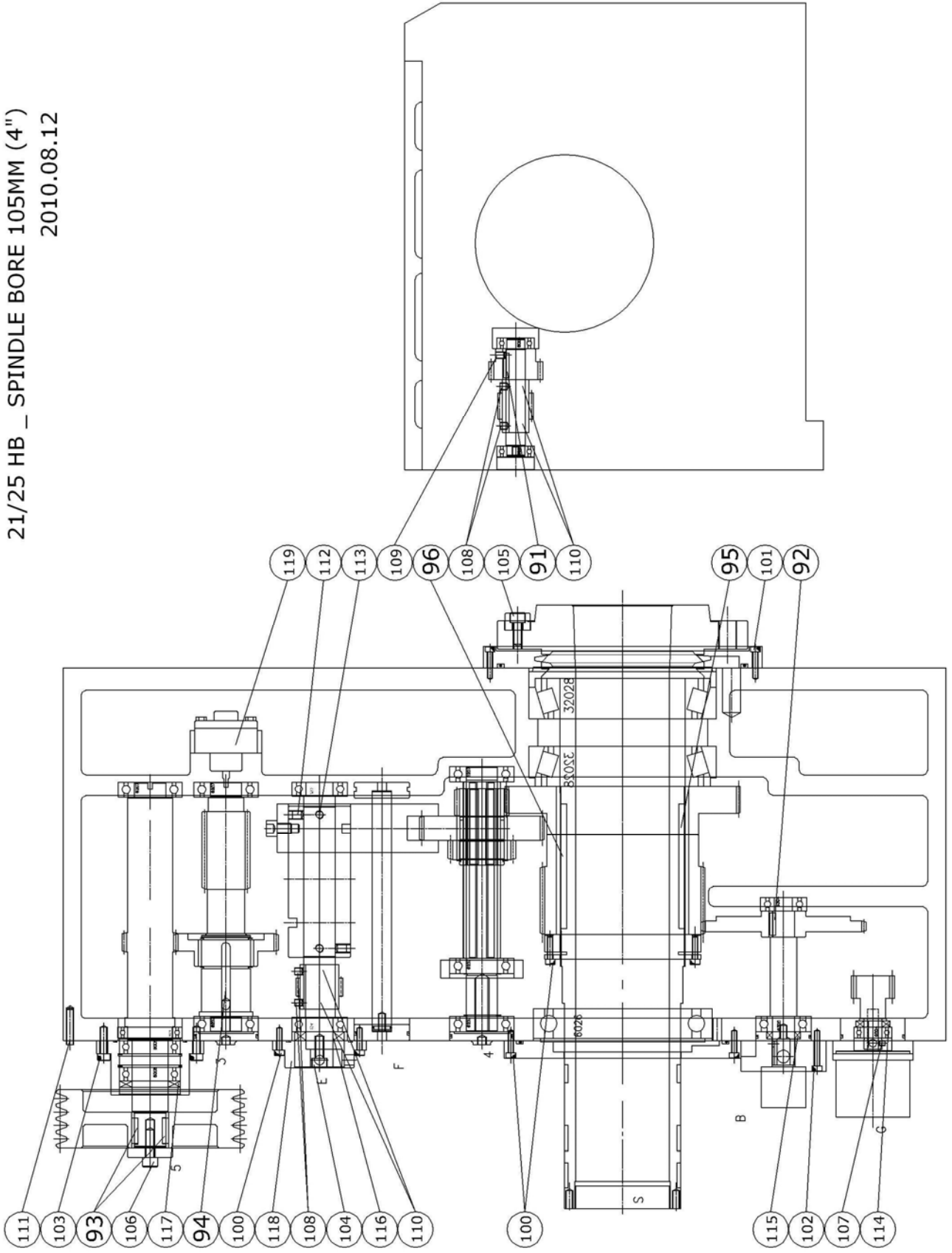


Parts list of 21/25 Headstock, Spindle bore 105mm (4")

Date : 2010-08-12

No.	PARTS NO.	DESCRIPTION	Q'TY	NOTE
46	25HB-422000	Cam	1	
47	25HB-423000	Speed Change Fork	1	
50	25HB-424000	Shaft	1	
50-1	18HB-024100	Stuff	1	
51	18HB-025000	Worm Gear	1	
52	18HB-026000	Bevel Gear	1	
53	18HB-020000	Measuring Post	1	
54	18HB-019000	Block	1	
55	18HB-015000	Cover	1	
56	18HB-028001	Cover	1	
57	18HB-027000	Worm Gear	1	
58	18HB-048000	Screw	1	
60	25HA-483000	Fixed Block	1	
70	Bearing	6004	3	
71	Bearing	6008	2	
72	Bearing	6026	1	
73	Bearing	6206	2	
74	Bearing	6207	6	
75	Bearing	6304	1	
76	Bearing	6305	1	
77	Bearing	6910	1	
78	Tapered Roller Bearing	32028	2	
80	O-Ring	G55	2	
81	O-Ring	G65	4	
82	O-Ring	G75	1	
83	O-Ring	P18	1	
84	O-Ring		1	
85	O-Ring		1	
86	C-Locker	R68	2	
87	C-Locker	S20	1	
88	C-Locker	S35	2	
89	C-Locker	S55	2	

21/25 HB _ SPINDLE BORE 105MM (4")
2010.08.12



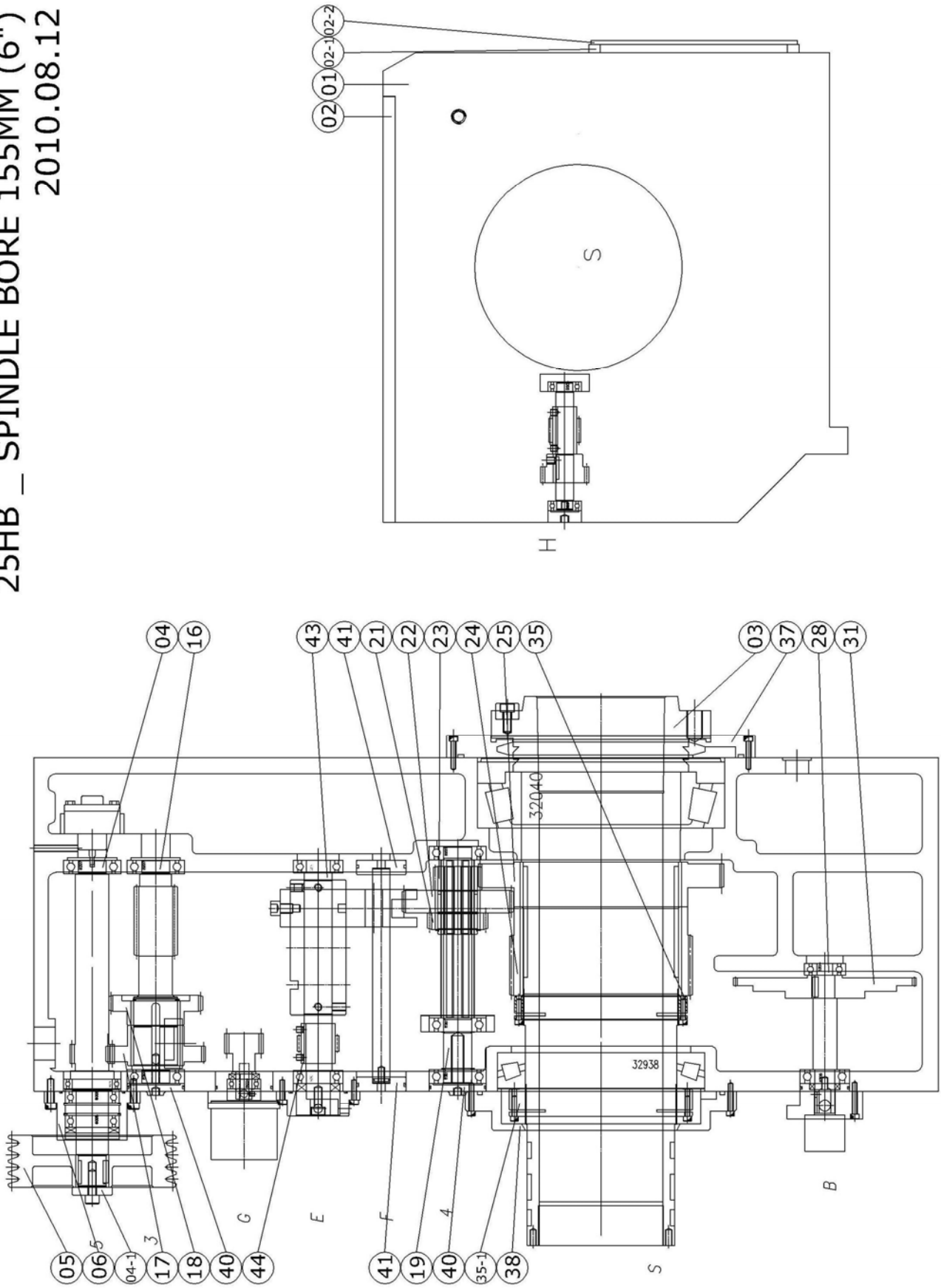
Parts list of 21/25 Headstock, Spindle bore 105mm (4'')

Date : 2010-08-12

No.	PARTS NO.	DESCRIPTION	Q'TY	NOTE
91	Key	6*6*28	1	
92	Key	8*7*25	1	
93	Key	8*7*28	2	
94	Key	10*8*25	2	
95	key	18*11*60	2	
96	Key	18*11*80	2	
100	Cap Screw	M6*25	12	
101	Cap Screw	M6*30	6	
102	Cap Screw	M6*40	3	
103	Cap Screw	M8*30	4	
104	Cap Screw	M10*20	1	
105	Cap Screw	M10*25	1	
106	Cap Screw	M10*30	1	
107	Set Screw	M6*6	1	
108	Set Screw	M8*8	4	
109	Set Screw	M8*10	1	
110	Set Screw	M8*18	4	
111	Set Screw	M8*40	1	
112	Set Screw	M10*10	4	
113	Set Screw	M10*16	2	
114	Oil Seal	20*38*7	1	
115	Oil Seal	25*38*8	1	
116	Oil Seal	30*55*10	1	
117	Oil Seal	40*68*7	1	
118	Sensor		3	
119	Oil Pump		1	

8.1.4 21/25 HB, SPINDLE BORE 155MM (6") OPTION

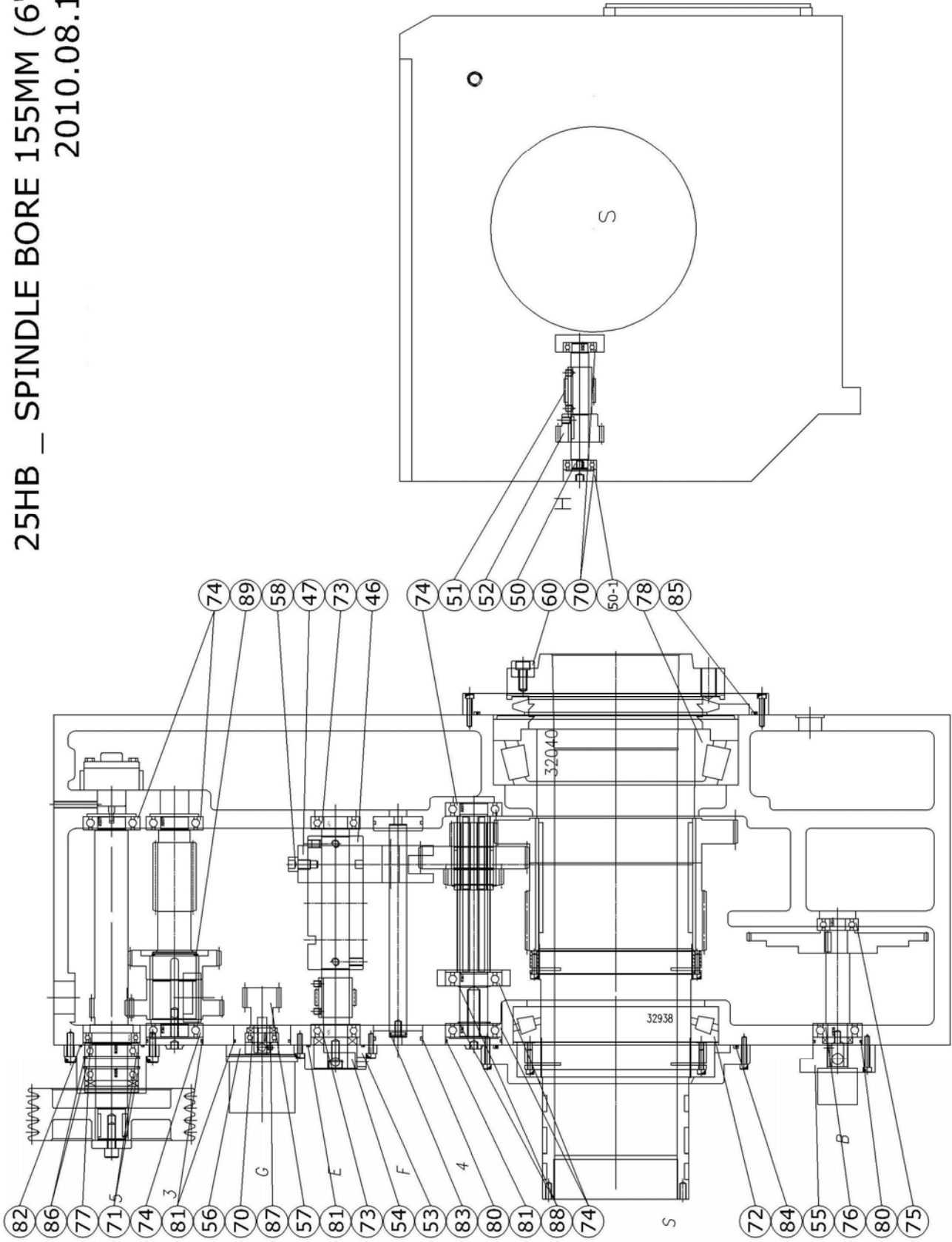
25HB _ SPINDLE BORE 155MM (6")
2010.08.12



Parts list of 25 Headstock, Spindle bore 155mm (6")**Date : 2010-08-12**

No.	PARTS NO.	DESCRIPTION	Q'TY	NOTE
1	25HB-601000	Headstock	1	Opt.
2	25HA-602000	Cover	1	
2-1	25HA-602100	Cover	1	
2-2	25HA-602200	Cover	1	
3	25HA-6030A0	Spindle	1	
4	25HC-6041A0	Tooth Shaft	1	
4-1	18HA-004100	Washer	1	
5	18HA-0051A0	V-Pulley	1	
6	18HA-006A00	Cover	1	
16	18HA-016000	Tooth Shaft	1	
17	25HC-617000	Gear	1	
18	18HA-018000	Gear	1	
19	25HA-419000	Spline Shaft	1	
21	25HA-421000	Gear	1	
22	25HA-422000	Gear	1	
23	25HA-423000	Gear	1	
24	25HA-624000	Gear	1	
25	25HA-625000	Gear	1	
28	18HB-014100	Shaft	1	Opt.
	18HB-014200	Shaft	1	Opt.
	18HB-014500	Shaft	1	Opt.
31	25HB-631000	Gear	1	
35	25HA-635000	Clocker Nut	1	
35-1	25HA-635100	Clocker Nut	1	
37	25HA-6370A1	Cover	1	
38	25HA-638000	Cover	1	
40	18HA-040000	Cover	2	
41	18HA-041000	Cover	2	
43	18HB-017000	Shaft	1	
44	18HB-021000	Bevel Gear	1	

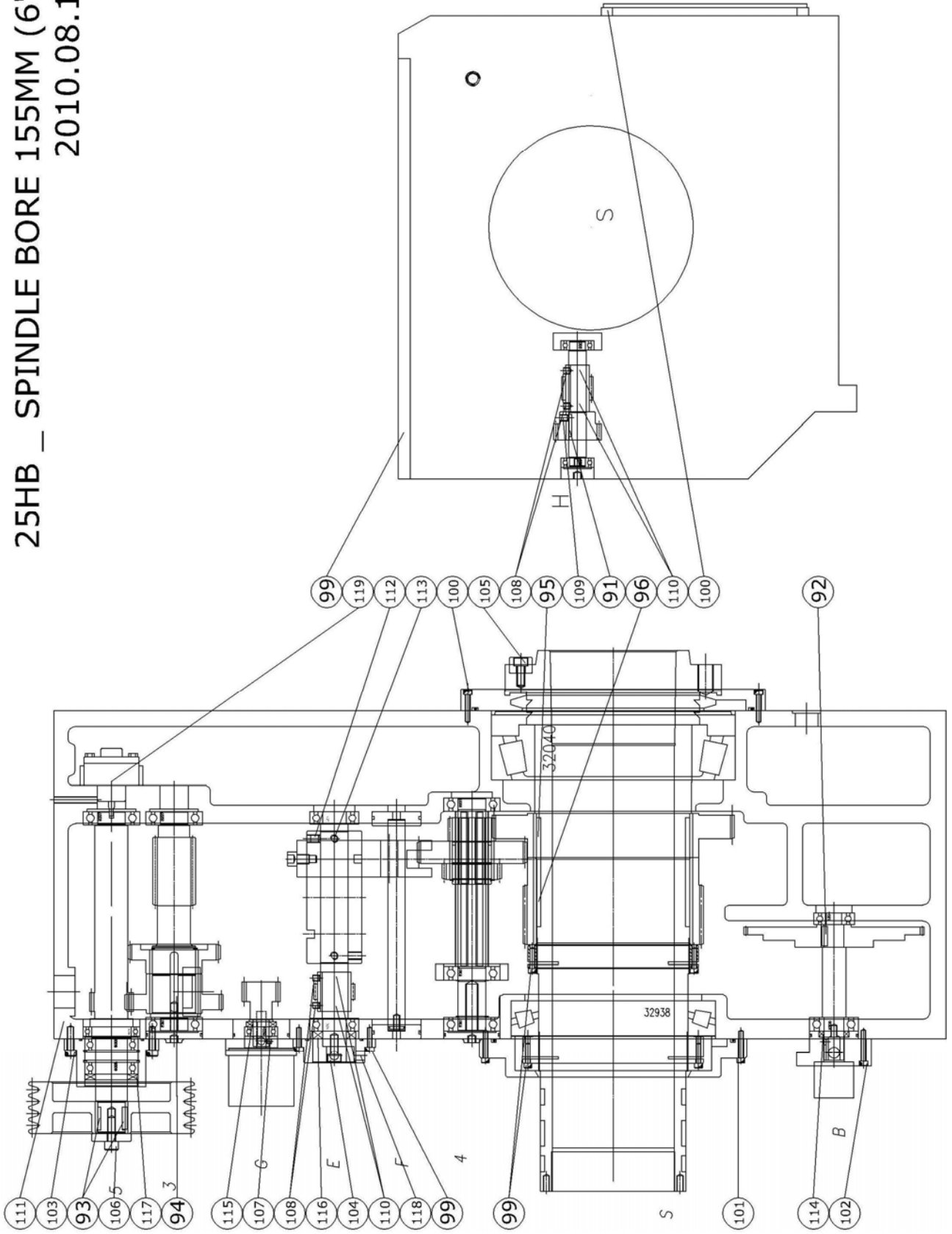
25HB _ SPINDLE BORE 155MM (6")
2010.08.12



Parts list of 25 Headstock, Spindle bore 155mm (6")**Date : 2010-08-12**

No.	PARTS NO.	DESCRIPTION	Q'TY	NOTE
46	25HB-422000	Cam	1	
47	25HB-423000	Speed Change Fork	1	
50	25HB-624000	Shaft	1	
50-1	18HB-024100	Stuff	1	
51	18HB-025000	Worm Gear	1	
52	18HB-026000	Bevel Gear	1	
53	18HB-020000	Measuring Post	1	
54	18HB-019000	Block	1	
55	18HB-015000	Cover	1	
56	18HB-028001	Cover	1	
57	18HB-027000	Worm Gear	1	
58	18HB-048000	Screw	1	
60	25HA-483000	Fixed Block	1	
70	Bearing	6004	3	
71	Bearing	6008	2	
72	Tapered Roller Bearing	32938	1	
73	Bearing	6206	2	
74	Bearing	6207	6	
75	Bearing	6304	1	
76	Bearing	6305	1	
77	Bearing	6910	1	
78	Tapered Roller Bearing	32040	1	
80	O-Ring	G55	2	
81	O-Ring	G65	4	
82	O-Ring	G75	1	
83	O-Ring	P18	1	
84	O-Ring		1	
85	O-Ring		1	
86	C-Locker	R68	2	
87	C-Locker	S20	1	
88	C-Locker	S35	2	
89	C-Locker	S55	1	

25HB _ SPINDLE BORE 155MM (6")
2010.08.12

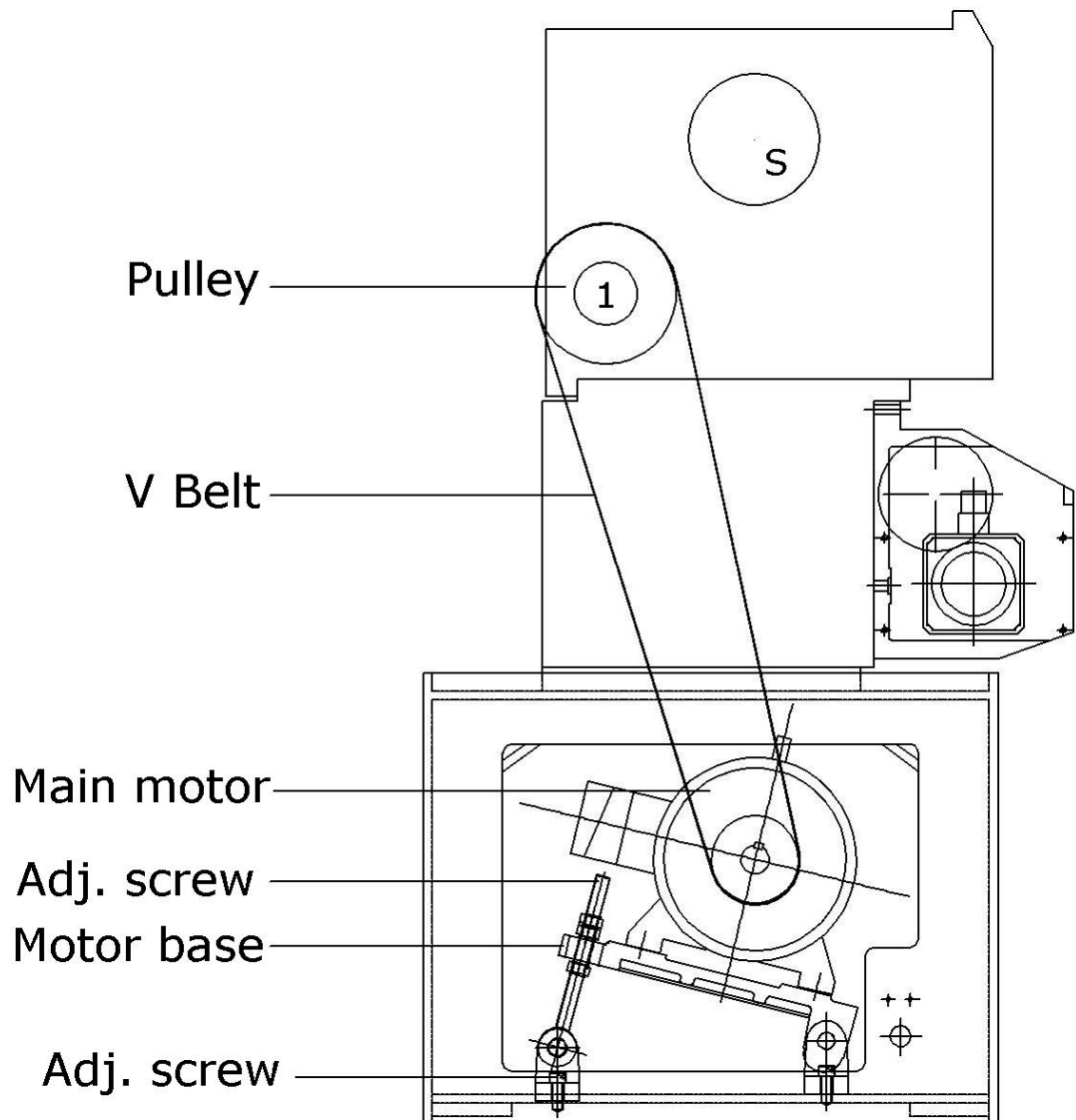


Parts list of 25 Headstock, Spindle bore 155mm (6")

Date : 2010-08-12

No.	PARTS NO.	DESCRIPTION	Q'TY	NOTE
91	Key	6*6*28	1	
92	Key	8*7*25	1	
93	Key	8*7*28	2	
94	Key	10*8*25	2	
95	key	18*11*60	2	
96	Key	18*11*70	2	
99	Cap Screw	M6*25	15	
100	Cap Screw	M6*30	18	
101	Cap Screw	M6*35	8	
102	Cap Screw	M6*40	3	
103	Cap Screw	M8*30	4	
104	Cap Screw	M10*20	1	
105	Cap Screw	M10*25	1	
106	Cap Screw	M10*30	1	
107	Set Screw	M6*6	1	
108	Set Screw	M8*8	4	
109	Set Screw	M8*10	1	
110	Set Screw	M8*18	4	
111	Set Screw	M8*40	1	
112	Set Screw	M10*10	4	
113	Set Screw	M10*16	2	
114	Oil Seal	20*38*7	1	
115	Oil Seal	25*38*8	1	
116	Oil Seal	30*55*10	1	
117	Oil Seal	40*68*7	1	
118	Sensor		3	
119	Oil Pump		1	

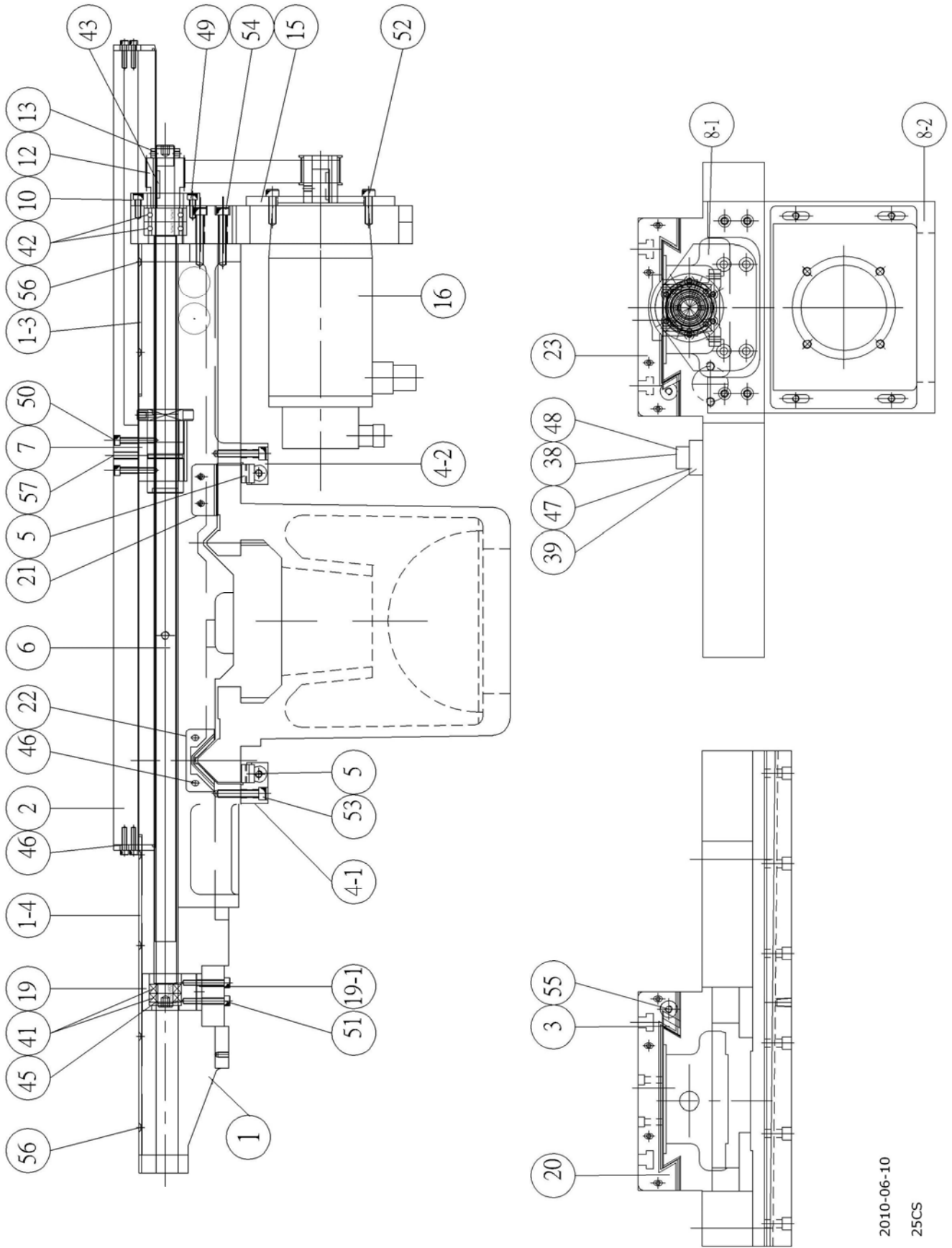
8.2 MAIN SPINDLE TRANSMISSION



Parts list of main spindle trans.

No.	PARTS NO.	DESCRIPTION	Q'TY	NOTE
1		Pulley	1	
2		V belt	4	
3		Motor	1	
4		ADJ. screw	1	
5		Motor Base	1	
6		ADJ. screw	1	

8.3 CARRIAGE & CROSS SLIDE



Parts list of Carriage & Cross slide

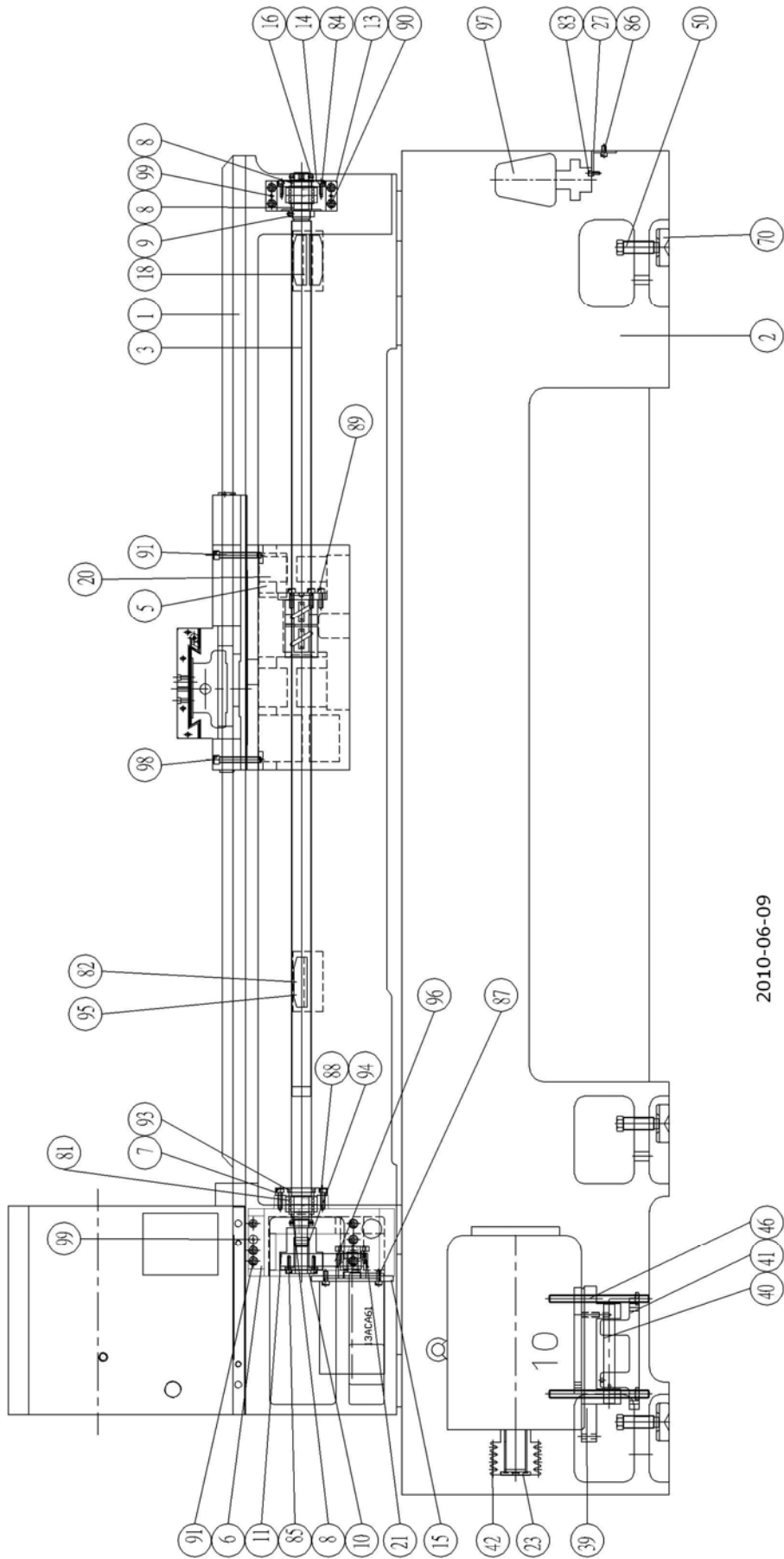
Date : 2010-06-10

No.	PARTS NO.	DESCRIPTION	Q'TY	NOTE
001	25CS-001000	Carriage	1	
001-3	25CS-001300	Cover	1	
001-4	25CS-001400	Cover	1	
002	25CS-002100	Cross Slide	1	
003	25CS-003000	Gib	1	
004-1	25CS-004100	Gib Plate(Front)	1	
004-2	25CS-004200	Gib Plate(Back)	1	
005	25CS-005000	Gib	2	
006	25CS-006A00	Ball Screw	1	x-axis
007	25CS-007000	Bracket	1	
008-1	25CS-008100	Transmitting Block	1	
008-2	25CS-008200	Transmitting Block	1	
010	25CS-010000	Brg. Cover	1	
012	25CS-012100	Pulley	1	
013	25CS-013000	Lock Nut	1	
015	25CS-015100	Motor plate	1	
016		Motor	1	
019	25CS-019000	Bearing Block	1	
019-1	25CS-019100	Washer	1	
020	25CS-020000	Wiper	1	
021	25S-029000	Wiper	2	
022	25S-027000	Wiper	2	
023	25CS-023000	Wiper	1	
035	21CS-035100	Turret Base	1	
038		Limit switch - double connection	1	
039		Limit switch - single connection	1	
041		Bearing 6003	2	
042		Bearing 2047	2	
043		Key 7*7*28	1	
045		C-Locker S17	1	
046		Half-Screw M5*20	16	
047		Screw M5*30	2	
048		Screw M5*45	2	
049		Screw M6*20	6	
050		Screw M6*40	4	

Parts list of Carriage & Cross slide**Date : 2010-06-10**

No.	PARTS NO.	DESCRIPTION	Q'TY	NOTE
051		Screw M6*45	4	
052		Screw M8*30	4	
053		Screw M8*35	12	
054		Screw M8*55	4	
055	25S-024100	Adj. screw	2	
056		Flat head Screw M4*10	12	
057		Pin dia.5*45	2	

8.4 BED & Z-AXIS TRANSMISSION



Parts list of Bed & Z-axis Transmission**Date : 2010-06-09**

No.	PARTS NO.	DESCRIPTION	Q'TY	NOTE
001	25B-001B00	Bed	1	
002	25B-002B00	Stand	1	
003	25CB-003	Ball Screw	1	Z Axis
005	25CB-005000	Bracket	1	
006	25CB-006000	Motor Bracket	1	
007	25CB-007000	Brg. Cover	1	
008	25CB-008000	Collar	3	
009	25CB-009000	Lock Nut	1	
010	25CB-010000	Snap Cover	1	
011	25CB-011200	Puelly	1	
013	25CB-013000	Brg. Housing	1	
014	25CB-014000	Brg. Cover	1	
015	25CS-015200	Base	1	
016	25CB-016000	Lock Nut	2	
018	25CB-018000	Sensorial chunk	3	
020	25CB-020000	Base	1	
021	25CB-021300	Puelly	1	
023	25B-023000	Washer	1	
027	25B-027000	Pump Frame	1	
039	25B-039000	Motor Base	1	
040	25B-040000	Shaft	1	
041	25B-041000	Base Plate	1	
042	25B-042300	Motor Pulley	1	
046	25B-046000	Adjust Screw	1	
050	25B-050000	Screw	6	
070	25B-070000	Gasket	6	
081		Bearing 3062	4	
082		Half-Screw M5*10	6	
083		Screw M6*16	2	
084		Screw M6*20	6	
085		Screw M6*25	6	
086		Screw M8*14	2	
087		Screw M8*20	4	
088		Screw M8*25	4	
089		Screw M8*30	5	
090		Screw M10*35	4	

Parts list of Bed & Z-axis Transmission**Date : 2010-06-09**

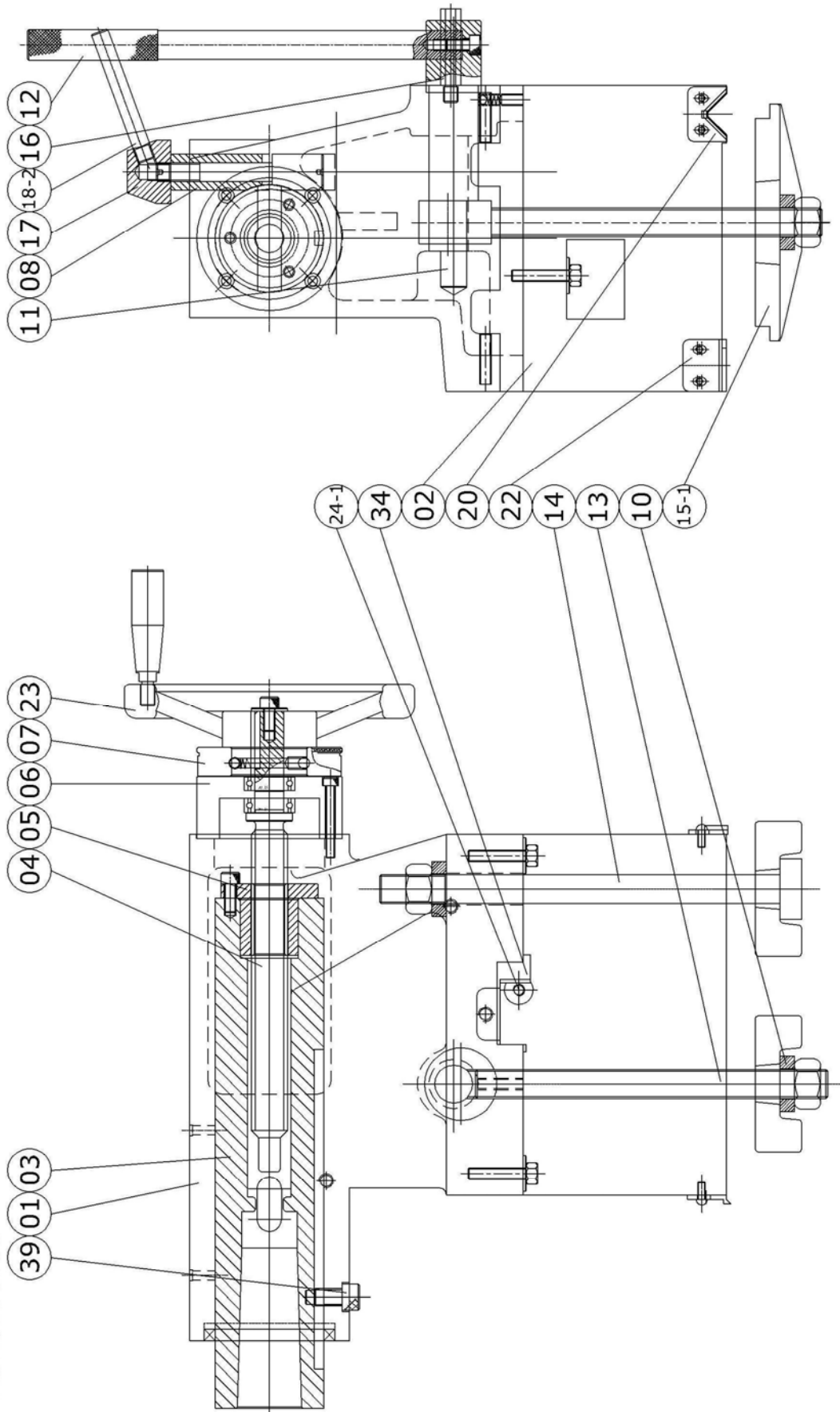
No.	PARTS NO.	DESCRIPTION	Q'TY	NOTE
091		Screw M10*50	6	

092		Screw M12*75	4	
093		Oil Seal 40*55*8	1	
094		Packing Ring 30*25	3	
095		Spacer M5	6	
096		Belt	1	
097		Pump	1	

8.5 TAILSTOCK

8.5.1 MANUAL TAILSTOCK _ 18/21/25T

TAILSTOCK
2010.08.03

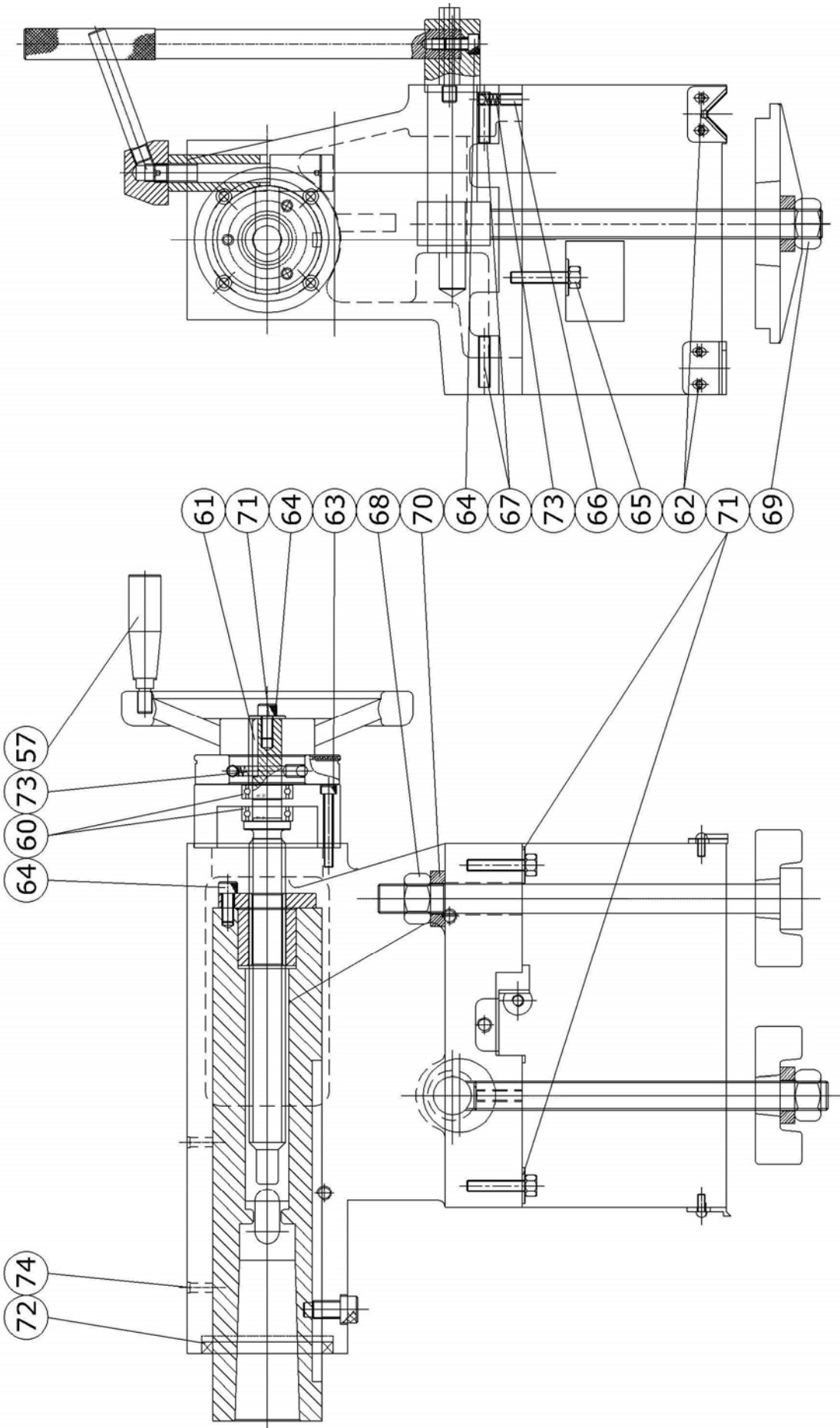


Parts list of 18/21/25 Manual Tailstock

Date : 2010-08-03

No.	PARTS NO.	DESCRIPTION	Q'TY	NOTE
001	25T-001000	TAILSTOCK BODY	1	H4 TURRET
	25CT-001000	TAILSTOCK BODY	1	V8 TURRET
002	18T-002000	BASE	1	
	21T-002000	BASE	1	
	25T-002000	BASE	1	
003	25T-003000	QUILL	1	
	25T-0040M0	SCREW	1	MM
004	25T-0040I0	SCREW	1	INCH
	25CT-0040M0	SCREW	1	FOR 25CT-001
	25CT-0040I0	SCREW	1	FOR 25CT-001
005	25T-0050M0	NUT	1	MM
	25T-0050I0	NUT	1	INCH
006	25T-006000	BRACKET	1	
007	25T-0070M0	DIAL	1	MM
	25T-0070I0	DIAL	1	INCH
008	25T-008009B	NIPPING STUD	1	
010	25T-010000	WASHER	1	
011	25T-011000	ECCENTRIC LOCK STUD	1	
012	25T-012000	LOCKING LEVER	1	
013	18T-013000	CLAMPING BOLT	1	
	21T-013000	CLAMPING BOLT	1	
	25T-013000	CLAMPING BOLT	1	
014	18T-014000	CLAMPING BOLT	1	
	21T-014000	CLAMPING BOLT	1	
	25T-014000	CLAMPING BOLT	1	
015-1	25T-015100	HOLDING DOWN PLATE	2	
016	25T-016000	STOP PIN	1	
017	25T-017000	NIPPING NUT	1	
018-2	25T-018200	HANDLE	1	
020	25T-020000	WIPER	2	
022	25T-022000	WIPER	2	
023	25A-010000	HAND WHEEL	1	
024-1	25S-024100	ADJUSTMENT BOLTS	2	
034	25T-034000	GIB	1	
039	25T-039000	FIXING SCREW	1	

TAILSTOCK
2010.08.03

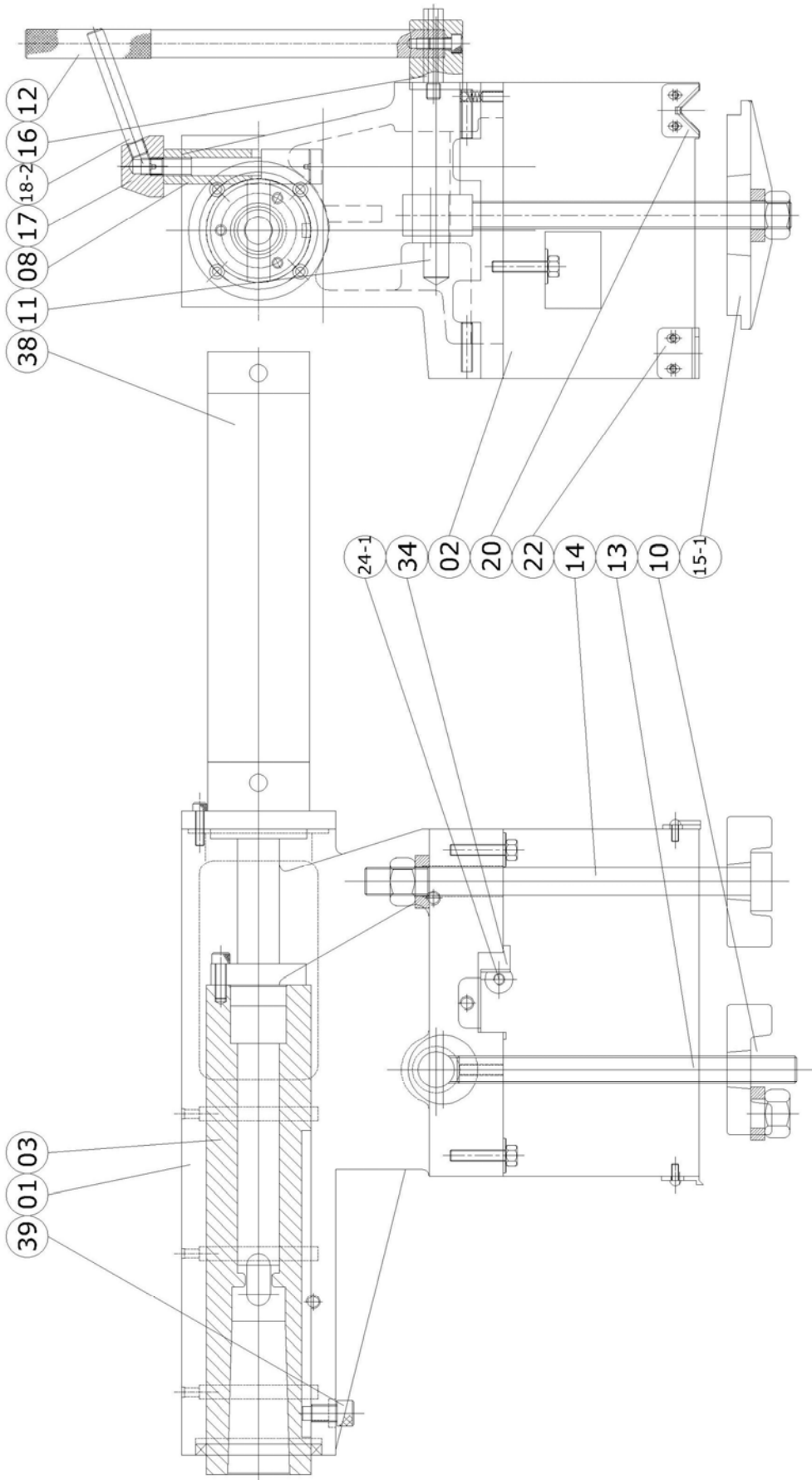


Parts list of 18/21/25 Manual Tailstock**Date : 2010-08-03**

NO.	PARTS NO.	DESCRIPTION	Q'TY	NOTE
057	25T-057000	HANDLE	1	
060		BEARING 51104	2	
061		KEY 6*6*14	1	
062		SCREW M5*12	4	
063		SCREW M6*50	4	
064		SCREW M8*20	5	
065		SCREW M8*40	2	
066		SCREW M6*16	1	
067		SCREW M8*35	2	
068		NUT 3/8"	1	
069		NUT M20	1	
070		SPACER 20*37*4	1	
071		SPACER M8	3	
072		OIL SEAL 75*90*8	1	
073		STEEL BALL & SPRING	2	
074		OIL STUFF	2	
		OIL STUFF	3	FOR 25CT-001

8.5.2 HYDRAULIC TAILSTOCK _ 18/21/25T OPTION

HYD. TAILSTOCK
2010.08.21



Parts list of 18/21/25 hydraulic Tailstock

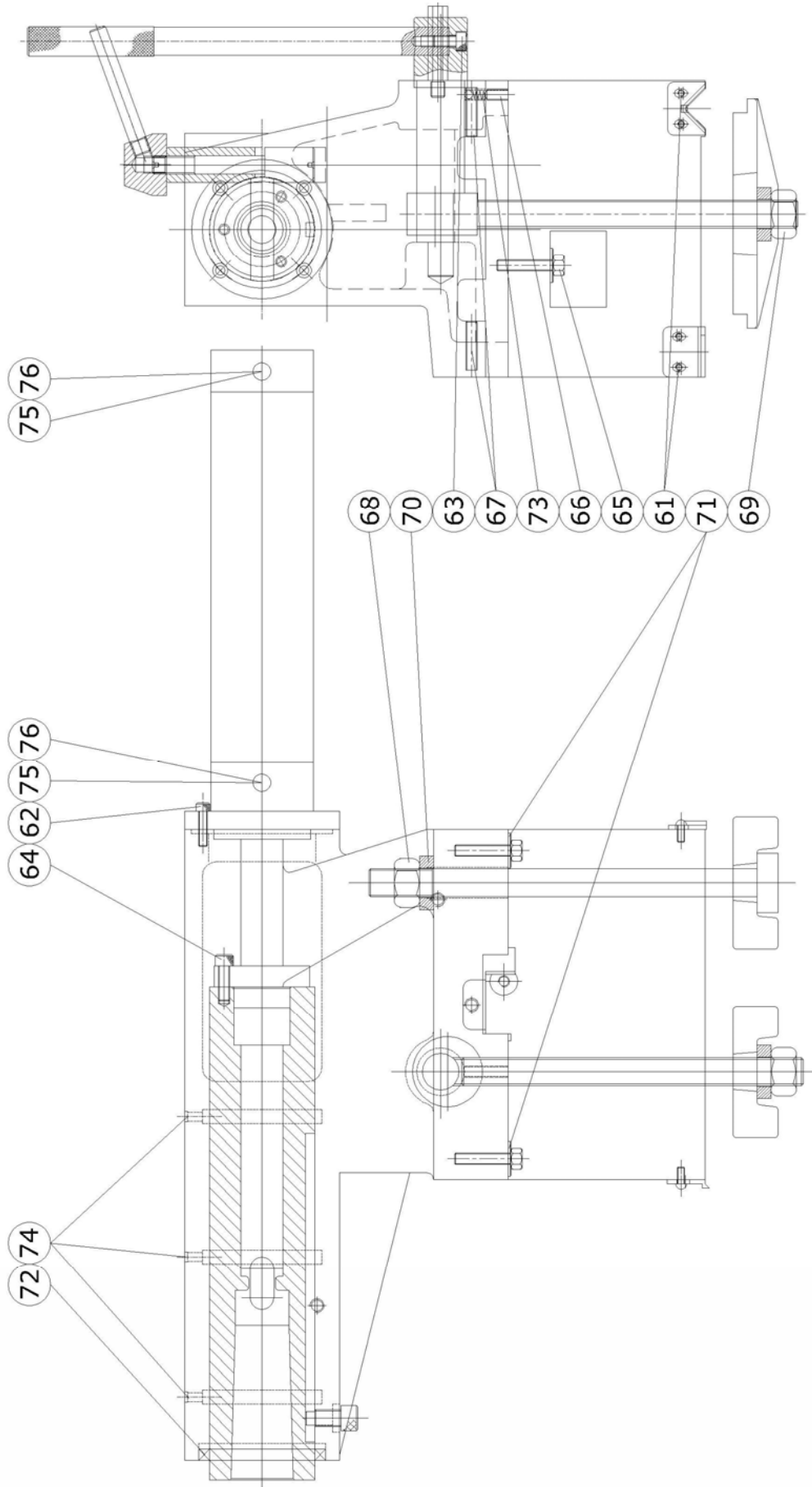
Date : 2010-08-21

OPTION

NO.	PARTS NO.	DESCRIPTION	Q'TY	NOTE
001	25CT-001000	TAILSTOCK BODY	1	
002	18T-002000	BASE	1	
	21T-002000	BASE	1	
	25T-002000	BASE	1	
003	25T-003000	QUILL	1	
008	25T-008009B	NIPPING STUD	1	
010	25T-010000	WASHER	1	
011	25T-011000	ECCENTRIC LOCK STUD	1	
012	25T-012000	LOCKING LEVER	1	
013	18T-013000	CLAMPING BOLT	1	
	21T-013000	CLAMPING BOLT	1	
	25T-013000	CLAMPING BOLT	1	
014	18T-014000	CLAMPING BOLT	1	
	21T-014000	CLAMPING BOLT	1	
	25T-014000	CLAMPING BOLT	1	
015-1	25T-015100	HOLDING DOWN PLATE	2	
016	25T-016000	STOP PIN	1	
017	25T-017000	NIPPING NUT	1	
018-2	25T-018200	HANDLE	1	
020	25T-020000	WIPER	2	
022	25T-022000	WIPER	2	
024-1	25S-024100	ADJUSTMENT BOLTS	2	
034	25T-034000	GIB	1	
038	25CT-038000	HYD. CYLINDER	1	
039	25T-039000	FIXING SCREW	1	

Hydraulic Tailstock _ 18/21/25T **OPTION**

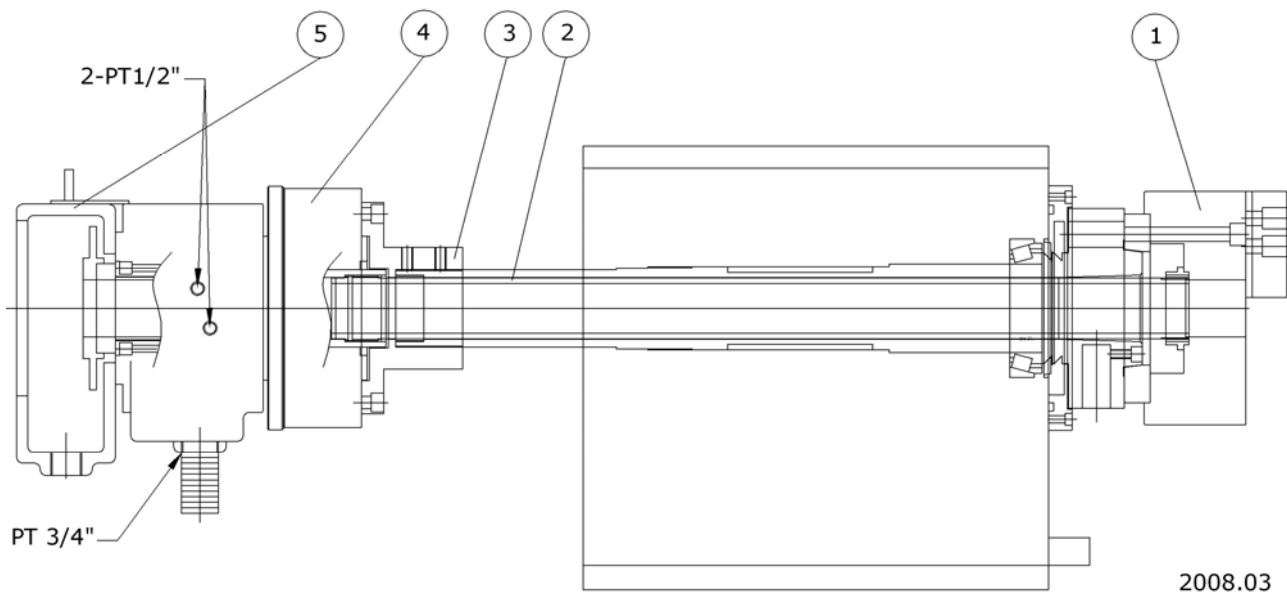
HYD. TAILSTOCK
2010.08.21



Parts list of 18/21/25 hydraulic Tailstock**Date : 2010-08-21****OPTION**

NO.	PARTS NO.	DESCRIPTION	Q'TY	NOTE
061		SCREW M5*12	8	
062		SCREW M6*25	4	
063		SCREW M8*20	1	
064		SCREW M8*25	3	
066		SCREW M6*16	1	
067		SCREW M8*35	2	
068		NUT 3/8"	1	
069		NUT M20	1	
070		SPACER 20*37*4	1	
071		SPACER M8	2	
072		OIL SEAL 75*90*8	1	
073		STEEL BALL & SPRING	2	
074		OIL STUFF	3	
075		CONNECTION 3/8T*3/8H	2	
076		CONNECTION 3/8T*3/8H	2	90°

8.6 HYDRAULIC CYLINDER FOR HYD. CHUCK- OPTION

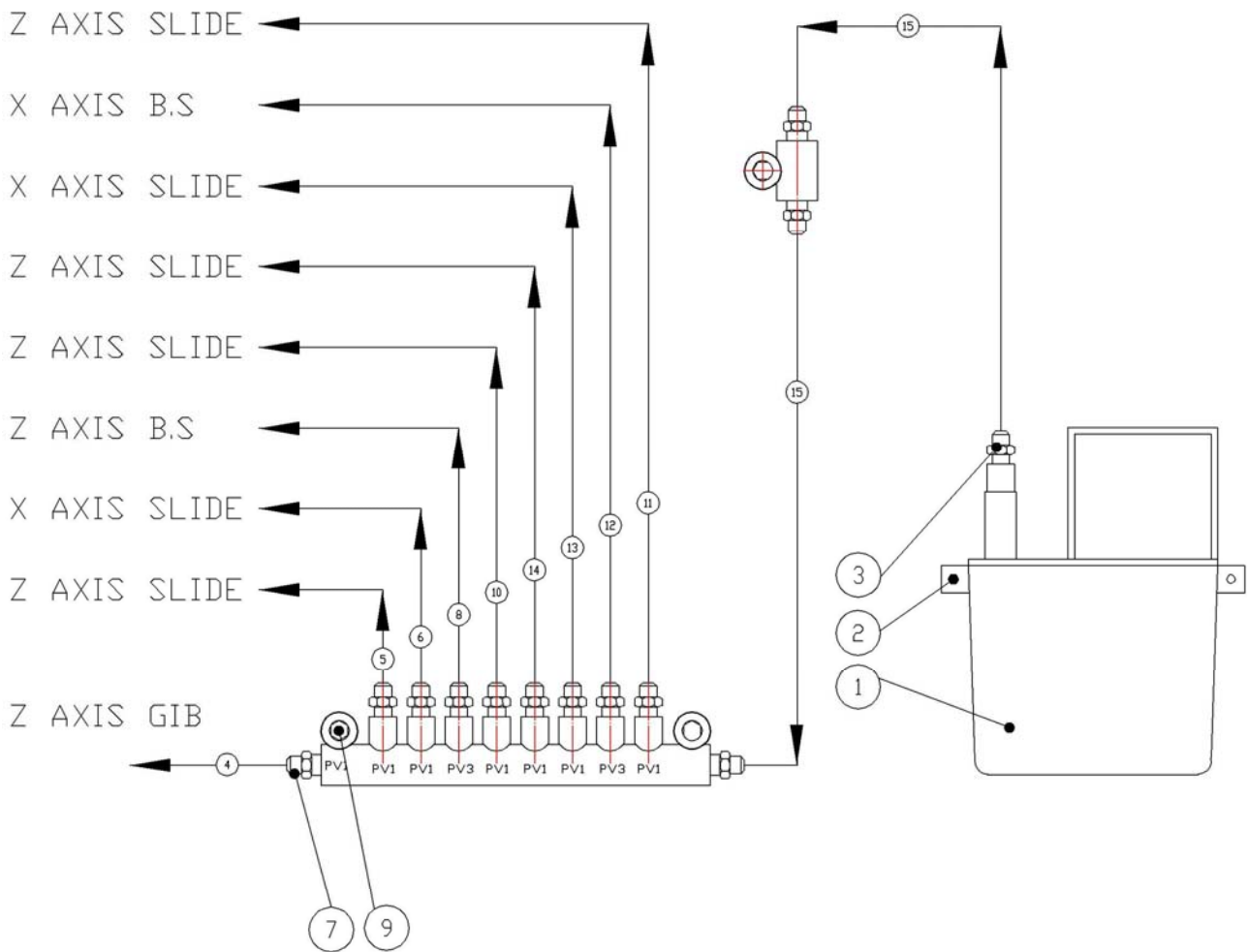


2008.03

Parts list of hydraulic cylinder for hyd. Chuck

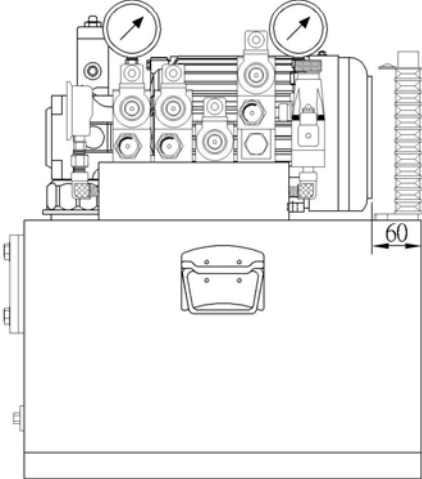
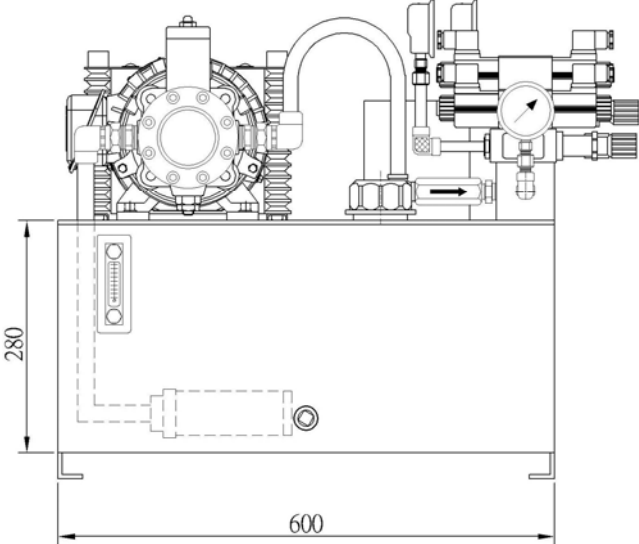
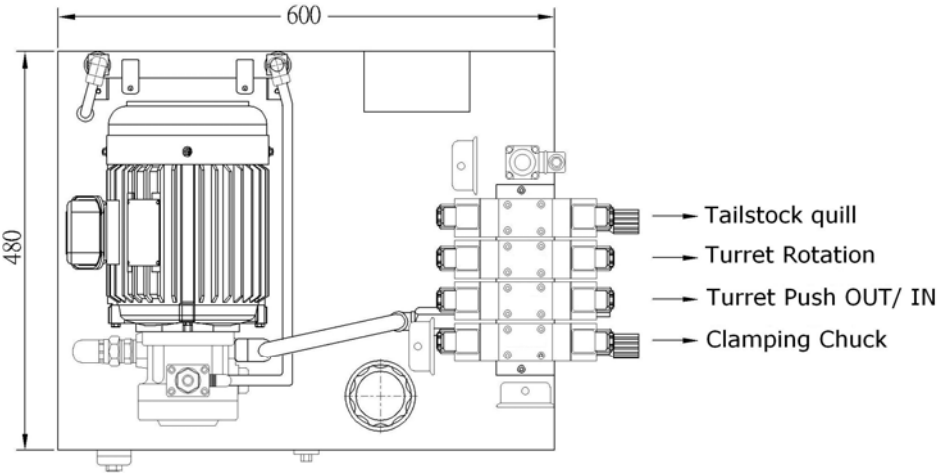
NO.	PARTS NO.	DESCRIPTION	Q'TY	NOTE
1		Chuck	1	
2		Draw Bar	1	
3		Bracket	1	
4		Hydraulic Cylinder	1	
5		Back cover	1	

8.7 LUBRICATION SYSTEM



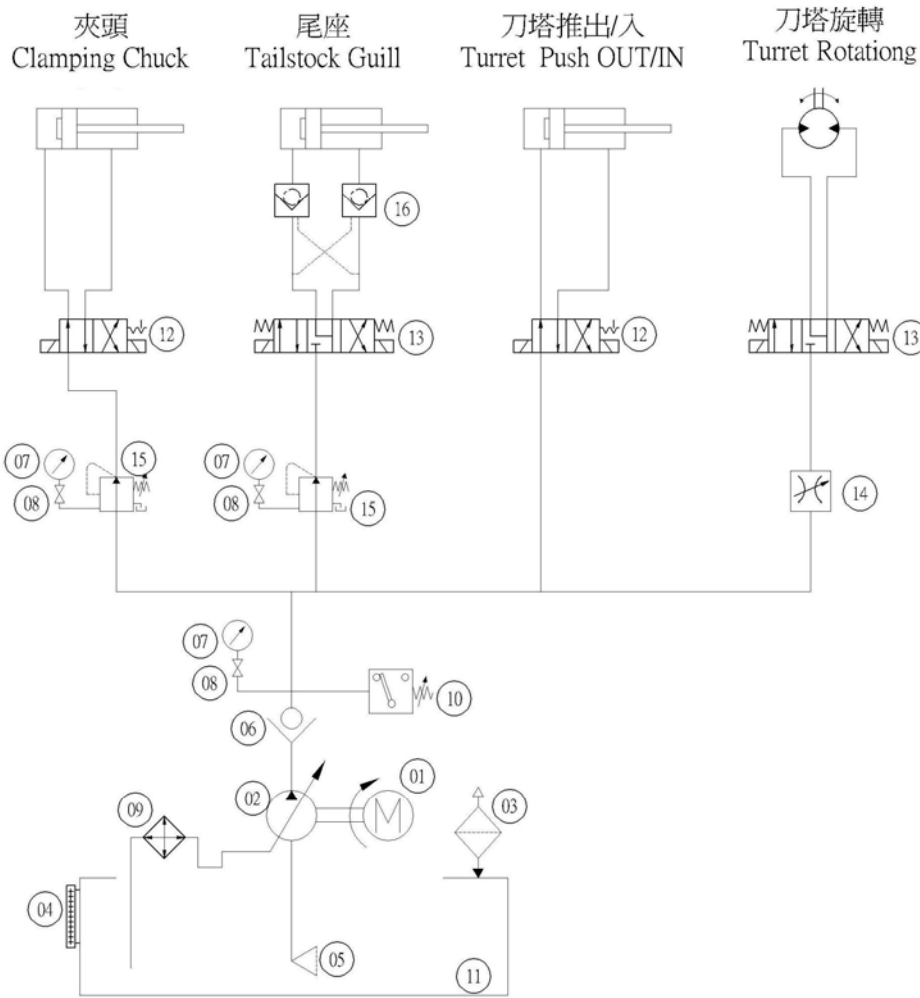
NO	PART NO	PART NAME	QTY	REMARK
1		LUB. PUMP	1	
2		SOCKET HD. SCREW	2	
3		PIPE LOCK NUT	1	
4		ALUMINUN PIPE Ø4		
5		ALUMINUN PIPE Ø4		
6		ALUMINUN PIPE Ø4		
7		PIPE LOCK NUT PIPE JOINT		
8		ALUMINUN PIPE Ø4	1	
9		SOCKET HD. SCREW	2	
10		ALUMINUN PIPE Ø4		
11		ALUMINUN PIPE Ø4		
12		ALUMINUN PIPE Ø4	1	
13		ALUMINUN PIPE Ø4		
14		ALUMINUN PIPE Ø4		
15		ALUMINUN PIPE Ø6		

8.8 HYDRAULIC UNIT OPTION



2010.08

HYDRAULIC CIRCUIT DIAGRAM



NO	Item	Qty
1	Motor	1
2	Pump	1
3	Filler breather filter	1
4	fluid level	1
5	Sunction filter	1
6	Check valve	1
7	Pressure gauges	3
8	Joint	3
9	Heat exchangers	1
10	Pressure switch	1
11	tank	1
12	Solenoid valve	2
13	Solenoid valve	2
14	Flow control valve	1
15	Pressure relief valves	2
16	check valve	1
17		
18		

1037-024
2010.08

8.9 AUXILIARY COOLANT TANK OPTION

