

# OPERATING MANUAL

HEALTH AND SAFETY  
GUIDANCE NOTES  
MODEL: B5AC



DATE: 2002/04/03

VERSION: 1.2

<b>1. Safety regulations</b>	<b>1-1</b>
1.1 General safety rules	1-1
1.1.1 Operating safety precautions	1-1
1.1.2 Safety for tool use	1-2
1.1.3 Machine operator's precautions	1-2
1.1.4 Environmental safety	1-3
1.2 Danger areas of machine	1-4
1.3 All safety related elements	1-5
1.4 Warning label's, contents and locations	1-6
1.4 Warning label's, contents and locations	1-7
<b>2. Description of the machine</b>	<b>2-1</b>
2.1 General description	2-1
2.2 Out looking, main units, and operator's position	2-1
2.2.1 Names of machine parts	2-1
2.2.2 Operator's position	2-2
2.2.3 Noise level	2-2
2.2.4 Spindle nose detail	2-2
2.3 Machine specifications	2-3
2.3.1 Specification	2-3
2.3.2 Constraints on materials	2-4
2.3.3 Working space required	2-4
2.3.4 Requirements of operators and servicemen	2-4
2.3.5 Requirements of circumstance	2-4
2.4 Magazine system	2-5
<b>3. Preparation for installation</b>	<b>3-1</b>
3.1 Requirements of foundation	3-1
3.2 Requirements of power supply	3-2
<b>4. Transportation and installation</b>	<b>4-1</b>
4.1 Shipping chest	4-1
4.2 Notices for transportation	4-1
4.3 Notices for open the shipping chest	4-2
4.4 Requirements of transportation equipment	4-2
4.4.1 Methods of transport	4-2

4.4.2 Cautions for unpacking	4-4
4.5 Notices for installation	4-4
4.5.1 Work environment	4-4
4.5.2 Power supply installation	4-4
4.5.3 Leveling adjustment	4-5
<b>5. Preparation for trail runs</b>	<b>5-1</b>
5.1 Cleaning	5-1
5.2 Visible inspection	5-1
5.3 Fluids	5-1
5.4 Pneumatic piping	5-1
5.5 Electrical earthing system	5-1
5.6 Trial run	5-2
<b>6. Operation and function instructions</b>	<b>6-1</b>
<b>7. Lubrication , Air pressure and coolant</b>	<b>7-1</b>
7.1 Spindle	7-1
7.2 Lubrication tank and pipe drawing	7-1
7.3 Pneumatic power system	7-2
7.4 Adjustment is air pressure	7-2
7.5 Coolant replacement	7-3
<b>8. Adjustment</b>	<b>8-1</b>
8.1 Adjustment of work table gibs	8-1
8.2 Adjustment of saddle gib	8-1
8.3 Adjustment of elevating gib	8-2
<b>9. Service and maintenance</b>	<b>9-1</b>
9.1 Belt maintenance	9-1
9.2 Air pressure system maintenance	9-1
9.3 Lubricant system maintenance	9-1
9.4 Cutting coolant system maintenance	9-1
9.5 Electricity maintenance	9-1
9.6 Maintenance measures for critical safety devices	9-2

9.7 Cleaning for chip	9-2
<b>10. Self service and dismantling</b>	<b>10-1</b>
10.1 Maintenance precaution	10-1
10.2 Safety confirmation	10-1
10.3 Requirements of replacement	10-1
10.4 Simply maintaining and dismantling each main parts unit	10-1
10.4.1 Spindle belt exchanging	10-1
10.4.1 Coolant pump exchanging	10-2
10.5 Inspection and maintenance period list	10-2
10.5.1 Inspection	10-2
10.5.2 Maintenance	10-2
<b>11. Troubles and trouble shooting</b>	<b>11-1</b>
11.1 X-axis, Y-axis and Z-axis	11-1
11.2 Coolant system	11-1
11.3 Lubricant system	11-1
11.4 Electricity	11-1
<b>12.Parts list</b>	<b>12-1</b>
12.1 Spindle assembly	12-1
12.1.1 Spindle assembly drawing	12-1
12.1.2 Spindle assembly parts list	12-2
12.2 Column, base assembly	12-3
12.2.1 Column, Base assembly drawing	12-3
12.2.2 Column, Base assembly parts list	12-4
12.3 Head stock assembly	12-5
12.3.1 Head stock assembly drawing	12-5
12.3.2 Head stock assembly parts list	12-6
12.4 Table, saddle assembly	12-7
12.4.2 Table, saddle assembly drawing	12-7
12.4.2 Table, saddle assembly parts list	12-8
12.5 X, Y axis assembly	12-9
12.5.2 X, Y axis assembly drawing	12-9

12.5.2 X, Y axis assembly parts list	12-10
12.6 Z axis assembly	12-11
12.6.1 Z axis assembly drawing	12-11
12.6.2 Z axis assembly parts list	12-12
12.7 Lubrication, coolant assembly	12-13
12.7.1 Lubrication, coolant assembly drawing	12-13
12.7.2 Lubrication, coolant assembly parts list	12-14

# 1. Safety Regulations

**Read this manual thoroughly before using the machine.**

## 1.1 General safety rules

### 1.1.1 Operating safety precautions

- \* The operator must be a technician who is trained in the operation and familiar with the manual.
- \* Do study the safety information and practice safety first.
- \* The operator should wear safety clothes, such as a helmet safety glass working clothes, safety shoes etc, which must conform to local industrial safety regulations.
- \* Eye protection-eye protection facilities must be considered as optional instruments and shall be carefully selected, fitted and used. Compulsory wearing of spectacles with impact resistant lenses shall be a safety policy.
- \* Before you start a machine, be sure you know what is going happen.
- \* Be sure you know how to stop the machine before you start it.
- \* Be alert for any bystanders or unauthorized person who may be in the area of the machine travel limits areas.

An area is not a hazard to the operator that his control station may be hazardous to an assistant or by standers.

- \* The operator and person (s) performing maintenance must be mutually aware of each other's presence in the machine area.
- \* Do not attempt to perform any cleaning, chip removal or workplace clamping while units are in motion.
- \* Do not attempt to measure moving workplaces in the machine, always stop spindle and machine motion when measuring.
- \* Do not wear gloves and any hand covering while operating machine.  
The operators need wear gloves and safety shoos while leading and unloading.
- \* Long hair should be covered with a protective cover such as a hair net.
- \* Never take depth of cuts beyond machine's capability.
- \* Make sure power has been turned off when machine is unused for sometime.
- \* Due to these potential dangers inherent in a machine tool, protective guards, safety design features and warning signs are utilized. For maximum personal safety it is imperative that all operators, maintenance personnel, observers, and all other that could be exposed to inherent machine hazards shall be made fully aware of potential dangers, and are thoroughly instructed in the safety precautions they must follow to avoid those dangers. It is essential that persons required to become involved with the machine are properly trained and have the required knowledge and skill to perform their respective functions.

- \* If you are assigned as an assistant for any reason, both the assistant and the operator have the responsibility of deciding whom will be in command of the machine and its controls. Shall only one person controls the machine. Anyone else should stand clearly and be visible to the person who is assigned to operate the machine controls.

#### 1.1.2 Safety for tool use

- \* This manual is provided with machine. The user should have the manual available for the personnel working with this machine tool.
- \* User must have available adequate lifting facilities capable of lifting within the safe load limits, also appropriate slings and hitches.
- \* Do not use broken, chipped or defective tools.
- \* Be aware of conditions that may be a fire hazard, such as volatile liquids and machining materials with low fire point.
- \* Do not clean a machine with an air hose. Flying chips can cause personal injury or damage to machine.
- \* Do not use cutters, wrenches, or other tools that do not fit properly.
- \* Do not apply wrenches to moving work or parts.
- \* Do not cutting Mg material.

Materials recommend being use for the machine as following:

1. Steel
2. Iron
3. Casting iron
4. Aluminum alloys
5. Capper-base alloys.

**Note:** Other materials should be selected carefully by operators.

- \* The coolant fluid shall below flash point.

#### 1.1.3 Machine operator's precautions

- \* Guards and shields are to be in place at all times.
- \* Be sure that all protective guards are in place before the machine is started.
- \* During maintenance or lubrication, the machine should be taken out of service.
- \* Do not attempt to use the machine beyond its designated capabilities.
- \* Always supports the work piece as necessary using chucks, steadies and centers.
- \* Never place hand on chuck or work piece to stop rotation of the spindle.
- \* Make sure power has been turned off when machine is unused for sometime.

- \* Never remove protection for even a short time when operating the machine.
- \* Be sure the work piece is mounted securely in the table.
- \* Do not attempt to adjust a tool while the machine is running.
- \* Do not attempt to brake or slow down moving machine parts with your hands or makeshift devices.

#### 1.1.4 Environmental safety

- \* This machine is inadequate for explosive environment.
- \* Keep the immediate area tidy. Avoid slippery floors, remove debris, and remove obstacles, remove chips, etc.
- \* Remember that your work area may change during the day as material is delivered to and removed from your machine area. Be alert for pinch point and work hazard areas created by workplace storage.

## 1.2 Danger areas of machine

In general speaking, the specific risks of the machine come from the rotating cutting tool, which is mounted, on the spindle and the motor drives it. However, a table guard is provided and installed on the lower part of the head to reduce the risk.

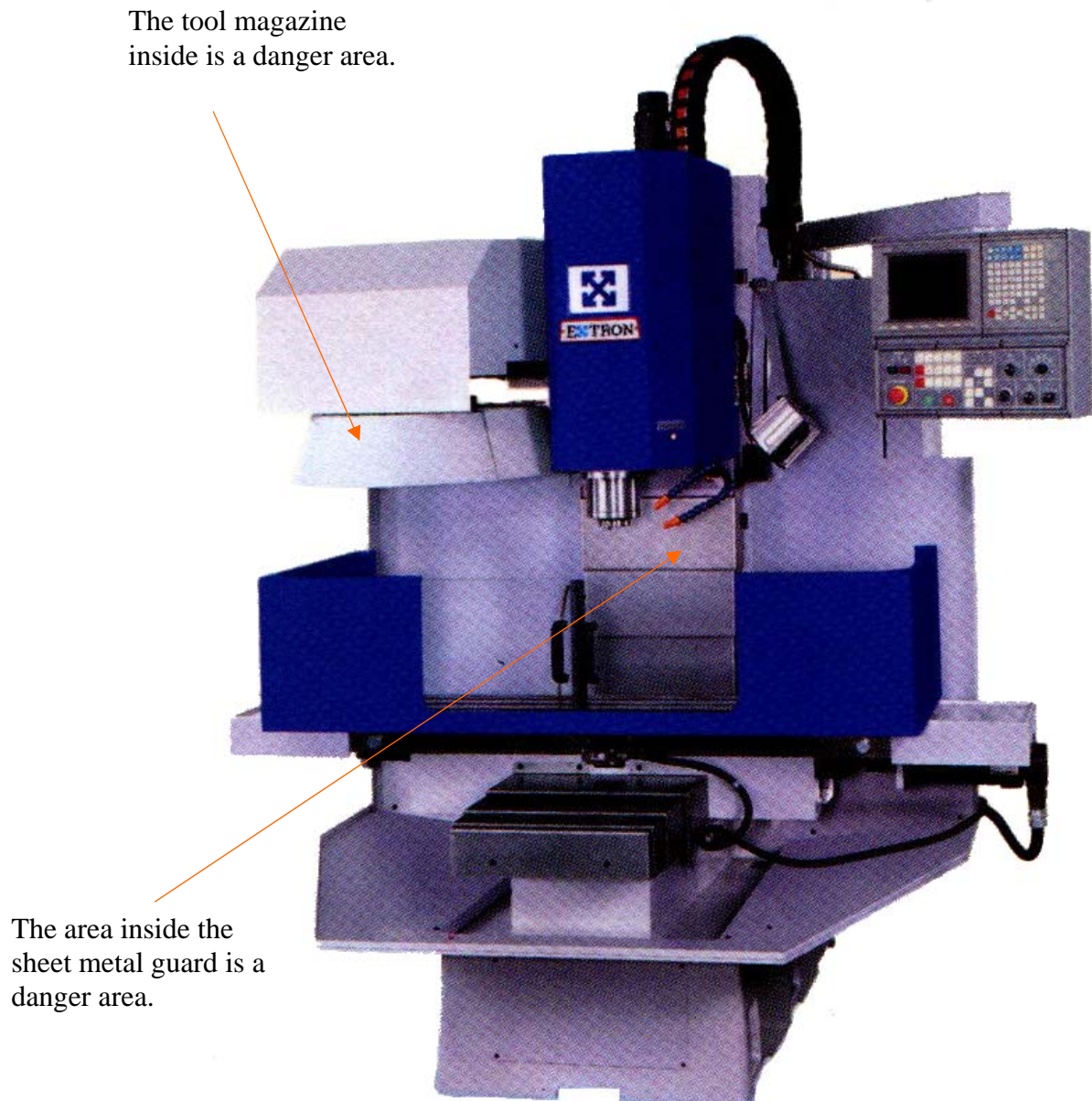


Fig. 1-1

### 1.3 All safety related elements

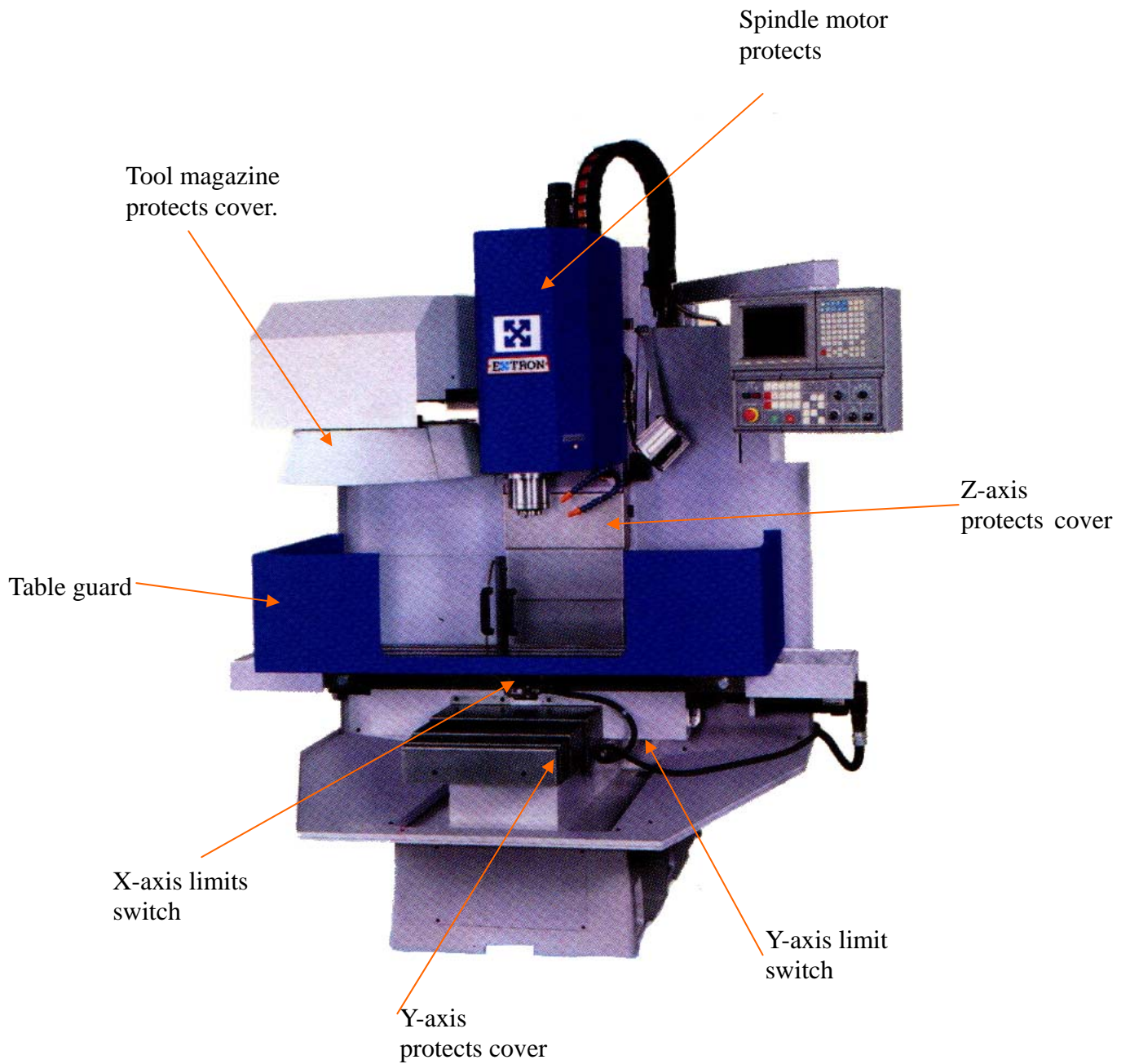
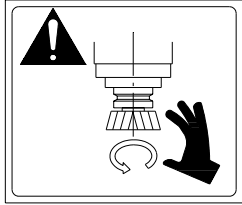


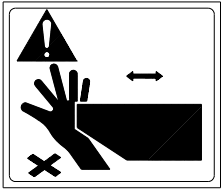
Fig. 1-2

## 1.4 Warning label's, contents and locations

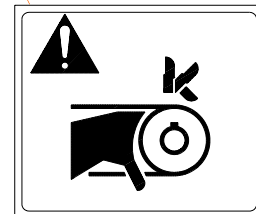
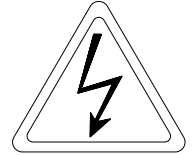
The following pages present all safety related labels attached on this machine as a minimum please read and keep attention on this label before/during operation. They shall be kept in place all time.



Entanglement hazard.  
Keep your hands away  
from the running tooling.



Moving parts. Can  
cause injury. Keep  
hands away.



High speed belt and pulley  
inside. Before remove the cover  
of this side, shutdown the  
power.

Fig. 1-3

## 2. Description of the machine

### 2.1 General description

- (1) This machine is designed with theoretical calculation to comply with the stress requirements especially for spindle rigidity, transmission belt strength, X, Y and Z Axes transmission stress, magazine & tool clamping stress, safety window glass stress coolant system, lubrication system, and etc.
- (2) Materials used for this machine had been considered for properly corrosion, wearing, and life time to avoid faults on machine.
- (3) The air system designed inciting pressure; component supports are in compliance with the design instructions.

### 2.2 Out looking, main units, and operator's position.

#### 2.2.1 Names of machine parts

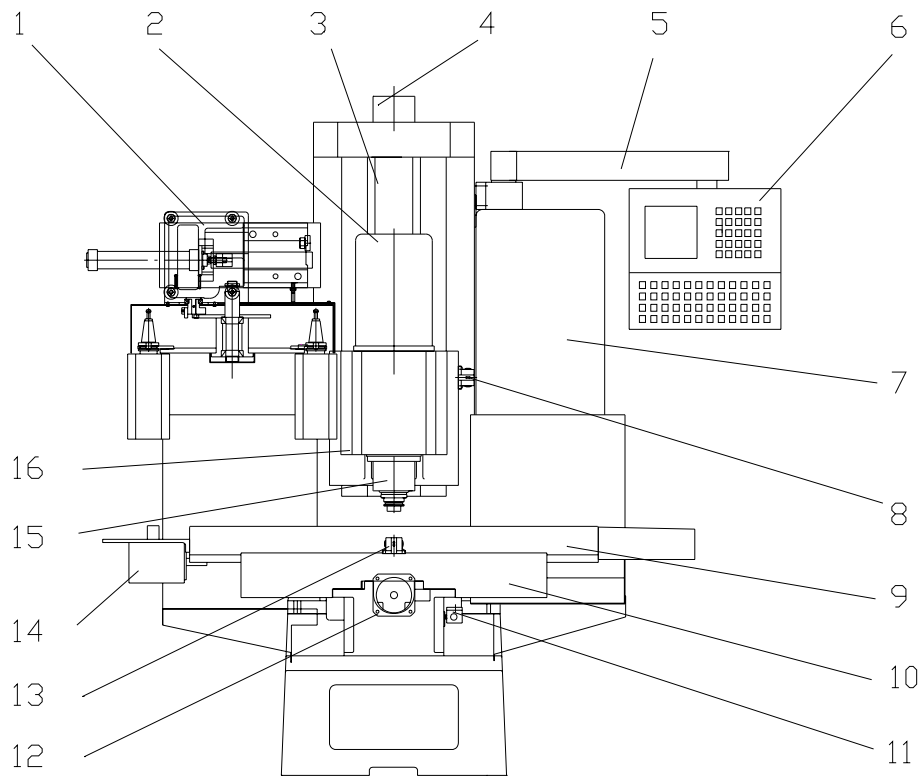


Fig. 2-1

- |                        |                               |
|------------------------|-------------------------------|
| 1. Tool magazine       | 9. Spindle casting Work table |
| 2. Spindle motor       | 10. Saddle                    |
| 3. Column              | 11. Y axis limit switch       |
| 4. Z axis servo motor  | 12. Y axis servo motor        |
| 5. Control arm         | 13. X axis limit switch       |
| 6. Operate box         | 14. X axis servo motor        |
| 7. Electric box        | 15. Spindle                   |
| 8. Z axis limit switch | 16. Spindle casting           |

## 2.2.2 Operator's position

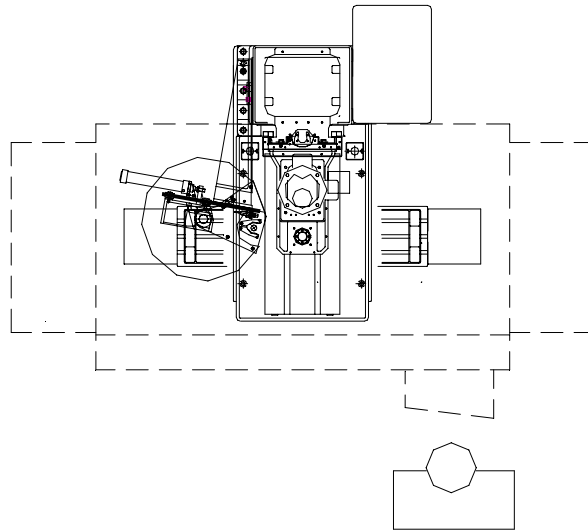


Fig. 2-2

## 2.2.3 Noise Level

- (1) The noise test is carried out in compliance with ISO 11202:1996.
- (2) No load
  - a. A-weighted sound pressure level at operator's  
 $L_{A,eq} = 72 \text{ dB (A)}$
  - b. A-weighted sound power level  
 $L_{w,eq} = 86.84 \text{ dB (A)}$
- (3) Load
  - a. A-weighted sound pressure level at operator's  
 $L_{A,eq} = 78.5 \text{ dB (A)}$
  - b. A-weighted sound power level  
 $L_{w,eq} = 91.18 \text{ dB (A)}$

## 2.2.4 Spindle nose detail

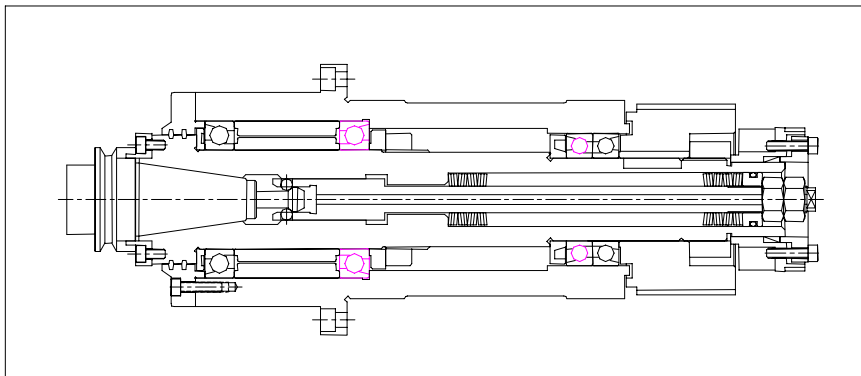


Fig. 2-3

## 2.3 Machine specifications

### 2.3.1 Specification

#### SPECIFICATIONS

Work table	305x1270mm (12x50")
Table T-slots (WxN)	18mm (0.71")x3
Table load max	640kgs (770 lbs)
X axis travel	850mm (33-1/2")
Y axis travel	460mm (18")
Z axis travel	485mm (19")
Spindle nose to table	110-595mm (4-5/16"~23-3/8")
Spindle center to column	480mm (18-7/8")
Spindle taper	BT #40
Spindle speed	60-6000 R.P.M.
Spindle motor	AC 5HP or servo motor 7-1/2HP
3 Axes drive motor	DC or AC 1kw
Cutting feed	4M/min (160ipm)
Rapid feed	10M/min (400ipm)
ATC type	Armless Type
Tool change time (tool to tool)	12 sec
Max. tool diameter	$\phi$ 100mm ( $\phi$ 3-15/16")
Max. tool length	275mm (10-15/16")
Max. tool weight	7.5kgs (16lbs)
Weight (Approx)	2650kgs (5800 lbs)
Floor space (LxWxH)	270x180x215cm (106x71x85")
Packed size (LxWxH)	180x200x230cm (71x79X90")
Positioning accuracy	$\pm$ 0.01mm ( $\pm$ 0.0004")
Repeatability accuracy	$\pm$ 0.005mm ( $\pm$ 0.0002")

#### Standard accessories

1. Table guard
2. Wide chip tray
3. Coolant pump system
4. Auto lubrication system
5. halogen work light
6. Y axis front & back used mwatal telescoping
7. Tools & tool box.
8. Lenelling kolts & nads

#### Optional accessories

1. ATC 16 tools magazine
2. AC servo7-1/2HP motor
3. 4 th axis package.
4. Rotary table sets
5. Full metal guard
6. 8000rpm spindle

### 2.3.2 Constraints on materials

Any material will generate dust or other substances harmful to health and pollute the environment shall be forbidden.

### 2.3.3 Working space required

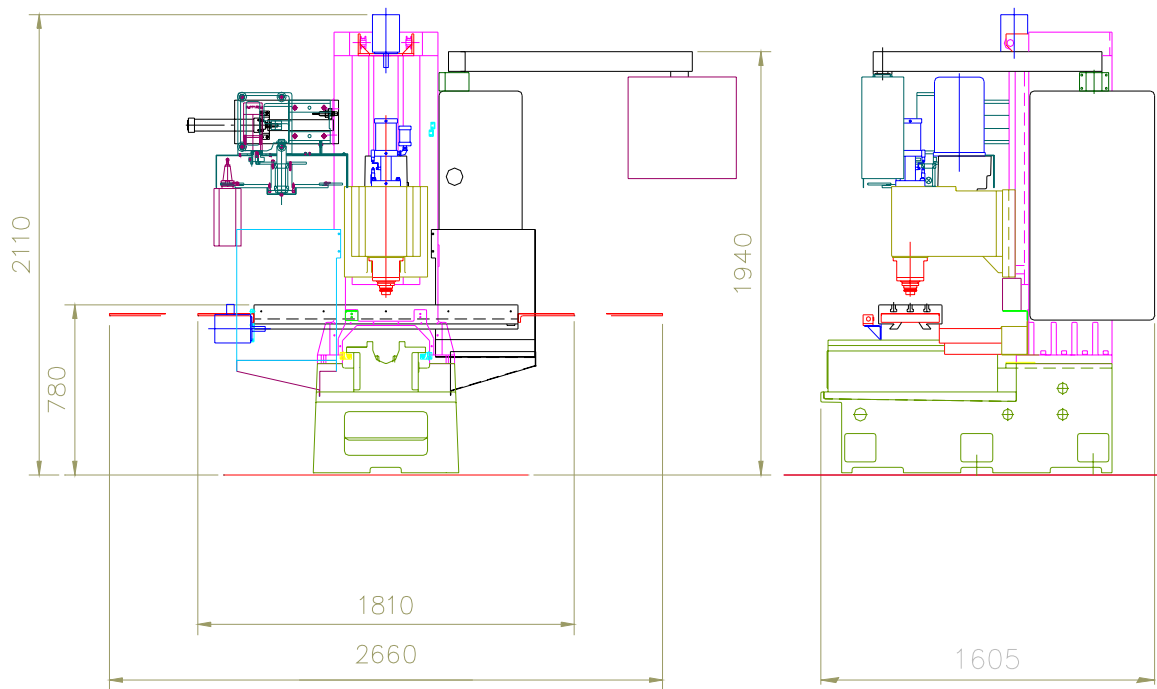


Fig. 2-3

### 2.3.4 Requirements of operators and servicemen

It is so designed that only a skilled technician is allowed to operate this machine, otherwise he must be trained until knowing how to operate correctly and safely. Qualified technicians shall carry out the electrical maintenance works only.

### 2.3.5 Requirements of circumstance

It is so designed that this machine cannot be used in the potential explosive environment. Generally, this machine will be installed on the following conditions:

- (1) Ambient temperature: 5-40°

- (2) Atmosphere: Free from excessive dust, acid fume, corrosive gases and salt.
- (3) Avoid exposing to abnormal vibration.
- (4) Avoid exposing to direct sunlight or heat rays, which can change environmental temperature.
- (5) Have to connect to earth.
- (6) Relative humidity: 30~95% (without condensation)
  
- (7) Source frequency: nominal frequency  $\pm 1\%$
- (8) Supply voltage: nominal supply voltage  $\pm 10\%$

## 2.4 Magazine system

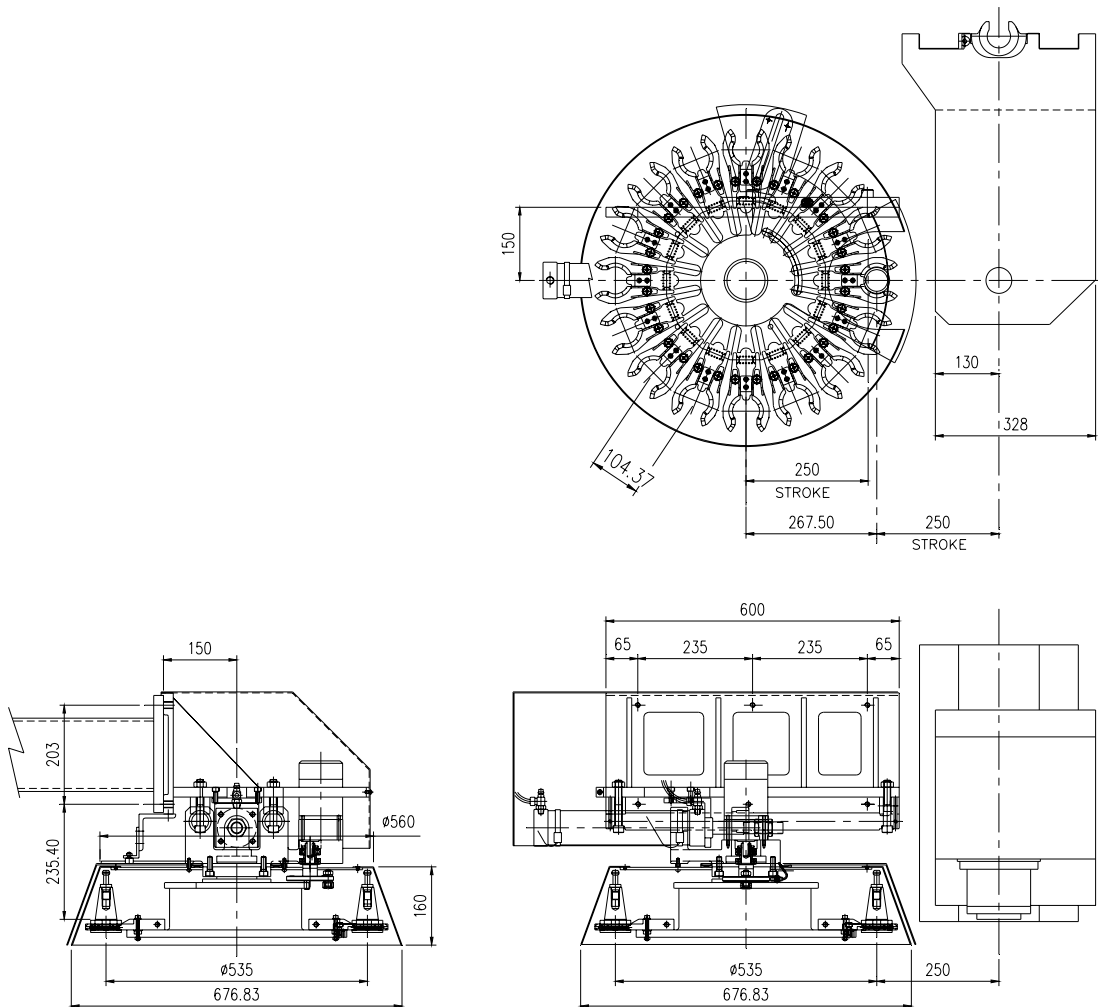
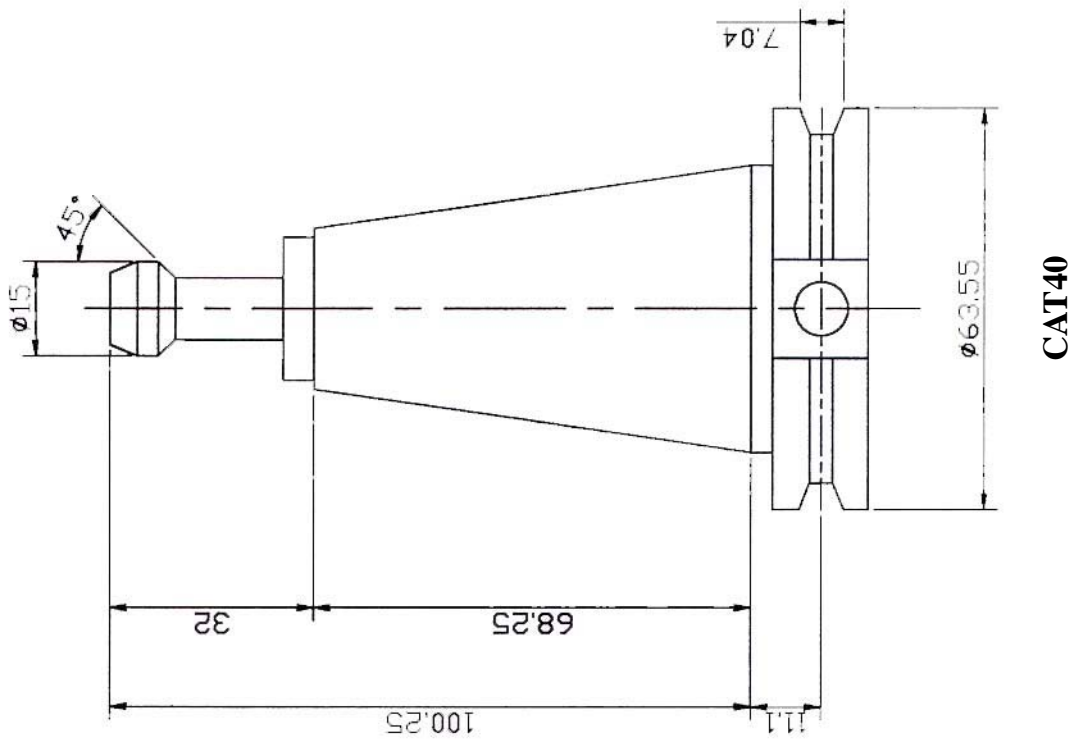
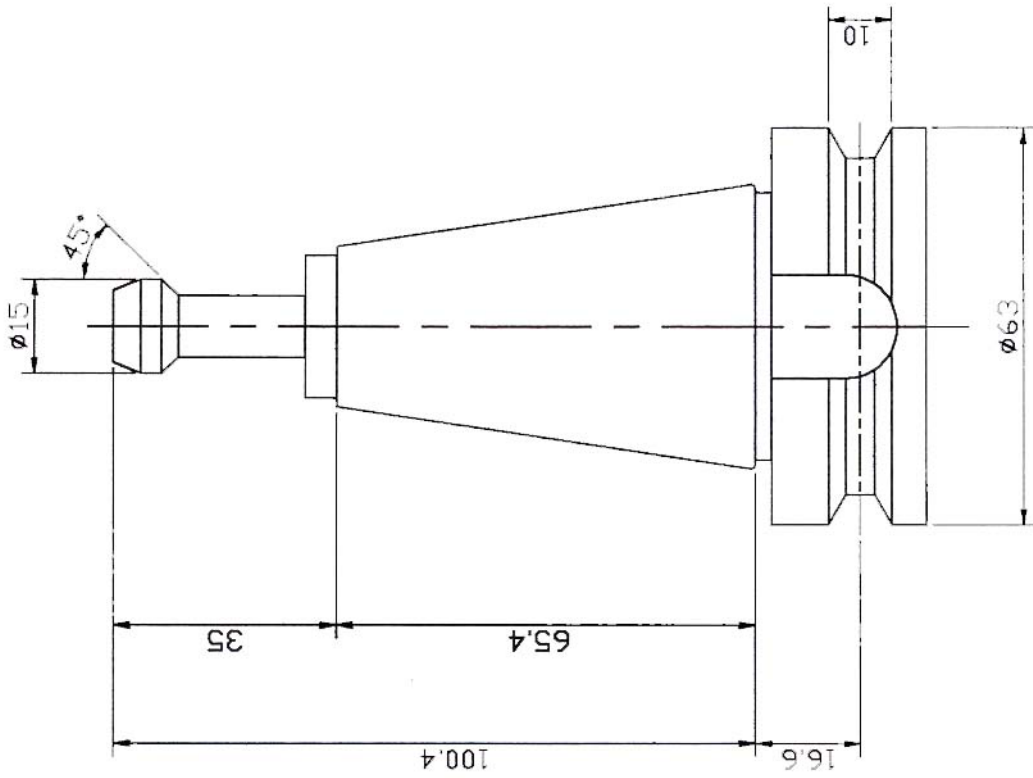


Fig. 2-4



**CAT40**



**BT40**

### 3. Preparation for installation

#### 3.1 Requirements of foundation

With the common usage of tungsten carbide cutting tools nowadays, heavy cutting and quicker spindle speed are therefore reinforced. This may cause the vibration easily. In order to ascertain the best cutting condition, it is necessary to build a sound & good floor basis.( please refer to following figure )

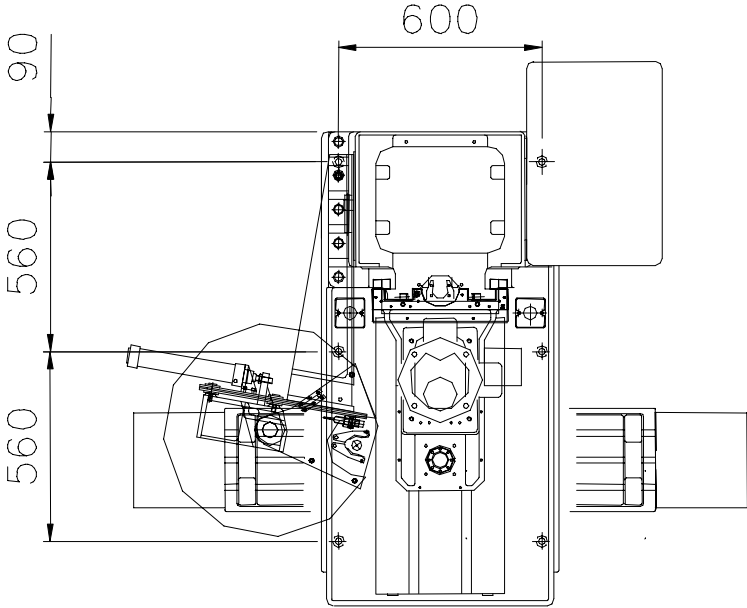


Fig. 3-1

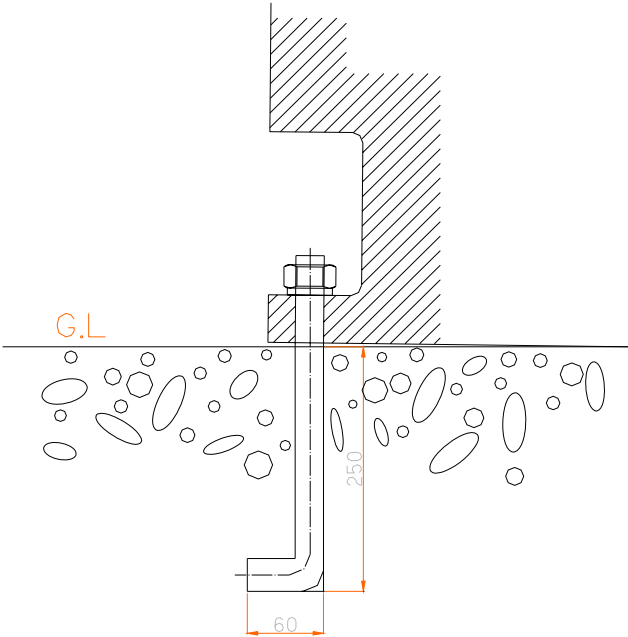


Fig. 3-2

### 3.2 Requirements of power supply

Voltage	Steady state voltage 0,9 ... 1,1 of nominal voltage.
Frequency	0,99 ... 1,01 of normal frequency continuously, 0,98 ... 1,02 short time.
Harmonics	Harmonic distortion not to exceed 10% of the total r.m.s. Voltage between the live conductors for the sum of the 2nd through 5th harmonic.
Voltage unbalance in 3-phase supplies	Neither the voltage of the negative sequence component nor the voltage of the zero sequence component shall exceed 2% of the positive sequence component.
Voltage impulses	not to exceed 1,5 ms in duration with a rise / fall time between 500 ns and 500 ns and a peak value not more than 200% of the rated r.m.s supply voltage.
Voltage interruption	Supply interrupted or at zero voltage for not more than 3 ms at any random time in the supply cycle. There shall be more than 1 s between successive interruptions.
Voltage dips	voltage dips shall not exceed 20 % of the peak voltage of the supply for more than one cycle. There shall be more than 1 s between successive dips.

## 4. Transportation and installation

### 4.1 Shipping chest

This chest is used to pack the machine for shipment.

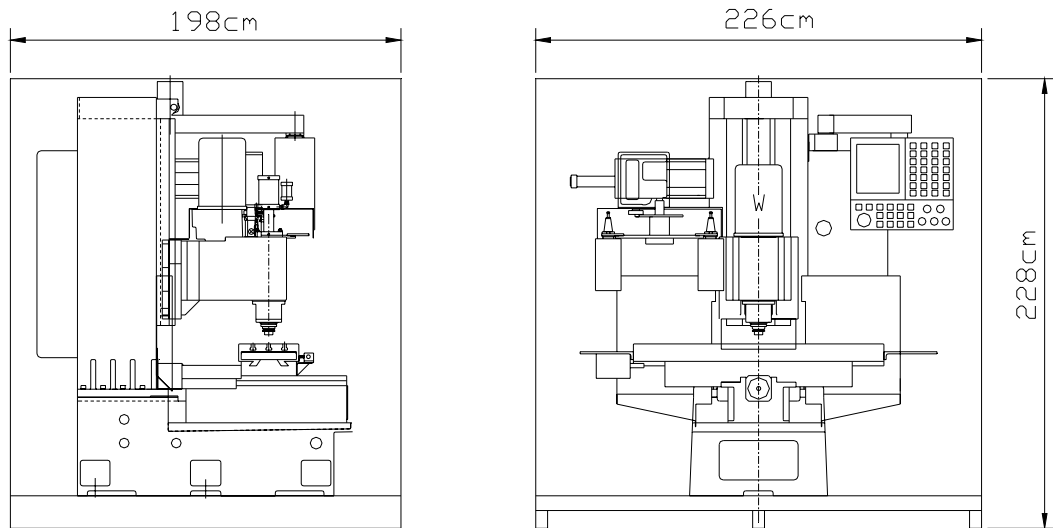


Fig. 4-1

### 4.2 Notices for transportation

- (1) The machine will be moved and bumped caused by braking, turning corner and shaking when the truck moves on the road. Therefore, the machine should be tightening in secure and balanced condition before transporting.
- (2) This machine is a package unit, all the parts should be fixed firmly to link up with the machine before shifting.
- (3) Make sure that the machine is completely fasten with the bottom rack of the chest or carrying rack by means of bolts.
- (4) To avoid coolant and oil leakage and the machine rusting because of moisture during transporting, they shall be drained out completely prior to shifting. However required amounts of them shall be refilled before starting up.
- (5) For the interests of machine safety and personal safety, the hoist driver shall be qualified with a certificate.
- (6) Sunshine and raindrop shall be avoided during transporting.

### 4.3 Notices for open the shipping chest

- (1) The chest shall be opened by professional personnel with specific tools.
- (2) The top cover shall be dismantled first and second t the side walls.
- (3) Don't open the chest in case of the workers with bad mood.
- (4) After it is uncovered, people who are not professional technician for trial run and service shall be prohibited to wire the power, trial run the machine, dismantle or any else relevant.
- (5) Please refer to the local regulation of environment protection to treat the scraps after the chest was broken.

### 4.4 Requirement of transportation equipment

#### 4.4.1 Methods of transport

- (1) Machine net weight: approx. 2650 kg.
- (2) Prior to unpacking, transport may be using a forklift.
- (3) After packing, transport may be made by hoisting with a reinforced cable.
  - a. Use the forklift of fork to lift an about 10Cm high. Then put the riser at the bottom.
  - b. Drive the fork to the side of machine and insert the forklift slowly into the space of the bottom. After the base is put on the forklift completely, lift the machine slowly.

**NOTE:** Must not lift the machine at the side of machine directly, which will overturn the machine.

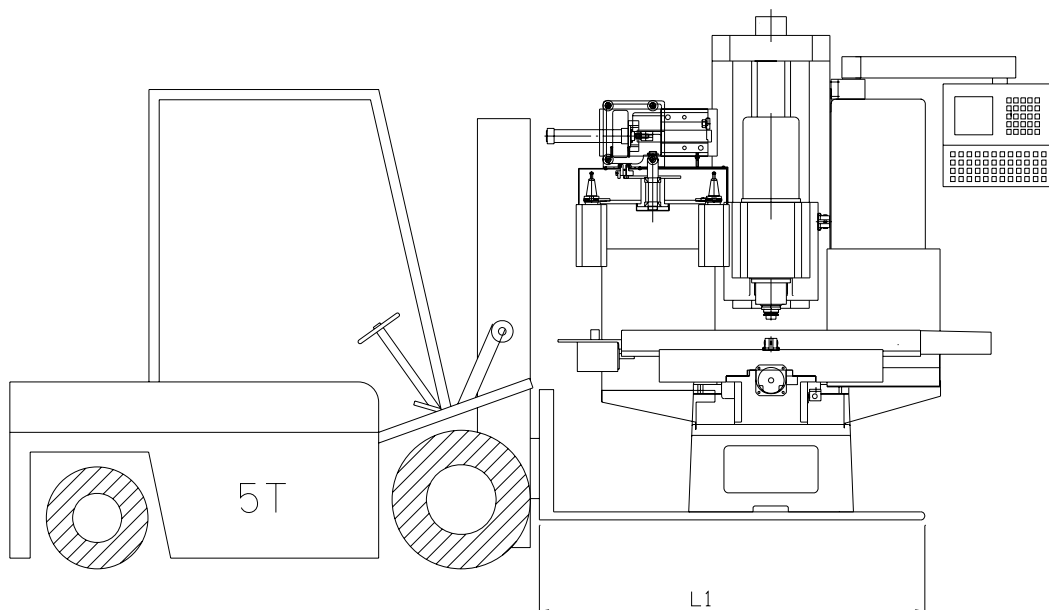


Fig. 4-2

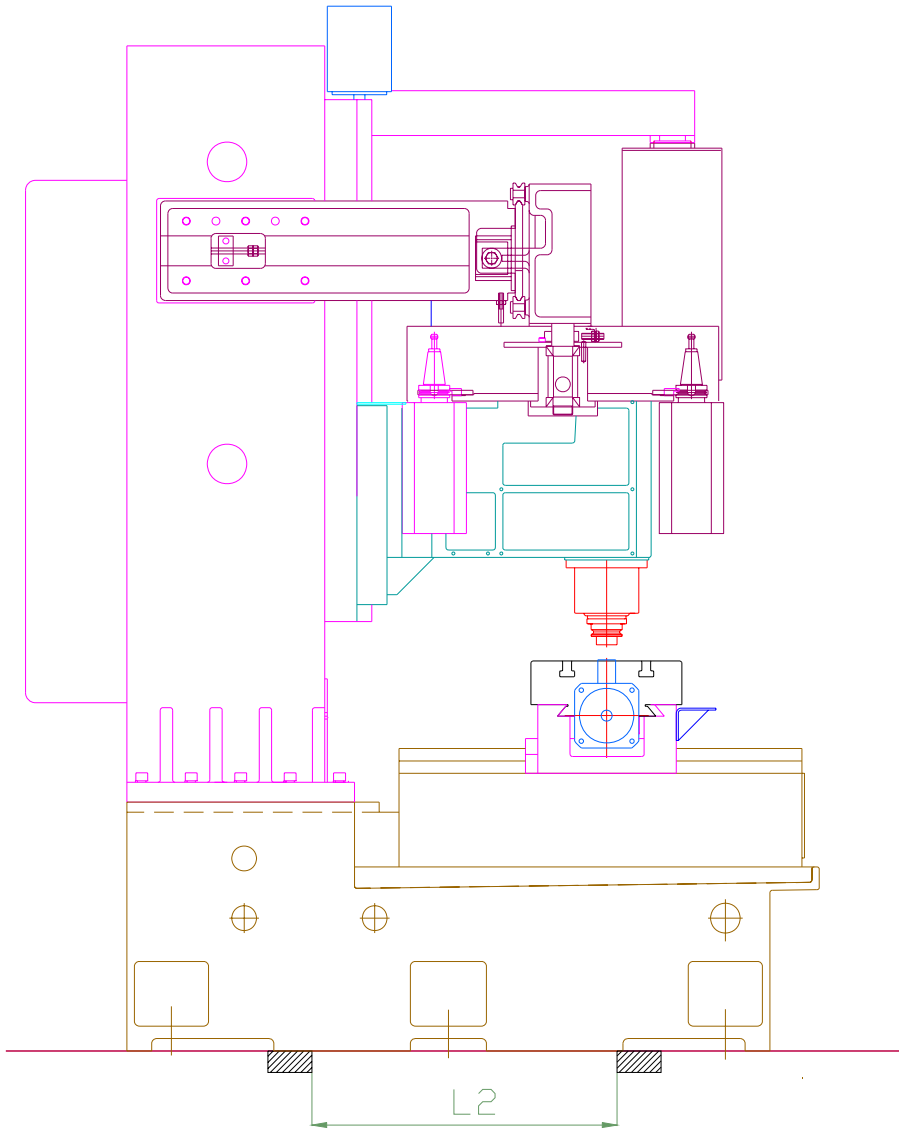


Fig. 4-3

W	2650 kg
T	5 tones
L1	770 mm
L2	2 m

Remarks:

- (1) Always ensures capacity of equipment is adequate before attempting to lift.
- (2) When the machine is being hoisted, keep the personnel after.
- (3) To hoist the unpacked case by reinforced cable, the motion shall that observe strictly the instruction appeared on the side of the wooden case.
- (4) Keep the worktable and saddle in the proper positions so as to keep the machine balance.
- (5) Do not hoist the machine too high. The best position is to keep the machine base approximately 10cm from the ground.
- (6) Only an authorized forklift or crane operator is allowed to transport the machine.

#### 4.4.2 Cautions for unpacking

- (1). To transport the machine, it is necessary to support the machine with the rated case or pallet to avoid moisture. In case of damage by moistening, please contact our agent or the transported.
- (2). After unpacking, check and see if all tools and accessories are intact, otherwise, please contact our agent.
- (3). After unpacking, do not move the sliding surfaces and worktable as long as the rustproof oil on them are cleaned off and followed with the lubrication.
- (4). Before the cleaning starts, the sliding protective pieces must be dismantled, and all sliding surface setting levers, loosened. When the rustproof oil is removed, proper amount of lubricant should be injected onto various sliding surfaces. Then move the sliding surfaces for final cleansing and lubrication.
- (5). Do not remove the oil brushes in the process of cleaning.
- (6). Do not use gasoline or any other inflammable oil cleaner.

### 4.5 Notices for installation

B5AC is a precession CNC milling machine, any work related to this machine shall only be by service engineers or qualified technicians. This manual shall be prior to use it.

#### 4.5.1 Work environment

This machine is inadequate for any explosive environment.

#### 4.5.2 Power supply installation

Using a phase-sequence detector to check the correctness of phase sequence (L1, L2, and L3).

### 4.5.3 Leveling adjustment

- (1) To keep the accuracy and to maintain the good condition of lifetime of this machine, leveling adjustment is one of the important factors. To show the excellent precision and quality of this machine, please carry out leveling accordingly after installation.
- (2) First, a flat ground being able to burden the weight of machine shall be prepared. After positioning the machine on the prepared foundation, then install the machine according to the instruction manual. Roughly leveling the machine by adjusting the leveling bolts at the bottom of machine base. Moving worktable to the X and Y axis middle position place an accurate level 150mm length with a minimum scale of 0.02mm/M (0.0008"/40") on the worktable. Then turning the leveling bolts to make the deviation within 0.02mm/M (0.0008"/40").
- (3) If vibration occurs due to ill horizontality or cutting scared defective condition occurs, leveling shall be re-tuning again.
- (4) Within 2 or 3 days after installing completed, the horizontal should be re-checked before operating. Under normal working condition, the horizontal shall be examined in a period of half year initially and then quarterly in the subsequent years.

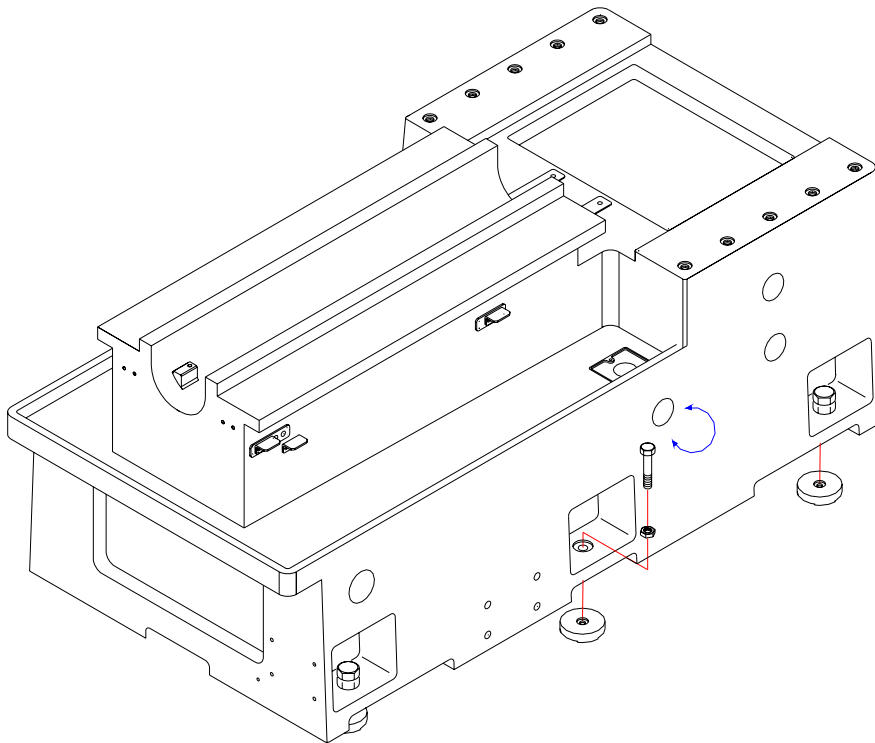


Fig. 4-4

## 5. Preparation for trial runs

### 5.1 Cleaning

All machine surfaces are covered with rust preservative, which must be thoroughly cleaned before moving any parts of the machine. Only mild solvent and soft rags must be used for cleaning.

**NOTE:** Never use lacquer, thinner, gasoline or other inflammable as a cleaning fluid.

### 5.2 Visible inspection

At first, removing any stopper used to prevent the machine from movement in transportation (e.g. the doorplates). Check if the machine is rusted and damaged as well as shape transformed, broken, etc. Any fault shall be removed prior to trial run.

### 5.3 Fluids

Lubricant and coolant shall be filled to designated quantities first. Referring to section 7.5 to perform maintenance to maintain the machine for operating in good condition.

### 5.4 Pneumatic piping

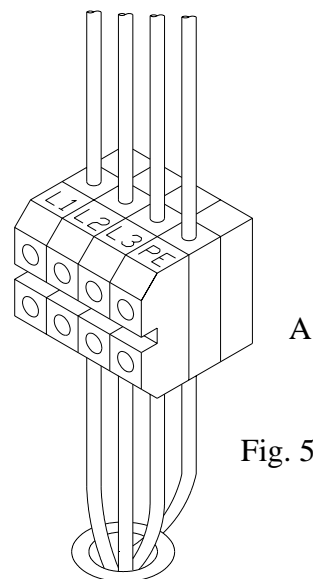
The pneumatic power system, all have to do is to pay attention toward the cleanness of air source and then connect it to the machine.

Any unclean pneumatic piping will be a key point to damage the filter-regulator lubricator unit and the pneumatic system leading therefore to deteriorate producing efficiency.

### 5.5 Electrical earthing system

Make sure that a stable power voltage as well as the frequency for NC unit wires the machine. The machine should be earthen properly to protect the NC unit from any electric shock.

A: Connecting terminal.  
L1,L2,L3: Power cables above  $5.5 \text{ mm}^2$   
PE: Protective earthing cable above  $5.5 \text{ mm}^2$



## 5.6. Trial run

- (1) Turn on the power(refer to 6.1 power ON / OFF)
- (2) Close safety door
- (3) Zero return
  - a. Set “Mode Select” to “ZRN” position.
  - b. Continually pressing the Feed button associated with a direction enables to travel rapidly along the axis selected. After reaching the deceleration point, it inches toward the machine origin.
- (4) Switch MODE select to JOG mode:
  - a. Pressed  or  button checked to see if the X axis moving and direction were correct.
  - b. Pressed  or  button checked to see if the Y axis moving and direction were correct.
  - c. Pressed  or  button checked to see if the Z axis moving and direction were correct.
- (5) In the JOG mode, pressed  or  button checked to see if the rotating direction were correct.
- (6) In the JOG mode, pressed coolant button the checked to see it the coolant pump were allright.
- (7) Pressed  button, then checked to see if the work light were allright.

### Notice:

- (1) Before you start a machine, be sure you know what is going happen.
- (2) Be sure you know how to stop the machine before you start it.
- (3) The operator performing trial run must be mutually aware of each other’s presence in the machine area.

After trail run, if any problem you may contact our agencies if service needed.

## **6. Operation and function instructions**

The function explanation, the codes used in program, the programming, etc., please refer to CENTROID, MIRL M2000 CNC-control Operator's Manual attached.

## 7. Lubrication, Air pressure and coolant

### 7.1 Spindle

Bearings in the spindle are forced lubricated the assembling by grease (KLEUBER ISO FLEX-NBU 15).

This high-speed grease is low-temperature and long-term grease, especially for high-speed rolling bearings or high load.

When the machine does not be operated for a long time (morn than 6 days), you should perform the spindle at low speed about one hour before the operation.

### 7.2 lubrication tank and drawing

Lubrication tank supplies the lubricant for X, Y and Z-axis ball screws. You must refill oil when the oil surfaces below the low line.

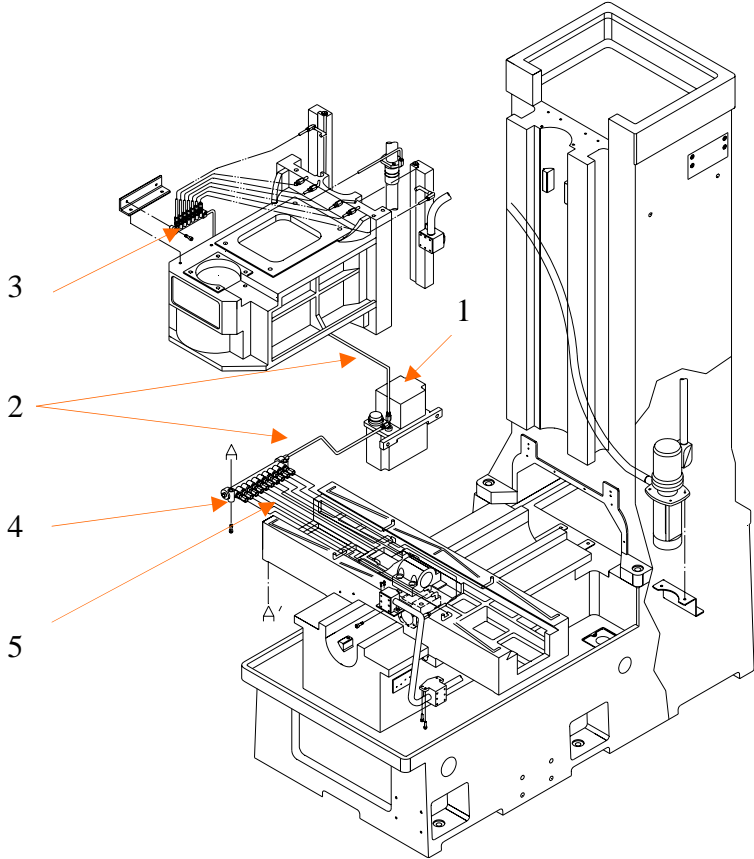


Fig. 7-1

NO	Description	Qty	Specification
1	Lube box	1	CESD-TYPE
2	Lubrication string	2	φ10 mm
3	Oil distribute	1	
4	Oil distribute	1	A-12
5	Lubrication tubing		φ4 mm

### 7.3 Pneumatic power system

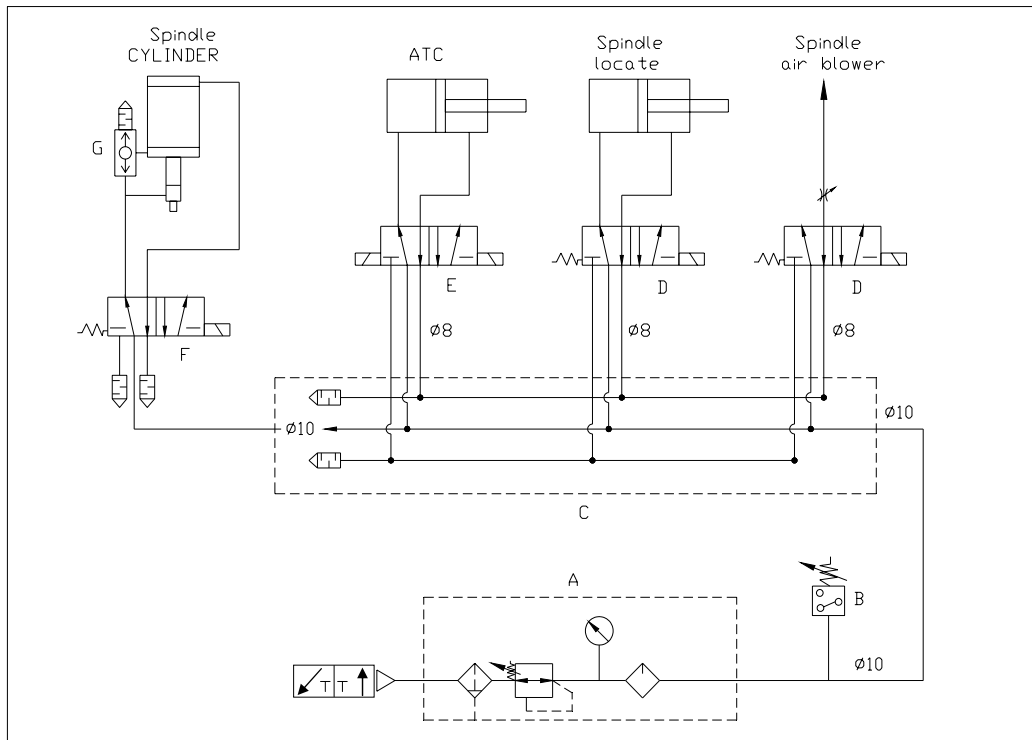


Figure 7.2 Scheme of pneumatic

A	050FR/L	Air Service Equipment	1
B	KP1	Pressure control	1
C	BN-260-3TN	End subbase	1
D	BN-2600-4E1/110V	Solenoid valve	2
E	BN-2600-4E2/110V	Solenoid valve	1
F	BN-3000-4E1/110V	Solenoid valve	1
G	OV-03	Pressure discharge	1
H	PSL-02	Silencer valve	4
I	AWG-03	Pressure control switch	1

### 7.4 Adjustment is air pressure

The air pressure is adjusted normally at 5-7 kgf/cm<sup>2</sup>.

### 7.5 Coolant replacement

The sump locates in the base of the machine. The volume of the sump is 160 liters.

1. Turn off the power source.
2. The dirty coolant is drained through the drain plug on the back of the machine base.
3. Supply fresh coolant through the filter into the sump.

Table of coolant usage

Material	Recommendation	PERIOD
Ferrous materials	A RAL SAROL 345	4 month
Cast iron	ARAL MULTROL 820	
Else materials	Any suitable coolant. Do not use low flash point coolant. Adequate coolant with little or no harm to health.	

#### Notice:

The old coolant handling should comply with the local usage.

## 8. Adjustment

As a result of long-term operation between the sliding surface and gibs will create a clearance. Therefore the gibs must be adjusted to upkeep the precision of sliding surfaces.

### 8.1 Adjustment of work table gibs

The gibs are attached onto between the saddle seat and worktable dovetail.

- (1) Clean the slide way and add the lubricant.
- (2) Use a screwdriver and spanner adjusts the gib screw and nut (M) on both sides of saddle seal.
- (3) Replace the excessive worn-out gib whenever necessary.

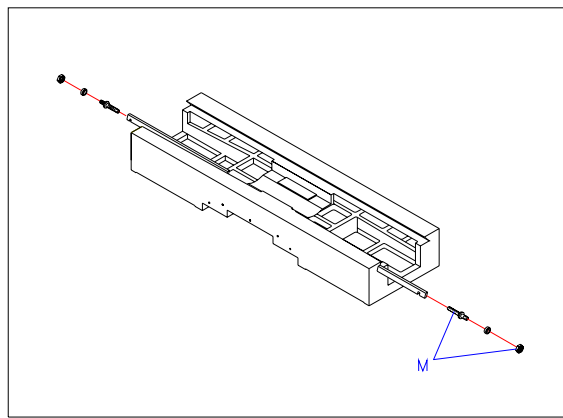


Fig. 8-1

### 8.2 Adjustment of saddle gib

- (1) Move the saddle to the front of base.
- (2) Clean the slide way and add the lubricant.
- (3) Use screwdriver to adjust the gib screw (D) of the saddle.
- (4) Employ the same methods to adjust the work table gib.

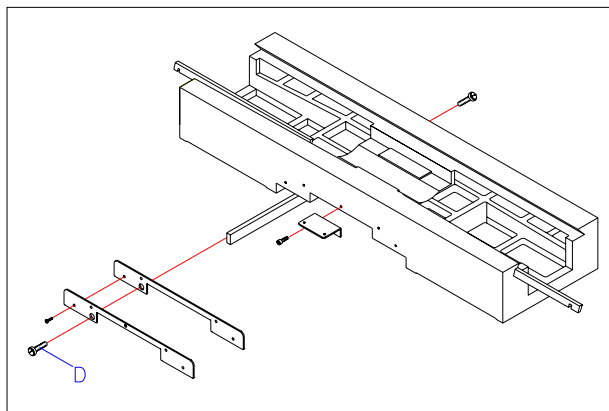


Fig. 8-2

### 8.3 Adjustment of elevating gib

The elevating gib is attached to the precision of elevating and column dovetail. The adjustment can be performed as follows:

- (1) Clean the slide way and add the lubricant.
- (2) Use a screwdriver to adjust the gib screw (R) of the elevating.
- (3) Employ the sane methods to adjust the word table gib.

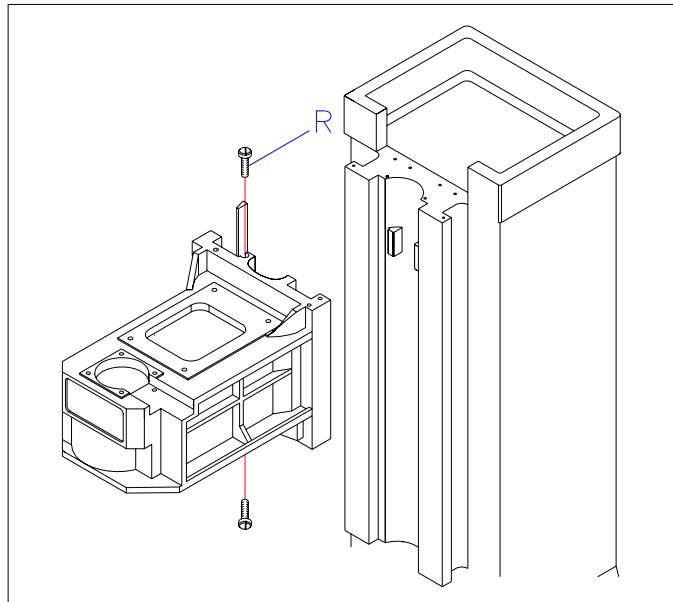


Fig. 8-3

## **9. Service and maintenance**

### **9.1 Belt maintenance**

- (1) When the abnormal belt is discovered; please exchange or adjust the belt immediately. Because of tightness, looseness, transforming and friction ill make noise and have an effect on belts lifetime.
- (2) Belt transmission should be examined the status of transmitting, noise and efficiency etc. to prevent abnormal status occurred.
- (3) In case of exchange, the sharp tools are avoided to use the belt may be damaged to influence transmitting efficiency and lift time of belt.
- (4) In case of machine stops operating more than 6 months, the belt should be loosened to prevent fatigue from long-time tension.

### **9.2 Air pressure system maintenance**

- (1) The pressure of compressed air source is ordinary 5-7 kg/cm<sup>2</sup>.
- (2) Make sure to install the filter-regulator-lubricator module. (The filter should be cleaned up and lubricant added in the fixing period) in order to keep the pneumatic parts work smoothly and life lasting longer.

### **9.3 Lubricant system maintenance**

Eyes examine the pipe loop way at particular period (especially over one year). In order to prevent pipe loop fallen leaked, broken, stress fold. Blocked all lubricant parts should be lubricated sufficiently.

### **9.4 Cutting coolant system maintenance**

- (1) The purpose to use coolant is to reduce thermal transformation while processing, also, the normal accuracy of workplace can be kept and the tool lift time increased. So that the coolant can be selected properly depending on the sort of materials of workplace.
- (2) Dependence on the degree of pollution, the coolant should be changed regularly and avoids physical damage of worker and influence the accurate precise of workplace. According to the tankard of environmental protection.
- (3) The polluted coolant should be treated by treatment system, before drained off. Be cautioned the polluted coolant is treated incorrect method when drained out. The human health and environment will be damaged.

### **9.5 Electricity maintenance**

- (1) All wiring shall be examined damage by eyes at particular period.
- (2) Prevention outside substances more into the control case and operation case due to human omission. This will cause short-circuiting.

- (3) Check and confirm all L.S. signals at particular period.
- (4) Clean up ventilator filter and check all vent hold of electrical control box at particular period.
- (5) The rotating of main motor's cooling fan shall be confirmed.

**9.6 Maintenance measures for critical safety devices**

The critical safety devices are particularly relating to safety. In order to give those device healthy operation conditions, it is necessary to perform maintenance procedure as per the following table.

Device	Description of Maintenance
E-Stop	Pushing the Emergency stop button after daily starting up according to Operator's Manual. A "NOT READY" message displayed on screen means E-stop is healthy; otherwise, it is faulty and shall have a service by qualified technician.
Main Power Switch	Checking the tightness of holder every half year, if it is loose it must be tightened. If the fixing screw between the holder and link wears, replacement shall be changed according to the specification on the electrical parts list.
Lubricant Tank	Lubricant must be filled if lubricant shortage message displayed on CRT.

**9.7 Cleaning for chip**

- (1) At first, open the door then turn off main power supply.
- (2) The operator should wear safety shoes, helmet; safety glove, safety glassed and clothes.
- (3) Use besom, hairbrush and dustpan clean chip.

## 10. Self service and dismantling

### 10.1 Maintenance precaution

When unit parts of this machine are fixed, the specific tool equipment is required. And only the experienced professional technician is allowed to repair machine.

In case unit parts out of order, as electricity controller, ball screw linear way, and so on. The unit parts cannot be dismantled and fixed arbitrarily by you. You may contact our agencies if service needed.

### 10.2 Safety confirmation

Turn the main power off and set up warning signs at each side surrounding the achiever with 3 meters; if the machine is disassembled and fixed.

### 10.3 Requirements of replacement

For safety and keeping accurate quality and sort of unit parts should be used as the same as the original designed specification and manufacture brand, while exchanging or fixing needed.

### 10.4 Simply maintaining and dismantling each main parts unit

#### 10.4.1 Spindle belt exchanging

- (1) Turn off the power source.
- (2) Dismantle the four nuts (A) and take off the (B)
- (3) Dismantle the four hexagonal socket head screws (C) and lift the motor (D).
- (4) When the speed change belt is replace accordingly (E), restore the machine by reversing the orders.

**Note:** The replaced belt shall conform to that of company specifications.

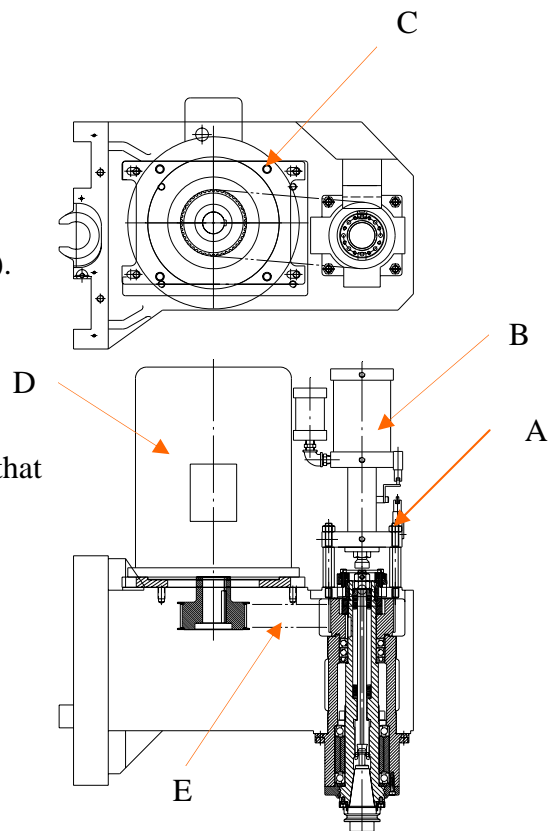


Fig. 10-1

#### 10.4.2 Coolant pump exchange

At first, remove wire and loosen the fixing bolts of coolant pump. Then take the unit off to exchange. Test for rotating confirmation action before operating.

### 10.5 Inspection and maintenance period list

#### 10.5.1 Inspection

No	Item	Inspection detail	Period
1	Voice	In operation, checked to see if the machine were abnormal voice.	Daily
2	Vibration	In operation, checked to see if the machine were abnormal voice.	Daily
3	Temperature	After operating, checked to see if the head stock temperature were too high.	Daily
4	Motor	Checked to see if the spindle motor were run correct.	Daily
5	Lubrication	Checked to see if the lubrication oil were correct.	Weekly
6	Cleaning	Checked to see if the machine were cleaning.	Weekly
7	Button	Checked to see if the push button were acumen.	Monthly

#### 10.5.2 Maintenance

No	Maintenance detail	Period
1	In case of machine stops operating the belt should loosened to prevent fatigue from long-time tension.	6 months
2	The pipe loop way be examined by eyes at particular period.	Especially over one year
3	Dependence on the degree of pollution, the coolant should be changed.	4 months
4	All wiring shall be examined damage by eyes at particular period.	1 month

## **11. Troubles and trouble shooting**

### **11.1 X axis, Y axis and Z axis**

- (1) Problem: The longer of processing, the shorter of the finished dimension.  
Remedy: Please examine the precision screw nut and motor bolt, whether they are loose.
- (2) Problem: The dimension drift is too sensitive to temperature.  
Remedy: the precision bearings are over pre-loaded, please adjust.
- (3) Problem: Zero return fails.  
Remedy: Check the dog and proximity sensor.
- (4) Problem: Abnormal noise and vibration occurred in motion.  
Remedy: Check the bearings, ball screw, and linear ways.
- (5) Problem: Doesn't work.  
Remedy: Check the PCB and wiring.

### **11.2 Coolant system**

- (1) Problem: Coolant ejected out over volume.  
Remedy: Check the piping and the pollution degree of coolant and the pump suction inlet.
- (2) Problem: The coolant drains back if not in use.  
Remedy: check the checking valve.

### **11.3 Lubricant system**

- (1) Problem: Lubricated mechanical parts out of lubricant.  
Remedy: Check the lubricator and piping.
- (2) Problem: Improper oil supply  
Remedy: Check the lubricator and the specification of lubricant.

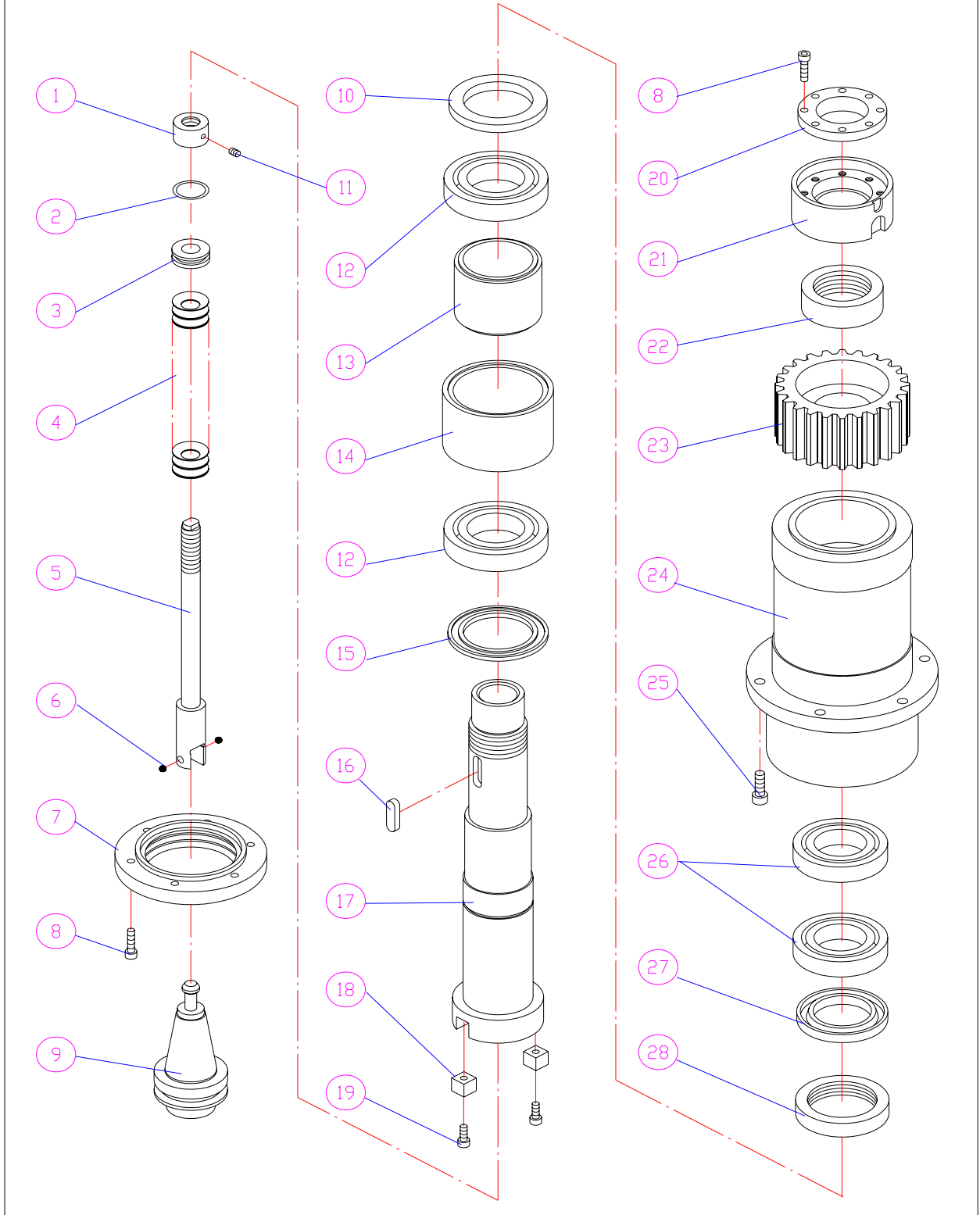
### **11.4 Electricity**

- (1) Problem: Abnormal secondary power.  
Remedy: Check the wiring if there is short-circuit or disconnection.
- (2) Problem: The program processing halted.  
Remedy: Check the circuits and connecting cables.

## 12. Parts list

### 12.1 SPINDLE ASSEMBLY

#### 12.1.1 SPINDLE ASSEMBLY DRAWING

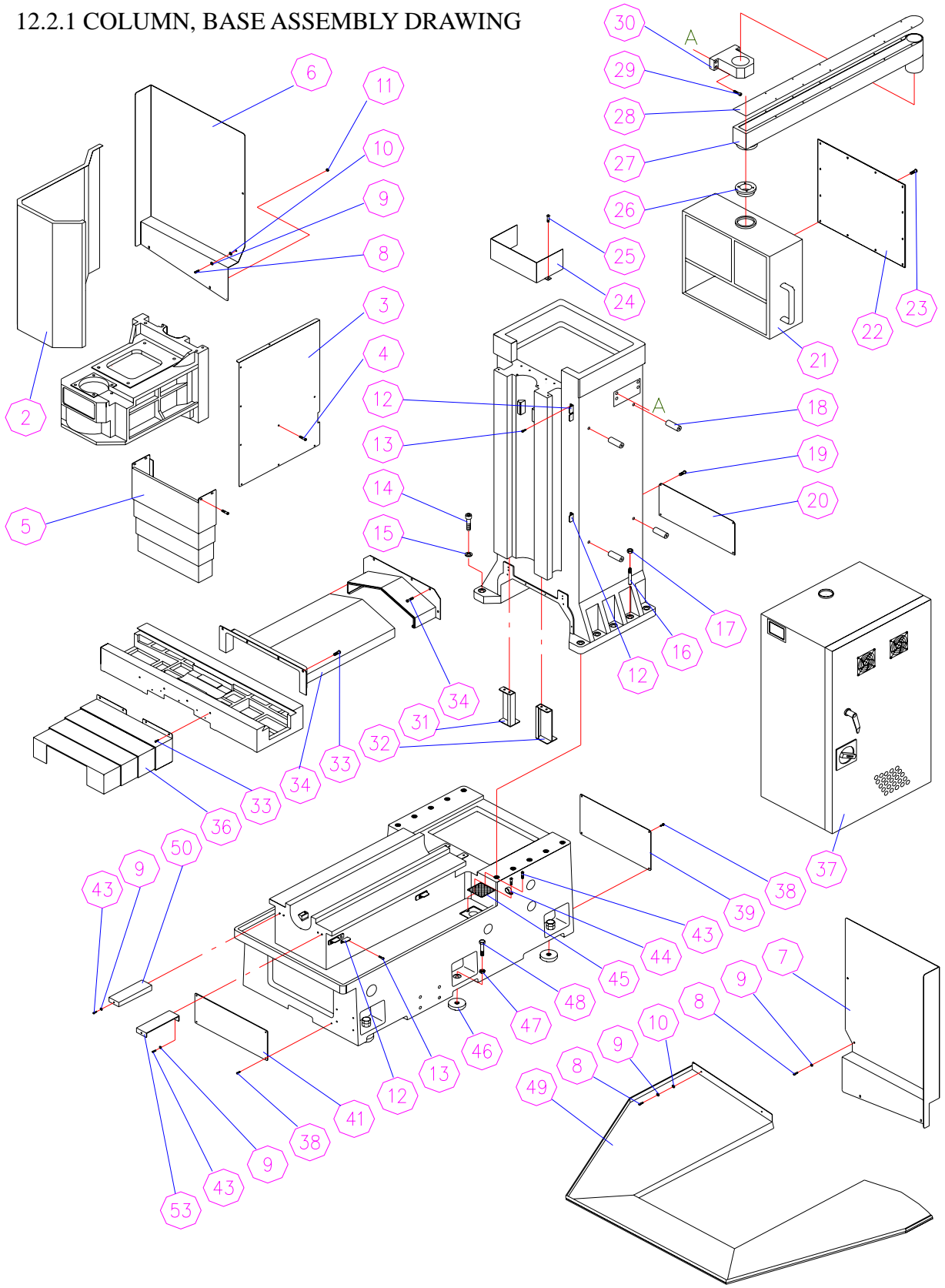


### 12.1.2 SPINDLE ASSEMBLY PARTS LIST

NO.	PART NO	DESCRIPTION	QTY
1.	YSF-2015	LOCK NUT	1
2.	P-25	O RING	1
3.	B5-HA13-00	SPACER	1
4.	B5-HA06-00	DISC SPRINGS	1
5.	B5-HA12-00	DRAWBAR	1
6.	ø7	STEEL BALL	1
7.	B5-HA15-00	FRONT BEARING CAP	1
8.	M6x20L	SOCKET CAP SCREW	14
9.		TOOL HOLDER (OPTION)	1
10.	B5-HA08-00	BEARING SPACER	1
11.	M6x6L	SET SCREW	1
12.	7012CYTDBC7P4	BALL BEARING	2
13.	B5-HA06-00	BEARING SPACER	1
14.	B5-HA07-00	BEARING SPACER	1
15.	B5-HA05-00	BEARING SPACER	1
16.	12x12x35L	KEY	1
17.	B5-HA02-00	SPINDLE	1
18.	B5-HA03-00	LOCK BLOCK	2
19.	M6x16L	SOCKET CAP SCREW	2
20.	B5-H043-00	LOCATE WHEEL CAP	1
21.	B5-H042-00	LOCATE WHEEL	1
22.	B5-HA04-00	LOCK NUT	1
23.	B5-HA10-00	HDT BELT GEAR 46T	1
24.	B5-HA17-00	SPINDLE SLEEVE	1
25.	M8x10L	SOCKET CAP SCREW	6
26.	7010CTYDBC7P4	BALL BEARING	2
27.	B5-HA09-00	BEARING SPACER	1
28.	B5-HA03-00	LOCK NUT	1

## 12.2 COLUMN, BASE ASSEMBLY

### 12.2.1 COLUMN, BASE ASSEMBLY DRAWING

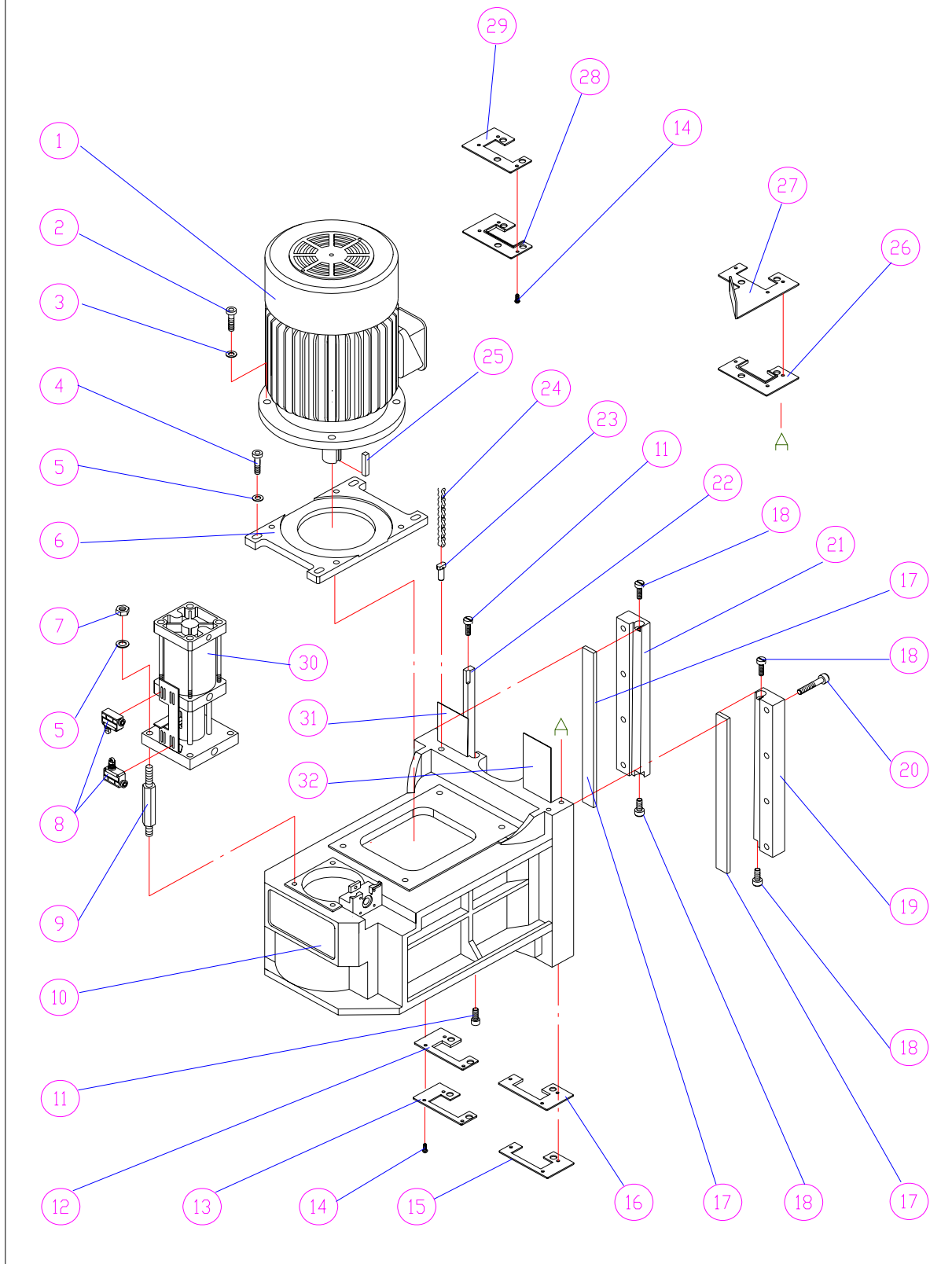


## 12.2.2 COLUMN, BASE ASSEMBLY PARTS LIST

NO.	PART NO	DESCRIPTION	QTY
2.	B5-A030-00	SPINDLE HEAD STOCK COVER	1
3.	B5-A031-00	SPINDLE HEAD STOCK COVER	1
4.	SB-M6x8L	HEX. SOCKET BUTTON HEAD SCREW	14
5.	B5-Z060-00	Z AXIS SLIDE COVER	1
6.	B5-A115-L0	CHIP GUARD	1
7.	B5-A115-R0	CHIP GUARD	1
8.	SC-M6x12L	SOCKET CAP SCREW	8
9.	WS - Ø6	SPRING WASHER	12
10.	WF-Ø6	FLAT WASHER	8
11.	HN-M6	NUT	4
12.	B5-X016-00	DOG	6
13.	SC-M5x8L	SOCKET CAP SCREW	12
14.	SC-M16x75L	SOCKET CAP SCREW	12
15.	WS - Ø16	SPRING WASHER	12
16.	DF-6004-00	TAPE PIN	2
17.	HN-M8	NUT	2
18.	B5-C151-00	SHAFT	4
19.	SB-M6x12L	ROUND HEAD SCREW	12
20.	B6-A008-00	COVER	1
21.	B5-S003-00	OPERATE CONSOLE	1
22.	B5-S002-00	OPERATE CONSOLE COVER	1
23.	M3x6L	HEX.SOCKET BUTTON HEAD SCREW	12
24.	B5-Z050-00	COVER	1
25.	SB-M6x8L	SOCKET CAP SCREW	2
26.	B5-S004-10	PIVOT	1
27.	B6-C144-00	BOOM	1
28.	B6-C140-00	BOOM COVER	1
29.	M6x30L	SOCKET CAP SCREW	4
30.	B6-C141-00	BRACKET	1
31.	B5-Z061-L0	Z AXIS SLIDE COVER BRACKET (LEFT)	1
32.	B5-Z061-R0	Z AXIS SLIDE COVER BRACKET (RIGHT)	1
33.	SB-M6x12L	HEX.SOCKET BUTTON HEAD SCREW	15
34.	B5-Y047-00	CHIP GUARD	1
36.	B6-Y045-00	CHIP GUARD	1
37.	B5-C148-00	ELECTRIC BOX	1
38.	SR-M6x12L	ROUND HEAD SCREW	8
39.	L9-6818-00	COVER	1
41.	B6-A007-00	COVER	1
43.	SB-M6x12L	SOCKET CAP SCREW	10
44.	ACC-6	CABLE CLAMPS	2
45.	K2-C130-00	STRAINER	2
46.	K5-C099-00	CHOCK	6
47.	HN-3/4"	NUT	6
48.	SH-3/4"x3"	ADJUST BOLT	6
49.	B5-A120-01	CHIP TRAY	1
50.	B5-Y046-L0	Y AXIS SLIDE COVER BRACKET (LEFT)	1
53.	B5-Y046-R0	Y AXIS SLIDE COVER BRACKET (RIGHT)	1

## 12.3 HEAD STOCK ASSEMBLY

### 12.3.1 HEAD STOCK ASSEMBLY DRAWING

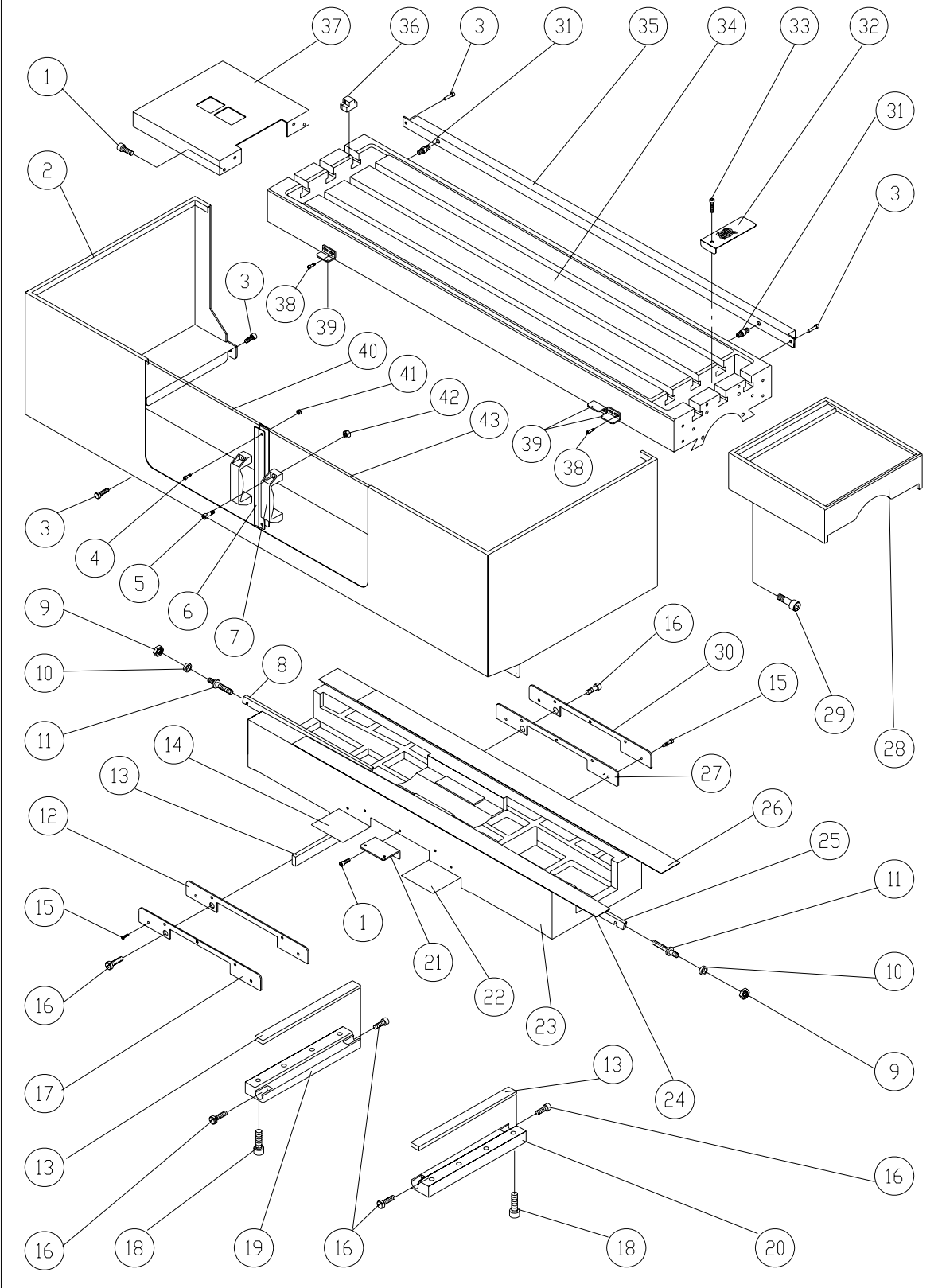


### 12.3.2 HEAD STOCK ASSEMBLY PARTS LIST

NO.	PART NO	DESCRIPTION	QTY
01.	7.5HP (5.5KW)	SPINDLE MOTOR	1
02.	M14x40L	SOCKET CAP SCREW	4
03.	M14	SPRING WASHER	4
04.	M12x40L	SOCKET CAP SCREW	4
05.	M2	SPRING WASHER	8
06.	B5-H049-00	MOTOR BASE	1
07.	M12	NUT	4
08.	SLI-1	LIMIT SWITCH	2
09.	B5-H046-00	LOCK BOLT	4
10.	B5-A002-00	SPINDLE HEAD STOCK CASTING	1
11.	K2-C041-A0	ADJUSTING SCREW	2
12.	B5-Z015-L0	WIPER	1
13.	B5-Z013-L0	WIPER HOLDER	1
14.	M6x12L	ROUND HEAD SCREW	12
15.	B5-Z013-R0	WIPER HOLDER	1
16.	B5-Z015-R0	WIPER HOLDER	1
17.	B6-Z024-00	GIB	2
18.	K2-C041-00	ADJUSTING SCREW	4
19.	B6-Z010-00	SLIDING RAIL	1
20.	M10x40L	SOCKET CAP SCREW	8
21.	B6-Z011-00	SLIDING RAIL	1
22.	B6-Z022-00	GIB	1
23.	B6-Z008-00	STUD	2
24.	RL-420-104L	CHAIN	1
25.		KEY	1
26.	B5-Z014-R0	WIPER	1
27.	B5-Z007-R0	WIPER HOLDER	1
28.	B5-Z014-L0	WIPER	1
29.	B5-Z007-L0	WIPER HOLDER	1
30.	φ50	PNEUMATIC BOOSTING CYLINDER	1
31.	B6-Z020-00	TURCITE	1
32.	B6-Z021-00	TURCITE	1

## 12.4 TABLE, SADDLE ASSEMBLY

### 12.4.1 TABLE, SADDLE PARTS LIST ASSEMBLY DRAWING

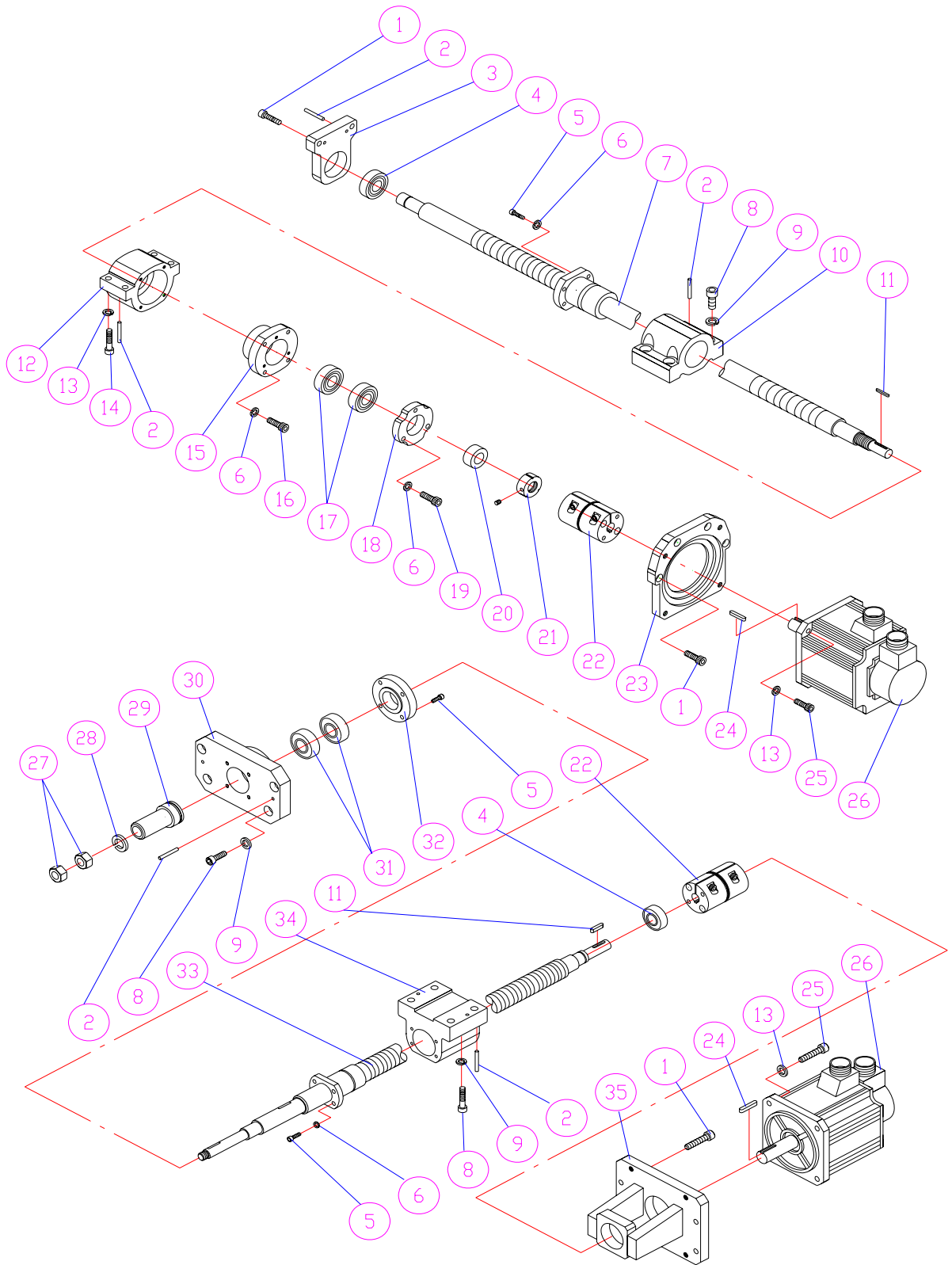


## 12.4.2 TABLE, SADDLE PARTS LIST

NO.	PART NO	DESCRIPTION	QTY
1.	M6x8L	SOCKET CAP SCREW	4
2.	B5-C160-01	TABLE GUARD	1
3.	M6x8L	HEX. SOCKET BUTTON HEAD SCREW	9
4.	M5x12L	HEX. SOCKET BUTTON HEAD SCREW	3
5.	M8x20L	SOCKET CAP SCREW	4
6.	B5-C163-00	PLATE	2
7.	B6-C164-00	DOOR HANDLE	2
8.	K2-C043-00	TABLE/SADDLE GIB	1
9.	M10	NUT	2
10.	2V-X047-00	WASHER	2
11.	2V-X046-00	ADJUST SCREW	2
12.	K5-C044-00	WIPER	1
13.	B6-Z024-00	GIB	3
14.	K5-C138-00	TURCITE	1
15.	M5x10L	ROUND HEAD SCREW	10
16.	K2-C041-00	GIB ADJ-SCREW	6
17.	K5-C050-00	WIPER HOLDER	1
18.	M10x35L	SOCKET CAP SCREW	8
19.	K5-C115-00	SLIDING RAIL	1
20.	K5-C116-00	SLIDING RAIL	1
21.	B5-X015-00	X AXIS LIMIT SWITCH BASE	1
22.	K5-C139-00	TURCITE	1
23.	B4-X002-00	SADDLE	1
24.	B4-C136-00	TURCITE	1
25.	B4-C043-00	GIB	1
26.	B4-C137-00	TURCITE	1
27.	K5-C044-10	WIPER	1
28.	B4-X013-00	BRACKET	1
29.	M10x30L	SOCKET CAP SCREW	4
30.	K5-C050-10	WIPER HOLDER	1
31.	1/2"X5/8"	MALE STUD CONNECTOR	2
32.	B4-X040-00	STRAINER	2
33.	M6X30L	SOCKET CAP SCREW	2
34.	B5-X002-00	WORK TABLE	1
35.	B5-X060-01	DRAINAGE DEVICE	1
36.	K2-D029-00	CHOCK PLUG	6
37.	B5-X007-00	X AXIS MOTOR COVER	1
38.	M5x8L	SOCKET CAP SCREW	6
39.	B5-X016-00	DOG & O.T	3
40.	B5-C161-00	ACRYLIC DOOR (LEFT)	1
41.	M5	NUT	3
42.	M8	NUT	4
43.	B5-C162-00	ACRYLIC DOOR (RIGHT)	1

## 12.5 X, Y AXIS ASSEMBLY

### 12.5.1 X, Y AXIS ASSEMBLY DRAWING

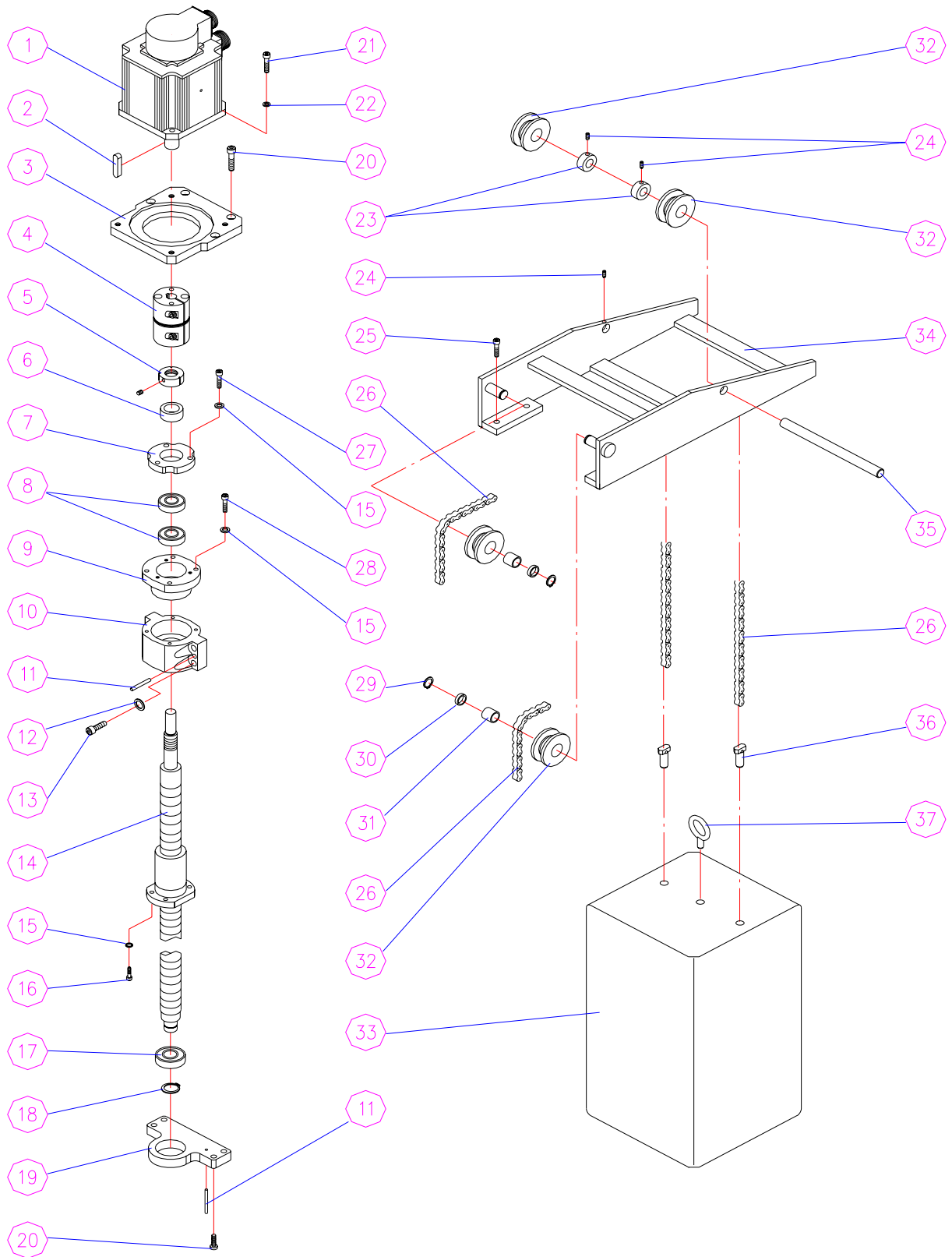


### 12.5.2 X, Y AXIS ASSEMBLY PARTS LIST

NO.	PART NO	DESCRIPTION	QTY
1.	SC-M8x30L	SOCKET CAP SCREW	10
2.	TP-#4x38L	TAPER PIN	10
3.	B5-X011-00	BEARING BRACKET	1
4.	6204ZZ	BALL BEARING	2
5.	SC-M6x20L	SOCKET CAP SCREW	12
6.	WS- $\phi$ 6	SPRING WASHER	12
7.	B5-X017-M3	X AXIS BALL SCREW	1
8.	M10x40L	SOCKET CAP SCREW	12
9.	WS- $\phi$ 10	SPRING WASHER	12
10.	2V-X003-A0	FEED NUT BRACKET	1
11.	3/16"x3/16"x25L	KEY	2
12.	B5-Z001-00	BRACKET	1
13.	WS- $\phi$ 8	SPRING WASHER	12
14.	M8x45L	SOCKET CAP SCREW	4
15.	B5-Z025-00	BEARING BRACKET	1
16.	M6x35L	SOCKET CAP SCREW	4
17.	BSD2047CGA	BALL BEARING	2
18.	B5-Z002-00	BEARING CAP	1
19.	SC-M6x25L	SOCKET CAP SCREW	3
20.	B5-Z026-00	SPACER	1
21.	YSF-2015	LOCK NUT	1
22.	B5-X054-00	COUPLING	2
23.	B5-X025-F0	MOTOR BASE	1
24.		KEY	2
25.	M8x25L	SOCKET CAP SCREW	8
26.		SERVO MOTOR	2
27.	5/8"	NUT	2
28.	5/8"	WASHER	1
29.	B6-YA08-B0	CONNECT SHAFT	1
30.	B5-YA07-00	BRACKET	1
31.	20TA04DB	BALL BEARING	2
32.	B4-YA11-00	BEARING CAP	1
33.	B5-Y000-M1	Y AXIS BALL SCREW	1
34.	B6-Y080-00	Y AXIS FEED NUT BRACKET	1
35.	B5-YA04-F0	MOTOR BASE	1

## 12.6 Z AXIS ASSEMBLY

### 12.6.1 Z AXIS ASSEMBLY DRAWING

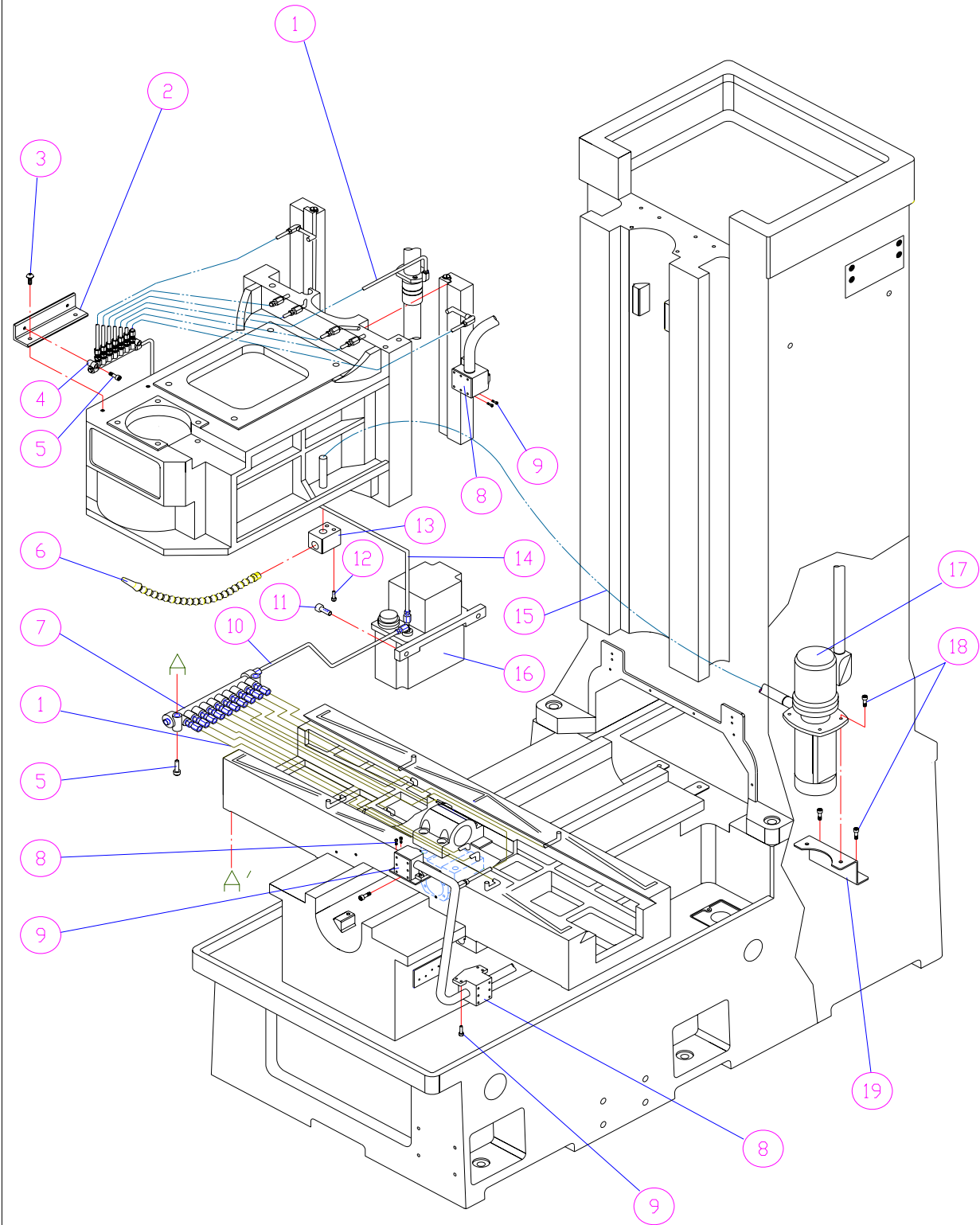


## 12.6.2 Z AXIS ASSEMBLY PARTS LIST

NO.	PART NO	DESCRIPTION	QTY
1.		SERVO MOTOR	1
2.		KEY	1
3.	B5-Z034-F0	MOTOR BASE	1
4.	B5-X054-00	COUPLING	1
5.	YSF-2015	LOCK NUT	1
6.	B5-Z026-00	SPACER	1
7.	B5-Z002-00	BEARING CAP	1
8.	BSD2047CGA	BALL BEARING	2
9.	B5-Z025-00	BEARING BRACKET	1
10.	B5-Z001-00	BRACKET	1
11.	TP-#4x38L	TAPER PIN	2
12.	WS-Ø8	SPRING WASHER	4
13.	M8x45L	SOCKET CAP SCREW	4
14.	B5-Z000-M2	Z AXIS BALL SCREW	1
15.	WS-Ø6	SPRING WASHER	11
16.	M6x20L	SOCKET CAP SCREW	4
17.	6204ZZ	BALL BEARING	1
18.	S-19	SNAP PIN	1
19.	B5-Z003-00	BEARING BRACKET	1
20.	M8x30L	SOCKET CAP SCREW	8
21.	M8x25L	SOCKET CAP SCREW	4
22.	WS-Ø8	SPRING WASHER	4
23.	CF-6107-00	LOCK SPACER	2
24.	SC-M6x8L	SET SCREW	3
25.	M8x40L	SOCKET CAP SCREW	4
26.	RL-420-104L	CHAIN	2
27.	SC-M6x25L	SOCKET CAP SCREW	3
28.	SC-M6x35L	SOCKET CAP SCREW	4
29.	S-16	SNAP RING	2
30.	B6-Z039-00	SPACER	2
31.	BA-1012Z	BEARING	2
32.	V5-Z037-00	BALANCING PULLEY	4
33.	B6-A005-00	BALANCING	1
34.	B5-Z029-03	BALANCING BASE	1
35.	B6-Z038-00	BALANCING BASE	1
36.	B6-Z008-00	BALANCILG SCREW	2
37.	HB-M8	HOOK BOLT	1

## 12.7 LUBRICATION, COOLANT ASSEMBLY

### 12.7.1 LUBRICATION, COOLANT ASSEMBLY DRAWING



## 12.7.2 LUBRICATION, COOLANT ASSEMBLY PARTS LIST

NO.	PART NO	DESCRIPTION	QTY
1.	LT-ø4	LUBRICATING OIL TUBING	17
2.	B5-H060-00	OIL DISTRIBUTE BRACKET	1
3.	M6x12L	SOCKET CAP SCREW	2
4.	OD-9	OIL DISTRIBUTE	1
5.	M6x25L	SOCKET CAP SCREW	4
6.	ø3/8"x16"	COOLANT TUBES	1
7.	OD-A9P	OIL DISTRIBUTE	1
8.	M5x16L	SOCKET CAP SCREW	4
9.	LR50067	LIMIT SWITCH	3
10.	LSø4x1M	LUBRICATING STRING	1
11.	M6x20L	SOCKET CAP SCREW	2
12.	M6x40L	SOCKET CAP SCREW	2
13.	K2-C020-00	COOLANT TUBES BRACKET	1
14.	LSø4x1.4M	LUBRICATING STRING	1
15.	SCH-3/8"x160"	STAINLESS STEEL COVEYING HOSES	1
16.	CSED	ELECTRONIC LUBRICATION	1
17.	13L-1/8HP	COOLANT PUMP	1
18.	M6x12L	SOCKET CAP SCREW	4
19.	2E-A010-00	COOLANT PUMP BASE	1