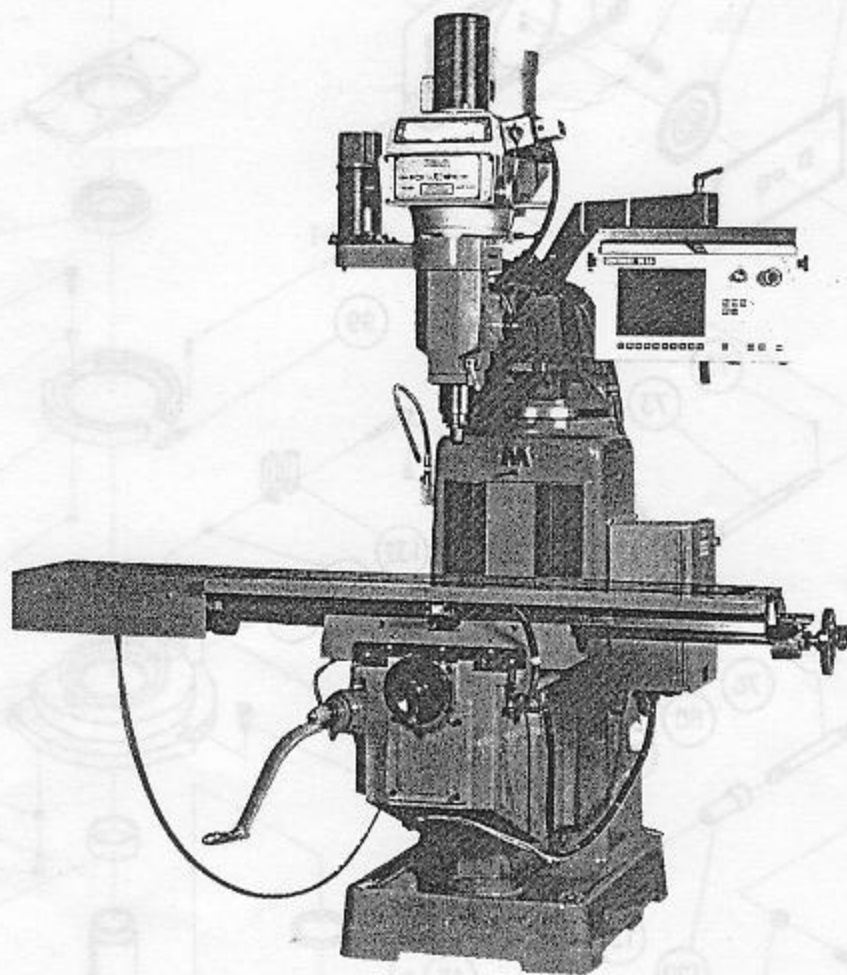


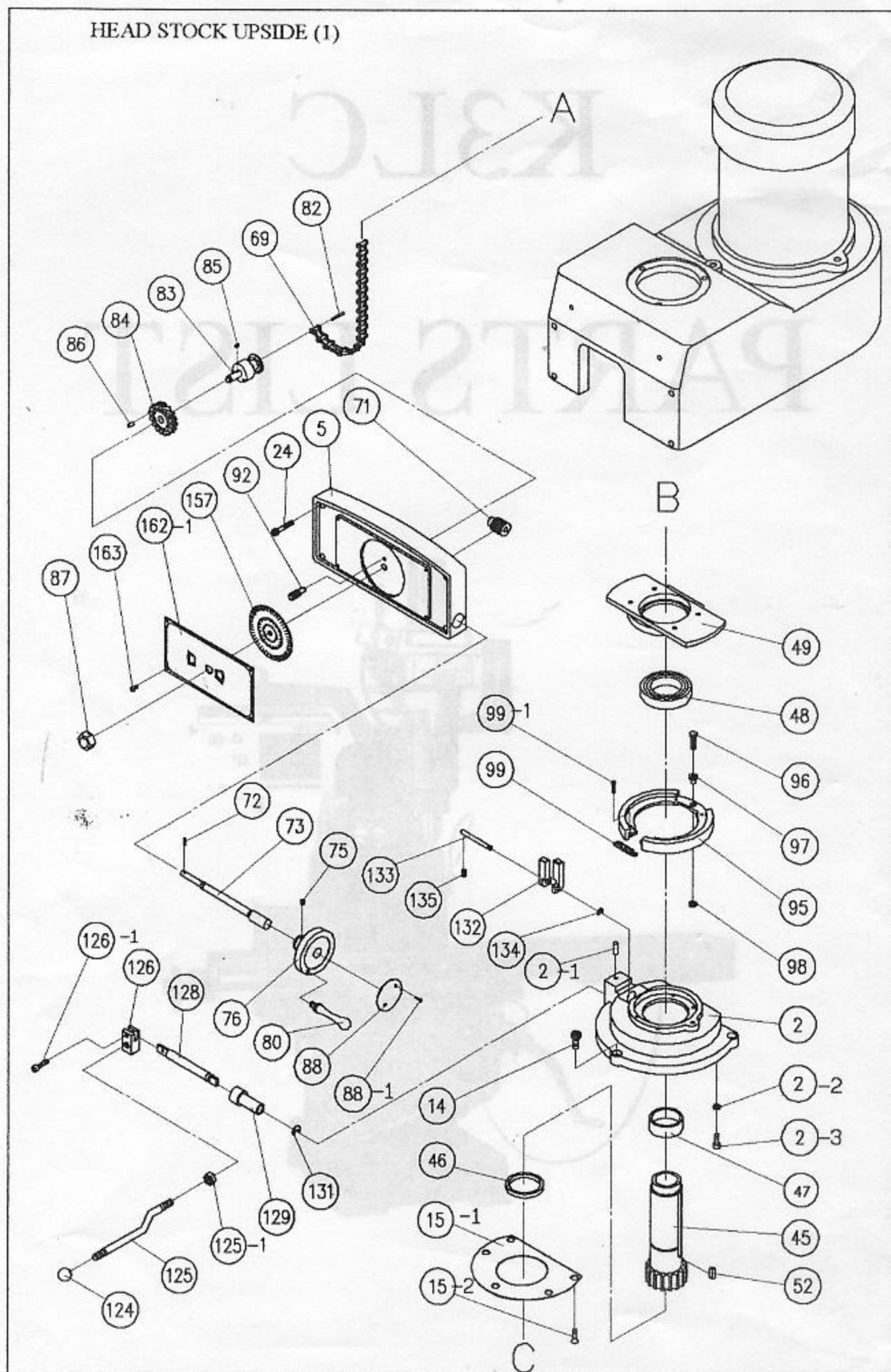
K3LC

PARTS LIST



PARTS LIST

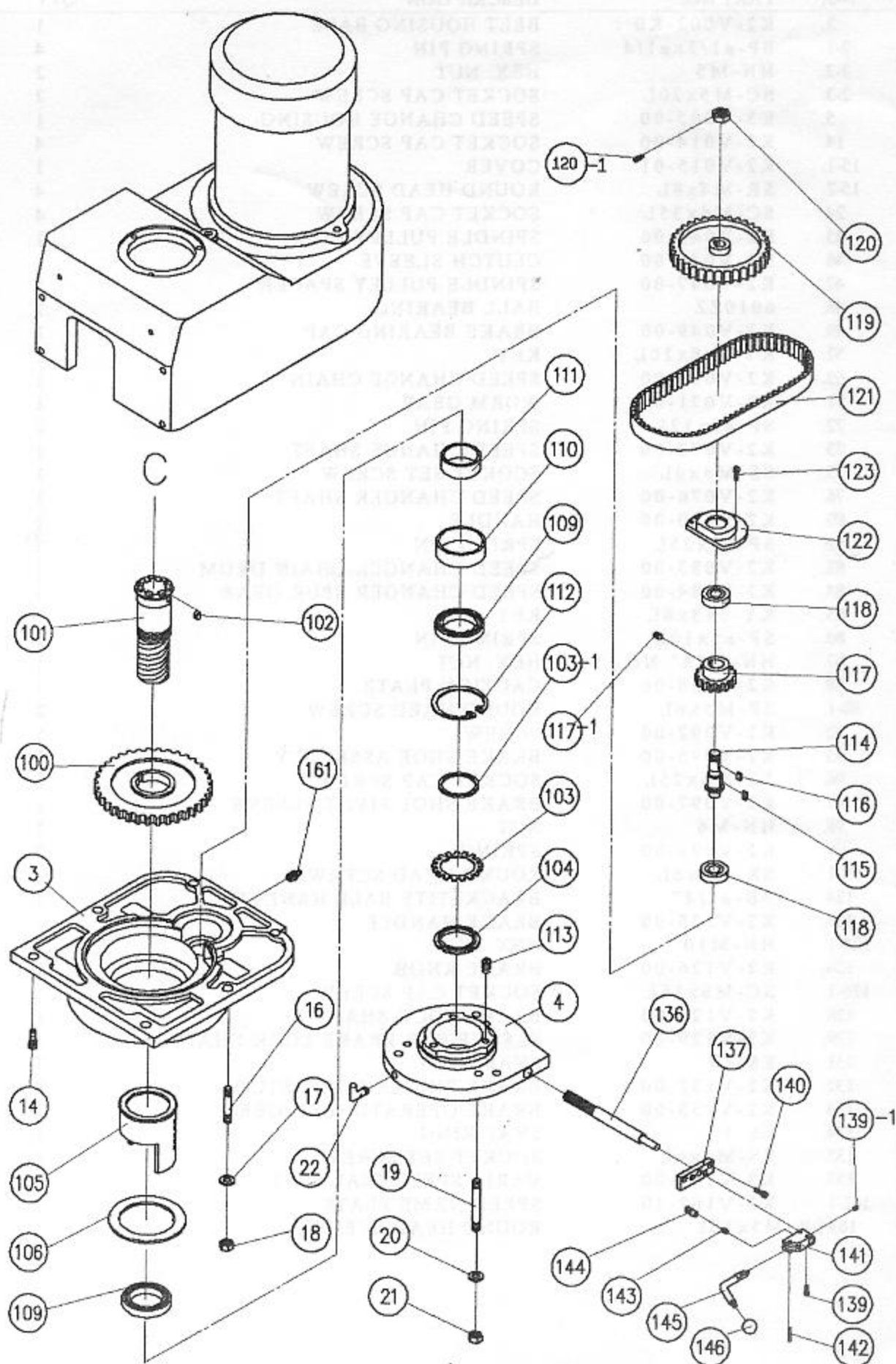
HEAD STOCK UPSIDE (1)



HEAD STOCK UPSIDE (1) PARTS LIST

NO.	PART NO.	DESCRIPTION	QTY
2.	K2-V002-K0	BELT HOUSING BASE	1
2-1.	SP- $\phi 1/2 \times \phi 1/4$	SPRING PIN	4
2-2.	HN-M5	HEX. NUT	2
2-3.	SC-M5x20L	SOCKET CAP SCREW	2
5.	K3-V005-00	SPEED CHANGE HOUSING	1
14.	K2-V014-00	SOCKET CAP SCREW	4
15-1.	K2-V015-01	COVER	1
15-2.	SR-M4x8L	ROUND HEAD SCREW	4
24.	SC-M6x35L	SOCKET CAP SCREW	4
45.	K2-V045-00	SPINDLE PULLEY HUB	1
46.	K2-V046-00	CLUTCH SLEEVE	1
47.	K2-V047-00	SPINDLE PULLEY SPACER	1
48.	6010ZZ	BALL BEARING	1
49.	K2-V049-00	BRAKE BEARING CAP	1
52.	KY-8x8x20L	KEY	1
69.	K2-V069-00	SPEED CHANGE CHAIN	1
71.	K2-V071-00	WORM GEAR	1
72.	SP- $\phi 3 \times 12L$	SPRING PIN	1
73.	K2-V073-00	SPEED CHANGE SHAFT	1
75.	SS-M6x6L	SOCKET SET SCREW	1
76.	K2-V076-00	SPEED CHANGER SHAFT	1
80.	K2-V080-00	HANDLE	1
82.	SP- $\phi 3 \times 25L$	SPRING PIN	1
83.	K2-V083-00	SPEED CHANGER CHAIN DRUM	1
84.	K2-V084-00	SPEED CHANGER SPUR GEAR	1
85.	KY-3x3x8L	KEY	1
86.	SP- $\phi 5 \times 10L$	SPRING PIN	1
87.	HN-5/16" NC	HEX. NUT	1
88.	K2-V088-00	CAUTION PLATE	1
88-1.	SP-M5x6L	ROUND HEAD SCREW	2
92.	K2-V092-00	SCREW	1
95.	K2-V095-00	BRAKE SHOE ASSEMBLY	1
96.	SC-M6x25L	SOCKET CAP SCREW	1
97.	K2-V097-00	BRAKE SHOE PIVOT SLEEVE	1
98.	HN-M6	NUT	1
99.	K2-V099-00	SPRING	2
99-1.	SR-M4x6L	ROUND HEAD SCREW	4
124.	BB- $\phi 1/4$ "	BRACKETITE BALL HANDLE	1
125.	K2-V125-00	BRAKE HANDLE	1
125-1.	HN-M10	HEX. NUT	1
126.	K2-V126-00	BRAKE KNOB	1
126-1.	SC-M6x16L	SOCKET CAP SCREW	1
128.	K2-V128-00	BRAKE LOCK SHAFT	1
129.	K2-V129-00	SLEEVE FOR BRAKE LOCK SHAFT	1
131.	ES-10	SNAP RING	1
132.	K2-V132-00	BRAKE FINGER PIVOT STUD	2
133.	K2-V133-00	BRAKE OPERATING FINGER	1
134.	ES-5	SNAP RING	1
135.	SS-M6x6L	SOCKET SET SCREW	2
157.	K3-V157-00	VARI - SPEED DIAL 60HZ	1
162-1.	K3-V162-10	SPEED NAME PLATE	1
163.SR-M5x10L		ROUND HEAD SCREW	4

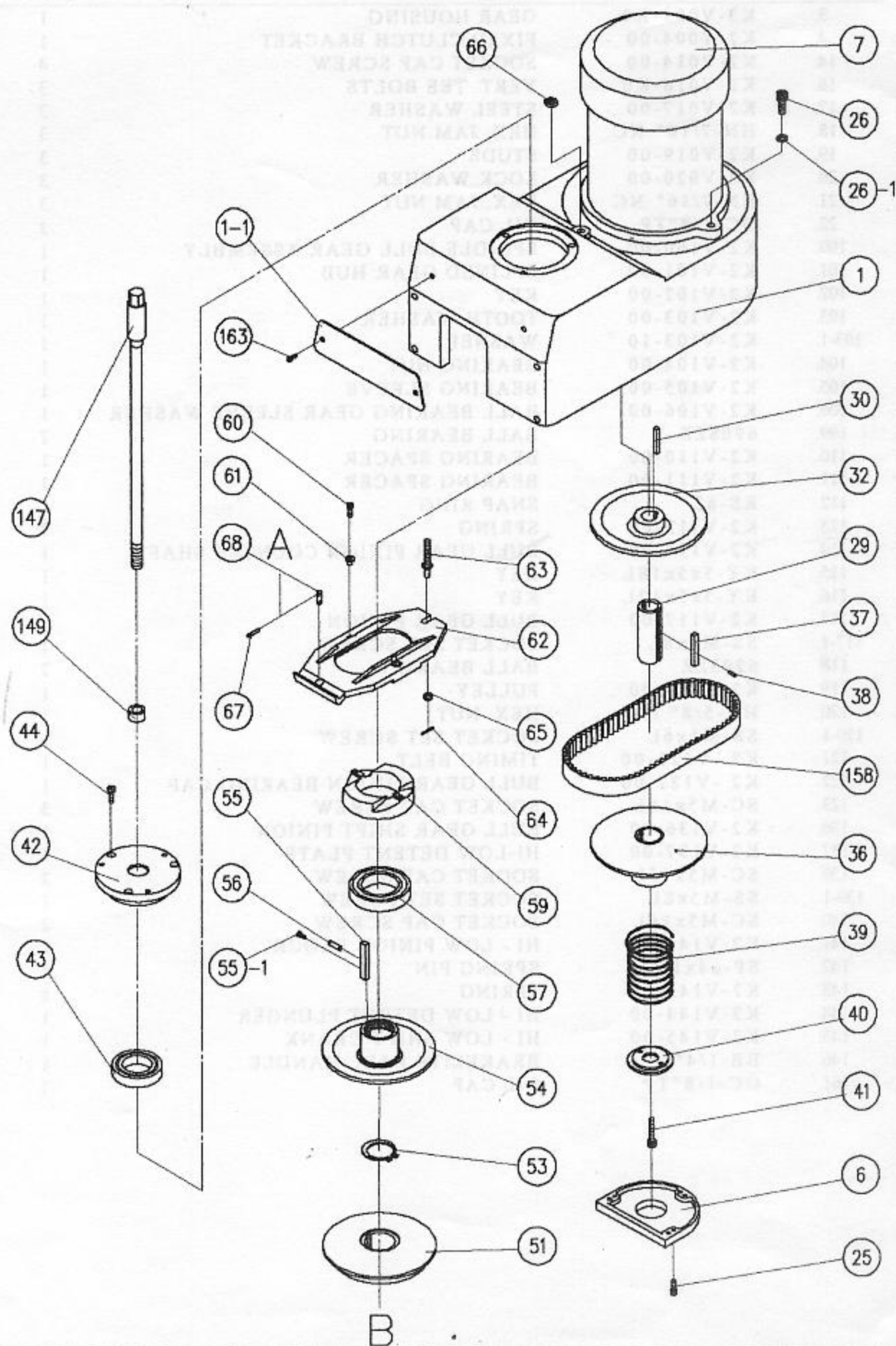
HEAD STOCK UPSIDE (2)



HEAD STOCK UPSIDE (2) PARTS LIST

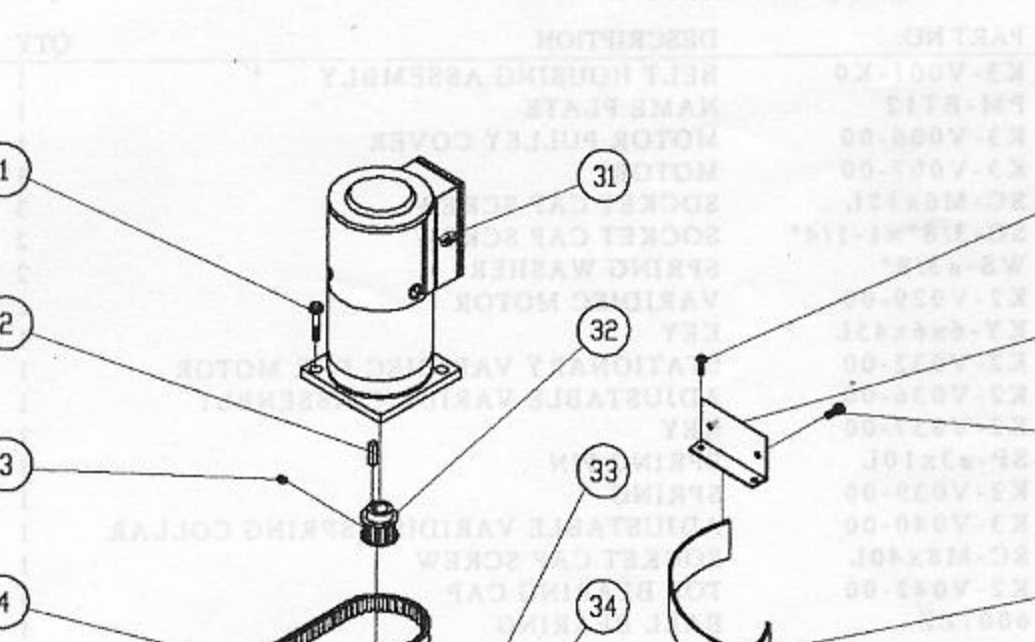
NO.	PART NO.	DESCRIPTION	QTY
3.	K3-V003-K0	GEAR HOUSING	1
4.	K2-V004-00	FIXED CLUTCH BRACKET	1
14.	K2-V014-00	SOCKET CAP SCREW	4
16.	K2-V016-K0	VERT. TEE BOLTS	3
17.	K2-V017-00	STEEL WASHER	3
18.	HN-7/16" NC	HEX. JAM NUT	3
19.	K2-V019-00	STUDS	3
20.	K2-V020-00	LOCK WASHER	3
21.	HN-7/16" NC	HEX. JAM NUT	3
22.	OC-1/8"TP	OIL CAP	2
100.	K2-V100-00	SPINDLE BULL GEAR ASSEMBLY	1
101.	K2-V101-00	SPLINED GEAR HUB	1
102.	K2-V102-00	KEY	1
103.	K2-V103-00	TOOTH WASHER	1
103-1.	K2-V103-10	WASHER	1
104.	K2-V104-00	BEARING NUT	1
105.	K2-V105-00	BEARING SLEEVE	1
106.	K2-V106-00	BALL BEARING GEAR SLEEVE WASHER	1
109.	6908ZZ	BALL BEARING	2
110.	K2-V110-00	BEARING SPACER	1
111.	K2-V111-00	BEARING SPACER	1
112.	RS-62	SNAP RING	1
113.	K2-V113-00	SPRING	1
114.	K2-V114-00	BULL GEAR PINION COUNTER SHAFT	1
115.	KY-5x5x18L	KEY	1
116.	KY-5x5x12L	KEY	1
117.	K2-V117-00	BULL GEAR PINION	1
117-1.	SS-M8x8L	SOCKET SET SCREW	1
118.	6203ZZ	BALL BEARING	2
119.	K2-V119-00	PULLEY	1
120.	HN-5/8" NC	HEX. NUT	1
120-1.	SS-M5x6L	SOCKET SET SCREW	1
121.	K2-V121-00	TIMING BELT	1
122.	K2-V122-00	BULL GEAR PINION BEARING CAP	1
123.	SC-M5x15L	SOCKET CAP SCREW	3
136.	K2-V136-00	BULL GEAR SHIFT PINION	1
137.	K2-V137-00	HI-LOW DETENT PLATE	1
139.	SC-M5x15L	SOCKET CAP SCREW	2
139-1.	SS-M5x8L	SOCKET SET SCREW	1
140.	SC-M5x16L	SOCKET CAP SCREW	2
141.	K2-V141-00	HI - LOW PINION BLOCK	1
142.	SP-ø4x16L	SPRING PIN	1
143.	K2-V143-00	SPRING	1
144.	K2-V144-00	HI - LOW DETENT PLUNGER	1
145.	K2-V145-00	HI - LOW SHIFT CRANK	1
146.	BB-1/4"	BRAKELITE BALL HANDLE	1
161.	OC-1/8"TP	OIL CAP	1

HEAD STOCK UPSIDE (3)



HEAD STOCK UPSIDE (3) PARTS LIST

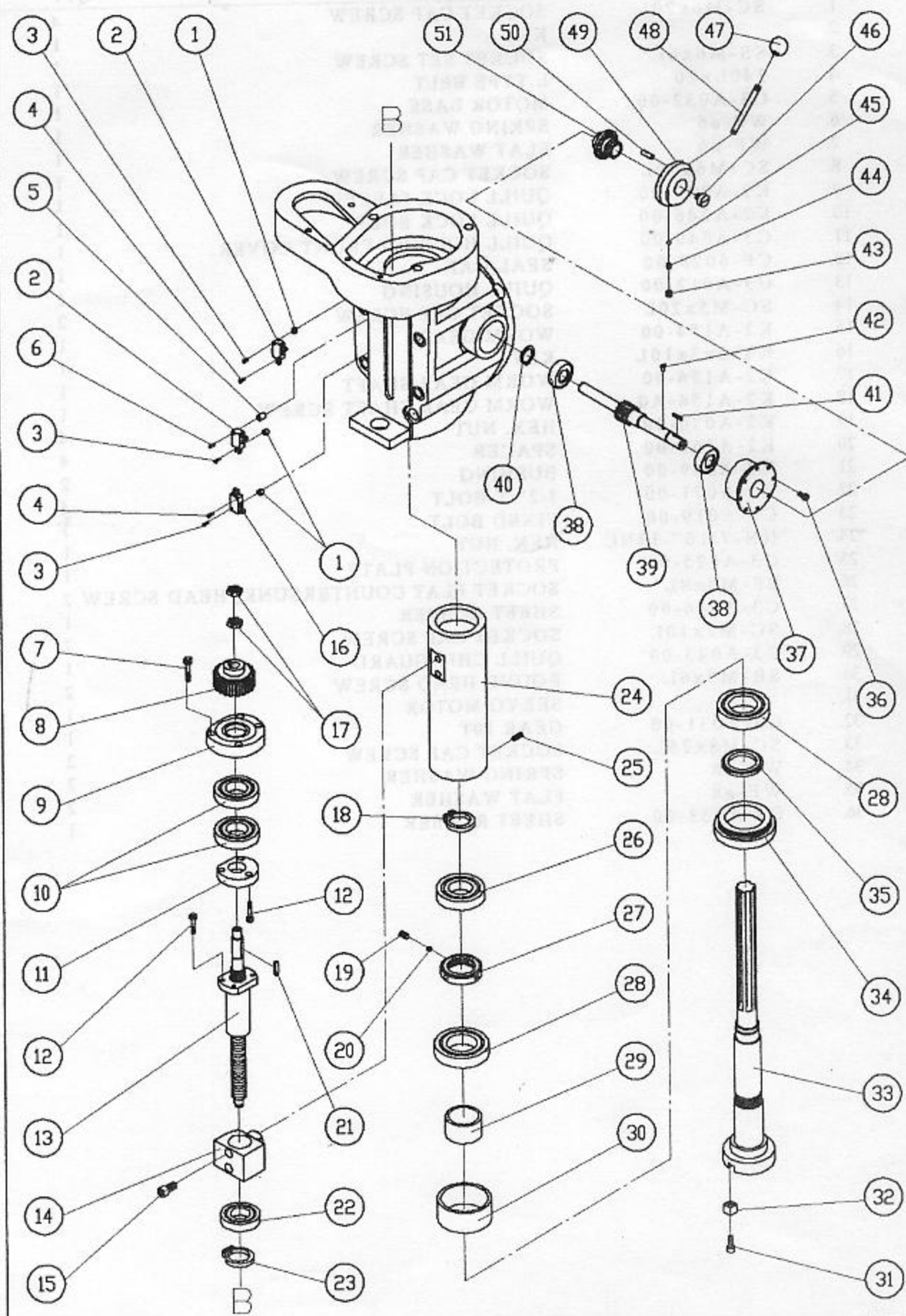
NO.	PART NO.	DESCRIPTION	QTY
1.	K3-V001-K0	BELT HOUSING ASSEMBLY	1
1-1.	PM-BT12	NAME PLATE	1
6.	K3-V006-00	MOTOR PULLEY COVER	1
7.	K3-V007-00	MOTOR	1
25.	SC-M6x12L	SOCKET CAP SCREW	3
26.	SC-3/8"x1-1/4"	SOCKET CAP SCREW	2
26-1.	WS-ø3/8"	SPRING WASHER	2
29.	K2-V029-00	VARIDISC MOTOR	1
30.	KY-6x6x45L	KEY	1
32.	K2-V032-00	STATIONARY VARIDISC FOR MOTOR	1
36.	K2-V036-00	ADJUSTABLE VARIDISC ASSEMBLY	1
37.	K2-V037-00	KEY	1
38.	SP-ø3x10L	SPRING PIN	1
39.	K2-V039-00	SPRING	1
40.	K3-V040-00	ADJUSTABLE VARIDISC SPRING COLLAR	1
41.	SC-M8x40L	SOCKET CAP SCREW	1
42.	K2-V042-00	TOP BEARING CAP	1
43.	6007ZZ	BALL BEARING	1
44.	SC-M6x20L	SOCKET CAP SCREW	3
51.	K2-V051-00	STATIONARY DRIVEN VARIDISC	1
53.	SE-40	SNAP RING	1
54.	K2-V054-00	ADJUSTABLE DRIVEN VARIDISC	1
55.	K2-V055-00	KEY	1
55-1.	SC-M4x8L	SOCKET CAP SCREW	1
56.	SP-ø3x8L	SPRING PIN	1
57.	6011ZZ	BALL BEARING	1
59.	K2-V059-00	SPINDLE PULLEY BEARING SLIDING HOUSING	1
60.	SC-M5x16L	SOCKET CAP SCREW	2
61.	K2-V061-00	PIVOT SLEEVE	2
62.	K2-V062-00	SPEED CHANGE PLATE	1
63.	K2-V063-00	SPEED CHANGE PLATE PIVOT STUD	1
64.	K2-V064-00	COTTON PIN	1
65.	WS-ø5/16"	SPRING WASHER	1
66.	K2-V066-00	HEX. JAM SCREW	1
67.	SP-ø4x22L	SPRING PIN	1
68.	K2-V068-00	SPEED CHANGE CHAIN STUD	1
147.	K2-V147-00	DRAWBAR	1
149.	K2-V149-00	DRAWBAR WASHER	1
158.	K2-V158-00	BELT	1
163.	SR-M5x8L	ROUND HEAD SCREW	2



HEAD STOCK INFRASTRUCTURE (1) PARTS LIST

NO.	PART NO.	DESCRIPTION	QTY
1.	SC-M6x20L	SOCKET CAP SCREW	4
2.		KEY	1
3.	SS-M6x6L	SOCKET SET SCREW	1
4.	240Lx20	L TYPE BELT	1
5.	C3-A032-00	MOTOR BASE	1
6.	WS-ø6	SPRING WASHER	1
7.	WF-ø6	FLAT WASHER	1
8.	SC-M6x70L	SOCKET CAP SCREW	1
9.	K2-A247-00	QUILL LOCK SLEEVE	1
10.	K2-A246-00	QUILL LOCK BOLT	1
11.	C3-A040-00	QUILL HOUSING FRONT COVER	1
12.	CF-6028-00	SEAL CAP	1
13.	C3-A012-00	QUILL HOUSING	1
14.	SC-M5x20L	SOCKET CAP SCREW	2
15.	K2-A154-00	WORM GEAR	1
16.	KY-3x3x10L	KEY	1
17.	K2-A156-00	WORM GEAR SHAFT	1
18.	K2-A156-A0	WORM GEAR SHAFT SCREW	1
19.	K2-A070-00	HEX. NUT	4
20.	K2-A266-00	SPACER	4
21.	K2-A069-00	BUSHING	2
22.	K2-A071-00	1/2"-T-BOLT	4
23.	C3-A019-00	FIXED BOLT	1
24.	HN-7/16"-14NC	HEX. NUT	1
25.	C3-A025-00	PROTECTION PLATE	1
26.	SF-M4x8L	SOCKET FLAT COUNTERSUNK, HEAD SCREW	2
27.	C3-A046-00	SHEET RUBBER	1
28.	SC-M5x10L	SOCKET CAP SCREW	2
29.	C3-A045-00	QUILL CHIP GUARD	1
30.	SR-M5x6L	ROUND HEAD SCREW	2
31.		SERVO MOTOR	1
32.	C3-A031-00	GEAR 10T	1
33.	SC-M8x25L	SOCKET CAP SCREW	2
34.	WS-ø8	SPRING WASHER	2
35.	WF-ø8	FLAT WASHER	2
36.	C3-A033-00	SHEET RUBBER	1

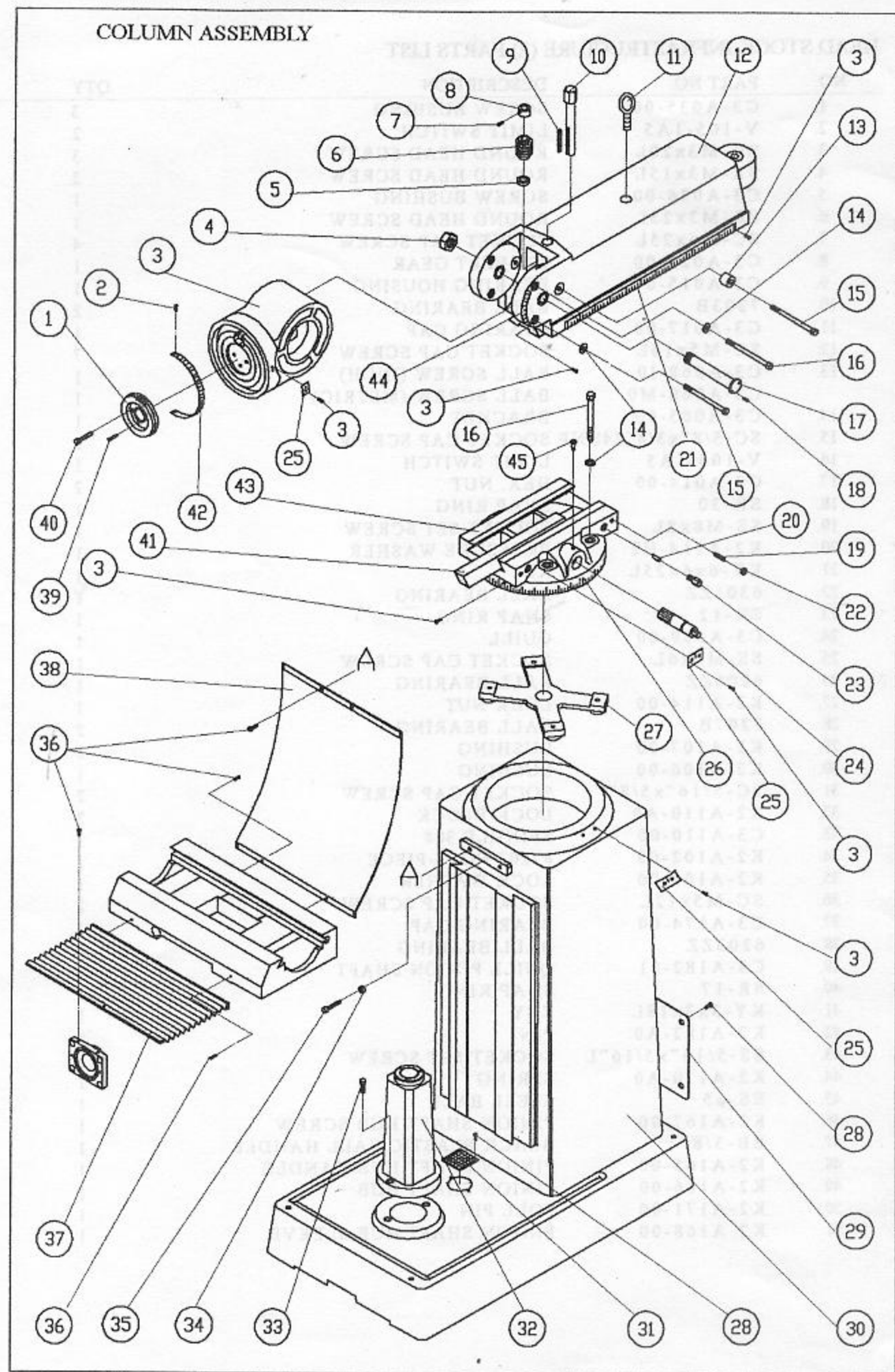
HEAD STOCK INFRASTRUCTURE (2)



HEAD STOCK INFRASTRUCTURE (2) PARTS LIST

NO.	PART NO.	DESCRIPTION	QTY
1.	C3-A035-00	SCREW BUSHING	3
2.	V-105-1A5	LIMIT SWITCH	2
3.	SR-M3x20L	ROUND HEAD SCREW	3
4.	SR-M3x15L	ROUND HEAD SCREW	2
5.	C3-A036-00	SCREW BUSHING	1
6.	SR-M3x25L	ROUND HEAD SCREW	1
7.	SC-M6x25L	SOCKET CAP SCREW	4
8.	C3-A021-00	20T BELT GEAR	1
9.	C3-A015-00	BEARING HOUSING	1
10.	7203B	BALL BEARING	2
11.	C3-A017-00	BEARING CAP	1
12.	SC-M5x16L	SOCKET CAP SCREW	7
13.	C3-A068-10	BALL SCREW (INCH)	1
	C3-A068-M0	BALL SCREW (METRIC)	1
14.	C3-A065-00	BRACKET	1
15.	SC-3/8"x3/4"24UNF	SOCKET CAP SCREW	2
16.	V-106-1A5	LIMIT SWITCH	1
17.	C3-A014-00	HEX. NUT	2
18.	SR-30	SNAP RING	1
19.	SS-M8x8L	SOCKET SET SCREW	1
20.	K2-A114-H2	PRESSURE WASHER	1
21.	KY-6x6x25L	KEY	1
22.	6301ZZ	BALL BEARING	1
23.	SR-12	SNAP RING	1
24.	C3-A109-00	QUILL	1
25.	SS-M5x6L	SOCKET CAP SCREW	1
26.	6206ZZ	BALL BEARING	1
27.	K2-A114-00	LOCK NUT	1
28.	7207B	BALL BEARING	2
29.	K2-A107-00	BUSHING	1
30.	K2-A106-00	BUSHING	1
31.	SC-5/16"x5/8"	SOCKET CAP SCREW	2
32.	K2-A110-A0	LOCK BLOCK	2
33.	C3-A110-00	SPINDLE 30#	1
34.	K2-A102-00	#7207 NOSE-PIECE	1
35.	K2-A103-00	LOCK WASHER	1
36.	SC-M5x12L	SOCKET CAP SCREW	2
37.	C3-A174-00	BEARING CAP	1
38.	6203ZZ	BALL BEARING	2
39.	C3-A182-01	QUILL PINION SHAFT	1
40.	SR-17	SNAP RING	1
41.	KY-3x3x18L	KEY	1
42.	K2-A182-A0	PIN	1
43.	SS-5/16"x5/16"L	SOCKET SET SCREW	1
44.	K2-A170-A0	SPRING	1
45.	BS-ø5	STEEL BALL	1
46.	K2-A167-00	PINION SHAFT HUB SCREW	1
47.	BB-3/8"	BLACK PLASTIC BALL HANDLE	1
48.	K2-A165-00	PINION SHAFT HUB HANDLE	1
49.	K2-A166-00	PINION SHAFT HUB	1
50.	K2-A171-00	POLL PIN	1
51.	K2-A168-00	PINION SHAFT HUB SLEEVE	1

COLUMN ASSEMBLY

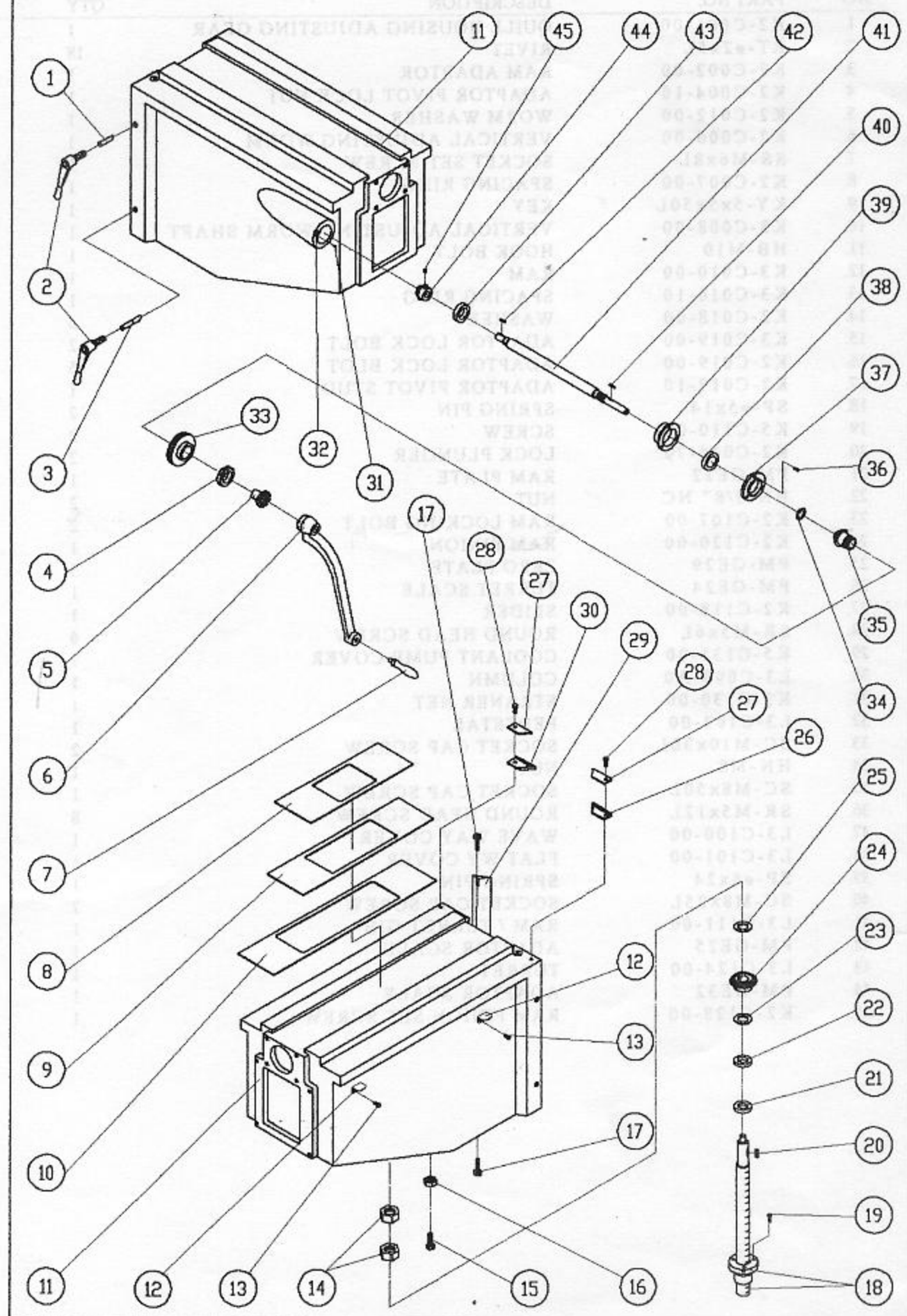


COLUMN ASSEMBLY PARTS LIST

YRMM32A 33M

NO	PART NO.	DESCRIPTION	QTY
1.	K2-C001-00	QUILL HOUSING ADJUSTING GEAR	1
2.	RT-ø2x5L	RIVET	18
3.	K2-C002-00	RAM ADAPTOR	1
4.	K2-C004-10	ADAPTOR PIVOT LOCK NUT	1
5.	K2-C012-00	WORM WASHER	1
6.	K2-C006-00	VERTICAL ADJUSTING WORM	1
7.	SS-M6x8L	SOCKET SET SCREW	1
8.	K2-C007-00	SPACING RING	1
9.	KY-5x5x50L	KEY	1
10.	K3-C008-00	VERTICAL ADJUSTING WORM SHAFT	1
11.	HB-M10	HOOK BOLT	1
12.	K3-C010-00	RAM	1
13.	K3-C010-10	SPACING RING	1
14.	K2-C018-00	WASHER	6
15.	K3-C019-00	ADAPTOR LOCK BOLT	2
16.	K2-C019-00	ADAPTOR LOCK BLOT	5
17.	K2-C017-10	ADAPTOR PIVOT STUD	1
18.	SP-ø5x14	SPRING PIN	2
19.	K5-C110-00	SCREW	2
20.	K2-C046-70	LOCK PLUNGER	2
21.	PM-GE22	RAM PLATE	1
22.	HN-3/8" NC	NUT	2
23.	K2-C107-00	RAM LOCKING BOLT	2
24.	K2-C120-00	RAM PINION	1
25.	PM-GE29	ZERO PLATE	3
26.	PM-GE24	TURRET SCALE	1
27.	K2-C118-00	SLIDER	1
28.	SR-M5x6L	ROUND HEAD SCREW	6
29.	K5-C135-00	COOLANT PUMP COVER	1
30.	L3-C098-A0	COLUMN	1
31.	K2-C130-00	STRANER NET	1
32.	L3-C103-00	PEDESTAL	1
33.	SC-M10x30L	SOCKET CAP SCREW	2
34.	HN-M8	NUT	1
35.	SC-M8x50L	SOCKET CAP SCREW	1
36.	SR-M5x12L	ROUND HEAD SCREW	8
37.	L3-C100-00	WAVE WAY COVER	1
38.	L3-C101-00	FLAT WY COVER	1
39.	SP-ø6x24	SPRING PIN	1
40.	SC-M8x25L	SOCKET CAP SCREW	2
41.	L3-C111-00	RAM / TURRET GIB	1
42.	PM-GE25	ADAPTOR SCALE	1
43.	L3-C124-00	TURRET	1
44.	PM-GE32	ADAPTOR SCALE	1
45.	K2-C128-00	RAM PINION SET SCREW	1

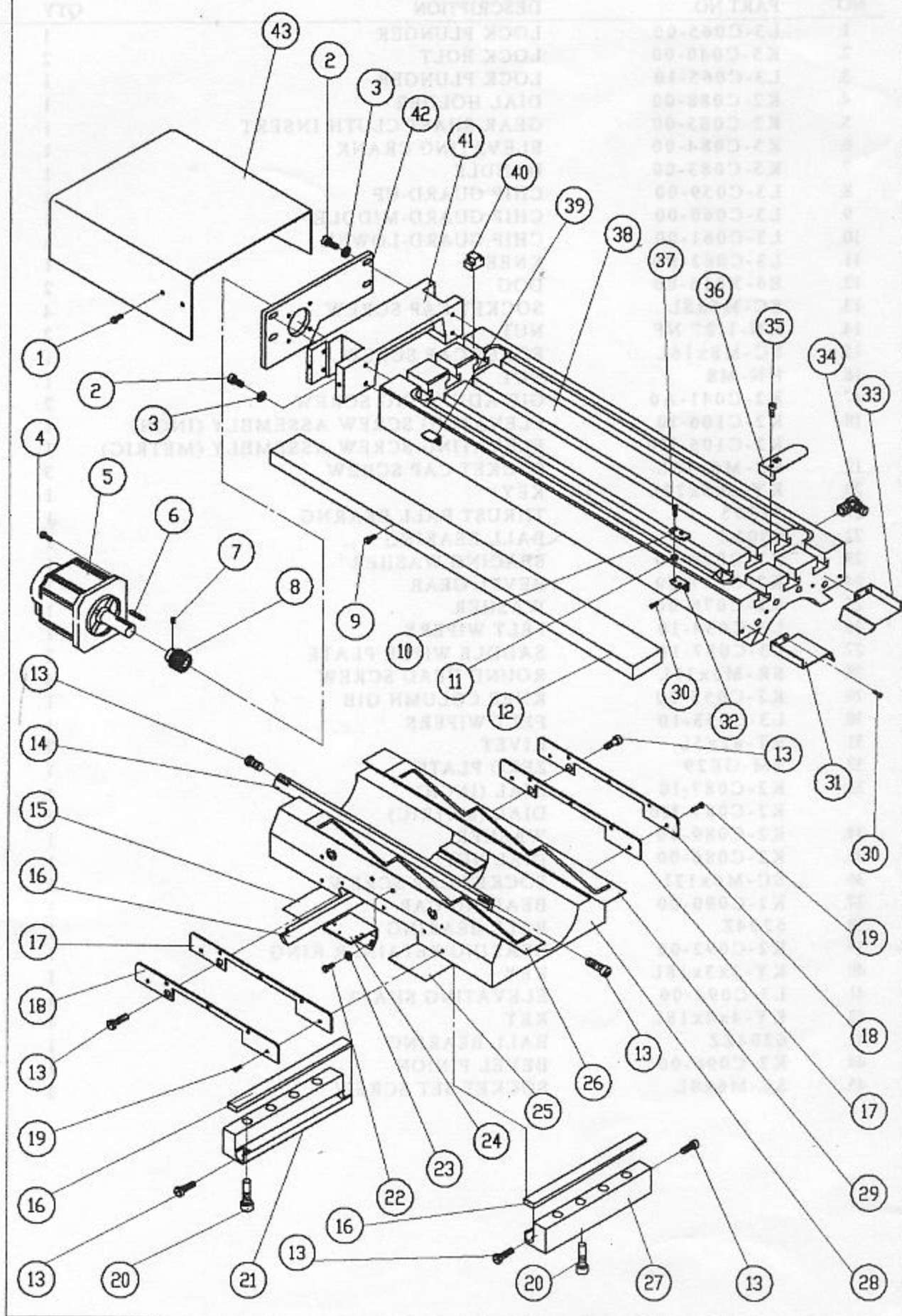
KNEE ASSEMBLY



KNEE ASSEMBLY PARTS LIST

NO	PART NO.	DESCRIPTION	QTY
1.	L3-C065-00	LOCK PLUNGER	1
2.	K5-C040-00	LOCK BOLT	2
3.	L3-C065-10	LOCK PLUNGER	1
4.	K2-C088-00	DIAL HOLDER	1
5.	K2-C085-00	GEAR SHAFT CLUTH INSERT	1
6.	K5-C084-00	ELEVATING CRANK	1
7.	K5-C083-00	HANDLE	1
8.	L3-C059-00	CHIP GUARD-UP	1
9.	L3-C060-00	CHIP GUARD-MIDDLE	1
10.	L3-C061-00	CHIP GUARD-LOWER	1
11.	L3-C062-B0	KNEE	1
12.	B6-X016-00	DOG	2
13.	SC-M5x8L	SOCKET CAP SCREW	4
14.	HN-1/2" NF	NUT	2
15.	SC-M8x16L	SCKET CAP SCREW	1
16.	HN-M8	NUT	1
17.	K2-C041-A0	GIB ADJUSTING SCREW	2
18.	K2-C106-10	ELEVATING SCREW ASSEMBLY (INCH)	1
	K2-C106-M0	ELEVATING SCREW ASSEMBLY (METRIC)	1
19.	SC-M6x16L	SOCKET CAP SCREW	3
20.	KY-5x5x22L	KEY	1
21.	51205	THRUST BALL BEARNG	1
22.	6005Z	BALL BEARING	1
23.	K2-C079-00	SPACING WASHER	1
24.	K2-C077-00	BEVEL GEAR	1
25.	K2-C076-00	WASHER	1
26.	L3-C054-10	FELT WIPERS	1
27.	L3-C057-10	SADDLE WIPER PLATE	2
28.	SR-M5x10L	ROUND HEAD SCREW	4
29.	K2-C055-00	KNEE COLUMN GIB	1
30.	L3-C053-10	FELT WIPERS	1
31.	RT-ø2x5L	RIVET	2
32.	PM-GE29	ZERO PLATE	1
33.	K2-C087-10	DIAL (INCH)	1
	K2-C087-M0	DIAL (METRIC)	1
34.	K2-C089-00	WASHER	1
35.	K2-C086-00	DIAL NUT	1
36.	SC-M6x12L	SOCKET CAP SCREW	3
37.	K2-C090-00	BEARING CAP	1
38.	6204Z	BALL BEARING	1
39.	K2-C092-00	BEARING RETAINER RING	1
40.	KY-3x3x18L	KEY	1
41.	L3-C094-00	ELEVATING SHAFT	1
42.	KY-4x4x18L	KEY	1
43.	6204ZZ	BALL BEARING	1
44.	K2-C096-00	BEVEL PINION	1
45.	SS-M6x8L	SOCKET SET SCREW	2

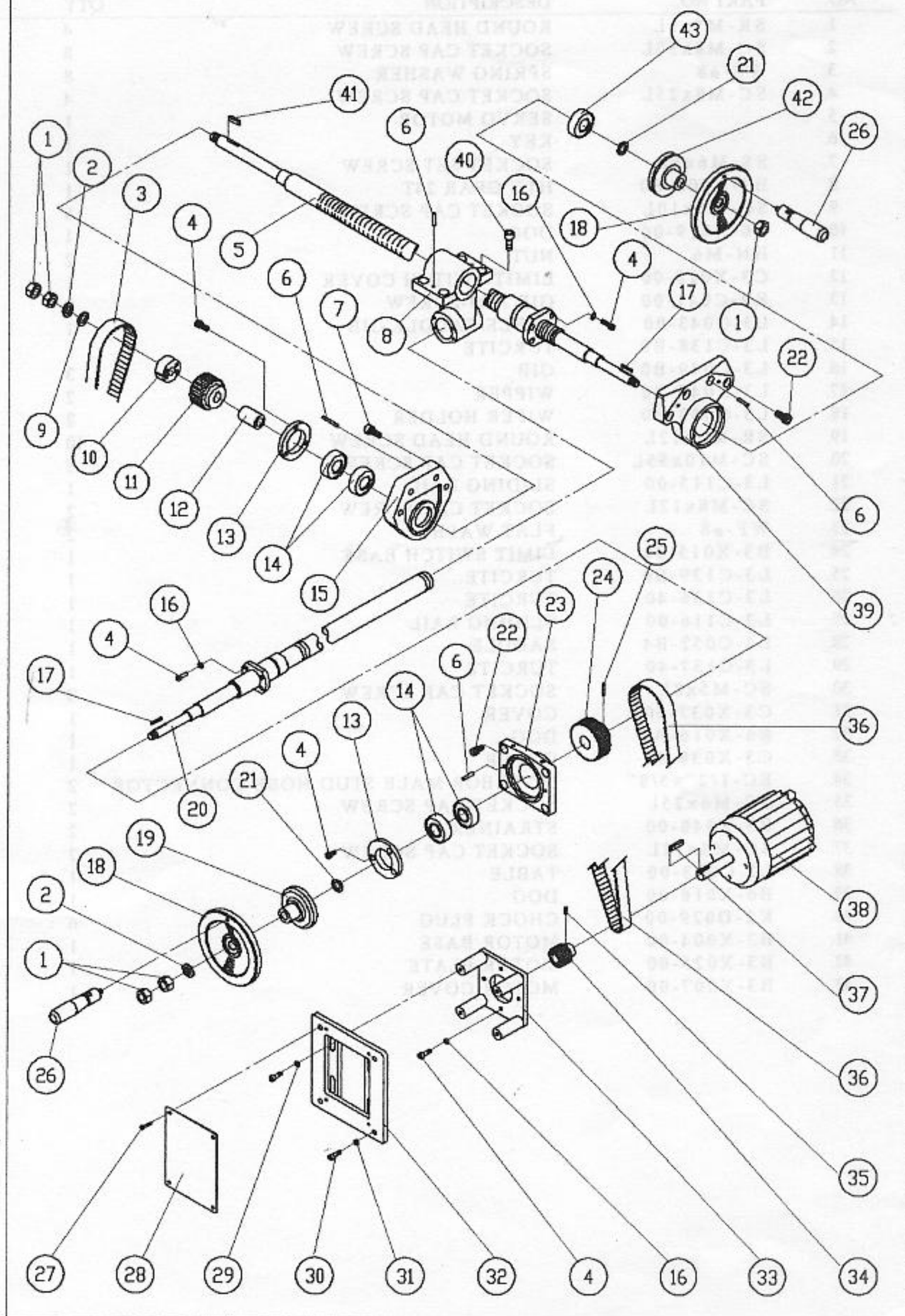
TABLE, SADDLE ASSEMBLY



TABLE, SADDLE ASSEMBLY PARTS LIST

NO.	PART NO.	DESCRIPTION	QTY
1.	SR-M5x6L	ROUND HEAD SCREW	4
2.	SC-M8x50L	SOCKET CAP SCREW	8
3.	WS-ø8	SPRING WASHER	8
4.	SC-M8x25L	SOCKET CAP SCREW	4
5.		SERVO MOTOR	1
6.		KEY	1
7.	SS-M6x6L	SOCKET SET SCREW	1
8.	B3-X008-S0	HTD GEAR 24T	1
9.	SC-M6x10L	SOCKET CAP SCREW	6
10.	B6-X019-00	DOG	1
11.	HN-M6	NUT	2
12.	C3-X020-00	LIMIT SWITCH COVER	1
13.	K2-C041-00	GIB ADJ-SCREW	8
14.	L3-C043-00	TABLE/SADDLE GIB	1
15.	L3-C138-B0	TURCITE	1
16.	L3-C049-B0	GIB	3
17.	L3-C044-B0	WIPPER	2
18.	L3-C050-B0	WIPER HOLDER	2
19.	SR-M6x12L	ROUND HEAD SCREW	10
20.	SC-M10x55L	SOCKET CAP SCREW	8
21.	L3-C115-00	SLIDING RAIL	1
22.	SC-M8x12L	SOCKET CAP SCREW	2
23.	WF-ø8	FLAT WASHER	2
24.	B3-X015-00	LIMIT SWITCH BASE	1
25.	L3-C139-B0	TURCITE	1
26.	L3-C136-40	TURCITE	1
27.	L3-C116-00	SLIDING RAIL	1
28.	L3-C052-B4	SADDLE	1
29.	L3-C137-40	TURCITE	1
30.	SC-M5x8L	SOCKET CAP SCREW	8
31.	C3-X037-00	COVER	1
32.	B6-X016-A0	DOG	1
33.	C3-X038-00	COVER	1
34.	EC-1/2"x5/8"	90° ELBOR MALE STUD HOSE CONNECTOR	2
35.	SC-M6x25L	SOCKET CAP SCREW	2
36.	B3-X040-00	STRAINER	2
37.	SC-M5x12L	SOCKET CAP SCREW	2
38.	L3-C023-00	TABLE	1
39.	B6-X016-00	DOG	1
40.	K2-D029-00	CHOCK PLUG	6
41.	B3-X004-00	MOTOR BASE	1
42.	B3-X025-00	MOTOR PLATE	1
43.	B3-X007-00	MOTOR COVER	1

X,Y AXES ASSEMBLY



X,Y AXES ASSEMBLY PARTS LIST

NO.	PART NO.	DESCRIPTION	QTY
1.	HN-5/8"-UNF	NUT	5
2.	WS-ø5/8"	SPRING WASHER	2
3.	375-5Mx22	HTD BELT	1
4.	SC-M6x20L	SOCKET CAP SCREW	18
5.	B3-X017-M0	X AXIS BALL SCREW	1
6.	TP-#4x38L	TAPER PIN	8
7.	SC-M10x35L	SOCKET CAP SCREW	4
8.	K2-D022-A0	FEED NUT BRACKET	1
9.	WF-ø5/8"	FLAT WASHER	1
10.	B3-X031-00	LOCK BLOCK	1
11.	B3-X030-01	HTD GEAR 48T	1
12.	B3-X026-00	SPACER	1
13.	C3-C090-00	BEARING CAP	2
14.	20TAA04DB	BALL BEARING	4
15.	B4-X005-00	BRACKET	1
16.	WS-ø6	SPRING WASHER	12
17.	KY-3x3x25L	KEY	2
18.	B6-X042-00	HANDLE WHEEL	2
19.	B3-Y041-00	BUSHING	1
20.	B3-Y000-M0	Y AXIS BALL BEARING	1
21.	K2-D018-00	WASHER	2
22.	SC-M10x20L	SOCKET CAP SCREW	8
23.	K2-D028-00	BRACKET	1
24.	B3-Y030-00	HTD GEAR 48T	1
25.	TP-#4x45L	TAPER PIN	1
26.	B6-X043-00	HANDLE	2
27.	SR-M5x6L	ROUND HEAD SCREW	4
28.	C3-Y022-00	PROTECTION PLATE	1
29.	SC-M8x20L	SOCKET CAP SCREW	8
30.	WF-ø8	FLAT WASHER	1
31.	WS-ø6	SPRING WASHER	4
32.	C3-Y019-00	MOTOR BASE FIXED PLATE	1
33.	C3-Y015-00	MOTOR BASE	1
34.	B3-X008-S0	HTD GEAR 24T	1
35.	SS-M6x6L	SOCKET SET SCREW	1
36.	475-5Mx22	HTD BELT	1
37.		KEY	1
38.		SERVO MOTOR	1
39.	K2-D011-00	BRACKET	1
40.	SC-M10x25L	SOCKET CAP SCREW	4
41.	KY-6x6x20L	KEY	1
42.	B3-X041-00	BUSHING	1
43.	6204ZZ	BALL BEARING	1