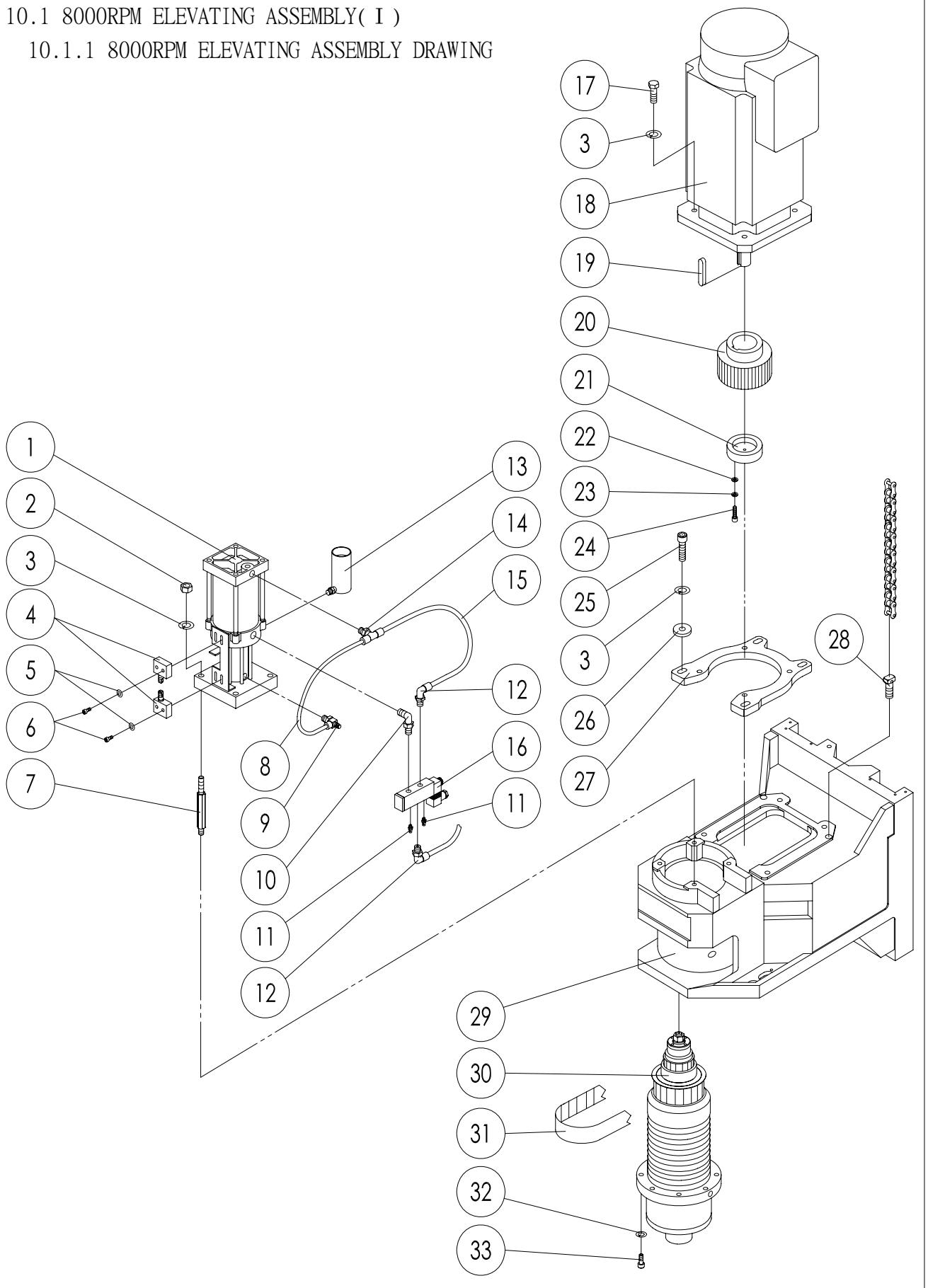


10. PART LISTS

10.1 8000RPM ELEVATING ASSEMBLY(I)

10.1.1 8000RPM ELEVATING ASSEMBLY DRAWING

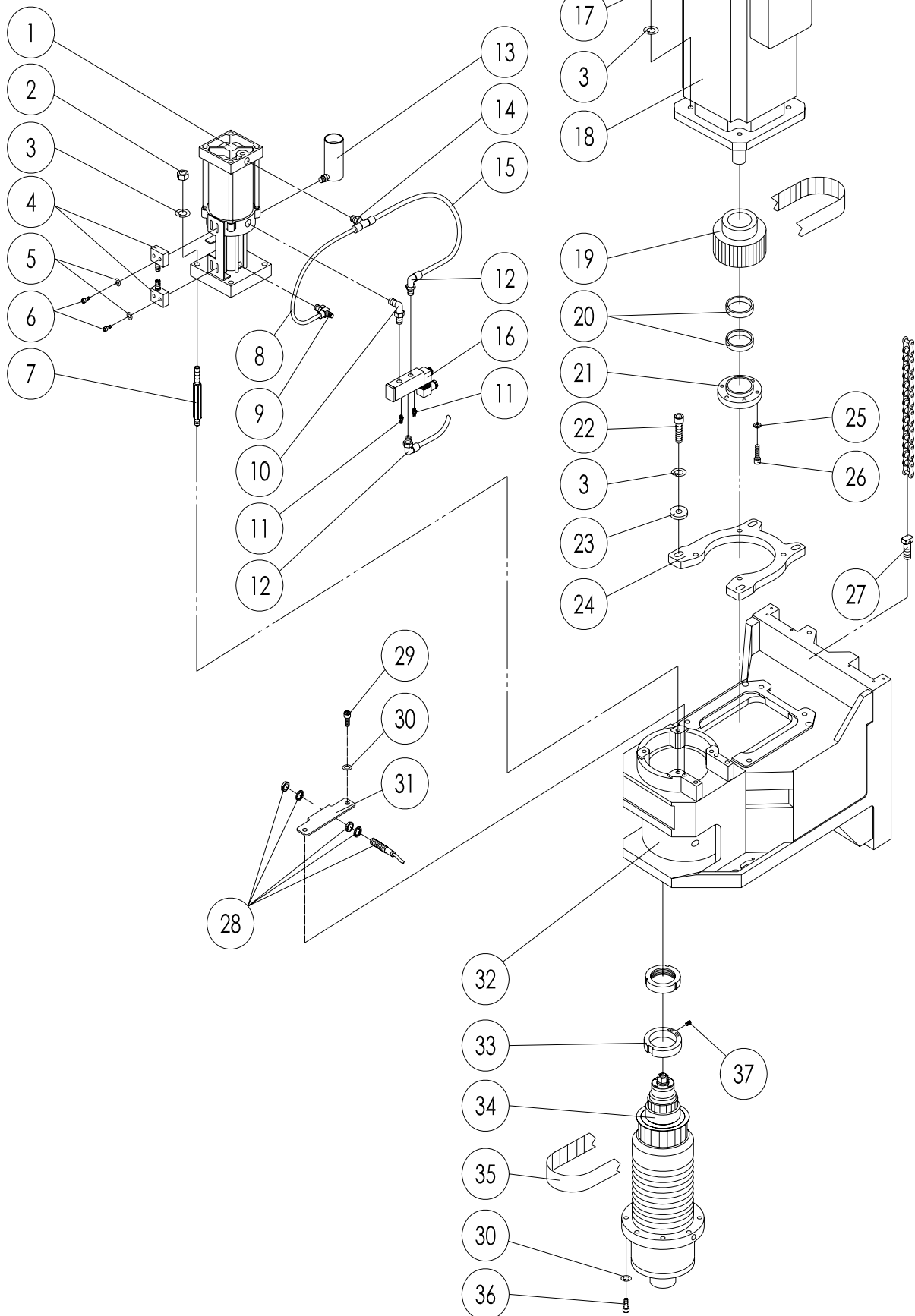


10.1.2 8000RPM ELEVATING ASSEMBLY PARTS LIST (I) PART LIST

NO.	PART NO.	DESCRIPTION	QTY
1.	3.5TON×13	PNEUMATIC BOOSTING CYLINDER	1
2.	HN-M12	NUT	4
3.	WS-Ø12	SPRING WASHER	8
4.	TZ7311	LIMIT SWITCH	2
5.	WF-Ø4	FLAT WASHER	4
6.	SC-M4x30L	SOCKET CAP SCREW	4
7.	4M-H046-00	LOCK BOLT	4
8.	Ø10×40L	PU CONVEYING HOSES	1
9.	JSC1002-B	STUD FITTING	1
10.	PT1/4" ×PT1/4" (P074)	90° BRASS ADAPTER	1
11.	SL-01	SLIEVCERS	2
12.	3109.10.13	STUD FITTING (FULL ENCLOSURE)	2
12-1.	3109.10.13	STUD FITTING (TABLE GUARD)	1
13.	OIL CAP	OIL CAP	1
14.	3108.10.13	STUD FITTING (FULL ENCLOSURE)	1
14-1.	3108.10.13	STUD FITTING (TABLE GUARD)	2
15.	Ø10×30L	PU CONVEYING HOSES	1
16.	PHS502S-8	SOLENOID VALVES	1
17.	SH-M12×30L	HEX. HEAD SCREW	4
18.	SJ-PF7.5(10HP)	SPINDLE MOTOR (MITSUBISHI)	1
19.	KY-10×8×70L	KEY (SJ-PF11(15HP))	1
20.	V5-H051-M0	8YU HTD GEAR	1
21.	M4-H008-F0	HTD GEAR CAP	1
22.	WF-Ø5	FLAT WASHER	3
23.	WS-Ø5	SPRING WASHER	3
24.	SC-M5x20L	SOCKET CAP SCREW	3
25.	SC-M12x40L	SOCKET CAP SCREW	4
26.	Ø12×Ø35×6	FLAT WASHER	4
27.	2M-H049-00	MOTOR BASE	1
28.	M3-Z008-00	BALANCING SCREW	2
29.	2M-A002-01	ELEVATING CASTING	1
30.	BT-#40	SPINDLE (MICROLAB)	1
31.	8YU-824×38	SPINDLE HTD BELT	1
32.	WS-Ø8	SPRING WASHER	6
33.	SC-M8x35L	SOCKET CAP SCREW	6

10.2 8000RPM ELEVATING ASSEMBLY (I)-FANUC

10.2.1 ELEVATING ASSEMBLY DRAWING

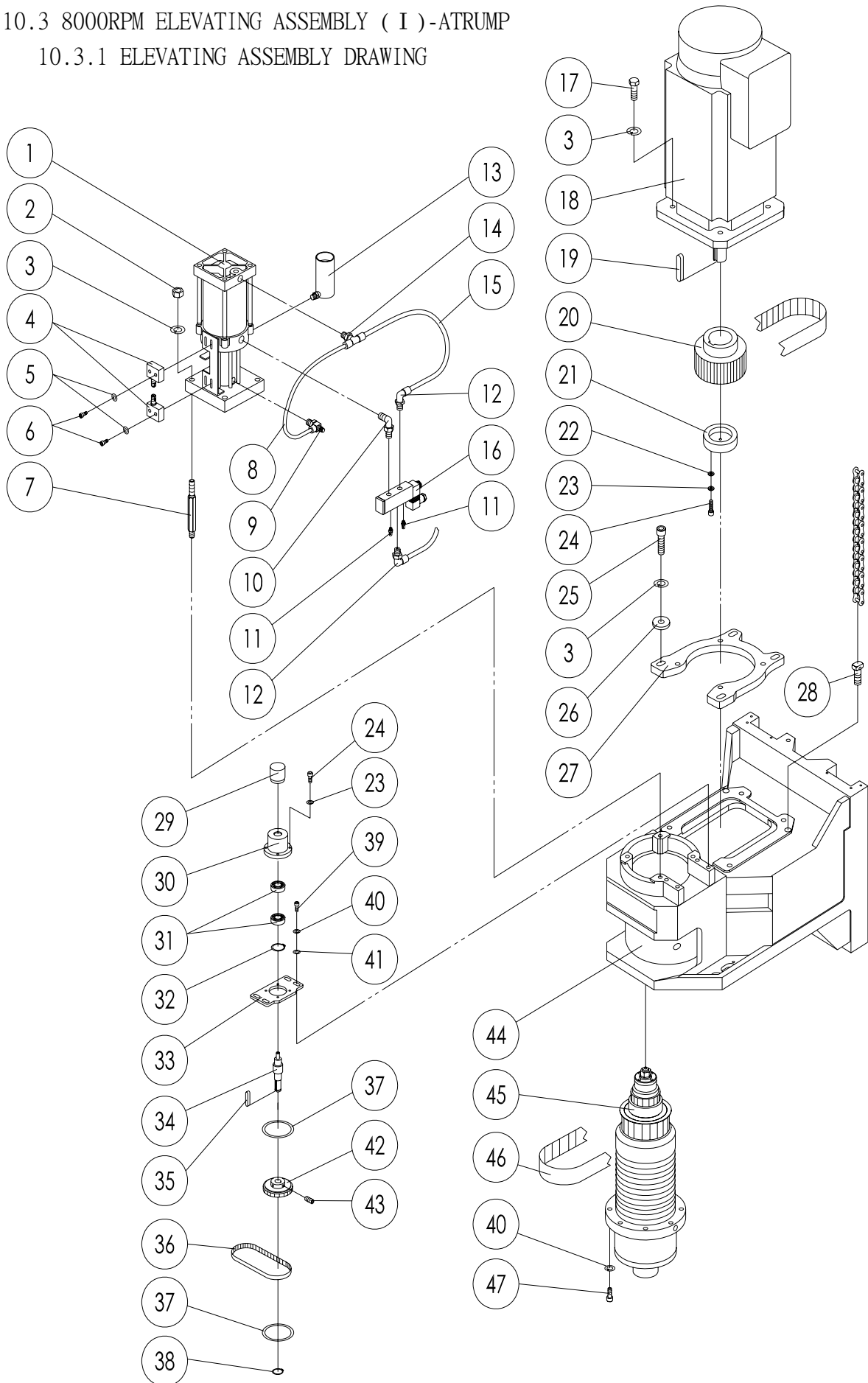


10.2.2 ELEVATING ASSEMBLY (I) PART LIST

NO.	PART NO.	DESCRIPTION	QTY
1.	3.5TON×13	PNEUMATIC BOOSTING CYLINDER	1
2.	HN-M12	NUT	4
3.	WS-Ø12	SPRING WASHER	8
4.	TZ7311	LIMIT SWITCH	2
5.	WF-Ø4	FLAT WASHER	4
6.	SC-M4×30L	SOCKET CAP SCREW	4
7.	4M-H046-00	LOCK BOLT	4
8.	Ø10×40L	PU CONVEYING HOSES	1
9.	JSC1002-B	STUD FITTING	1
10.	PT1/4" ×PT1/4" (P074)	90° BRASS ADAPTER	1
11.	SL-01	SLIEVCERS	2
12.	3109.10.13	STUD FITTING (FULL ENCLOSURE)	2
12-1.	3109.10.13	STUD FITTING (TABLE GUARD)	1
13.	OIL CAP	OIL CAP	1
14.	3108.10.13	STUD FITTING (FULL ENCLOSURE)	1
14-1.	3108.10.13	STUD FITTING (TABLE GUARD)	2
15.	Ø10×30L	PU CONVEYING HOSES	1
16.	PHS502S-8	SOLENOID VALVES	1
17.	SH-M12×30L	HEX. HEAD SCREW	4
18.	α 6/10000i -5.5/7.5KW(10HP)	SPINDLE MOTOR (FANUC)	1
19.	V5-H051-F0	8YU HTD GEAR	1
20.	Ø32×Ø36×6.3	LOCK RING	2
21.	4M-H008-F0	LOCK BLOCK	1
22.	SC-M12×40L	SOCKET CAP SCREW	4
23.	Ø12×Ø35×6	FLAT WASHER	4
24.	2M-H049-00	MOTOR BASE	1
25.	WS-Ø6	SPRING WASHER	6
26.	SC-M6×20L	SOCKET CAP SCREW	6
27.	M3-Z008-00	BALANCING SCREW	2
28.	SENIOR	SENIOR	1
29.	SC-M8×16L	SOCKET CAP SCREW	4
30.	WS-Ø8	SPRING WASHER	8
31.	V5-H057-A1	SENIOR BRACKET	1
32.	2M-A002-01	ELEVATING CASTING	1
33.	V5-H054-A0	SENSOR' S ORIENTATION RING	1
34.	BT-#40	SPINDLE (MICROLAB)	1
35.	8YU-824×38	SPINDLE HTD BELT	1
36.	SC-M8×35L	SOCKET CAP SCREW	6
37.	SS-M6×10L	SOCKET SET SCREW	1

10.3 8000RPM ELEVATING ASSEMBLY (I)-ATRUMP

10.3.1 ELEVATING ASSEMBLY DRAWING

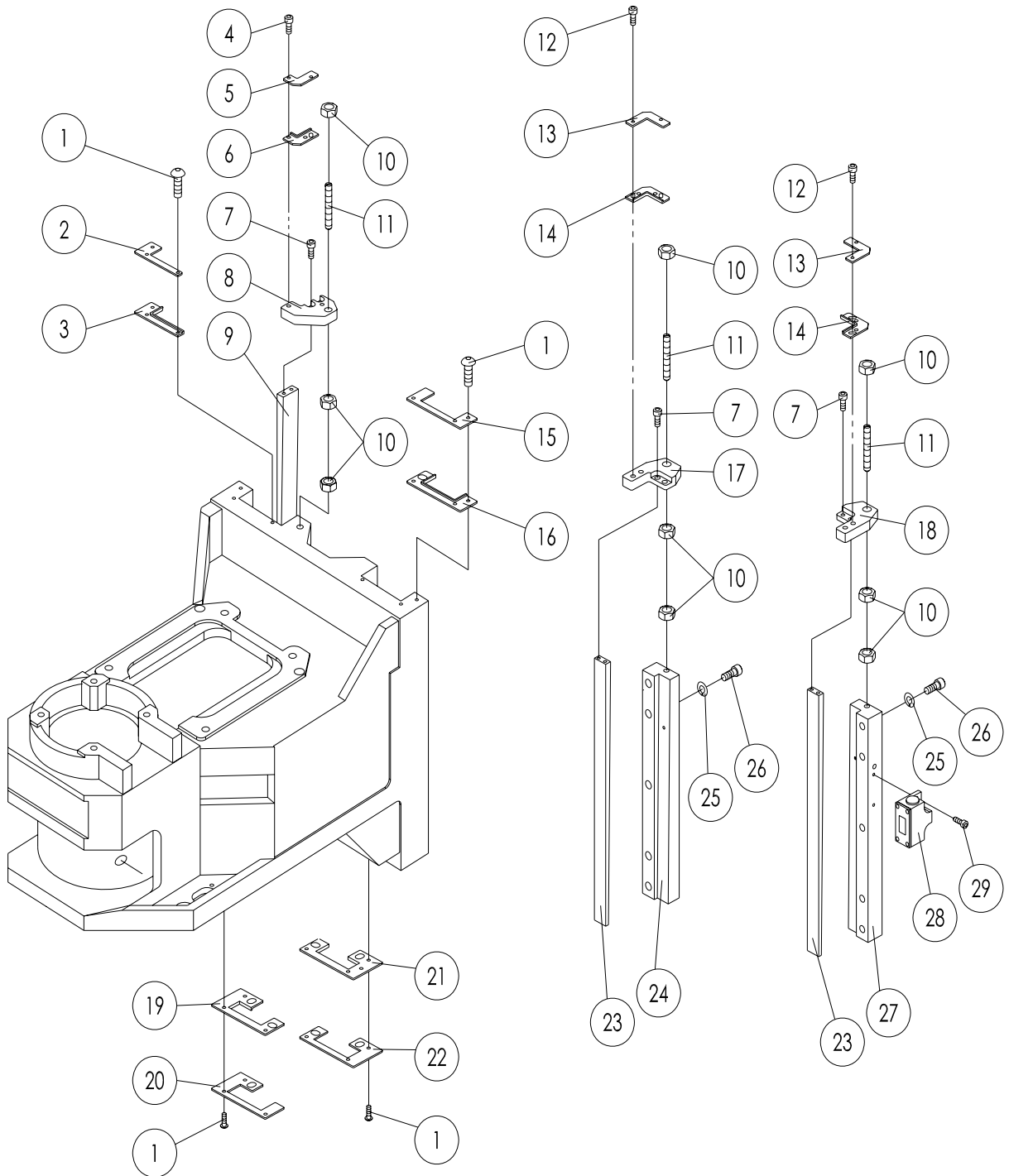


10.3.2 ELEVATING ASSEMBLY (I) PART LIST

NO.	PART NO.	DESCRIPTION	QTY
1.	3.5TON×13	PNEUMATIC BOOSTING CYLINDER	1
2.	HN-M12	NUT	4
3.	WS-Ø12	SPRING WASHER	12
4.	TZ7311	LIMIT SWITCH	2
5.	WF-Ø4	FLAT WASHER	4
6.	SC-M4×30L	SOCKET CAP SCREW	4
7.	4M-H046-00	LOCK BOLT	4
8.	Ø10×40L	PU CONVEYING HOSES	1
9.	JSC1002-B	STUD FITTING	1
10.	PT1/4" ×PT1/4" (P074)	90° BRASS ADAPTER	1
11.	SL-01	SLIEVCERS	2
12.	3109.10.13	STUD FITTING (FULL ENCLOSURE)	2
12-1.	3109.10.13	STUD FITTING (TABLE GUARD)	1
13.	OIL CAP	OIL CAP	1
14.	3108.10.13	STUD FITTING (FULL ENCLOSURE)	1
14-1.	3108.10.13	STUD FITTING (TABLE GUARD)	2
15.	Ø10×30L	PU CONVEYING HOSES	1
16.	PHS502S-8	SOLENOID VALVES	1
17.	SH-M12×30L	HEX. HEAD SCREW	4
18.	10HP	SPINDLE MOTOR (CHERHG CHANG)	1
19.	KY-10×8×70L	KEY	1
20.	V5-H051-M0	SPINDLE MOTOR HTD GEAR (8YU)	1
21.	M4-H008-F0	HTD GEAR CAP	1
22.	WF-Ø5	FLAT WASHER	3
23.	WS-Ø5	SPRING WASHER	7
24.	SC-M5×20L	SOCKET CAP SCREW	7
25.	SC-M12×40L	SOCKET CAP SCREW	4
26.	Ø12×Ø35×6	FLAT WASHER	4
27.	2M-H049-00	MOTOR BASE	1
28.	M3-Z008-00	BALANCING SCREW	2
29.	LHE-408-1024	ENCODER	1
30.	V7-H056-00	BEARING BRACKET	1
31.	6003LLB	BEARING	2
32.	SR-35	SNAP RING (FOR HOLD)	1
33.	V7-H057-00	ENCODER BRACKET	1
34.	B8-H058-00	ENCODER SHAFT	1
35.	KY-5×5×25L	KEY	1
36.	5GT-450×10	ENCODER BELT	1
37.	V7-H062-00	SIDE RING	2
38.	SE-15	SNAP RING (FOR SHAFT)	1
39.	SC-M8×16L	SOCKET CAP SCREW	4
40.	WS-Ø8	SPRING WASHER	10
41.	WF-Ø8	FLAT WASHER	4
42.	V7-H061-00	ENCODER PULLEY	1
43.	SS-M5×6L	SOCKET SET SCREW	2
44.	2M-A002-01	ELEVATING CASTING	1
45.	BT-#40	SPINDLE (MICROLAB)	1
46.	8YU-824×38	SPINDLE HTD BELT	1
47.	SC-M8×35L	SOCKET CAP SCREW	6

10.4 ELEVATING ASSEMBLY (II)

10.4.1 ELEVATING ASSEMBLY DRAWING

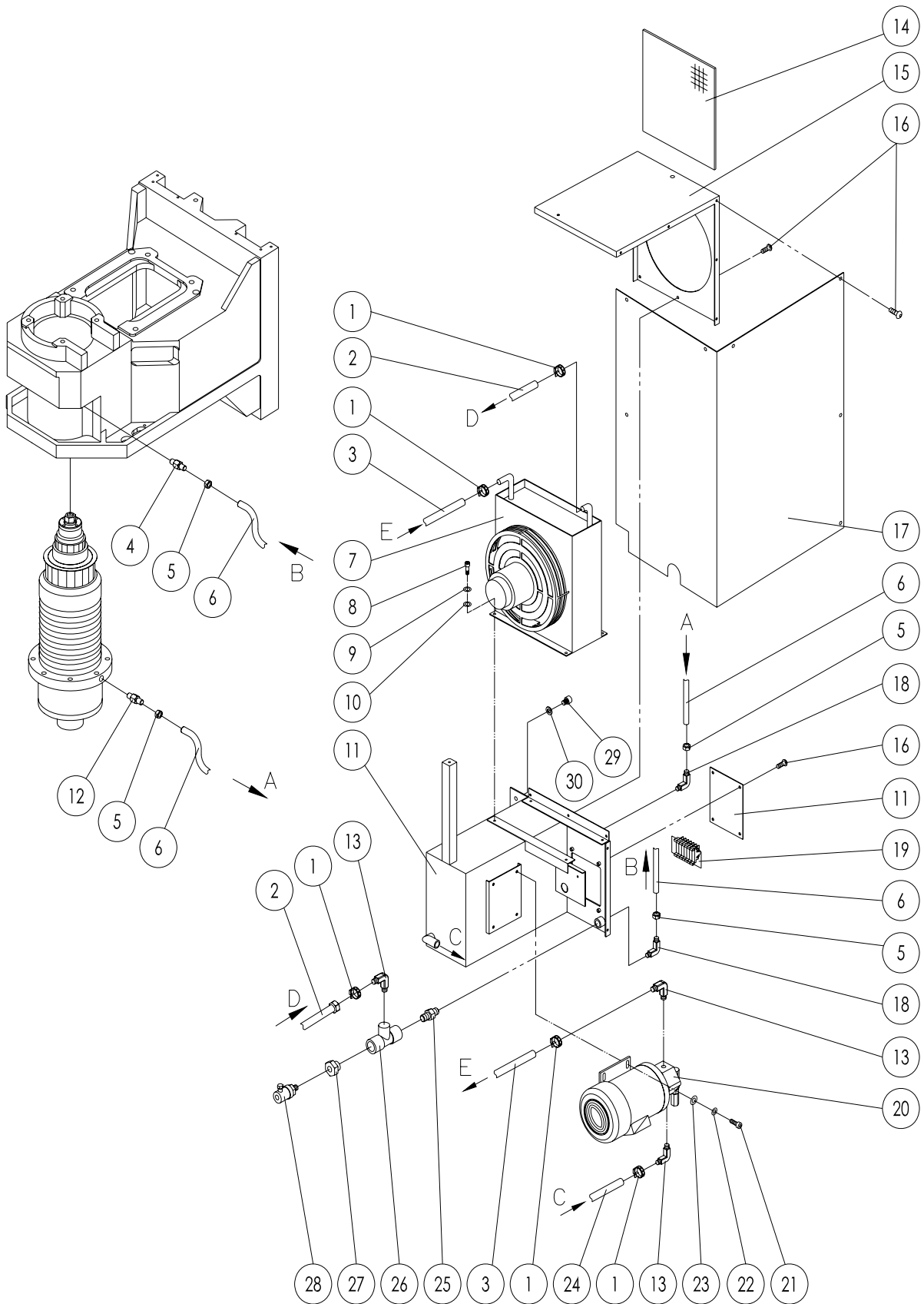


10.4.2 ELEVATING ASSEMBLY (II) PART LIST

NO.	PART NO.	DESCRIPTION	QTY
1.	SB-M5×12L	HEX SOCKET BUTTON HEAD SCREW	12
2.	M4-Z013-01	WIPER HOLDER	1
3.	M4-Z015-01	WIPER	1
4.	SB-M5×12L	HEX SOCKET BUTTON HEAD SCREW	2
5.	M4-Z078-00	WIPER	1
6.	M4-Z079-00	WIPER HOLDER	1
7.	SC-M6×16L	SOCKET CAP SCREW	6
8.	M4-Z077-01	GIB ADJUSTING PLATE	1
9.	V5-Z022-00	ELEVATING CASTING GIB	1
10.	HN-M10	NUT	9
11.	B6-X046-00	GIB SCREW	3
12.	SC-M6×12L	SOCKET CAP SCREW	4
13.	V5-XB64-00	WIPER HOLDER	2
14.	A6-X070-00	WIPER	2
15.	V6-Z007-R2	WIPER HOLDER	1
16.	V6-Z014-R1	WIPER	1
17.	M4-Z047-L0	GIB ADJUSTING PLATE	1
18.	M4-Z047-R0	GIB ADJUSTING PLATE	1
19.	V6-Z015-L1	WIPER	1
20.	V6-Z013-L1	WIPER HOLDER	1
21.	V6-Z015-R1	WIPER	1
22.	V6-Z013-R1	WIPER HOLDER	1
23.	V6-Z024-00	GIB	2
24.	V6-Z010-00	DEPRESSOR (LEFT)	1
25.	WS-Ø12	SPRING WASHER	10
26.	SC-M12×40L	SOCKET CAP SCREW	10
27.	V6-Z011-00	DEPRESSOR (RIGHT)	1
28.	SN02D12-502C1688	LIMIT SWITCH	1
29.	SC-M5×20L	SOCKET CAP SCREW	2

10.5 OLD COOLER ASSEMBLY

10.5.1 OLD COOLER ASSEMBLY DRAWING

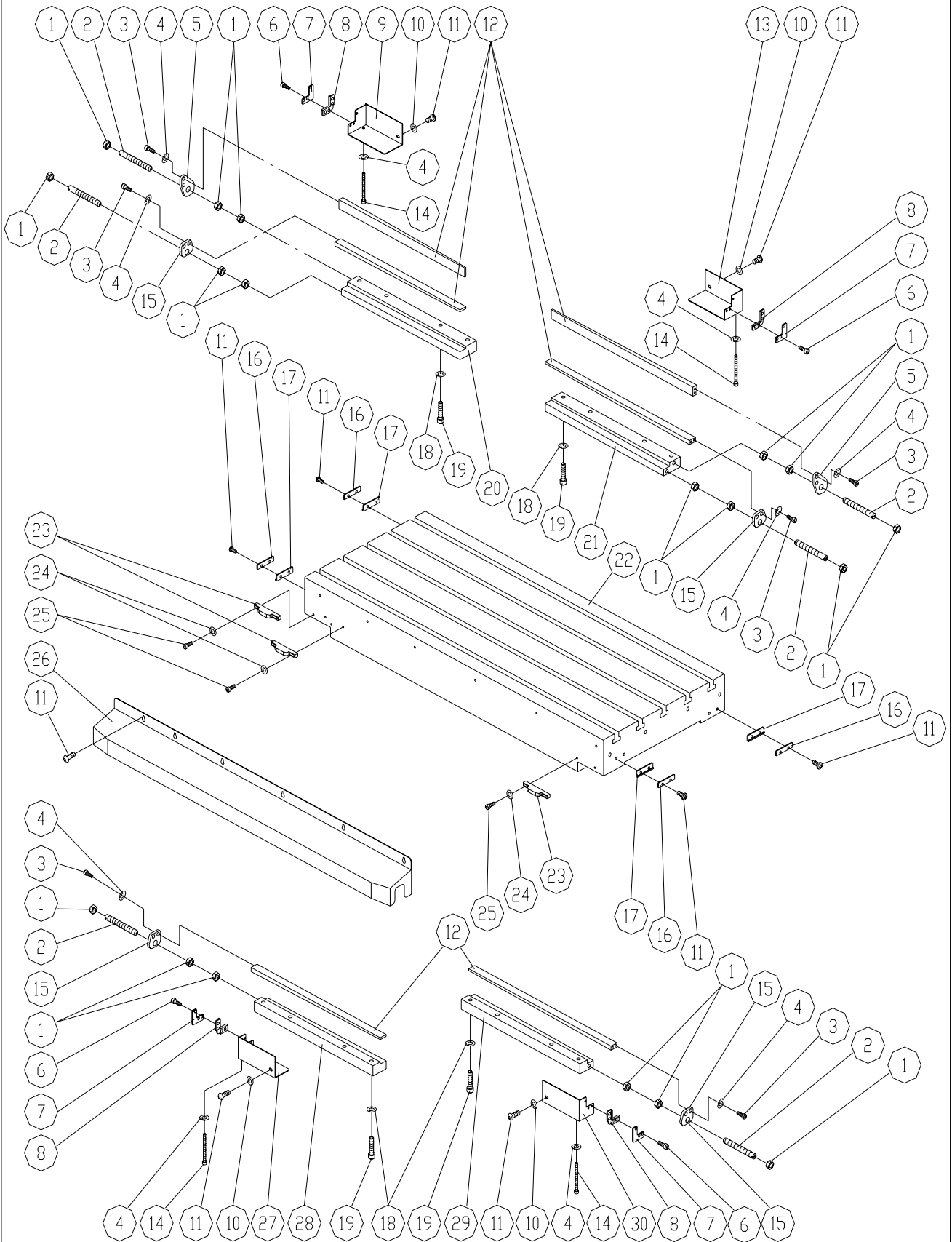


10.5.2 OLD COOLER ASSEMBLY PART LIST

NO.	PART NO.	DESCRIPTION	QTY
1.	Ø7/8"	BIND TUBE	6
2.	Ø1/2" x650L	STAINLESS STEEL CONVEYING HOSES	1
3.	Ø1/2" x520L	STAINLESS STEEL CONVEYING HOSES	1
4.	PT3/8" x Ø10	BRASS ADAPTER	1
5.	Ø10	BRASS SLEEVE	4
6.	Ø10x2800L	PU STAINLESS STEEL CONVEYING HOSES	2
7.	3/83x245	FAN	1
8.	SC-M5x8L	SOCKET CAP SCREW	4
9.	WS-Ø5	SPRING WASHER	4
10.	WF-Ø5	FLAT WASHER	4
11.	M4-C190-02	OLD COOLER	1
12.	PT1/4" x Ø10	BRASS ADAPTER	1
13.	PT3/8" x1/2" ADAPTER	90°ADAPTER	3
14.	245x260	STRAINER	1
15.	M4-C191-01	OLD COOLER COVER	1
16.	SB-M5x8L	HEX SOCKET BUTTON HEAD SCREW	12
17.	M4-C192-02	OLD COOLER COVER	1
18.	PT1/2" x Ø10	90°BRASS ADAPTER	2
19.	10A	10A TERMINAL	1
20.	1/4HP	COOLANT PUMP	1
21.	SC-M6x16L	SOCKET CAP SCREW	4
22.	WS-Ø6	SPRING WASHER	4
23.	WF-Ø6	FLAT WASHER	4
24.	Ø1/2" x380L	STAINLESS STEEL CONVEYING HOSES	1
25.	PT1/2" xPT1/2"	WATER CONNECTION	1
26.	PT1/2"	TRIPLE HEADED CONNECTION	1
27.	PT1/2" xPT1/4"	BRASS ADAPTER	1
28.	PMM-10A-14K	PRESSURE SWITCH	1
29.	SC-M8x10L	SOCKET CAP SCREW	2
30.	WF-Ø8	FLAT WASHER	2

10.6 TABLE ASSEMBLY

10.6.1 TABLE ASSEMBLY DRAWING

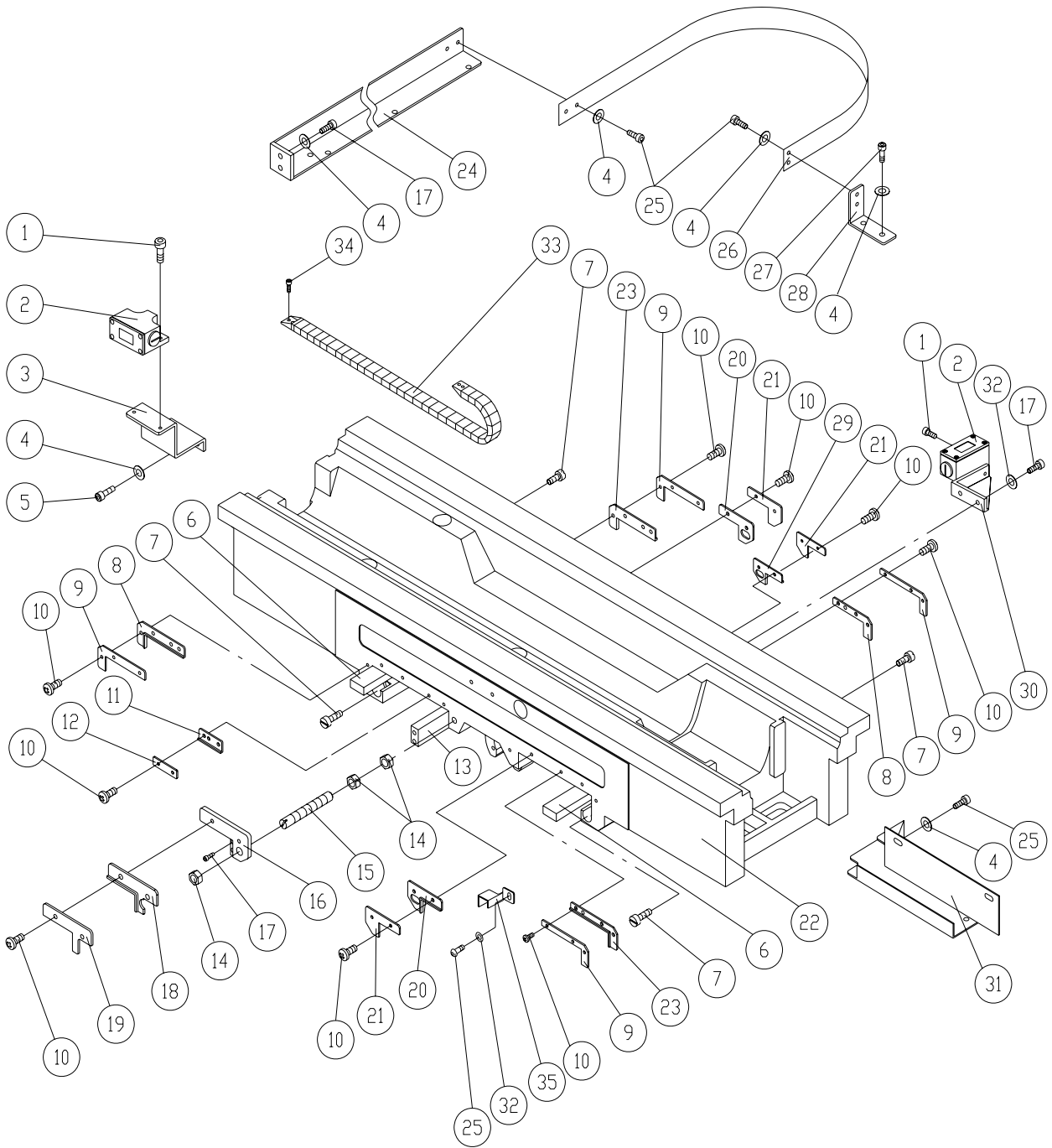


10.6.2 TABLE ASSEMBLY PART LIST

NO.	PART NO.	DESCRIPTION	QTY
1.	HN-M10	NUT	18
2.	B6-X046-00	GIB SCREW	6
3.	SC-M6x16L	SOCKET CAP SCREW	12
4.	WS-Ø6	SPRING WASHER	16
5.	V5-XB47-00	RIGHT GIB ADJUSTING PLATE	2
6.	SB-M6x8L	HEX SOCKET BUTTON HEAD SCREW	12
7.	V5-XB64-00	WORK TABLE WIPER HOLDER	4
8.	A6-X070-00	WIPER	4
9.	2M-X059-L0	LEFT WIPER COVER	1
10.	WF-Ø10	FLAT WASHER	4
11.	SB-M6x10L	HEX SOCKET BUTTON HEAD SCREW	18
12.	K5-C049-00	GIB	6
13.	2M-X059-R0	RIGHT WIPER COVER	1
14.	SC-M6x75L	SOCKET CAP SCREW	4
15.	V5-XB77-00	LEFT GIB ADJUSTING PLATE	4
16.	A6-X068-00	WORK TABLE WIPER HOLDER	4
17.	A6-X069-00	WORK TABLE WIPER	4
18.	WS-Ø10	SPRING WASHER	16
19.	SC-M10x40L	SOCKET CAP SCREW	16
20.	2M-XB67-L0	SLICING RAIL (LEFT)	1
21.	2M-XB67-R0	SLICING RAIL (RIGHT)	1
22.	2M-X001-01	WORK TABLE	1
23.	M4-X016-00	DOG	3
24.	WF-Ø5	FLAT WASHER	6
25.	SC-M5x20L	SOCKET CAP SCREW	6
26.	2M-X020-00	LIMIT SWITCH COVER	1
27.	2M-X058-L0	WIPER COVER (LEFT)	1
28.	2M-XB66-L0	SLICING RAIL (LEFT)	1
29.	2M-XB66-R0	SLICING RAIL (RIGHT)	1
30.	2M-X058-R0	WIPER COVER (RIGHT)	1

10.7 SADDLE ASSEMBLY

10.7.1 SADDLE ASSEMBLY DRAWING

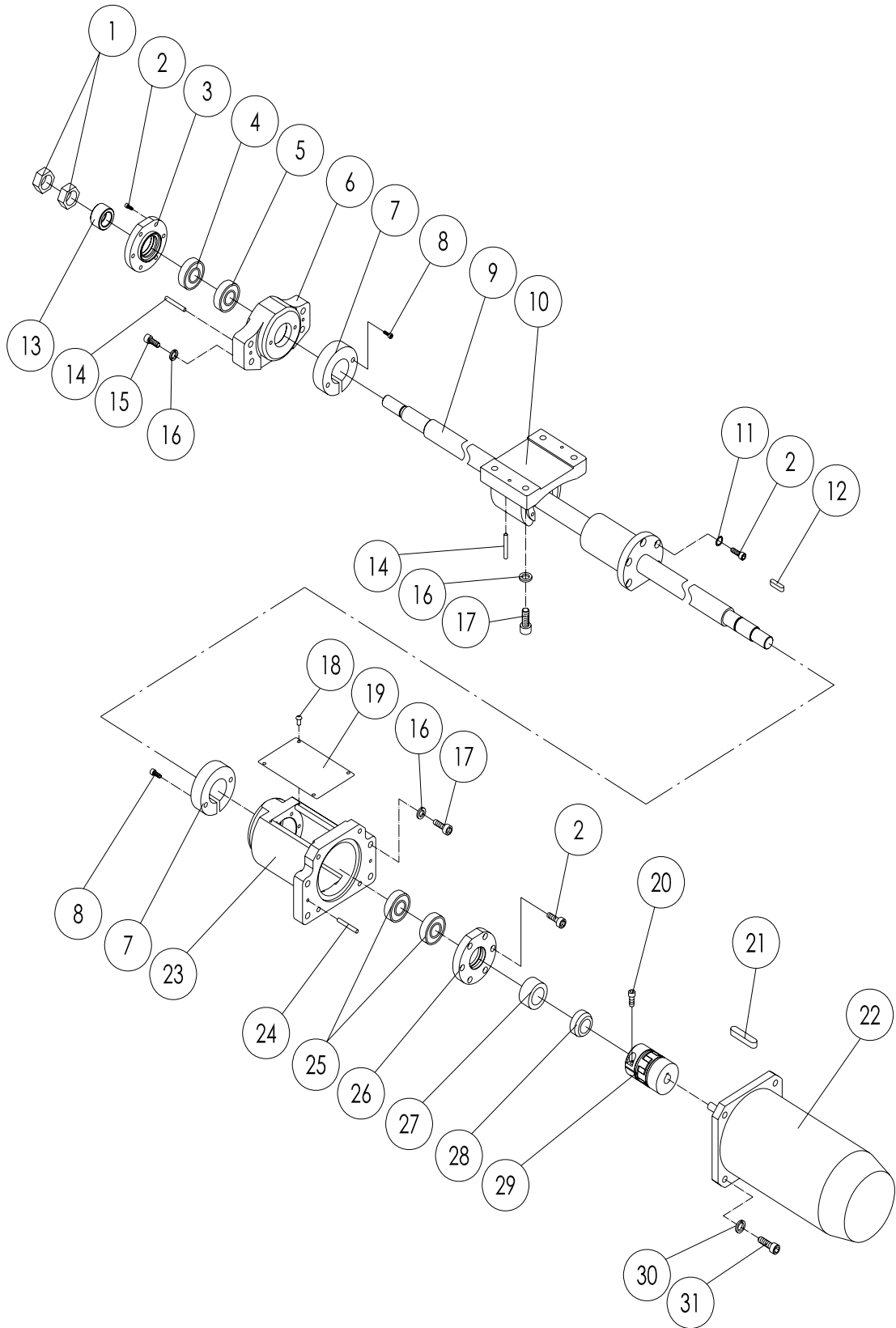


10.7.2 SADDLE ASSEMBLY PART LIST

NO.	PART NO.	DESCRIPTION	QTY
1.	SC-M5x16L	SOCKET CAP SCREW	4
2.	SN02D12-502C1688	LIMIT SWITCH	2
3.	2M-X015-00	LIMITS WITCH BASE	1
4.	WF-Ø6	FLAT WASHER	12
5.	SC-M6x12L	SOCKET CAP SCREW	2
6.	K5-C049-00	GIB	2
7.	K2-C041-00	GIB SCREW	4
8.	V5-Y050-L0	WIPER (LEFT)	2
9.	V5-Y051-00	SADDLE WIPER HOLDER	4
10.	M5x12L	SCREW	22
11.	A6-X069-00	WORK TABLE WIPER	1
12.	A6-X068-00	WORK TABLE WIPER HOLDER	1
13.	B6-Z022-00	ELEVATING CASTING GIB	1
14.	HN-M10	NUT	3
15.	B6-X046-00	GIB SCREW	1
16.	3M-Y077-00	GIB ADJUSTING PLATE	1
17.	SC-M6x16L	SOCKET CAP SCREW	6
18.	3M-Y052-00	SADDLE WIPER	1
19.	3M-Y054-00	SADDLE WIPER HOLDER	1
20.	B7-Y053-01	SADDLE WIPER	2
21.	B7-Y055-01	SADDLE WIPER HOLDER	3
22.	2M-X002-01	SADDLE	1
23.	V5-Y050-R0	SADDLE WIPER (RIGHT)	2
24.	V5-Y086-00	PIPE SUPPORTER	1
25.	SB-M6x8L	HEX SOCKET BUTTON HEAD SCREW	7
26.	V6-Y088-00	COMPRESS SPRING	1
27.	SB-M6x12L	HEX SOCKET BUTTON HEAD SCREW	2
28.	V6-Y087-00	COMPRESS SPRING BRACKET	1
29.	B7-Y052-01	SADDLE WIPER	1
30.	2M-Y075-01	Y AXIS LIMITS WITCH BASE	1
31.	2M-X045-00	TUBE COVER	1
32.	WS-Ø6	SPRING WASHER	3
33.	37目	OIL TUBING FLEXIBLE CARRIER	1
34.	SC-M4x10L	SOCKET CAP SCREW	2
35.	M4-X075-00	BRACKET SUPPORTER BASE	1

10.8 X AXIS ASSEMBLY

10.8.1 X AXIS ASSEMBLY DRAWING

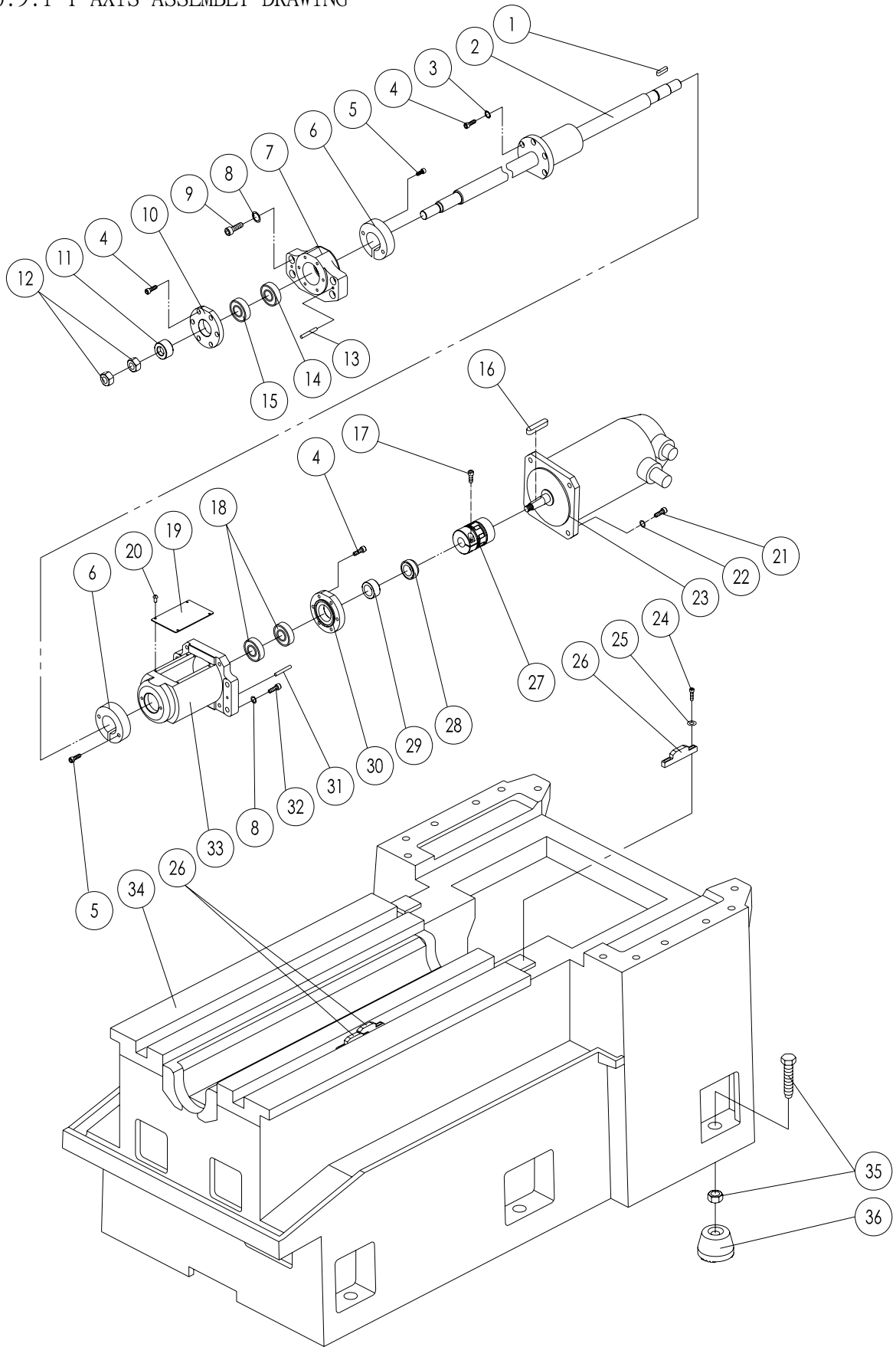


10.8.2 X AXIS ASSEMBLY PART LIST

NO.	PART NO.	DESCRIPTION	QTY
1.	B8-Y035-00	M20 NUT	2
2.	SC-M6x20L	SOCKET CAP SCREW	17
3.	4M-XA09-01	BEARING CAP	1
4.	30304	BEARING	1
5.	6304ZZ	BEARING	1
6.	3M-XA05-01	BEARING BRACKET	1
7.	3M-X085-01	PROTECTION BLOCK	2
8.	SC-M5x16L	SOCKET CAP SCREW	4
9.	2M-X017-01	X AXIS BALL SCREW	1
10.	2M-X003-01	FEED NUT BRACKET	1
11.	WS-Ø6	SPRING WASHER	5
12.	KY-6x6x25L	KEY	1
13.	3M-Y009-00	BEARING SPACER	1
14.	TP-#4x45L	TAPER PIN	4
15.	SC-M10x35L	SOCKET CAP SCREW	4
16.	WS-Ø10	SPRING WASHER	12
17.	SC-M10x40L	SOCKET CAP SCREW	8
18.	SB-M4x8L	HEX SOCKET BUTTON HEAD SCREW	4
19.	3M-X007-00	MOTOR COVER	1
20.	SC-M6x25L	SOCKET CAP SCREW (FOR 3M-X054-M1)	1
20-1.	SC-M6x25L	SOCKET CAP SCREW (FOR 3M-X054-E0)	2
21.	KY-5x5x18L	KEY	1
22.	HA-83N-1KW	SERVO MOTOR (MITSUBISHI)	1
22-1.	α 8/3000i-1.6KW	SERVO MOTOR (FANUC)	1
22-2.	HC-SFS102-1KW	SERVO MOTOR (MITSUBISHI FOR M2000)	1
22-3.	α C8/2000i-1.2KW	SERVO MOTOR (FANUC)	1
23.	3M-X005-01	BEARING BRACKET	1
24.	TP-#4x38L	TAPER PIN	2
25.	2562	BEARING	2
26.	3M-X009-00	BEARING CAP	1
27.	3M-YA09-00	BEARING SPACER	1
28.	3M-Y035-00	LOCK NUT	1
29.	3M-X054-M1	COUPLING (HA-83N-1KW、 α 8/3000i-1.6KW、 α C8/2000i-1.2KW)	1
29-1.	3M-X054-E0	COUPLING (HC-SFS102-1KW)	1
30.	WS-Ø8	SPRING WASHER	4
31.	SC-M8x25L	SOCKET CAP SCREW	4

10.9 Y AXIS ASSEMBLY

10.9.1 Y AXIS ASSEMBLY DRAWING

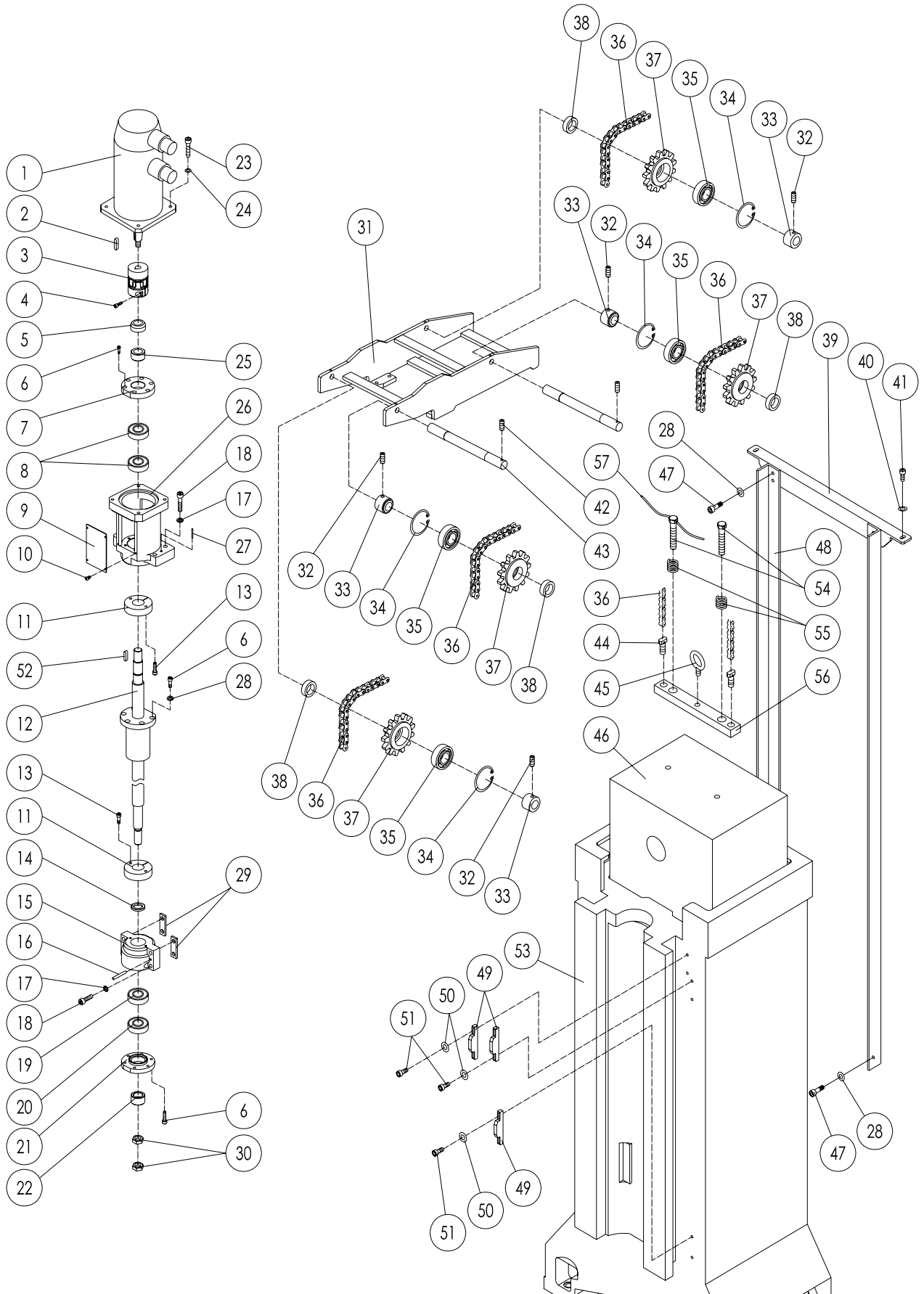


10.9.2 Y AXIS ASSEMBLY PART LIST

NO.	PART NO.	DESCRIPTION	QTY
1.	KY-6x6x25L	KEY	1
2.	2M-Y000-01	Y AXIS BALL SCREW	1
3.	WS-Ø6	SPRING WASHER	5
4.	SC-M6x20L	SOCKET CAP SCREW	17
5.	SC-M5x12L	SOCKET CAP SCREW	4
6.	3M-X085-01	PROTECTION BLOCK	2
7.	3M-XA05-01	BEARING BRACKET	1
8.	WS-Ø10	SPRING WASHER	8
9.	SC-M10x35L	SOCKET CAP SCREW	4
10.	4M-XA09-01	BEARING CAP	1
11.	3M-Y009-00	BEARING SPACER	1
12.	B8-Y035-00	M20 NUT	2
13.	TP-#4x45L	TAPER PIN	2
14.	6304ZZ	BEARING	1
15.	30304	BEARING	1
16.	KY-5x5x18L	KEY	1
17.	SC-M6x25L	SOCKET CAP SCREW (FOR 3M-X054-M1)	1
17-1.	SC-M6x25L	SOCKET CAP SCREW (FOR 3M-X054-E0)	2
18.	2562	BEARING	2
19.	3M-X007-00	MOTOR COVER	1
20.	SB-M4x8L	HEX SOCKET BUTTON HEAD SCREW	4
21.	SC-M8x25L	SOCKET CAP SCREW	4
22.	WS-Ø8	SPRING WASHER	4
23.	HA-83N-1KW	SERVO MOTOR (MITSUBISHI)	1
23-1.	α 8/3000i-1.6KW	SERVO MOTOR (FANUC)	1
23-2.	HC-SFS102-1KW	SERVO MOTOR (MITSUBISHI FOR M2000)	1
23-3.	α C8/2000i-1.2KW	SERVO MOTOR (FANUC)	1
24.	SC-M5x20L	SOCKET CAP SCREW	6
25.	WF-Ø5	SPRING WASHER	6
26.	M4-X016-00	DOG	3
27.	3M-X054-M1	COUPLING (HA-83N-1KW、 α 8/3000i-1.6KW、 α C8/2000i-1.2KW)	1
27-1.	3M-X054-E0	COUPLING (HC-SFS102-1KW)	1
28.	3M-Y035-00	LOCK NUT	1
29.	3M-YA09-00	BEARING SPACER	1
30.	3M-X009-00	BEARING CAP	1
31.	TP-#4x38L	TAPER PIN	2
32.	SC-M10x40L	SOCKET CAP SCREW	4
33.	3M-X005-01	BEARING BRACKET	1
34.	3E-A000-02	SQUARE BASE	1
35.	4M-C100-00	SCREW	6
36.	2M-C099-01	BASE BLOCK	6

10.10 Z AXIS ASSEMBLY

10.10.1 Z AXIS ASSEMBLY DRAWING

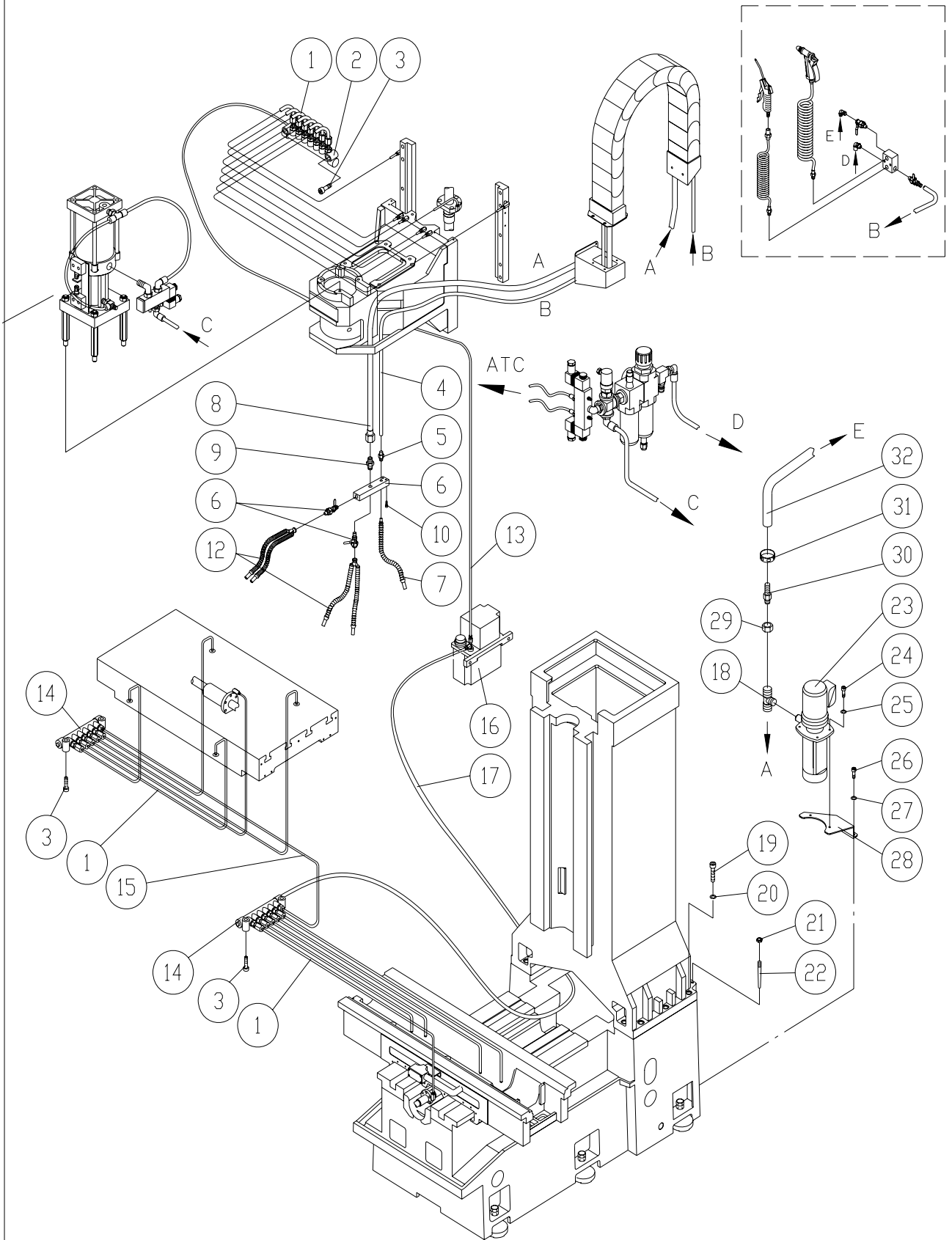


10.10.2 Z AXIS ASSEMBLY PART LIST

NO.	PART NO.	DESCRIPTION	QTY
1.	HA-83N-1KW	SERVO MOTOR (MITSUBISHI)	1
1-1.	α 8/3000i-1.6KW	SERVO MOTOR (FANUC)	1
1-2.	HC-SFS102-1KW	SERVO MOTOR (MITSUBISHI FOR M2000)	1
1-3.	α C8/2000i-1.2KW	SERVO MOTOR (FANUC)	1
2.	KY-5x5x18L	KEY	1
3.	3M-X054-M1	COUPLING (HA-83N-1KW、 α 8/3000i-1.6KW、 α C8/2000i-1.2KW)	1
3-1.	3M-X054-E0	COUPLING (HC-SFS102-1KW)	1
4.	SC-M6x25L	SOCKET CAP SCREW (FOR 3M-X054-M1)	1
4-1.	SC-M6x25L	SOCKET CAP SCREW (FOR 3M-X054-E0)	2
5.	3M-Y035-00	LOCK NUT	1
6.	SC-M5x20L	SOCKET CAP SCREW	17
7.	3M-X009-00	BEARING CAP	1
8.	2562	BEARING	2
9.	3M-X007-00	MOTOR COVER	1
10.	SB-M4x16L	HEX SOCKET BUTTON HEAD SCREW	4
11.	3M-X085-01	PROTECTION BLOCK	2
12.	2M-Z000-01	Z AXIS BALL SCREW	1
13.	SC-M5x12L	SOCKET CAP SCREW	4
14.	TC-25x42x8	O RING	1
15.	4M-ZA05-01	Z AXIS BEARING BRACKET	1
16.	TP-#4x45L	TAPER PIN	2
17.	WS- \emptyset 10	SPRING WASHER	8
18.	SC-M10x45L	SOCKET CAP SCREW	8
19.	6304ZZ	BEARING	1
20.	30304	BEARING	1
21.	4M-XA09-01	BEARING CAP	1
22.	3M-Y009-00	BEARING SPACER	1
23.	SC-M8x25L	SOCKET CAP SCREW	4
24.	WS- \emptyset 8	SPRING WASHER	4
25.	3M-YA09-00	BEARING SPACER	1
26.	3M-Z005-01	BEARING BRACKET	1
27.	TP-#4x38L	TAPER PIN	2
28.	WS- \emptyset 6	SPRING WASHER	11
29.	V5-ZB04-00	CLAMPING PLATE	2
30.	B8-Y035-00	M20 NUT	2
31.	2M-Z029-00	Z AXIS BALANCING BASE	1
32.	SS-M6x8L	SOCKET SET SCREW	4
33.	3M-Z056-00	SPACER	4
34.	SR-42	SNAP RING (FOR HOLD)	4
35.	6004ZZ	BEARING	4
36.	SC-50	CHAIN	2
37.	3M-Z037-00	BALANCING PULLEY	4
38.	3M-Z039-00	BEARING SPACER	4
39.	2M-Z083-00	BALANCING BASE	1
40.	WF- \emptyset 6	FLAT WASHER	2
41.	SC-M6x16L	SOCKET CAP SCREW	2
42.	SS-M6x12L	SOCKET SET SCREW	4
43.	2M-Z038-00	BALANCING PULLEY SHAFT	2
44.	M3-Z008-00	BALANCING SCREW	2
45.	HB-M12	HOOK BOLT	1
46.	2M-A005-00	BALANCING BLOCK	1
47.	SC-M6x12L	SOCKET CAP SCREW	6
48.	2M-Z080-00	BALANCING BASE	2
49.	M4-X016-00	DOG	3
50.	WF- \emptyset 5	FLAT WASHER	6
51.	SC-M5x20L	SOCKET CAP SCREW	6
52.	KY-6x6x25L	KEY	1
53.	2M-A001-00	COLUMN	1
54.	4M-Z096-00	SCREW	2
55.	4M-Z097-00	COMPRESS SPRING	2
56.	4M-Z095-00	BALANCING BASE	1
57.	\emptyset 4	IRON WIRE	2

10.11 FULL ENCLOSURE COOLANT SYSTEM ASSEMBLY

10.11.1 FULL ENCLOSURE COOLANT SYSTEM ASSEMBLY DRAWING

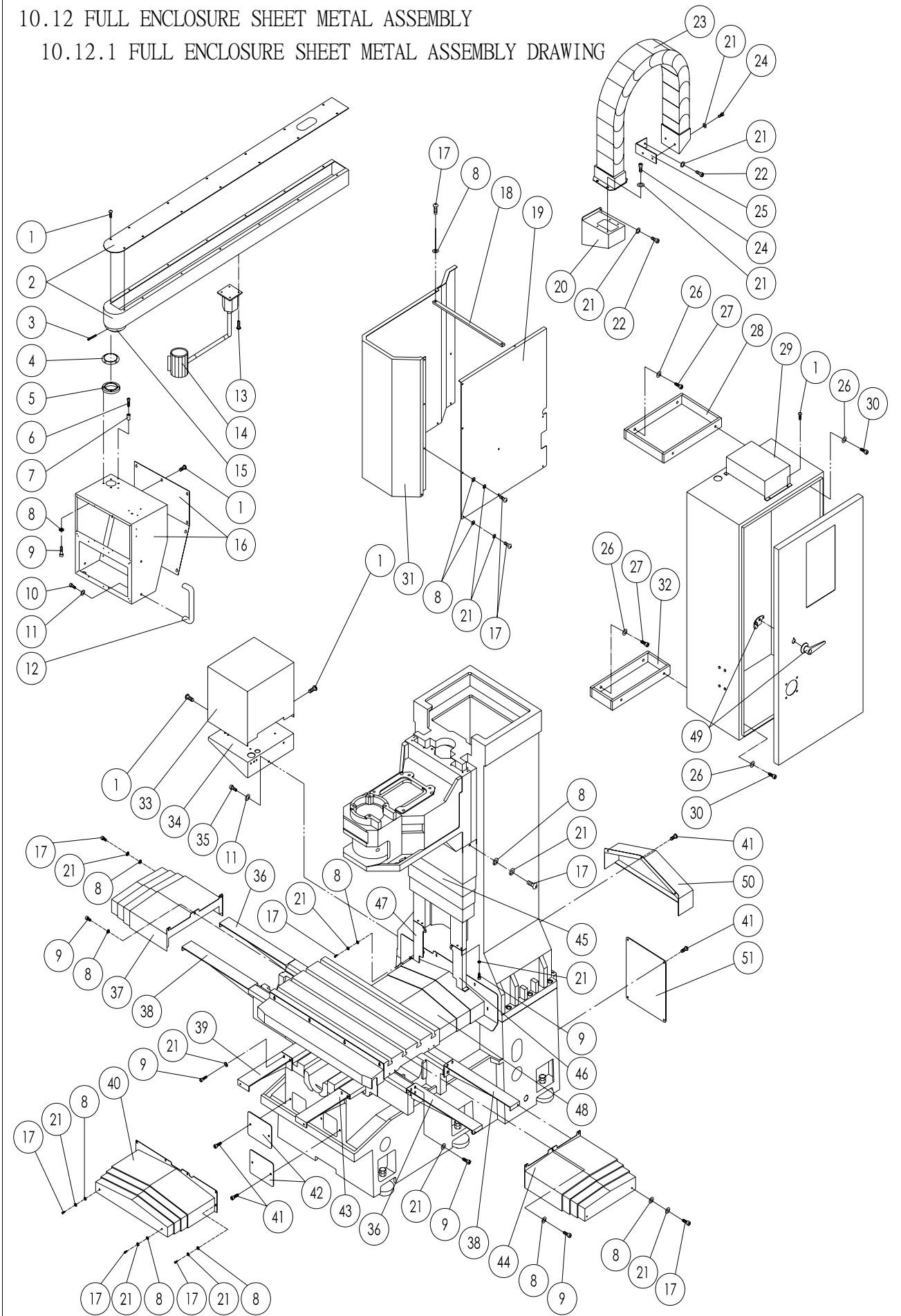


10.11.2 FULL ENCLOSURE COOLANT SYSTEM ASSEMBLY PART LIST

NO.	PART NO.	DESCRIPTION	QTY
1.	LT-Ø4	LUBRICATION OIL TUBING	17
2.	OD-A9P	OIL DISTRUBTE	1
3.	SC-M6x25L	SOCKET CAP SCREW	6
4.	Ø8x5m	STAINLESS STEEL CONVEYING HOSES	1
5.	JPC8-02	LABORSAVING CONNECTION	1
6.	A6-Z045-00	COOLANT TUBSE BRACKET	1
7.	PT1/4" x17	AIR TUBE	1
8.	PH1/2" x1700L	STAINLESS STEEL CONVEYING HOSES	1
9.	PH1/2" xPT3/8"	WATER CONNECTION	1
10.	SC-M6x30L	SOCKET CAP SCREW	2
11.	3/8"	BALL VALVE	1
12.	10½"	COOLANT TUBE	1
13.	Ø4x1300L	LUBRICATING STRING	1
14.	OD-A8P	OIL DISTRUBTE	2
15.	Ø4x1400L	WATER OIL TUBING	1
16.	CSED	ELECTRONIC LUBRICATION	1
17.	Ø4x3000L	LUBRICATING STRING	1
18.	PH1/2" x PT 3/4" x PH1/2"	TRIPLE HEADED CONNECTION	1
19.	SC-M16x70L	SOCKET CAP SCREW	10
20.	WS-Ø16	SPRING WASHER	10
21.	HN-M6	NUT	2
22.	DF-6004-00	TAPER PIN	2
23.	MTA3-180	COOLANT PUMP	1
24.	SC-M8x25L	SOCKET CAP SCREW	2
25.	WS-Ø8	SPRING WASHER	2
26.	SC-M8x20L	SOCKET CAP SCREW	2
27.	WF-Ø8	FLAT WASHER	2
28.	2M-A010-00	PUMP BASE	1
29.	PH1/2"	HEX.NUT	1
30.	Ø1/2"	ADAPTER	1
31.	Ø3/4"	BIND TUBE	1
32.	Ø1/2"	WATER PIPE	1

10.12 FULL ENCLOSURE SHEET METAL ASSEMBLY

10.12.1 FULL ENCLOSURE SHEET METAL ASSEMBLY DRAWING

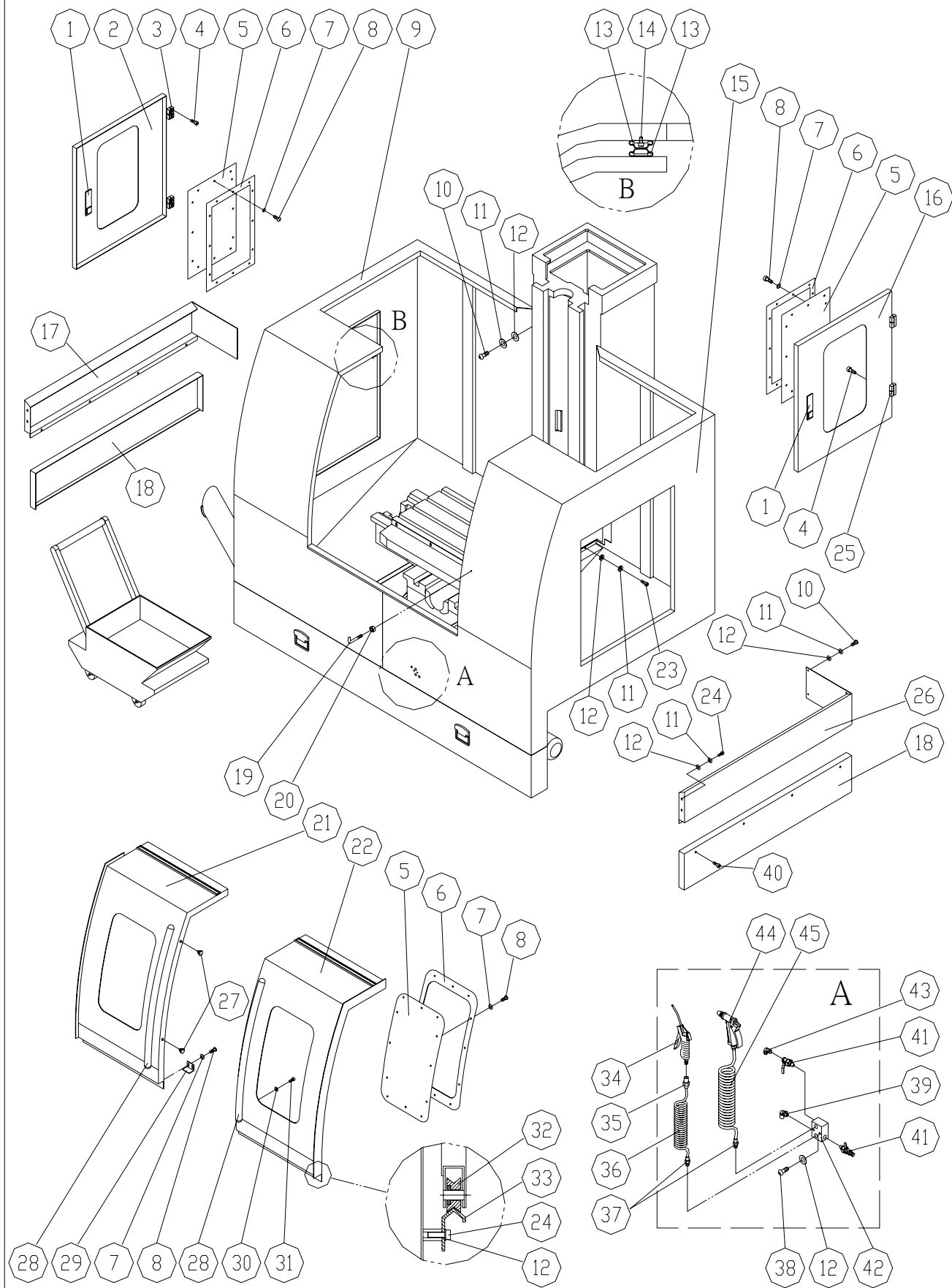


10.12.2 FULL ENCLOSURE SHEET METAL ASSEMBLY PART LIST

NO.	PART NO.	DESCRIPTION	QTY
1.	SB-M5x10L	HEX SOCKET BUTTON HEAD SCREW	30
2.	2M-C144-01	PENDANT ARM	1
3.	Ø6x24L	SPRING PIN	1
4.	6308	WASHER	1
5.	B6-C157-00	CONSOLE' S LINK	1
6.	SC-M6x20L	SOCKET CAP SCREW	2
7.	V5-C151-00	CONSOLE' S ANGLE FIXED LINK	2
8.	WF-Ø6	FLAT WASHER	53
9.	SC-M6x16L	SOCKET CAP SCREW	30
10.	SC-M8x8L	SOCKET CAP SCREW	2
11.	WF-Ø8	FLAT WASHER	4
12.	B6-C149-00	CONSOLE' S HANDLE	1
13.	M4x16L	SCREW	4
14.	JW-55½ RNTM(110V/24V)	WORK LAMP	1
15.	B6-C156-00	CONSOLE' S LINK	1
16.	V5-C146-02	OPERATE CONSOLE	1
17.	SB-M6x12L	HEX SOCKET BUTTON HEAD SCREW	43
18.	V6-A032-00	HEAD COVER SUPPORTER	1
19.	2M-A031-01	RIGHT HEAD COVER FLANK	1
20.	V5-Z063-01	BRACKET SUPPORTER BASE	1
21.	WS-Ø6	SPRING WASHER	74
22.	SC-M6x12L	SOCKET CAP SCREW	4
23.	RC2xKR100x15 目×NO.6	FLEXIBLE CARRIER	1
24.	SC-M6x8L	SOCKET CAP SCREW	6
25.	V5-Z055-01	POWER CHAIN BRACKET	1
26.	WF-Ø10	FLAT WASHER	8
27.	SC-M10x30L	SOCKET CAP SCREW	4
28.	V6-C152-00	CABINET BRACKET	1
29.	B6-C148-G5	ELECTRIC BOX	1
30.	SC-M10x16L	SOCKET CAP SCREW	4
31.	2M-A030-01	HEAD COVER	1
32.	2M-C153-00	CABINET BRACKET	1
33.	4M-C170-01	CONVERTER BOX	1
34.	4M-C171-01	CONVERTE SUPPORTER	1
35.	SC-M8x20L	SOCKET CAP SCREW	2
36.	2M-XA14-L0	X AXISTELESOPING WAY COVER SUPPORTER (LEFT)	2
37.	2M-XA13-L0	X AXIS TELESOPING WAY COVER (LEFT)	1
38.	2M-XA14-R0	X AXIS TELESOPING WAY COVER SUPPORTER (RIGHT)	2
39.	2M-Y046-L0	Y AXIS TELESOPING WAY COVER SUPPORTER (LEFT)	1
40.	2M-Y045-00	Y AXIS TELESOPING WAY COVER (FRONT)	1
41.	SB-M6x10L	HEX SOCKET BUTTON HEAD SCREW	11
42.	2M-A011-01	WATER FILTER NET	2
43.	2M-Y046-R0	Y AXIS TELESOPING WAY COVER SUPPORTER (RIGHT)	1
44.	2M-XA13-R0	X AXIS TELESOPING WAY COVER (RIGHT)	1
45.	3M-Z060-00	Z AXIS TELESOPING WAY COVER	1
46.	2M-Z061-R0	Z AXIS TELESOPING WAY COVER SUPPORTER (RIGHT)	1
47.	2M-Z061-L0	Z AXIS TELESOPING WAY COVER SUPPORTER (LEFT)	1
48.	2M-Y047-00	Y AXIS TELESOPING WAY COVER (REAR)	1
49.	A-45-A	ELECTRIC BOX HANDLE (PLATE)	1
50.	2M-A013-00	REAR COVER	1
51.	2M-A008-00	BASE REAR COVER	1

10.13 FULL ENCLOSURE ASSEMBLY

10.13.1 FULL ENCLOSURE ASSEMBLY DRAWING

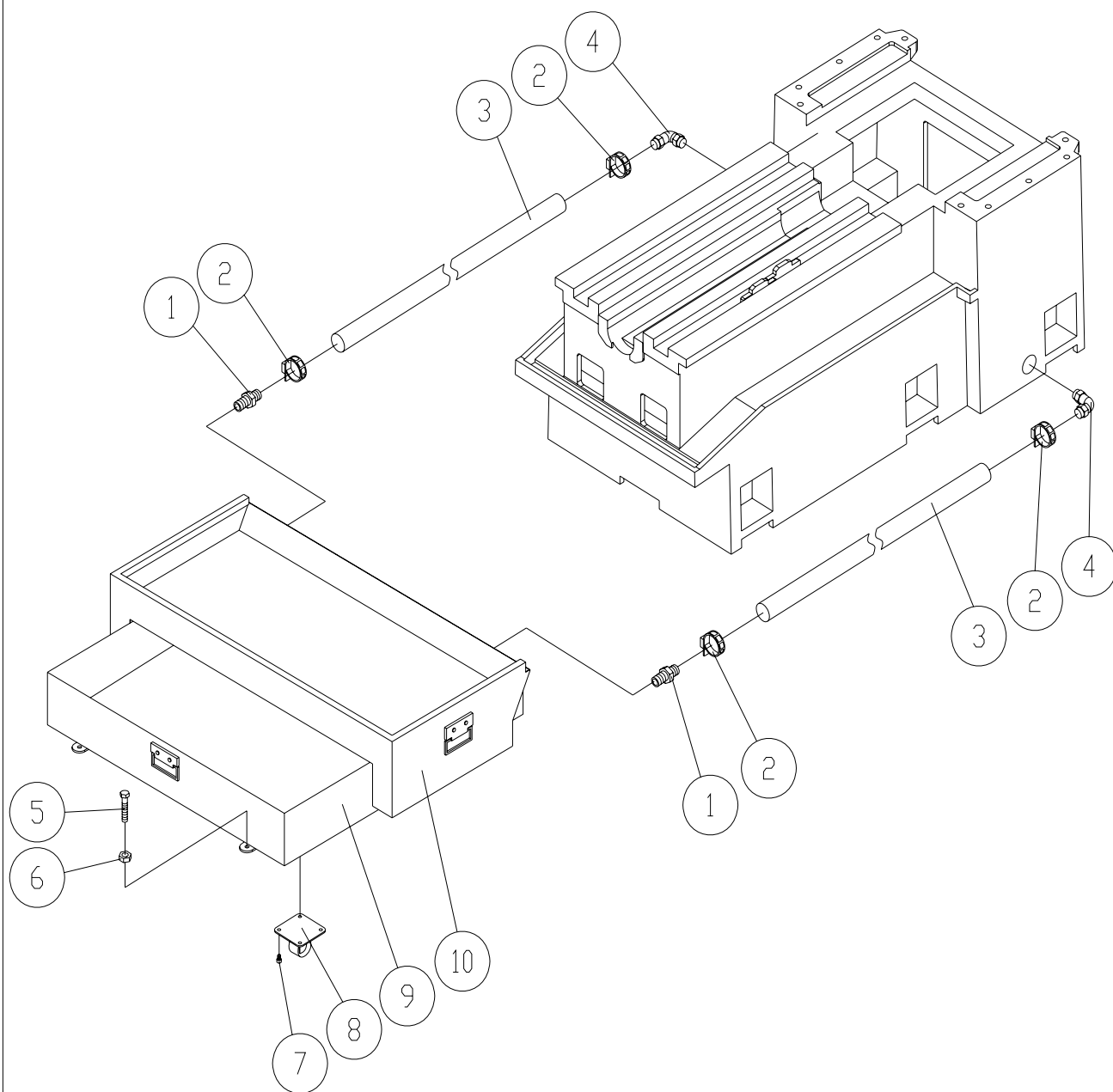


10.13.2 FULL ENCLOSURE ASSEMBLY PART LIST

NO.	PART NO.	DESCRIPTION	QTY
1.	4M-A431-00	HANDLE	2
2.	4M-A403-L0	LEFT DOOR	1
3.	4M-A432-L0	DOOR HINGE (LEFT)	2
4.	SC-M5x8L	SOCKET CAP SCREW	16
5.	V5-A052-00	ACRYLIC SHEET	4
6.	4M-A411-00	LATTIC FOR ACRYLIC SHEET	4
7.	WF-Ø5	FLAT WASHER	64
8.	SB-M5x10L	HEX SOCKET BUTTON HEAD SCREW	64
9.	2M-A401-L0	LEFT GUARD	1
10.	SB-M6x12L	HEX SOCKET BUTTON HEAD SCREW	16
11.	WS-Ø6	SPRING WASHER	28
12.	WF-Ø6	FLAT WASHER	40
13.	4M-A433-00	18" RAILWAY	2
14.	SC-M4x8L	SOCKET CAP SCREW	6
15.	2M-A401-R0	RIGHT GUARD	1
16.	4M-A403-R0	RIGHT DOOR	1
17.	2M-A461-L0	DEPRESSOR	1
18.	2M-A462-00	DEPRESSOR	2
19.	A6-A050-00	AIR RIFLE PENDANT ARM	2
20.	HN-M6	NUT	2
21.	3M-A402-L0	LEFT DOOR	1
22.	3M-A402-R0	RIGHT DOOR	1
23.	SC-M6x16L	SOCKET CAP SCREW	8
24.	SC-M6x12L	SOCKET CAP SCREW	14
25.	4M-A432-R0	DOOR HINGE (RIGHT)	2
26.	2M-A462-R0	DEPRESSOR	1
27.	4M-A442-00	3mm .P.P BLOCK	2
28.	4M-A438-00	DOOR HANDLE	2
29.	4M-A439-00	STOP PLATE	4
30.	WF-Ø8	FLAT WASHER	4
31.	SC-M8x8L	SOCKET CAP SCREW	4
32.	4M-A440-00	PULLEY BASE	4
33.	4M-A441-00	DOOR RAILWAY	2
34.	KS-L-BU	AIR GUN	1
35.	SH-30	FAST CONNECTION	1
36.	O850-6m	ELASTIC PIPE	1
37.	A015	BRASS ADAPTER	2
38.	SB-M6x10L	HEX SOCKET BUTTON HEAD SCREW	2
39.	PT1/4"	LABORSAVING CONNECTION	1
40.	SC-M5x10L	SOCKET CAP SCREW	8
41.	PT1/4"	BALL VALVE	2
42.	4M-A055-00	STAINLESS STEEL CONVEYING HOSES BRACKET	1
43.	1/2PHx1/4PT	90° ADAPTER	1
44.		WATER RIFLE	1
45.	Ø12	ELASTIC PIPE	1

10.14 CHIP TANK ASSEMBLY

10.14.1 CHIP TANK ASSEMBLY DRAWING

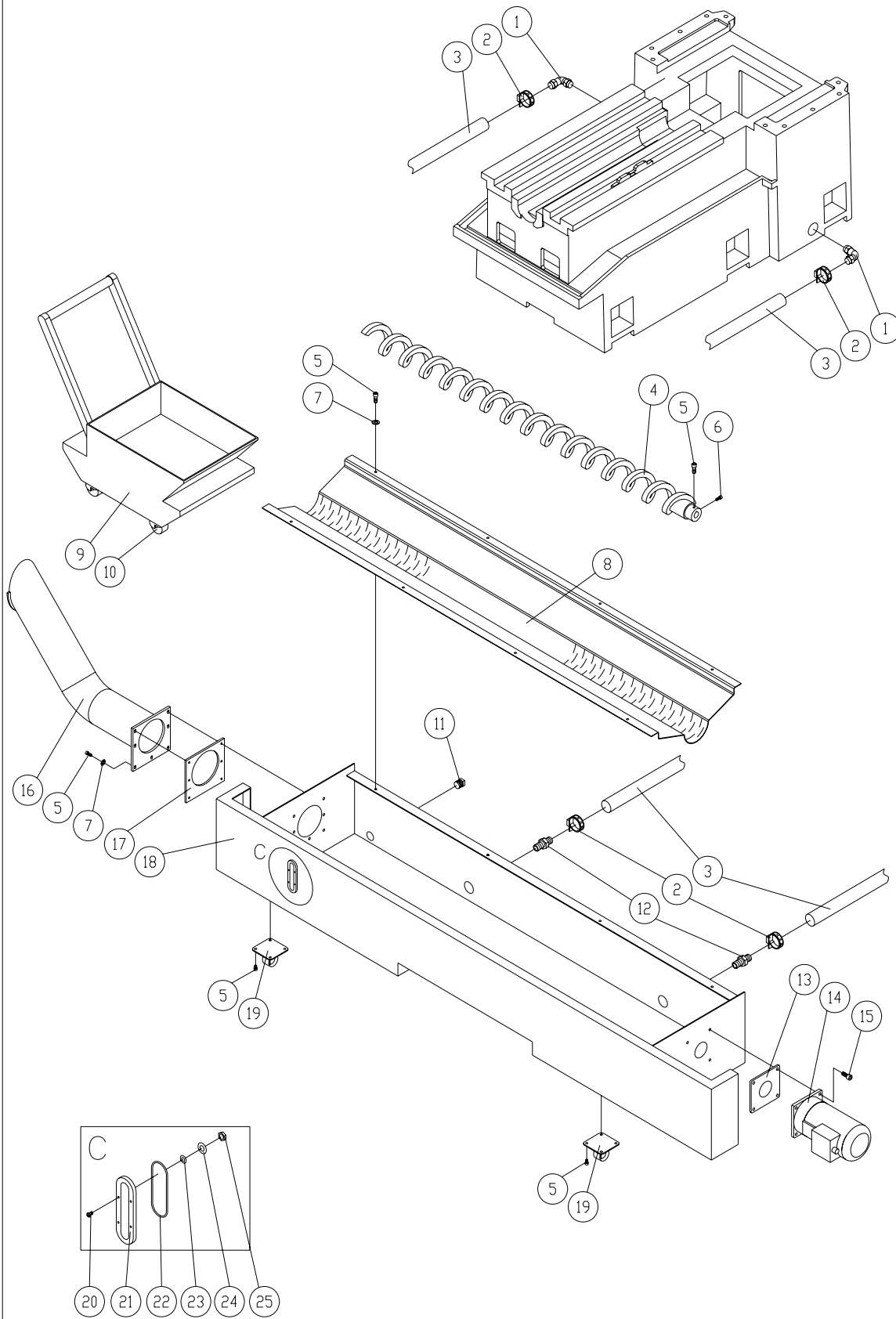


10.14.2 CHIP TANK ASSEMBLY PART LIST

NO.	PART NO.	DESCRIPTION	QTY
1.	PT1" × Ø1¼" 插心	WATER CONNECTION	2
2.	Ø1½"	BIND TUBE	4
3.	Ø1¼"	WATER PIPE	2
4.	PT1" × Ø1¼"	90° ADAPTER	2
5.	SH-M10×40L	HEX. HEAD SCREW	4
6.	HN-M10	NUT	4
7.	SC-M6×16L	SOCKET CAP SCREW	16
8.	4M-A443-00	3" CAST WHEEL (HIGH ×100)	4
9.	2M-B400-00	SUMP	1
10.	2M-B410-00	CENTRALIZE DREGS PLATE	1

10.15 CHIP CONVEYOR ASSEMBLY

10.15.1 CHIP CONVEYOR ASSEMBLY DRAWING

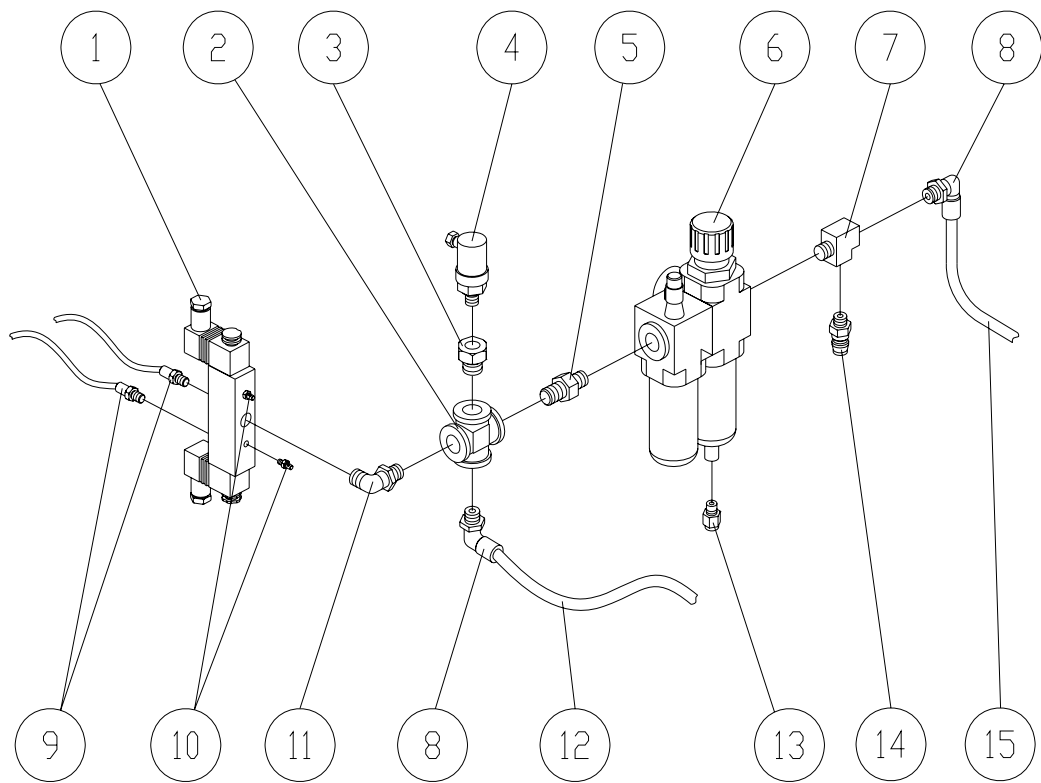


10.15.2 CHIP CONVEYOR ASSEMBLY PART LIST

NO.	PART NO.	DESCRIPTION	QTY
1.	PT1" × Ø1¼"	90° ADAPTER	2
2.	Ø1½"	BIND TUBE	4
3.	Ø1¼"	WATER PIPE	2
4.	2M-A446-00	SCREW TYPE CHIP CONVEYOR	1
5.	SC-M6×16L	SOCKET CAP SCREW	32
6.	SC-M6×20L	SOCKET CAP SCREW	1
7.	WF-Ø6	FLAT WASHER	15
8.	2M-B430-00	CHIP PLATE	1
9.	4M-B440-00	SCRAP IRON CAR	1
10.	4M-A451-00	3" PLASTIC WHEEL (HIGH ×100)	4
11.	PT1/2"	PLUG	1
12.	PT1" × Ø1¼"	WATER CONNECTION	2
13.	4M-A449-00	BRAKE MOTOR BASE	1
14.	1/4HP 90:1 Ø18	BRAKE MOTOR	1
15.	SC-M8×20L	SOCKET CAP SCREW	4
16.	2M-A448-00	CHIP CONVEYOR	1
17.	4M-A447-00	CHIP CONVEYOR PLATE	1
18.	2M-B420-00	SUMP	1
19.	4M-A443-00	3" CAST WHEEL (HIGH ×100)	4
20.	SB-M3×16L	HEX SOCKET BUTTON HEAD SCREW	4
21.	CLA	OIL LENS	1
22.	O-RING Ø55	O RING	1
23.	O-RING Ø3	O RING	4
24.	WF-Ø3	FLAT WASHER	4
25.	HN-M3	NUT	4

10.16 AIR FILTER REGULATOR FOR FULL ENCLOSURE W/- ATC & 6000RPM

10.16.1 AIR FILTER REGULATOR FOR FULL ENCLOSURE W/- ATC & 6000RPM DRAWING



10.16.2 AIR FILTER REGULATOR FOR FULL ENCLOSURE W/- ATC & 6000RPM PART LIST

NO.	PART NO.	DESCRIPTION	QTY
1.	PHS520D-8	SOLENOID VALVES (IT IS NOT NECESSARY WHEN MACHINE W/O ATC.)	1
2.	P101	BRASS ADAPTER	1
3.	P045	BRASS ADAPTER	1
4.	PMM10A14K	PRESSURE SWITCH	1
5.	PT3/8" xPT3/8" (P013)	BRASS ADAPTER	1
6.	AFR320-10-AD41	AIR FILTER REGULATOR W/- METER	1
7.	P104	BRASS ADAPTER	1
8.	3109.10.17	STUD FITTING	2
9.	3175.08.13	WATER CONNECTION (IT IS NOT NECESSARY WHEN MACHINE W/O ATC.)	2
10.	SL-01	SLIEVCERS (IT IS NOT NECESSARY WHEN MACHINE W/O ATC.)	2
11.	PT1/4" xPT1/4" (P075)	90° BRASS ADAPTER (IT IS NOT NECESSARY WHEN MACHINE W/O ATC.)	1
12.	Ø10x3.6m	PU CONVEYING HOSES	1
13.	JPC8-01	LABORSAVING CONNECTION	1
14.	PM-30(A)	BRASS ADAPTER	1
15.	Ø10x4.5m	PU CONVEYING HOSES	1