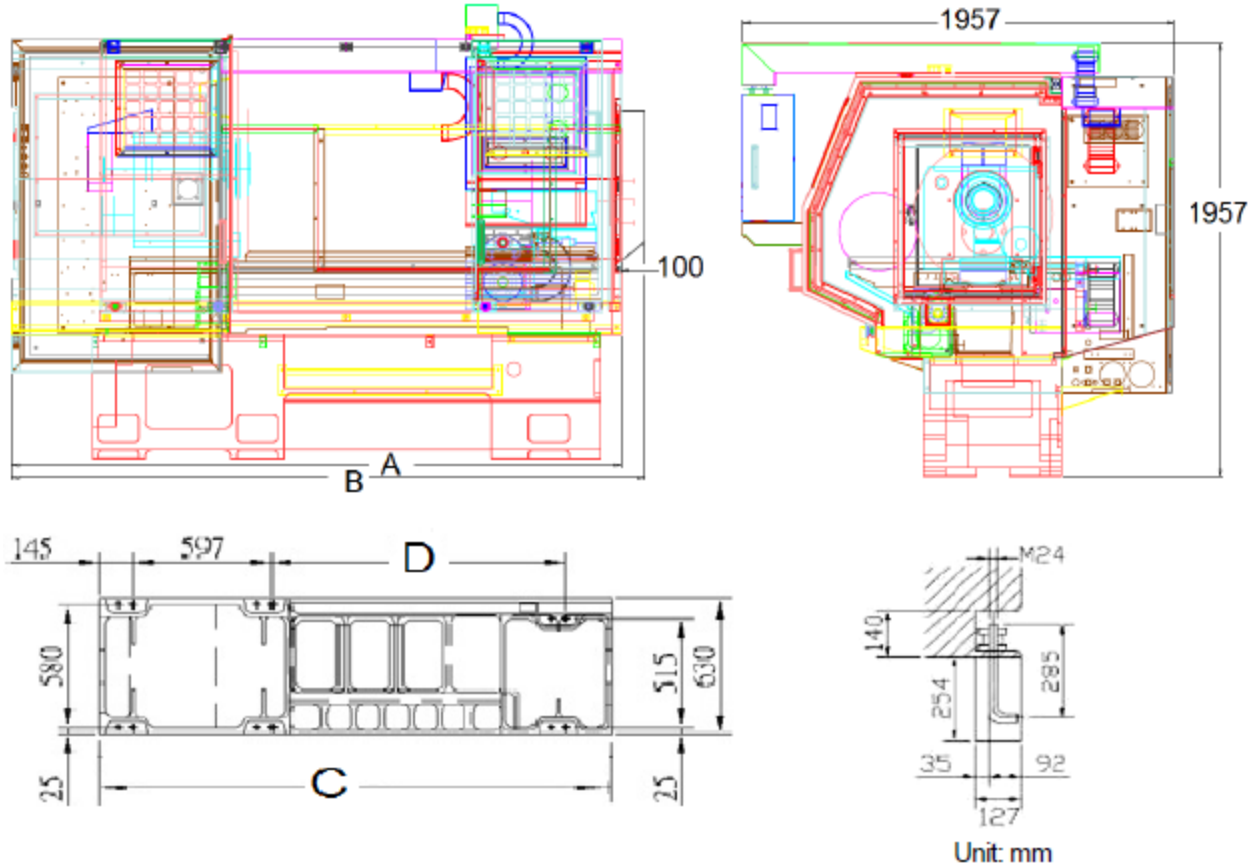


### 4.3 Foundation

(a) With special torque-resistant capability at the base, this machine requires no particular foundation. Only provide 15cm thick of concrete on the floor and leave space for components adjustment for leveling.

(Refer to figure 5) for foundation diagram.



Item Model	A	B	C	D	E	F
LC-1840	2250	2150				980
KL-1840 KL-2140 KL-2440	2625	2725	2190	1255	3950	1050
KL-1860 KL-2160 KL-2460	3125	3225	2690	1755	4425	1650
KL-2180 KL-2480	3625	3725	3190	2255	4825	2200

Note: Do not use wood foundation since its nature of unstable so that the machine may move gradually. Install the machine on the first or second floor. Take the stress of ceiling and foundation into careful consideration to see if machine load can be set safely.