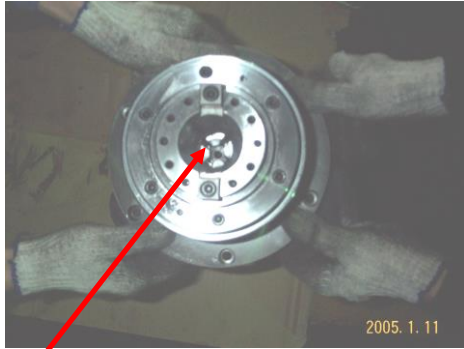


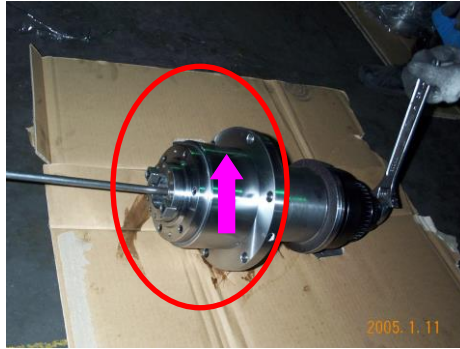
Replacement Disc Springs- Torque the spindle

※ It is not necessary to remove the spindle from the machine.

1. Use an M6 hexagon wrench to remove the Jaws, pay attention to the direction of removal, and hold the end of the spindle with a wrench.



Four Jaws

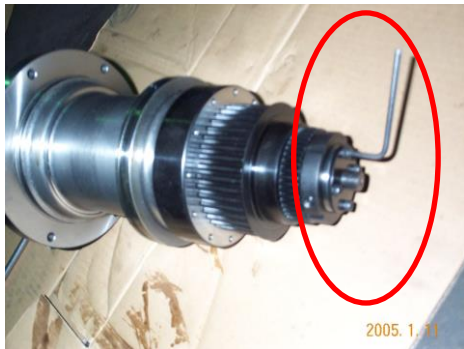


Use M6 hexagon wrench to remove the four-jaws in the direction of the arrow



Hold the end of the spindle with a wrench

2. Use an M4 hexagon wrench to remove 4 pieces of M5 screws; remove the screws and washer, and then pull out the pull rod.



3. a, Using a caliper to measure the distance between the lock nut and the end of the rod.

b. Use an M2.5 hexagon wrench to loosen the two M5 headless screws on the lock nut, and then remove the lock nut to replace the disc spring.



Measure the length



Loosen 2 M5 headless screws and remove the lock