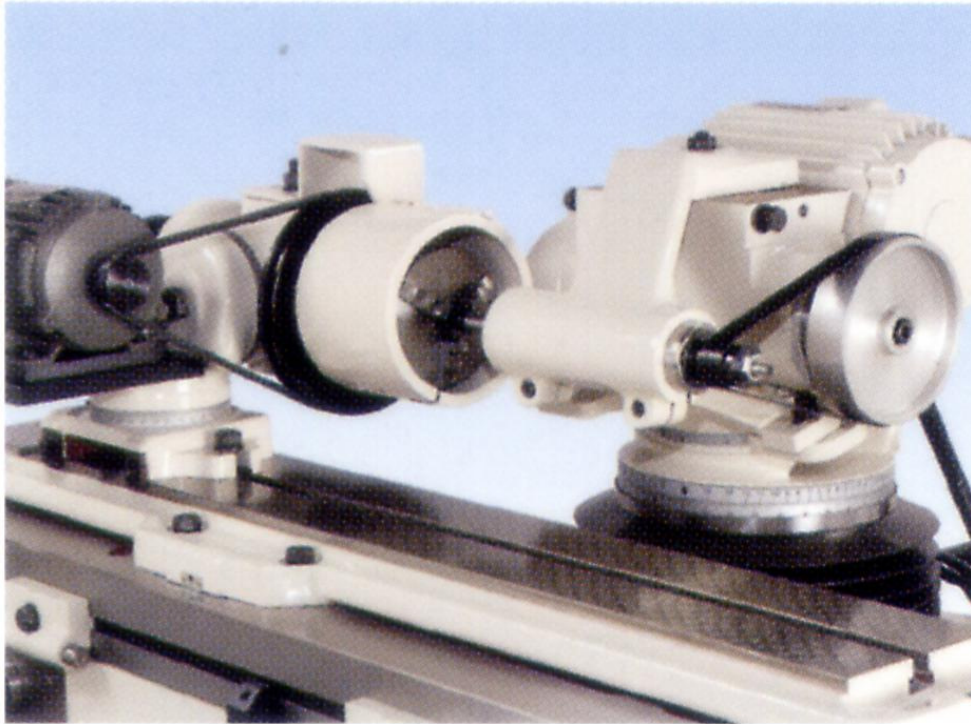


8.6 Bore Grinding Device



1. Introduction

This device must be used in conjunction with a cylindrical grinding device, wheel axle with 20000rpm, and can grind Taper.

2. Installation

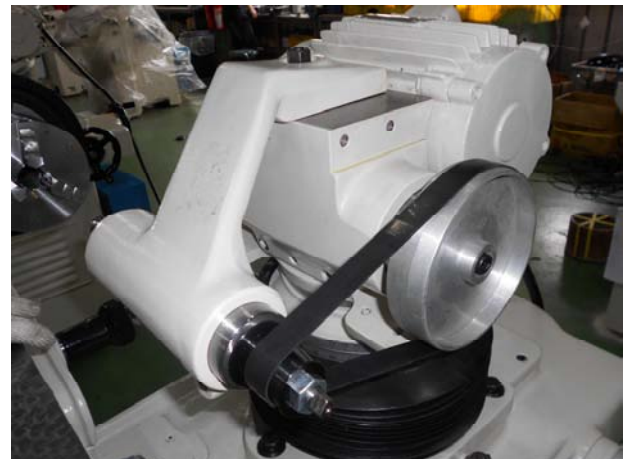
- (a) The first bolt into the T-slot, and then use the keypad to insert the outer groove. Put a flat washer, then six Angle locking nut.



(b) Put the pulley and tighten.



(c) The grinding spindle bore into the outer hole, and put on the pulley.



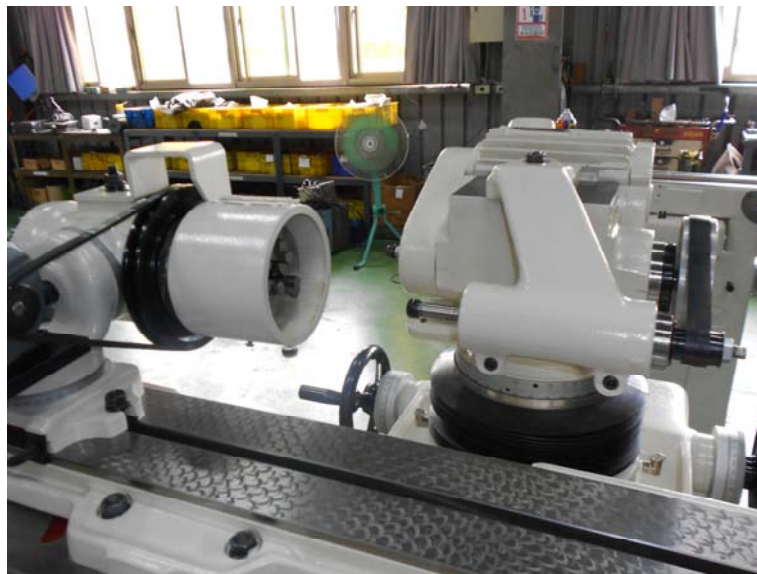
(d) Put a T-bolt, fitted bore grinding cover, and then put the hex nut locking washer.



(e) Put positioning fixed block and tighten.



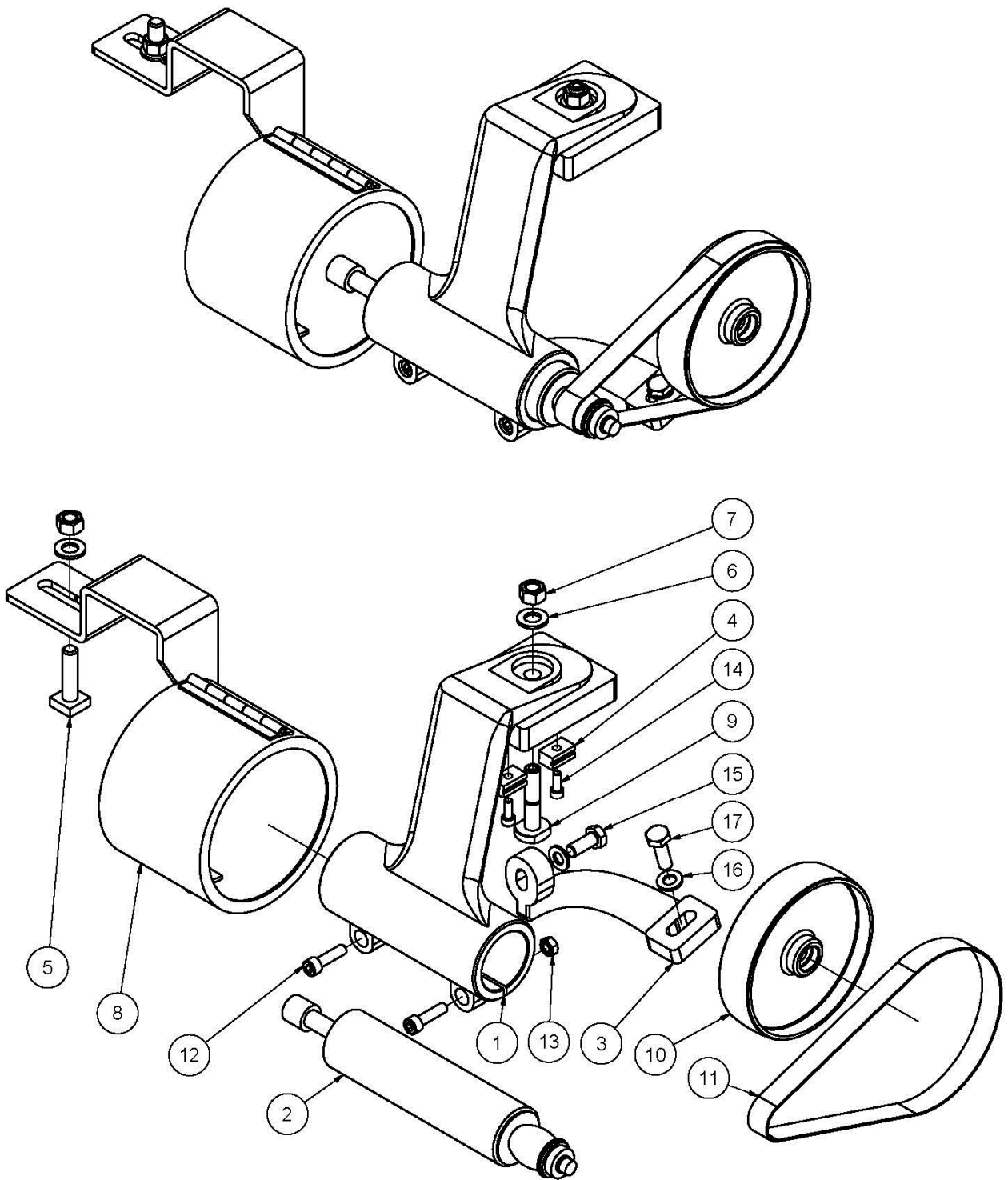
(f) Assembly is completed.



3. Method of operation

Work piece will be clamped jaw chuck, the use of T locking plate can be hand polished bore, if you adjust the dials below can grind taper bore.

Bore Grinding Device Drawing



Bore Grinding Device List

項目	品號	品名	規格	數量
1	M150010**	Outer		1
2	M150160**	Internal grinding spindle		1
3	M150140**	Positioning fixed block		1
4	M450030**	Key		2
5	M450080**	T-bolt		1
6	GE011644	Washer	12(Black)	2
7	GF030360	Hex nut	M12	2
8	M150170**	Internal grinding cover		1
9	M120260**	Bolt		1
10	M150130**	Pulley (10° 30')		1
11	GD030111	Leather belt	FL630W20	1
12	GF011495	Hex head screws Order	M8*30	2
13	GF030386	Hex nut	M8	2
14	GF012016	Hex head screws Order	M6*16	2
15	GF016050	Hex head screw	M10*25	1
16	GE011055	Washer	10(Black)	2
17	GF016759	Hex head screw	M10*30	1