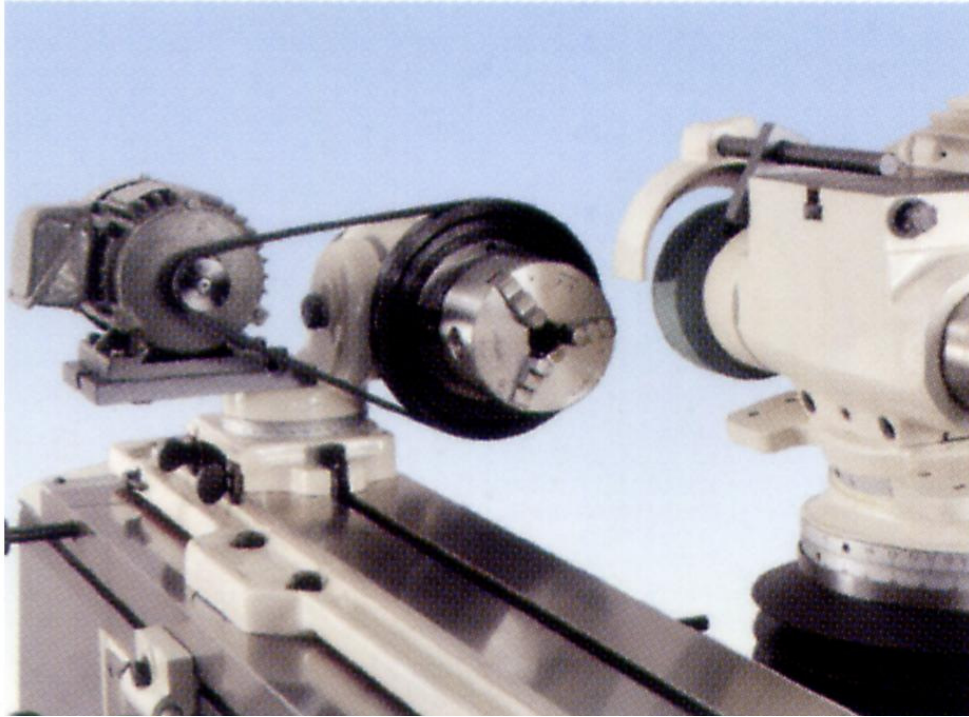


8.5 The Cylindrical Grinding Device



1. Introduction

This device is suitable for straight cylindrical and taper cylindrical grinding, grinding tools can. Grinding cylinder diameter range can be greater than 2 "(50mm), spindle speed: 310rpm, 360rpm, motor speed: 1/4HP-0.2Kw.

2. Product Specifications

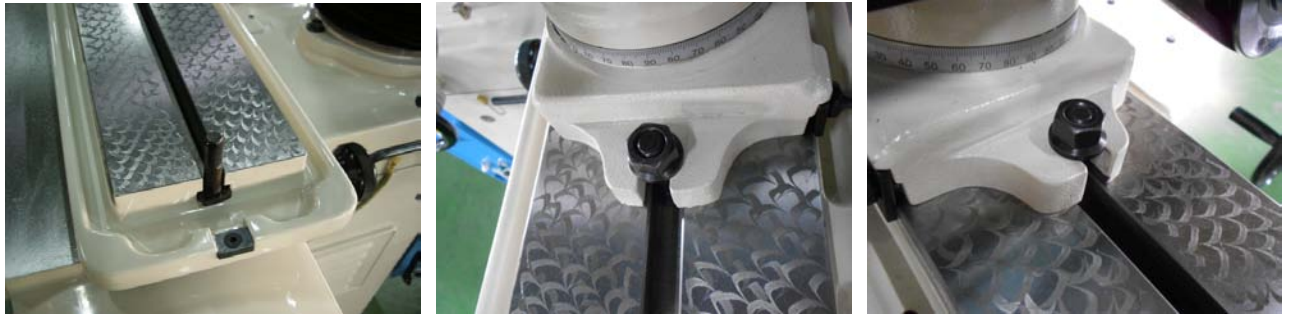
- (a) a cylindrical grinding diameter can be greater than 2 "(50mm)
- (b) Spindle speed: 310rpm, 360rpm
- (c) motor speed: 1/4HP-0.2Kw

3. Installation

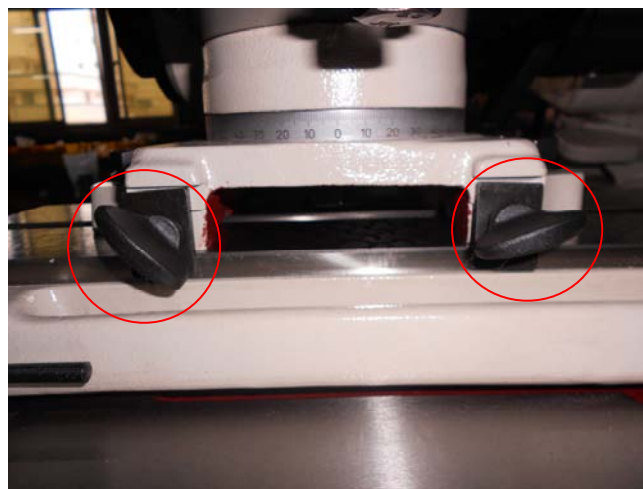
- (a) The working head units put to bed



(b) Then the T-screw into the M-40 work table T-slot and tighten.



(c) The butterfly-wing locking bolt.



(d) Put up after the motor head screws Hexagon order.



(e) The M-type set into the rear pulley fixed with a fixed block, and then tighten the hexagon socket button head screws.



(f) Put the belt.



(g) Fitted with 3-jaw chuck.



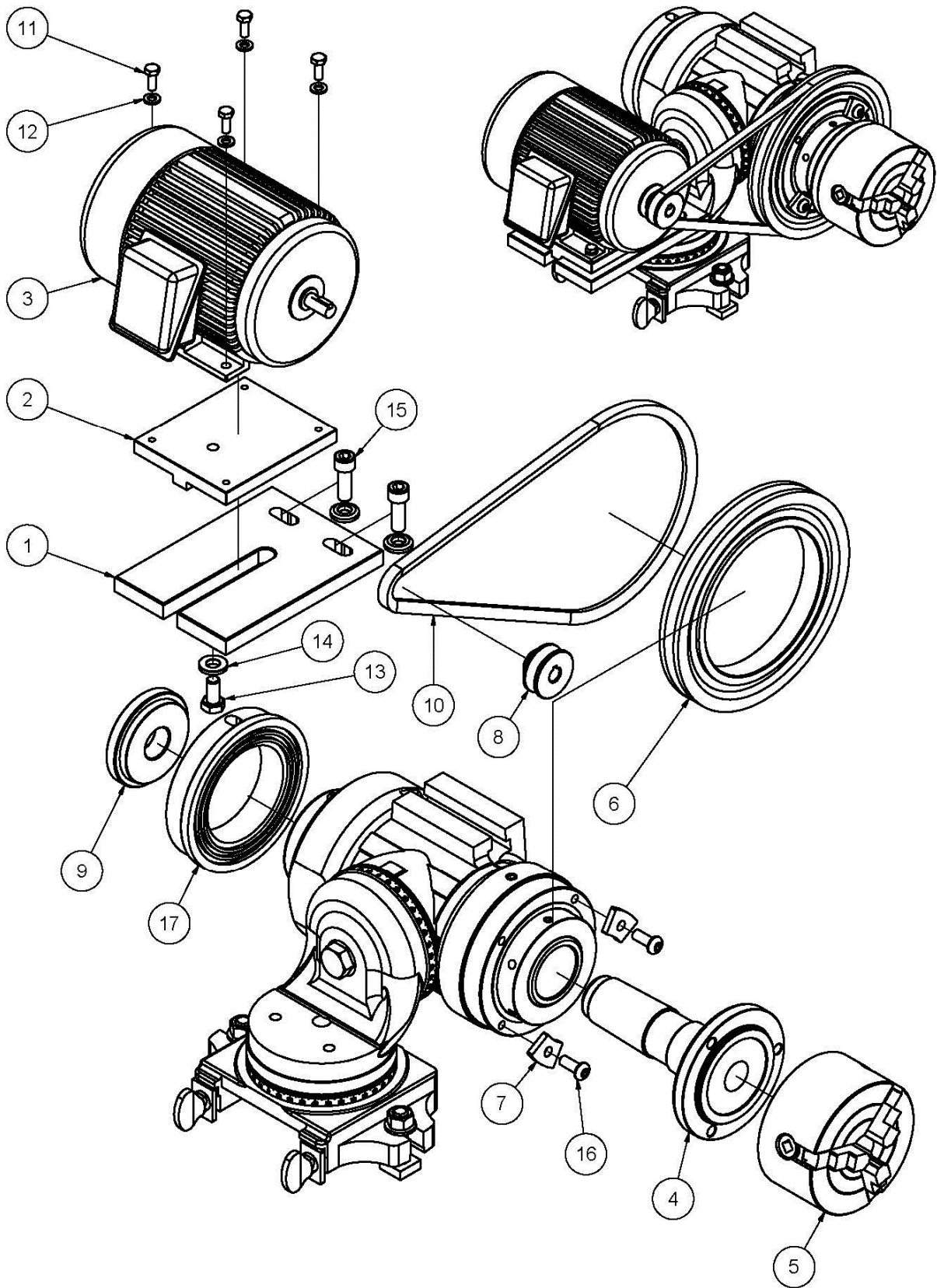
(h) Assembly is completed.



4. Method of operation

I'll Want to take advantage of the processing cylinder fixed jaw chuck can be processed straight cylinder, you can adjust the bottom of the dial can also be machined taper.

The Cylindrical Grinding Device Drawing



The Cylindrical Grinding Device List

項目	品號	品名	規格	數量
1	M140030**	Slide		1
2	M140040**	Skateboard		1
3	GG010065	Motor	220V/380V/50HZ/1/4HP/ Forward /IP44	1
4	M140080**	Chuck handle 4"		1
5	GQ010065	4" Common type three-jaw chuck	SC-04(After the Hole)	1
6	M140010**	M-type pulley		1
7	M170070**	Fixed block		2
8	M140020**	M-type pulley		1
9	M140070**	Tensioning screw gasket		1
10	GD030140	V-belt	M32	1
11	GF016665	Hex head screw	M6*16	4
12	GE011068	Washer	6.0(Black)	4
13	GF015824	Hex head screw	M10*20	1
14	M490102**	Washer	D22*d10.5*4.5L	3
15	GF011631	Hex head screws Order	M10*30	2
16	GF014915	Hex button head screws	M8*20	2
17	M450162**	Front inner dust cover		1