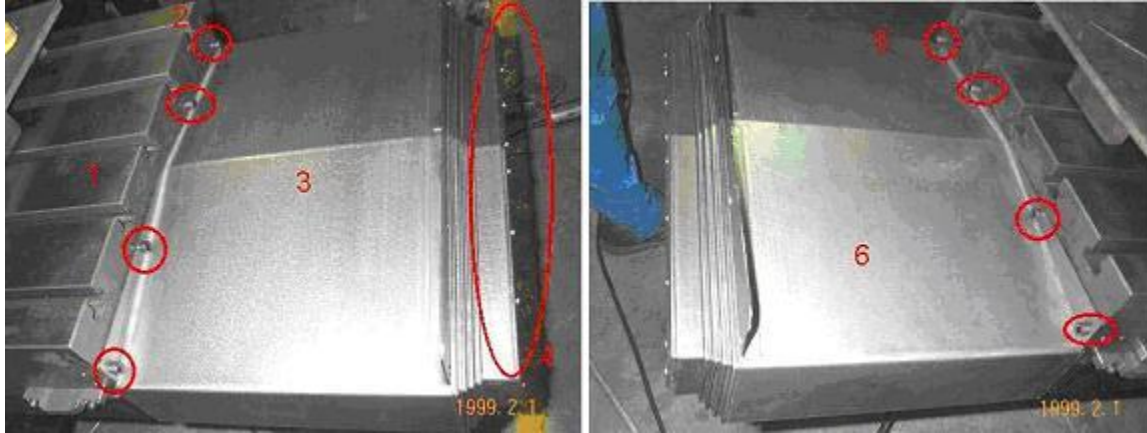


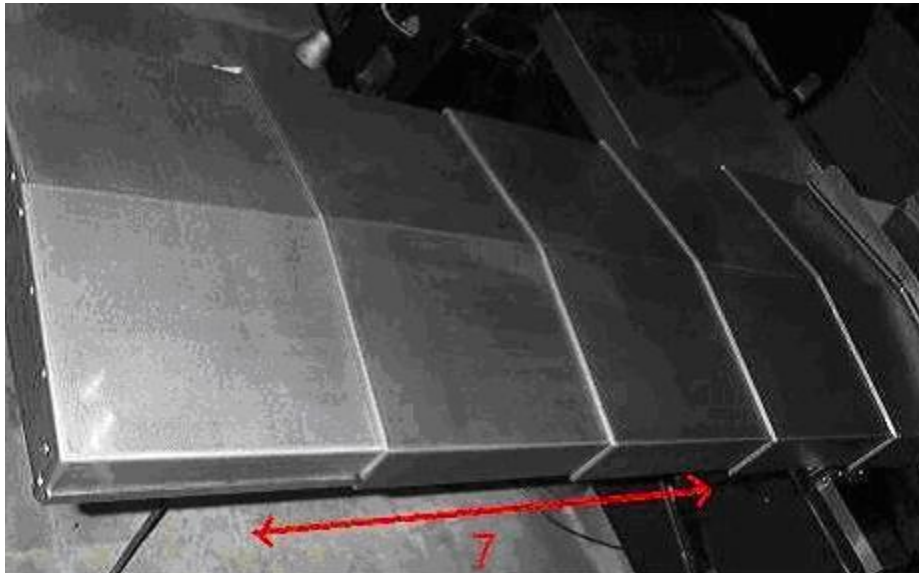
Install X/Y/Z telescoping way cover

X Axis:

1. After fitting X axis telescoping way cover, then fit cover on support and tighten by fixed screw whose between supporter and cover.
2. Then move the table to end of the cover side, then tighten by fixed screw whose between cover and table.
3. Right and left movement to make sure the cover moves smoothly.

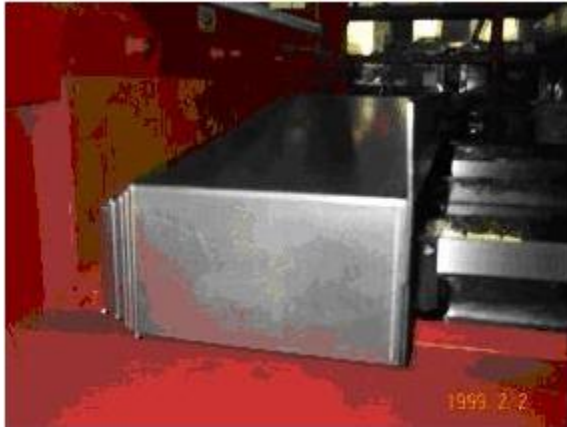


1. Move table to cover side
2. Fit fixed screw between cover & table
3. X axis telescoping way cover (right)
4. Fixed screw between cover and support
5. X axis telescoping way cover (left)
6. Fixed screw between cover & table
7. Move right then left



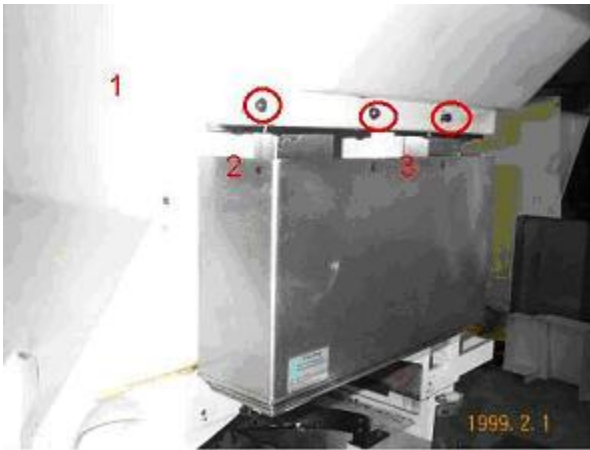
Y Axis:

1. Move saddle to cover side and tighten by fixed screw between saddle and cover
2. Front and rear movement to make sure the cover moves smoothly



Z axis:

1. Move Z axis down to cover side, then tighten both sides screw then front side screw
2. Up and down movement to make sure the cover moves smoothly.



1. Move Z axis down to cover
2. Both side screws (2X)
3. Front side screws (2X)