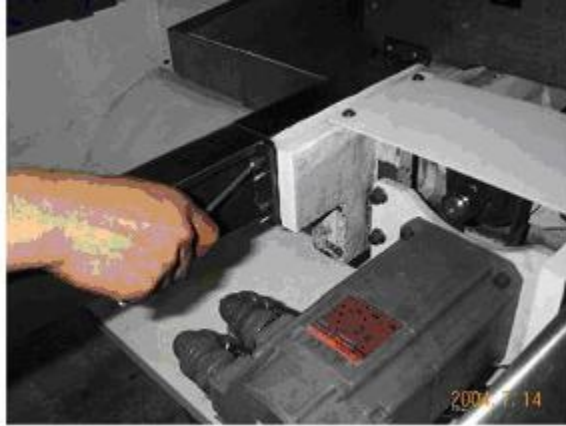


X axis telescoping way cover supported set up introduction

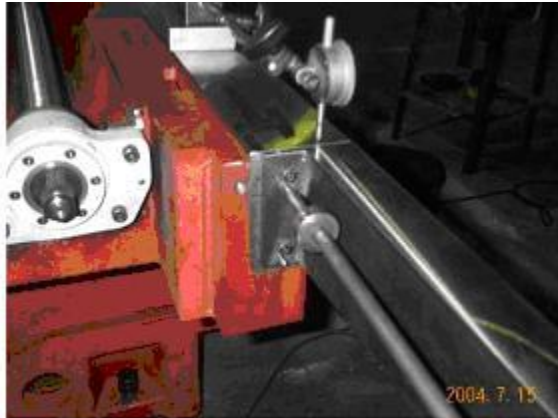
(1) Use two pins to fixed supporter after fitted



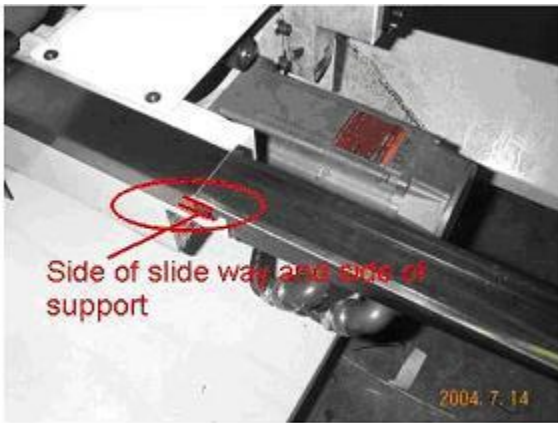
(2) Fixed by screw but do not tight



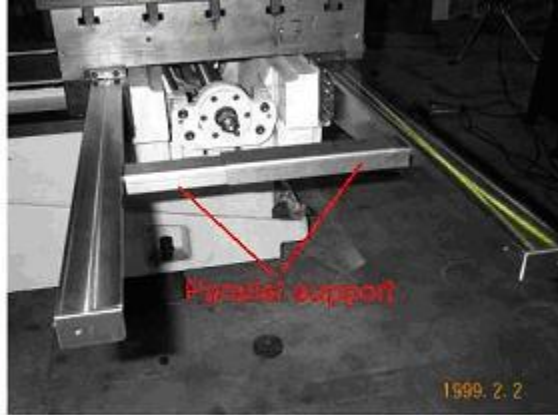
(3) Than use dial test indicator for checking after fitting support, support must be lower than the slide way surface 0.03~0.05mm; Checking the side face of support by dial test indicator, the base of dial lean on side of slide way to check, Side face of supporter must be lower than the slide way surface 0.01-0.15mm.



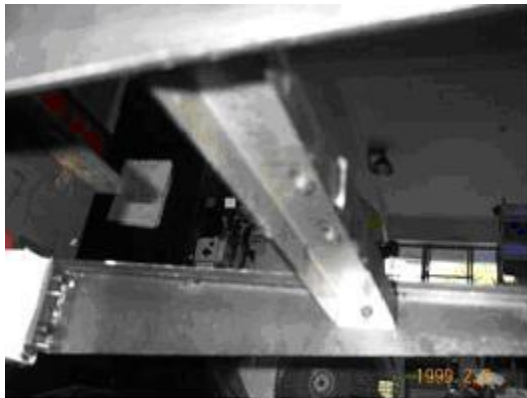
(4) Tighten the screw after finish checking.



(5) After fitting support than fit parallel supporter by three fixed screws.



(6) Fit by fixed screw.



(7) Fit the telescoping way cover after finish all support fitting.

