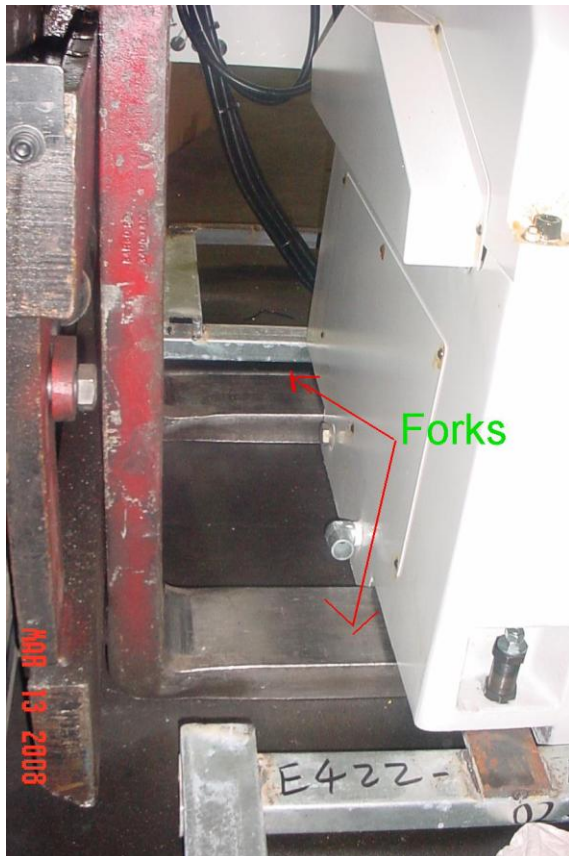
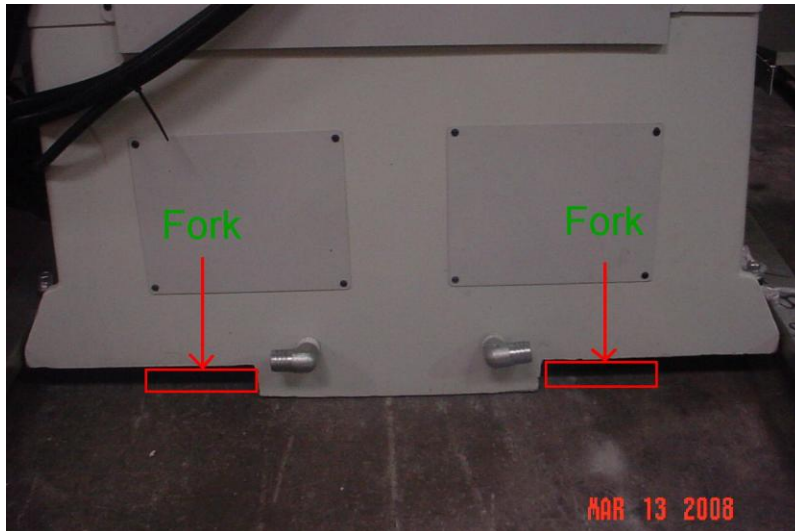


## M series - E422 - E526 machine

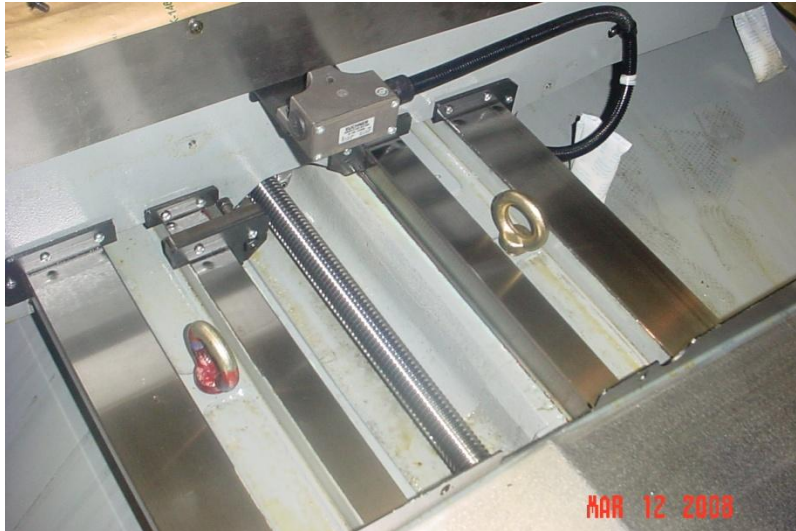
M series, E422 and E526 machine all of them no skid under machine

1. Use Forklift :



Use forklift to load or unload the machine

2. Use crane: Open the Y axis cover and move Y axis to the end of travel. Look picture



Use strap to hook up to 2 eye bolt



Reinforced cable go through that hole (picture) and another side