



CENTROID™

M400/T400 SL SlimLine CNC Operators Console



User Friendly CNC Control Interface

15" Color LCD
Touch Screen Display

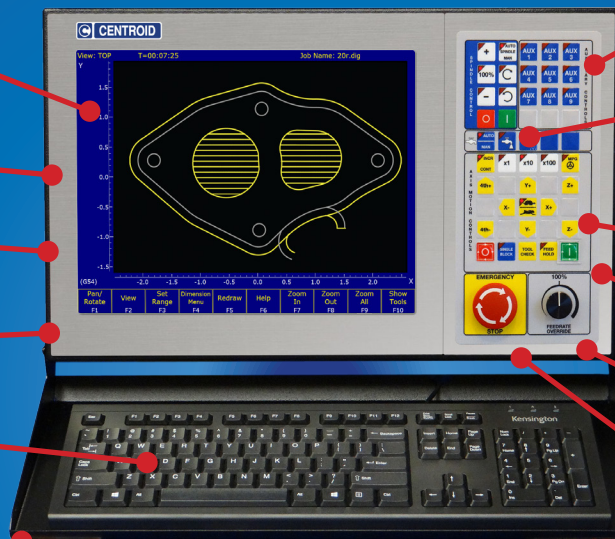
Ethernet Port and
Wifi*

Heavy Duty Steel
Construction

Durable
Powdercoat Finish

USB Keyboard
(easy replacement, use
most any off the shelf
USB keyboard)

Adjustable angle
Keyboard tray



User Configurable
Auxiliary Keys

Spindle Control
Coolant Control

4 USB Ports

MPG Connector

Dedicated Axis
Jog Buttons

Easy to Clean
Control Surfaces

Feedrate Override
Knob

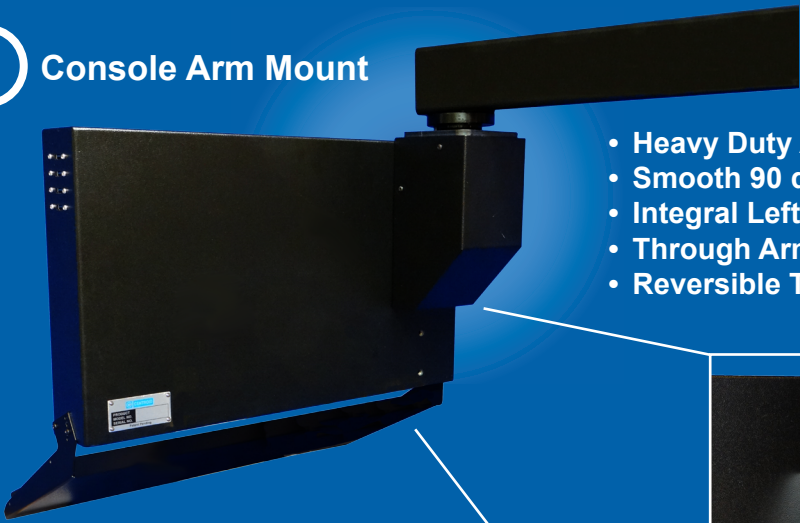
E-stop

Made in USA

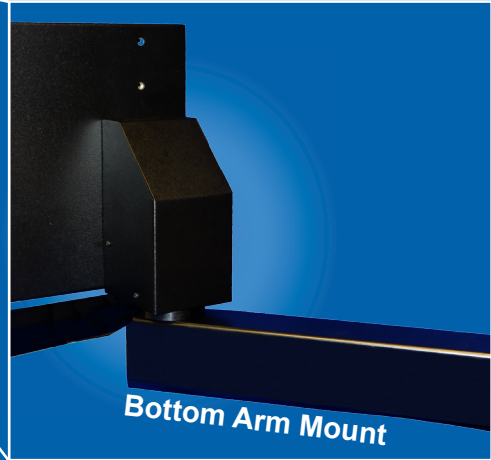
* when ordered with Internal CNCPC

Versatile CNC Console Mounting Configurations

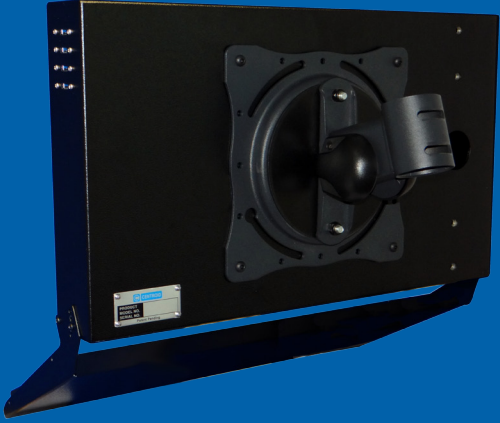
1 Console Arm Mount



- Heavy Duty Arm to Console Swivel Connection
- Smooth 90 degrees Console Swivel Rotation
- Integral Left Right Level Adjustment
- Through Arm/Swivel Control Cable Chase
- Reversible Top or Bottom Arm Mount using same components



2 Console Floor Stand Mount



- Heavy Duty Console to Support Pole Mount
- Adjustable Console Height and Angle Articulation
- VESA Standard 200mm x 200mm mount
- Heavy Duty Steel construction
- Locking Floor Casters
- Optional Utility and Mouse Tray



#13139	M400 / T400 SlimLine CNC Console	\$1595
#13181	M400 / T400 SlimLine CNC Console w/ Internal CNCPC	\$3049
#11084	Centroid CNCPC Cabinet Mount	\$1175
#11028	Conduit and Cable package* for console w/ CNCPC	\$405
#13150	Conduit and Cable package* for console w/o CNCPC**	\$465

Optional Console Accessories		
#13933	SlimLine Console Mounting Arm Kit (includes 13932)	\$463
#13932	Console to Arm mount hardware (adapt to existing arm)	\$139
#10512	Rolling Floor Stand	\$595
#8293	Utility Tray (mounts under keyboard, full width)	\$225
#8294	Mouse Tray (mounts left or right of keyboard tray)	\$95

*preassembled, standard length: 6 ft. of conduit combined with 16' of cable. **16' limit

* CNC Console Floor Stand shown with optional Utility and Mouse Tray



CENTROID
 159 Gates Road • Howard, PA 16841
 Sales: (814) 353-9256 • Fax: (814) 353-9265
www.centroidcnc.com