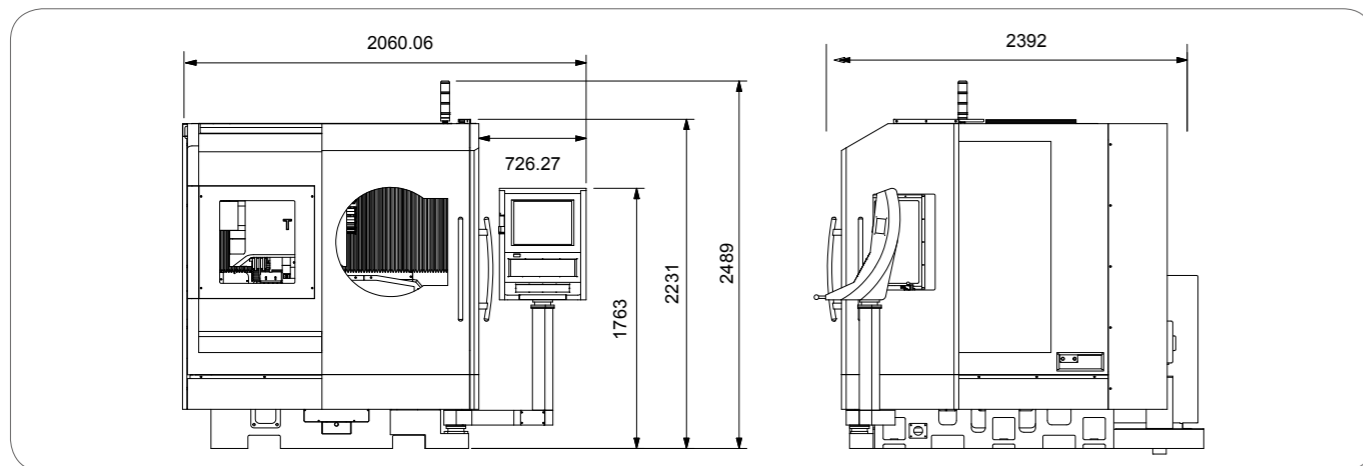


機械規格 / Machine Specifications

| | | | |
|---|-------------|-------------------------|-----------------------|
| 研磨範圍 General Capacity | 刀具最大長度 | Max. workpiece length | 300 mm |
| | 最大旋徑 | Max. workpiece diameter | φ 200 mm |
| 砂輪主軸 Grinding Spindle | 主軸轉速 | Spindle speed | 1000 rpm~9000 rpm |
| | 主軸馬達 | Spindle motor | 15kw / 20hp |
| | 工作主軸內錐 | Spindle taper | BT50 |
| 軸向行程 Axis travel | 最小分度解析度 | Resolution | 0.001° |
| | X軸行程 | X axis | 450 mm |
| | Y軸行程 | Y axis | 660 mm |
| | Z軸行程 | Z axis | 300 mm |
| | A軸行程 | A axis | ±360° |
| | C軸行程 | C axis | ±200° |
| | U軸行程 | U axis | 240 mm |
| 軸向伺服及冷卻馬達 Axis Motor and Coolant System | 快速位移(X、Y、Z) | Rapid traverse X,Y,Z | 10000 mm/min |
| | X軸伺服馬達 | X axis servo motor | 1 kw |
| | Y軸伺服馬達 | Y axis servo motor | 1 kw |
| | Z軸伺服馬達 | Z axis servo motor | 1.5 kw |
| | A軸伺服馬達 | A axis servo motor | 0.75 kw |
| | C軸伺服馬達 | C axis servo motor | 1 kw |
| | U軸伺服馬達 | U axis servo motor | 0.75 kw |
| | 冷卻過濾馬達 | Coolant | 2.25 kw |
| 控制器 Controller | 自動潤滑 | Lubrication | 25w |
| | 型式 | Model | SIEMENS+IPC |
| 機械規格 Dimension | 佔地面積 | Floor space | 3120 x 3145 x 2130 mm |
| | 機械重量 | Weight | 6000 kg |

本公司保有規格設計變更的權利，不再另行通知。
All specifications are subject to change without prior notice.

機械尺寸 / Dimension



鼎維工業股份有限公司
TOPWORK Industry Co.,Ltd.

台中市40755工業區6路9號
No.9, 6th Road, Taichung Industrial District, Taichung
40755, Taiwan.
TEL : 886-4-23581558 FAX : 886-4-23581268
E-mail : topwork@ms12.hinet.net
www.topwork.com.tw

TOPTW201302



鼎維工業
ISO 9001 · CE

6 Axis CNC Tool Grinder

6軸CNC 工具磨床

TW-5



床台結構剛性佳-低振動
高剛性線性滑軌-耐磨耗
全伺服機構控制-定位準
高精度滾珠螺桿-精度高

Strongly structured bed – minimum vibration
High rigidity linear guideway – Maximum wear resistance
Full servo controller – Positioning accuracy
High precision ballscrew – Highly accurate operations

TW-5 6軸CNC 工具磨床

雙主軸靈活運用砂輪調配

- 雙砂輪主軸可更加靈活運用砂輪調配。
- 具有3D探針自動量測與再研磨刀具系統。
- 搭載特殊U軸軸向及支撐座，並針對長型刀具生產。
- 大馬力功率之砂輪馬達，可確切提升工作效率。

Double Grinding wheel spindles

- The double Grinding wheel spindles could freely apply to more grinding wheel selections.
- Equipped with the 3D touch probe, that automatically measure and resharpen tool.
- The specially designated U axis and its support stand, provide no limitation while producing long type of tool.
- The high power motor of the grinding wheel increase work efficiency.

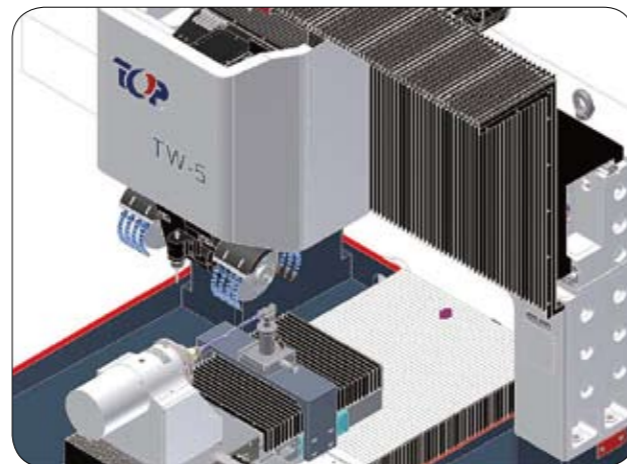


控制器

- 簡易的機台操作介面，可快速上手操作機台。
- 觸控螢幕支援手動輸入。
- 並可快速切換3D CAD /CAM及CNC畫面。

Controller

- User-friendly operational panel.
- Touch screen panel allows manual inputs
- Fast screen switch between 3D CAD and CNC



軟體介紹

Smart與Guts的特色

- 毫無受限制的刀具設計功能。
- 人性化且邏輯性的操控介面。
- 利用空間幾何數學建構出來的研磨路徑，刀具更精密。
- 可以依照自行需求改變刀具研磨的順序與方式。
- 再修磨、研磨最佳利器。

Advantages of SMART and GUTS

- Powerful tool design function with no limitation.
- Intellectual and logical interface.
- Spatial geometry based tool profile are more accurate than previous methods.
- Editable process sequence and method.
- Re-sharpening operation available.



標準配件/Standard Accessories

| | |
|--|--|
| 全密閉式護罩 | Full Enclosure splash Guard |
| 照明燈 | Halogen Lamp |
| 砂輪法蘭(2組4支) | Grinding Wheel Flange |
| 基礎墊塊和水平調整螺絲 | Leveling Bolts / Block |
| 固定式氣動夾持刀座 $\phi 6$ 、 $\phi 8$ 、 $\phi 10$ 、 $\phi 12$ 、 $\phi 16$ mm | Pneumatic Collet Holder $\phi 6$ 、 $\phi 8$ 、 $\phi 10$ 、 $\phi 12$ 、 $\phi 16$ mm |
| GUTS 刀具研磨軟體 | GUTS Grinding Software |
| 標準工具及工具箱 | Tool Box / Adjusting Tool |
| 油霧收集系統 | Oil mist collector |
| 油冷系統 | Oil coolant system |
| 冷凍機 | Cooler unit for Oil Coolant system |
| 角度測量盤 | Angular Setting Disc for Machine Reference Point Measurement |
| BT#50投影量測用治具 | Plug Gauge BT#50 for presetter Measurement |
| BT#50 測試棒 | BT#50 Plug Gauge Machine Reference Point Measurement |
| 壓力集塵筒 | Pressure Dust Container with 5 μ m |
| 中央控制自動給油裝置 | Automatic Lubrication System |
| 3D 模擬切削系統 | 3-Dimension Model Simulation System |
| 3D探針 | 3D Touch Probe |
| 支撐座(2選1，長刀或短刀用) | Support |
| 恆溫裝置(電器箱) | Thermostat |

特殊選件/Optional

| | |
|--------------------|--|
| 機械手裝置 | Robotic System |
| 砂輪及刀具影像量測裝置 | Grinding Wheel and CCD Tool Measurement system |
| 光學尺 | linear Scale |
| M-40 萬能工具磨床及圓筒研磨裝置 | M-40 Universal Cutter Tool Grinder with Cylindrical Grinder Attachment |
| 砂輪修整機 | TD Diamond wheel truing and dressing Machine |

