

# TRUMP

# Space Saver Plus

## VM-350

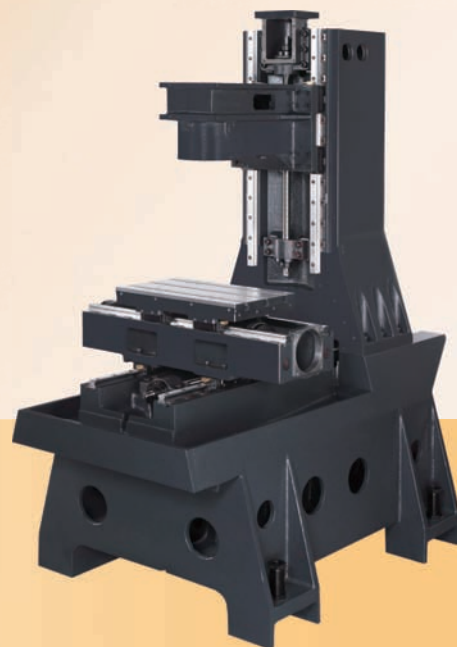
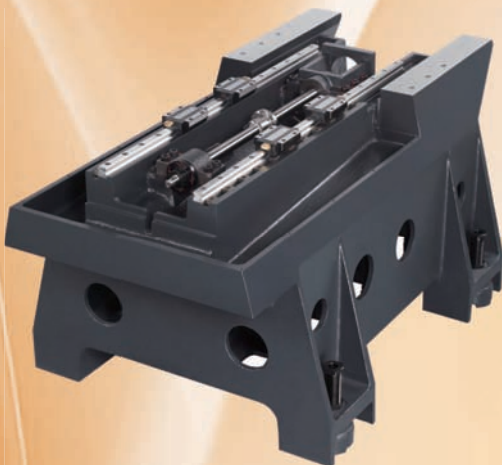
### VERTICAL

### MACHINING

### CENTER



- ✓ Table Size :  
15.7" x 9.8"
- ✓ XYZ Travel :  
13.7" x 9.8" x 11.8"
- ✓ Dimensions(LxWxH) :  
63" x 51" x 75"



# Specification

Model	VM-350 Space Saver Plus	
<b>TABLE</b>		
Table Size	15.7 x 9.8	in
Max Weight on Table	132	lbs
<b>TRAVELS</b>		
X / Y / Z AXIS	13.7 / 9.8 / 11.8	in
Spindle Nose to Table	2.8 ~ 14.6	in
<b>SPINDLE</b>		
Motor	3	HP
Speed	10,000 / opt. 30,000	rpm
Taper	BT-30	
<b>AXIS MOTORS</b>		
X / Y / Z Axis	0.75 / 0.75 / 1.0	kW
X / Y / Z Rapid Traverse	394"	ipm
<b>AUTOMATIC TOOL CHANGER</b>		
ATC Type	Armless	
Tool Shank	BT-30	
Tool Capacity	8	
<b>OTHER</b>		
Machine Weight (N.W)	2646	lbs
Machine Dimensions (LxWxH)	63 x 51 x 75	in
Air Pressure Required	90	psi
Coolant Pump	3/8	HP
Lubrication Pump	1/4	HP
Electric Power	10	KVA

## Standard Accessories

- CENTROID controller (USA made)
- Auto lubrication system
- Coolant System
- Full enclosure
- Operation and programming manual
- Tool box
- 8-Tool armless magazine (BT-30)
- Heat exchanger
- Leveling bolts and pads
- Working light

## Option Accessories

- Touch probe DP-4
- 4th axis rotary table
- 30,000 rpm spindle (ISO25)
- Automatic voltage regulator
- Spindle chiller
- Oil mist collector
- TT-1 tool touch off kit



ATRUMP MACHINERY INC.  
 670 UNION AVE  
 POMONA, CA 91768  
 TOLL FREE: 1-877-4-ATRUMP  
 TEL: (909) 623-6887  
 FAX: (909) 922-7569  
 atrump@atrump.com  
 http://www.atrump.com

